

The background of the slide is a dark red, textured surface. Several spherical, spiky cells are visible, resembling immune cells or pathogens. The cells have a granular, textured surface with small protrusions. They are scattered across the frame, with some in the foreground and others in the background. The overall appearance is that of a microscopic view of biological cells.

Procesele imunopatologice.

Иммунопатологические процессы.

Immunopathological processes.

Tema. Procesele imunopatologice.

Micropreparate:

№ 200. Hiperplazia foliculilor limfatici lienali în stimulare antigenică. (Colorație H-E.).

Indicații:

1. Folicul limfatic:
 - a. centrul germinativ mărit în dimensiuni;
 - b. porțiunea periferică a foliculului.

№ 173. Involuția accidentală a timusului. (Colorație H-E.).

Indicații:

1. Reducerea numărului de limfocite în corticala lobulului timic.
2. Limfocitele stratului medular al lobulului.
3. Corpusculi Hassall cu leziuni distrofice și necrotice:
 - a. depozite de calciu;
 - b. focare eozinofile omogene;
 - c. cavități chistice.

№ 201. Hipoplazia foliculilor limfatici lienali în sindromul imunodeficiar primar combinat. (Colorație H-E.).

Indicații:

1. Hipoplazia foliculilor limfatici (reducerea numărului de limfocite).
2. Pulpa roșie cu hemosideroză.

Тема: Иммунопатологические процессы.

Микропрепараты:

№ 200. Гиперплазия лимфоидных фолликулов селезёнки при антигенной стимуляции. (Окраска Г-Э.).

Обозначения:

1. Лимфоидный фолликул:
 - а. увеличенный, расширенный центр размножения;
 - б. периферический отдел фолликула.

№ 173. Акцидентальная инволюция тимуса. (Окраска Г-Э.).

Обозначения:

1. Уменьшение количества лимфоцитов коркового вещества дольки тимуса.
2. Лимфоциты мозгового вещества дольки.
3. Тельца Гассалья с дистрофическими и некротическими изменениями:
 - а. отложения солей кальция;
 - б. гомогенные эозинофильные массы;
 - в. кистозные полости.

№ 201. Гипоплазия лимфоидных фолликулов селезенки при первичном комбинированном иммунодефицитном синдроме. (Окраска Г-Э.).

Обозначения:

1. Гипоплазия лимфоидного фолликула (*уменьшение количества лимфоцитов*).
2. Красная пульпа с гемосидерозом.

Immunopathological processes.

Microspecimens:

№ 200. Hyperplasia of lymphoid lienal follicles in antigenic stimulation. (*H-E. stain*).

Indications:

1. Lymphoid follicle:
 - a. germinal center enlarged in size;
 - b. the peripheral part of the follicle.

№ 173. Accidental thymus involution. (*H-E. stain*).

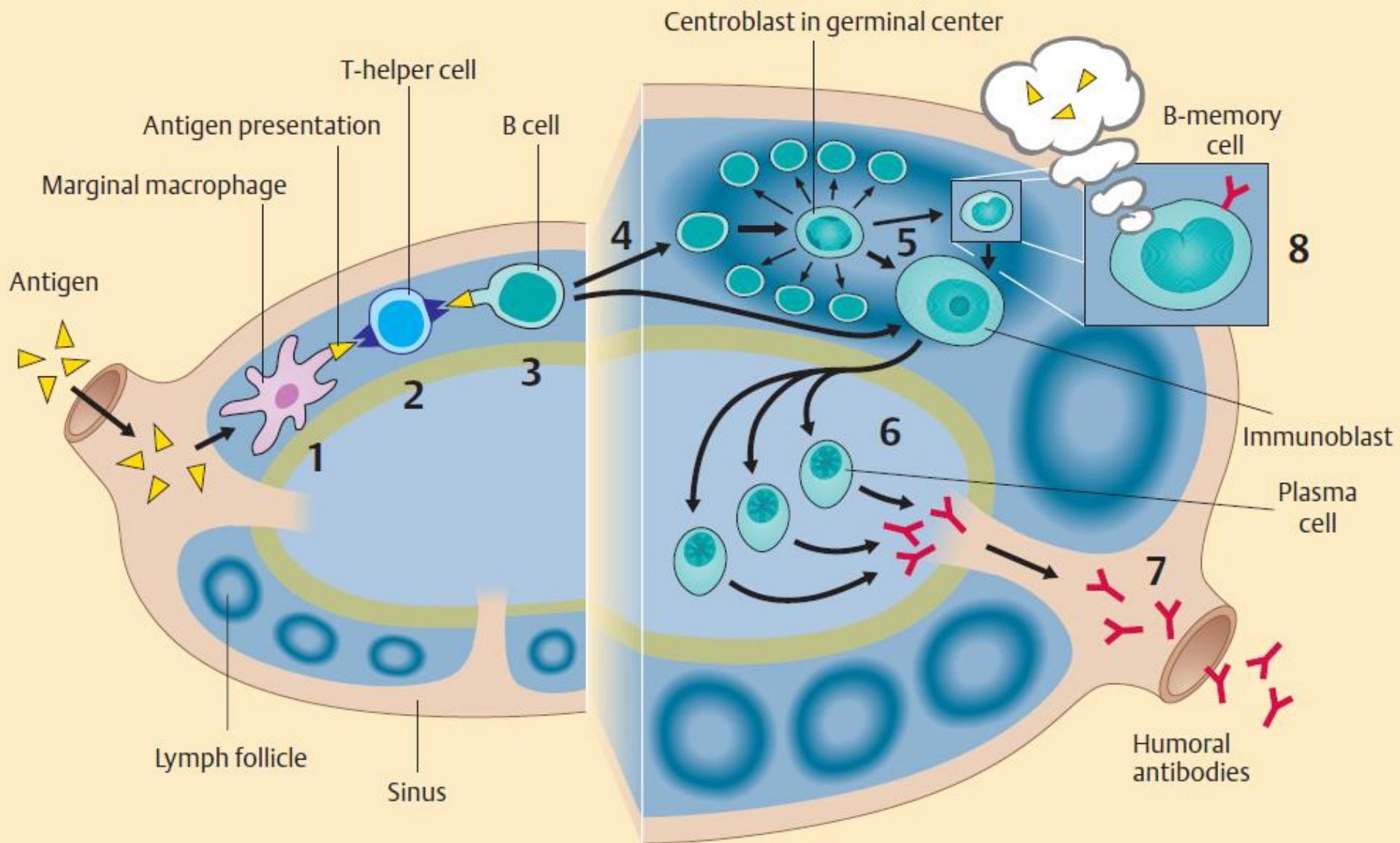
Indications:

1. Reducing the number of lymphocytes in the cortex of thymic lobule.
2. Lymphocytes of the medulla of the thymic lobule.
3. Hassall's corpuscles with dystrophic and necrotic lesions:
 - a. calcium deposits;
 - b. homogeneous eosinophilic foci;
 - c. cystic cavities.

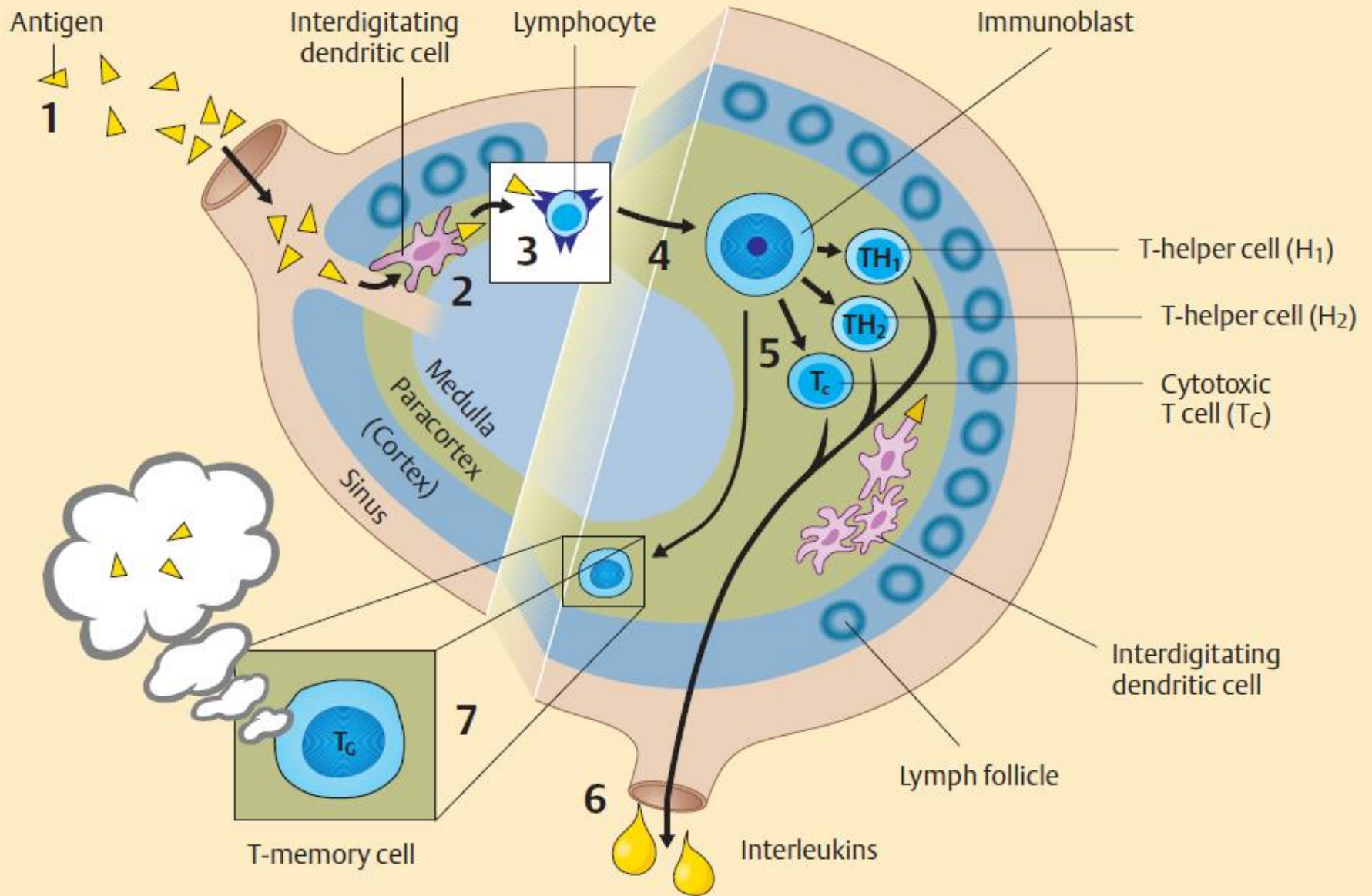
№ 201. Hypoplasia of lymphoid lienal follicles in primary combined immunodeficiency syndrome. (*H-E. stain*).

Indications:

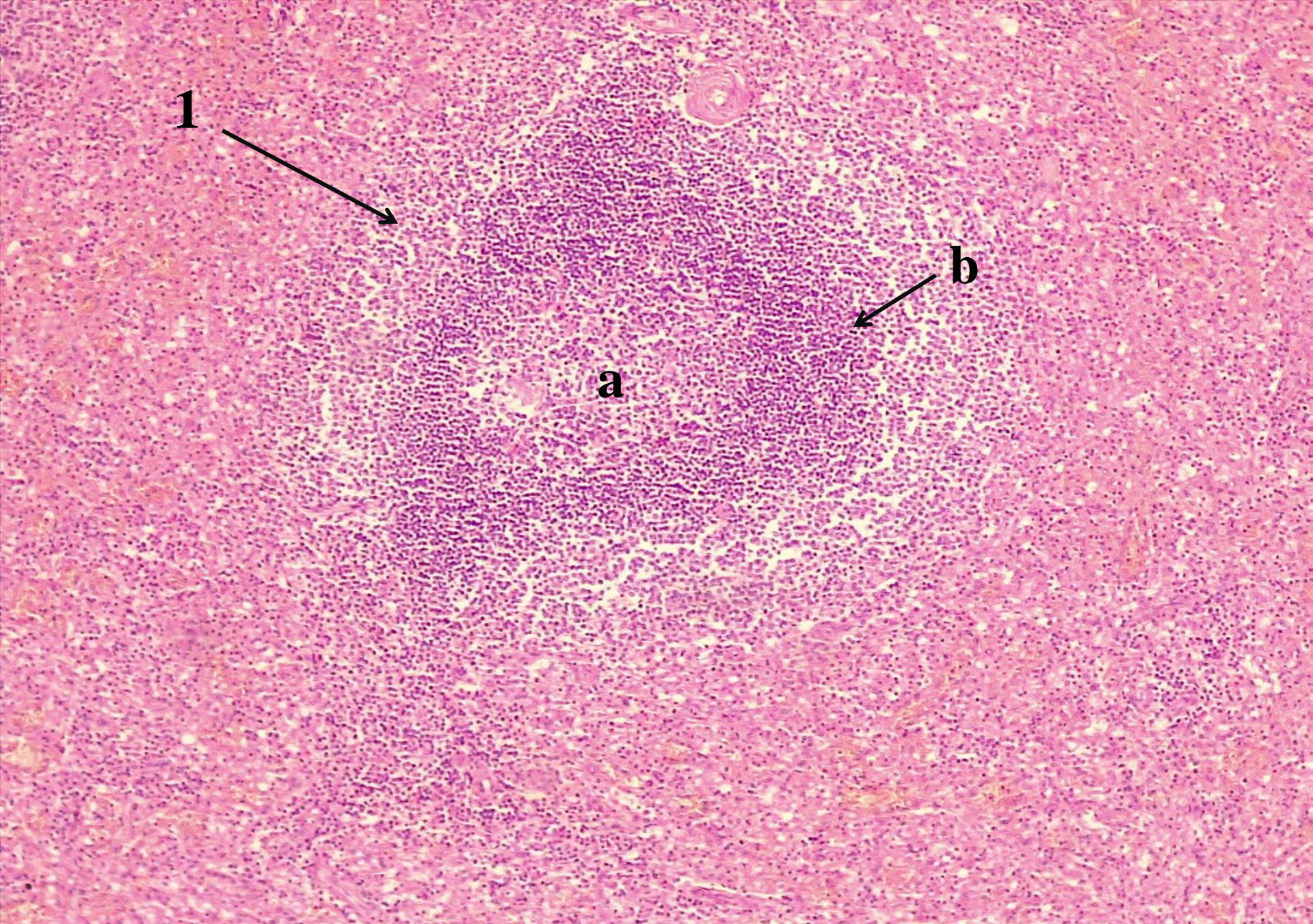
1. Hypoplasia of lymphoid follicles (reducing the number of lymphocytes).
2. Red pulp with hemosiderosis.



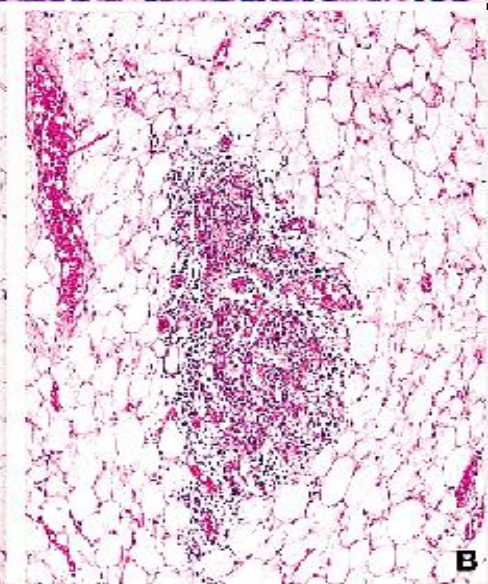
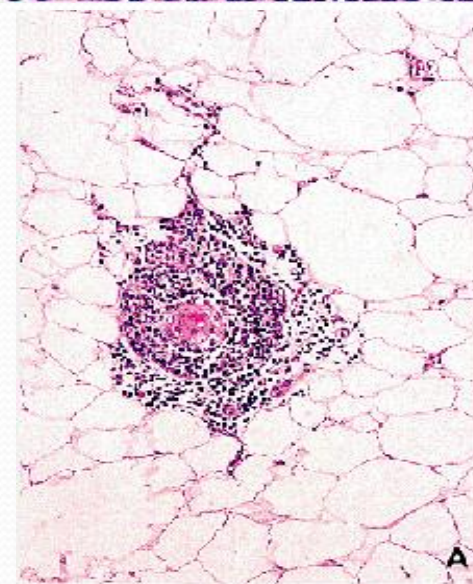
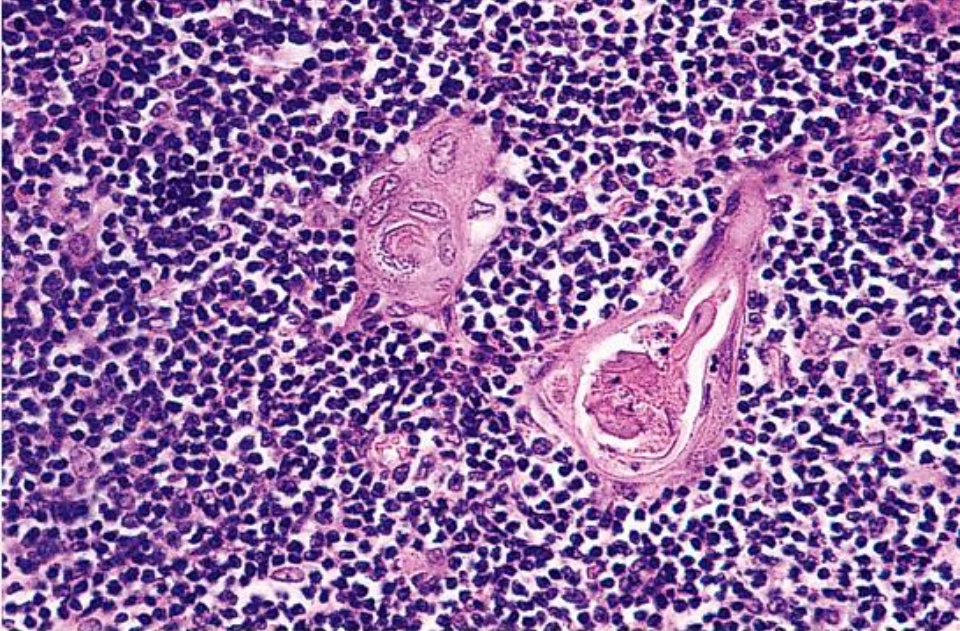
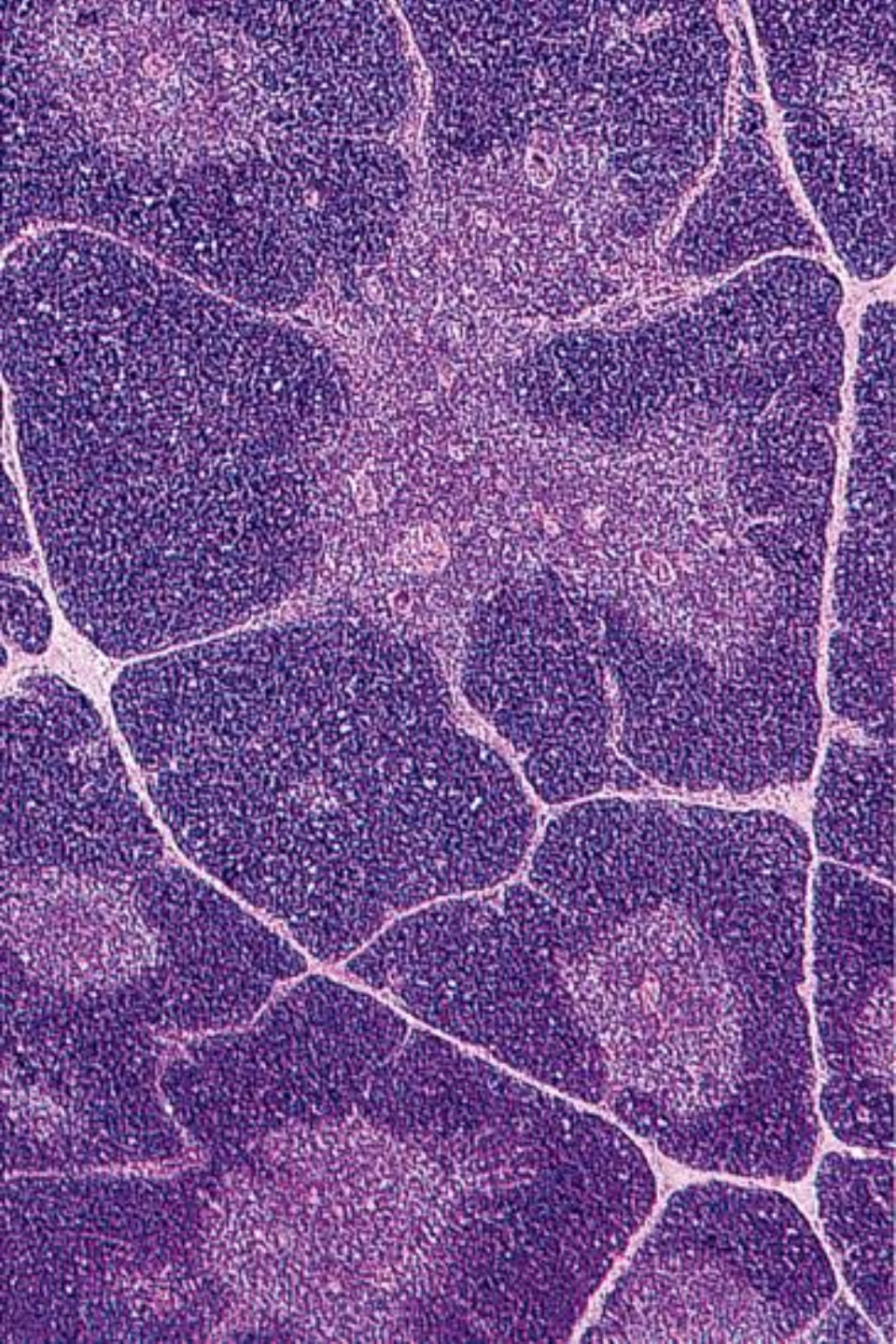
Reacția imună umorală.



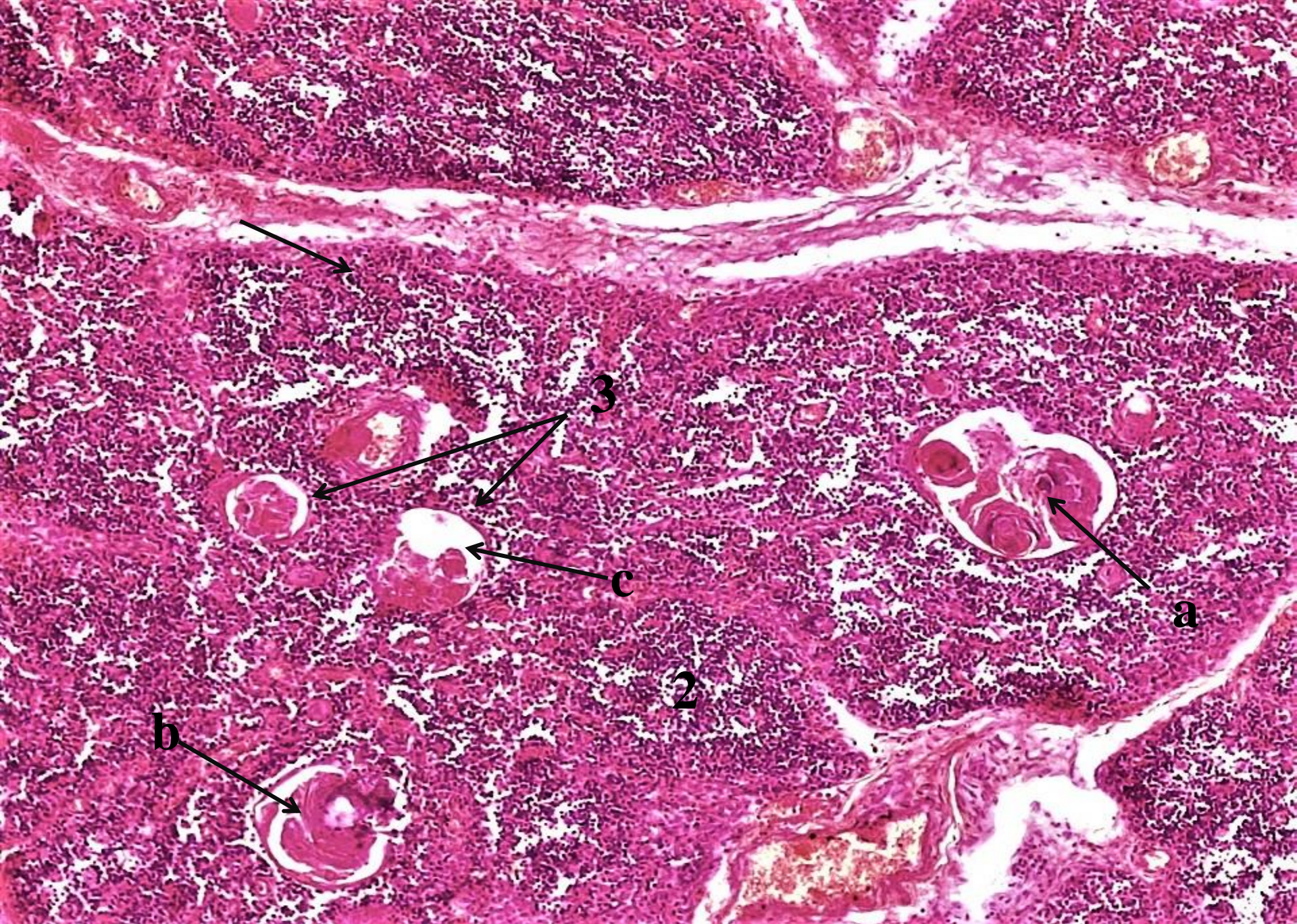
Reacția imună celulară.



№ 200. Hiperplazia foliculilor limfatici lienali în stimulare antigenică. (*Colorație H-E.*)



**Structura normală a timusului,
A, B - involuția fiziologică.**



No 173. Involuția accidentală a timusului. Colorație H-E.

**Reacția de hipersensibilitate de tip
imediat (tip I).**



Dermatită alergică (atopică).

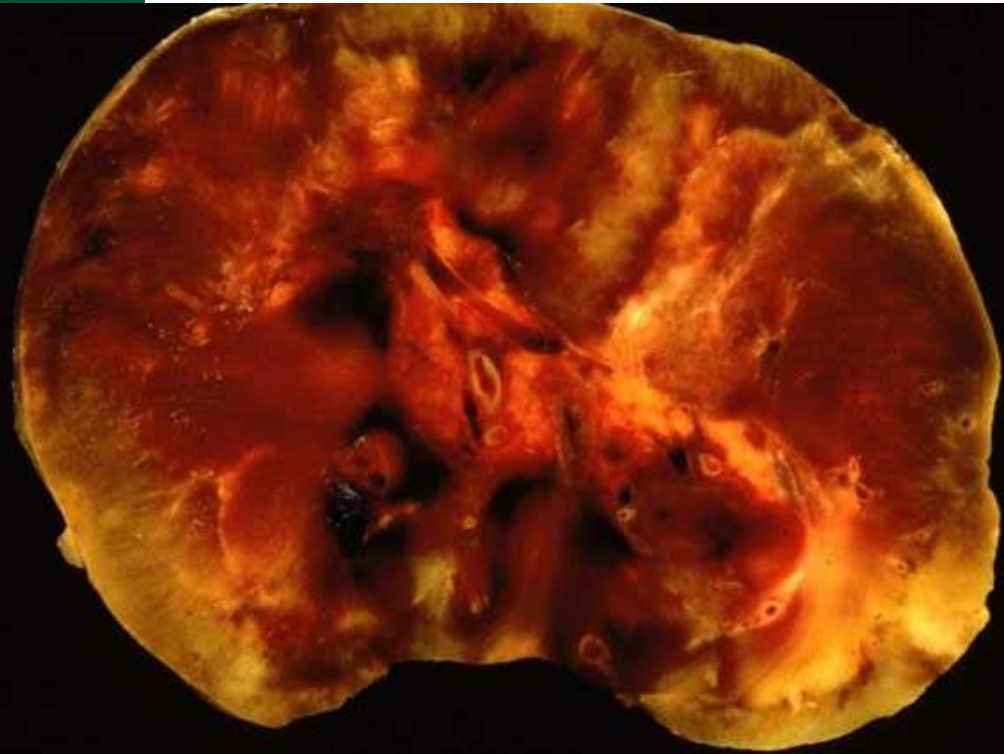
Edem Quincke.



**Reacția de hipersensibilitate,
mediată de anticorpi sau de
tip citotoxic (tip II).**

Rejet acut a grefei renale.

**Hidrops fetal
(boala hemolitică a nou-
născutului).**





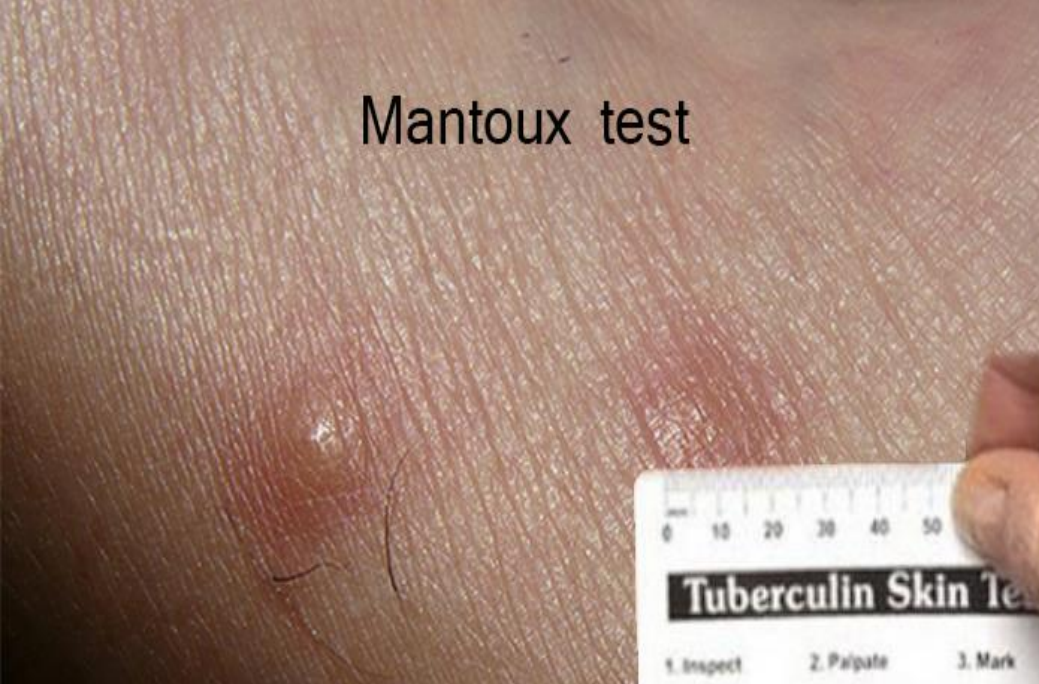
**Reacția de hipersensibilitate
mediată de complexe imune
toxice (de tip III)**

Artrită reumatoidă.

**Glomerulonefrită
lupică.**



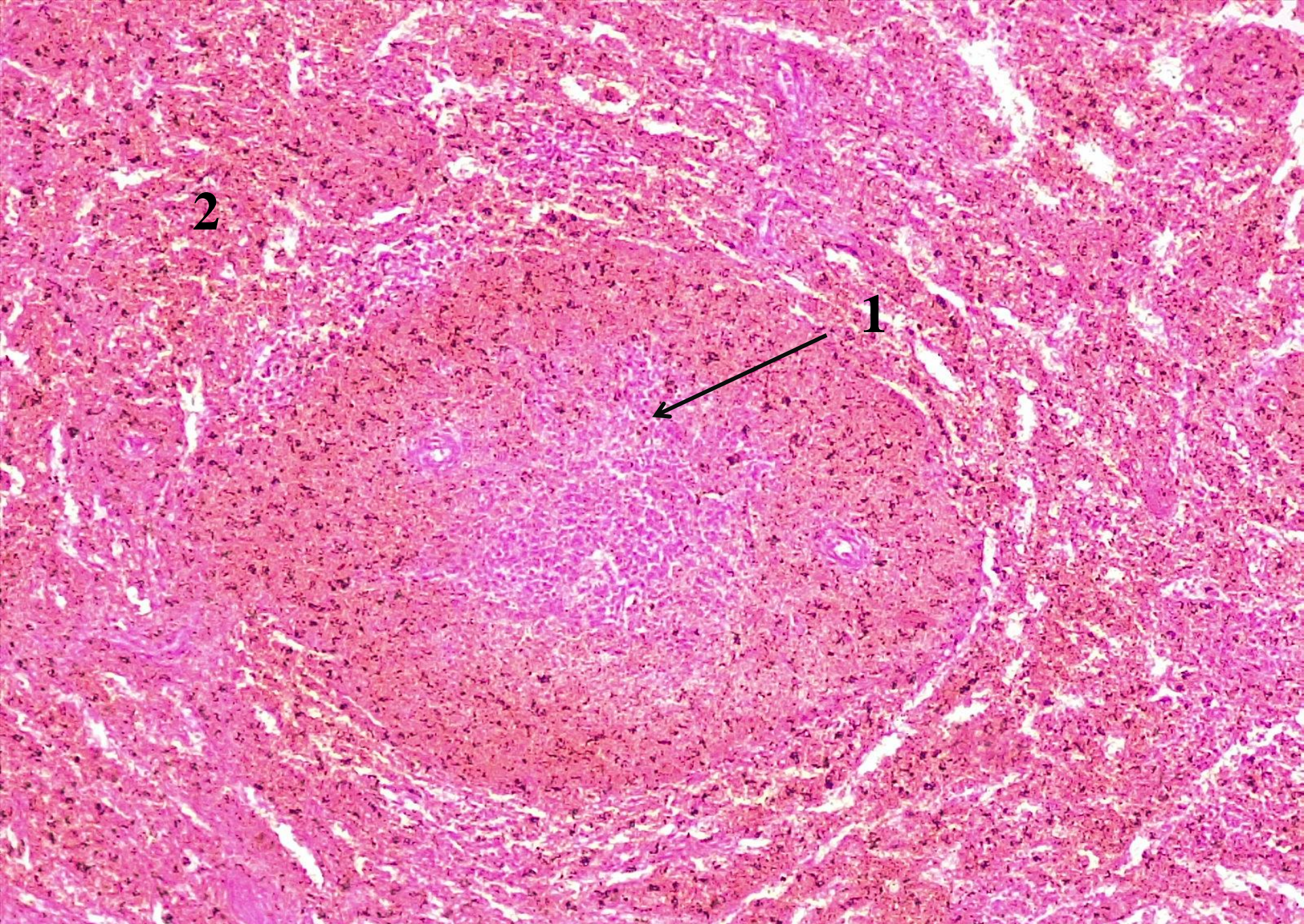
Mantoux test



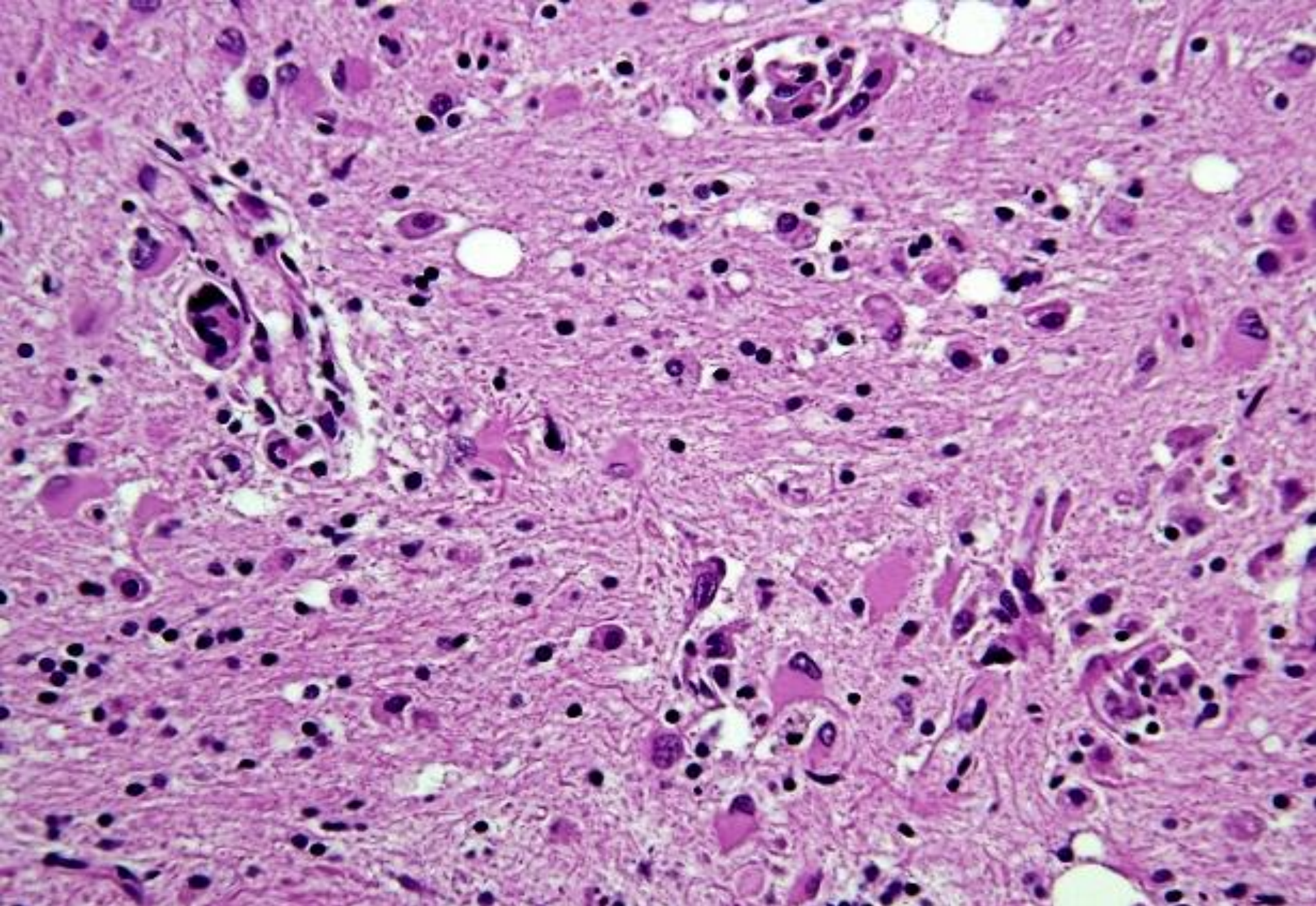
**Reacția de hipersensibilitate,
mediată de celulele T
(de tip celular, tip IV).**

Dermatită de contact.





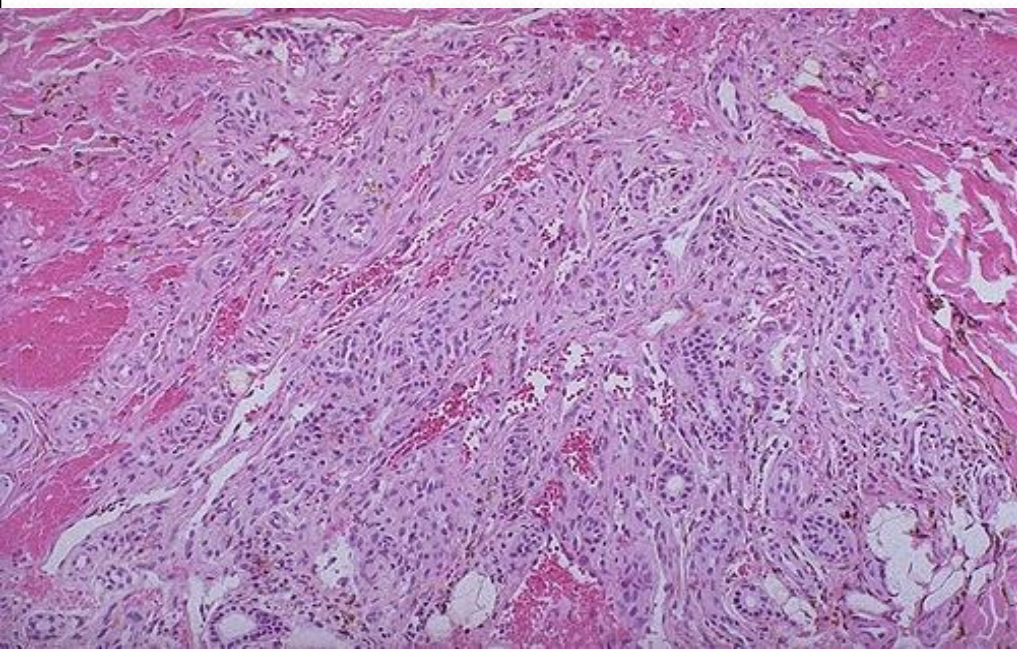
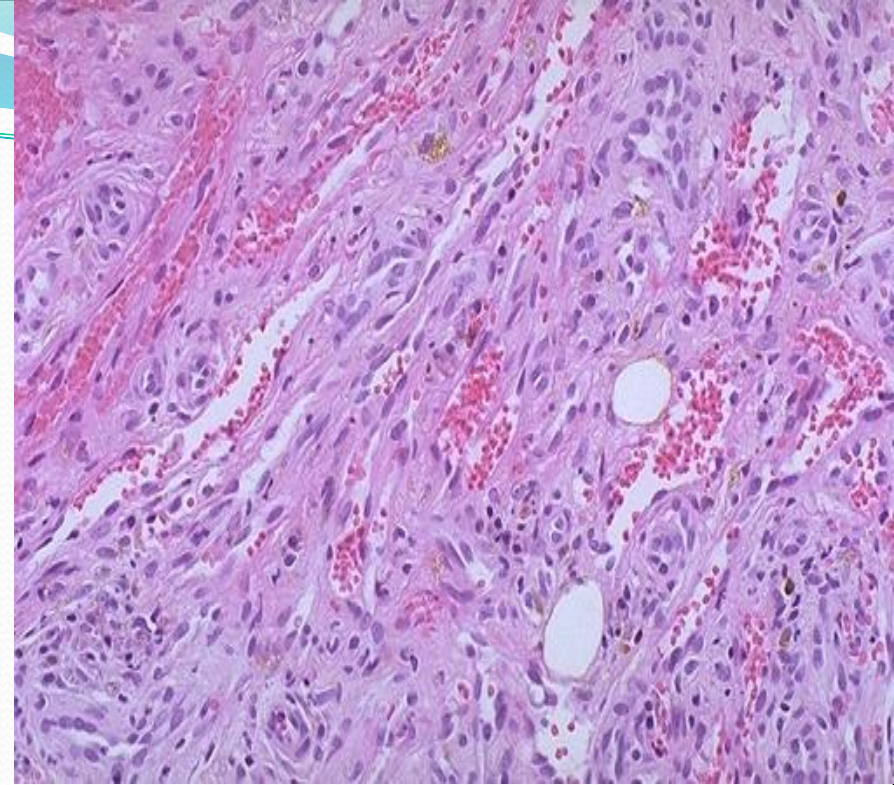
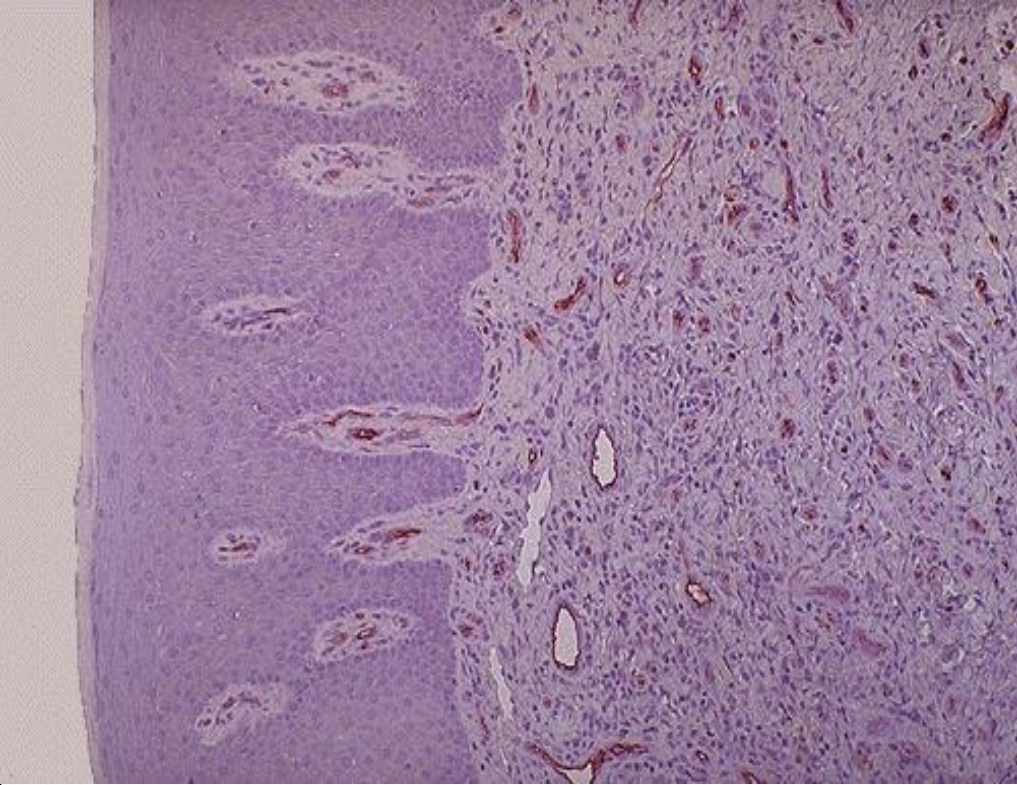
№ 201. Hipoplazia foliculilor limfatici lienali în sindromul imunodeficiar primar combinat. (Colorație H-E.).



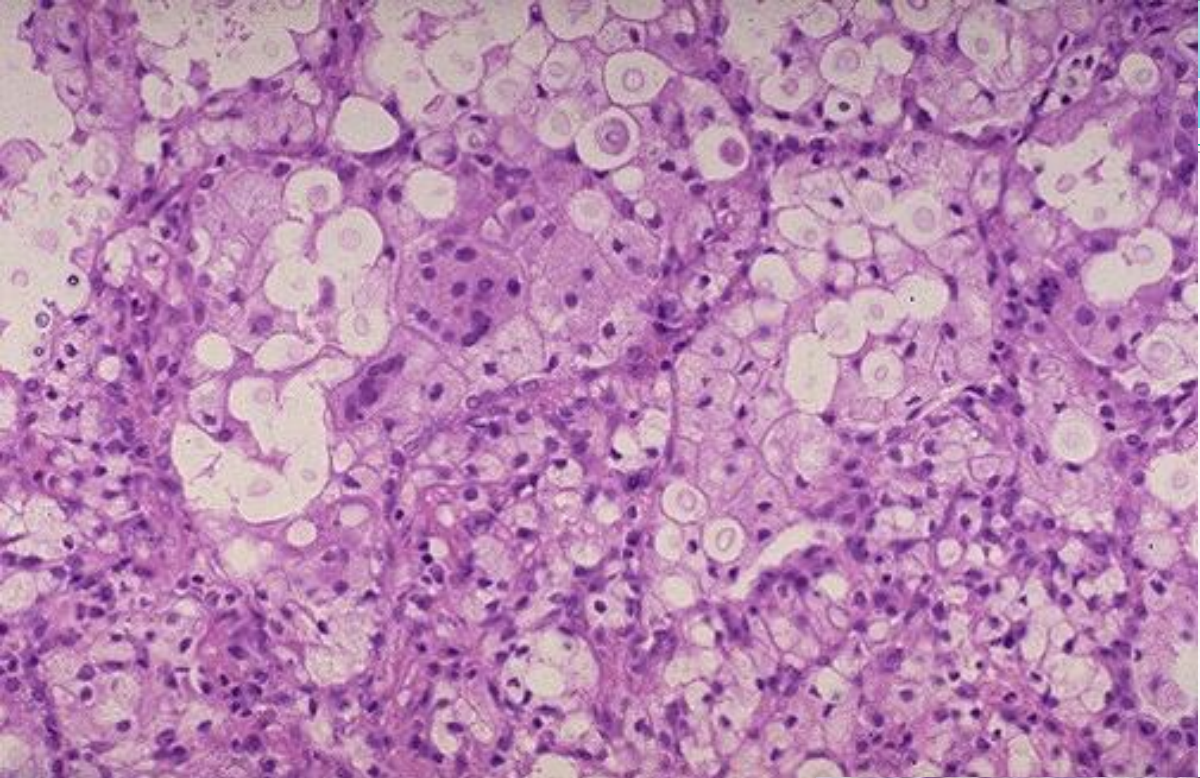
Encefalopatia HIV cu prezența celulelor gigante, rezultate din fuziunea macrofagelor infectate cu HIV.



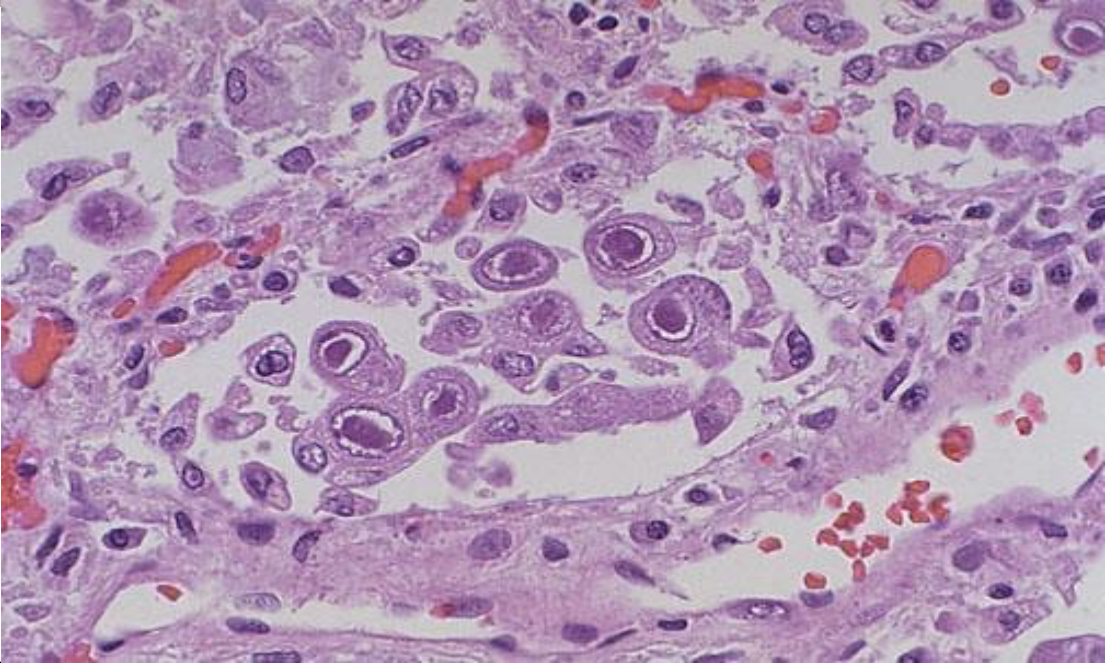
Sarcom Kaposi (*piele, ficat, stomac*).



Sarcom Kaposi
(*structuri vasculare, hemoragii, celule stromale fusiforme*)



**Infecție
citomegalovirală
pulmonară.**



**Criptococoza
pulmonară.**