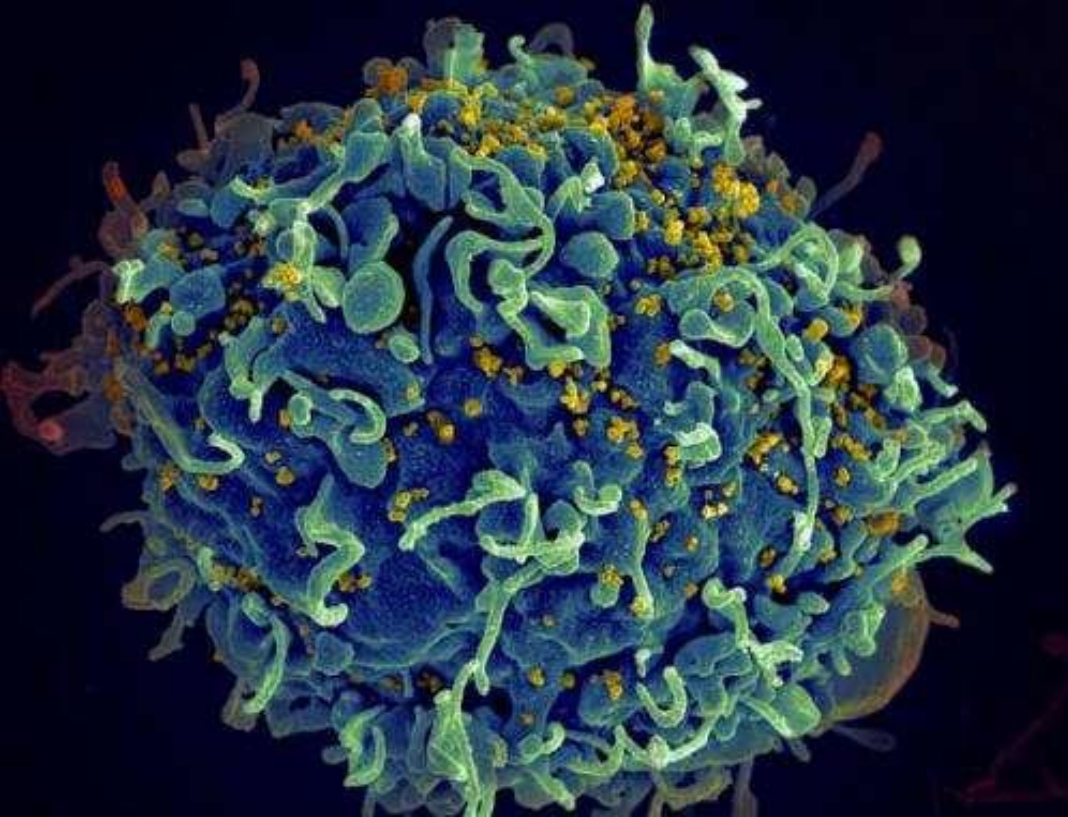




Tuberculoza. SIDA.



Туберкулез. СПИД.

Tuberculosis. AIDS.

Tema: Tuberculoza. SIDA

I. Micropreparate:

Nº 79. Tuberculoză miliară pulmonară. (*colorație H-E.*). **Indicații:**

1. Granulom tuberculos:
 - a. necroza cazeoasă în centrul granulomului;
 - b. stratul de celule epitelioid;
 - c. celule gigante polinucleate Langhans;
 - d. stratul de celule limfoide.
2. Țesutul pulmonar adiacent.

Nº 80. Tuberculoză miliară hepatică. (*colorație H-E.*). **Indicații:**

1. Granulom tuberculos.
2. Țesutul hepatic adiacent.

Nº 82. Tuberculoza miliară renală. (*colorație H-E.*). **Indicații:**

1. Granulom tuberculos.
2. Țesutul renal adiacent.

Nº 85. Pneumonie cazeoasă. (*colorație H-E.*). **Indicații:**

1. Zona de necroză cazeoasă.
2. Septuri alveolare lipsite de nucleu (carioliză).
3. Țesut fibroconjunctiv infiltrat cu limfocite.
4. Țesut pulmonar adiacent emfizematos.

II. Macropreparate:

Nº 43. Pneumonie cazeoasă.

Nº 44. Tuberculoză pulmonară fibro-cavitară.

Nº 144. Tuberculoza nodulilor limfatici mediastinali.

Nº 153. Spondilită tuberculoasă.

Тема: Туберкулез. СПИД.

I. Микропрепараты:

№ 79. Милиарный туберкулез легких. (окраска Г-Э.). Обозначения:

1. Туберкулезная гранулема:
 - а. казеозный некроз в центре гранулемы;
 - б. слой эпителиоидных клеток;
 - в. гигантские многоядерные клетки Лангганса;
 - г. слой лимфоидных клеток.
2. Прилежащая легочная ткань.

№ 80. Милиарный туберкулез печени. (окраска Г-Э.). Обозначения:

1. Туберкулезная гранулема.
2. Прилежащая печеночная ткань.

№ 82. Милиарный туберкулез почек. (окраска Г-Э.). Обозначения:

1. Туберкулезная гранулема.
2. Прилежащая почечная ткань.

№ 85. Казеозная пневмония. (окраска Г-Э.). Обозначения:

1. Очаг казеозного некроза.
2. Межальвеолярные перегородки без ядер (кариолизис).
3. Соиденительная ткань, инфильтрированная лимфоидными клетками.
4. Прилегающая эмфизематозная легочная ткань.

II. Макропрепараты:

№ 43. Казеозная пневмония.

№ 44. Фиброзно-кавернозный туберкулез легких.

№ 144. Туберкулез перибронхиальных лимфоузлов.

№ 153. Туберкулезный спондилит.

Tuberculosis. AIDS

I. Microspecimens:

№ 79. Pulmonary miliary tuberculosis. (*H-E. stain*). **Indications:**

1. Tuberculous granuloma:
 - a. caseous necrosis in the center of granuloma;
 - b. layer of epithelioid cells;
 - c. giant cells Langhans;
 - d. lymphoid cell layer.
2. Adjacent lung tissue.

№ 80. Hepatic miliary tuberculosis. (*H-E. stain*). **Indications:**

1. Miliary nodules in the liver tissue.
2. Adjacent liver tissue.

№ 82. Renal miliary tuberculosis. (*H-E. stain*). **Indications:**

1. Tuberculous granuloma.
2. Adjacent renal tissue.

№ 85. Caseous pneumonia. (*H-E. stain*). **Indications:**

1. Caseous necrosis area.
2. Inter-alveolar septa without nuclei (karyolysis).
3. Connective tissue infiltrated by lymphoid cells.
4. Adjacent emphysematous pulmonary tissue.

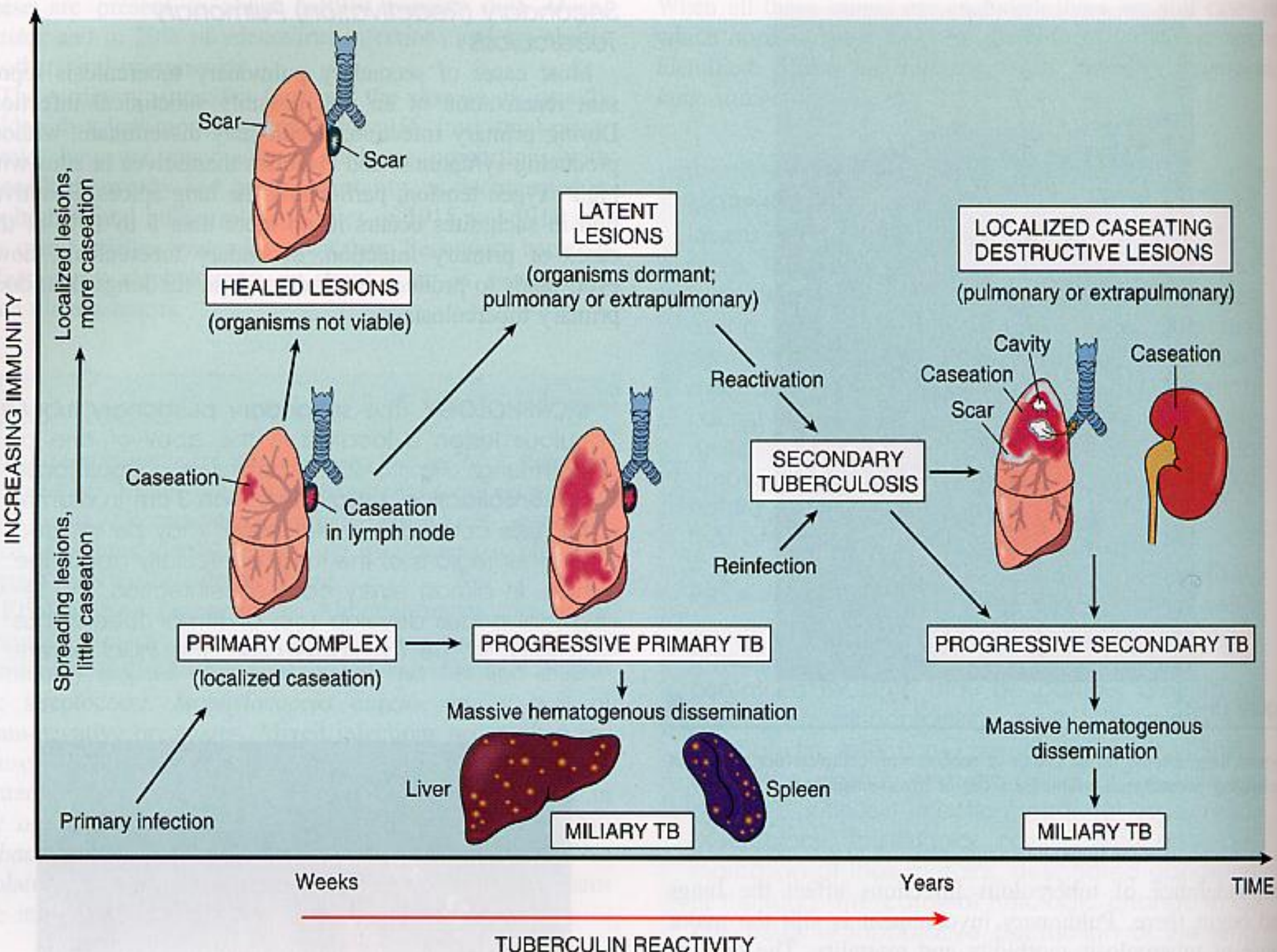
II. Macrospecimens:

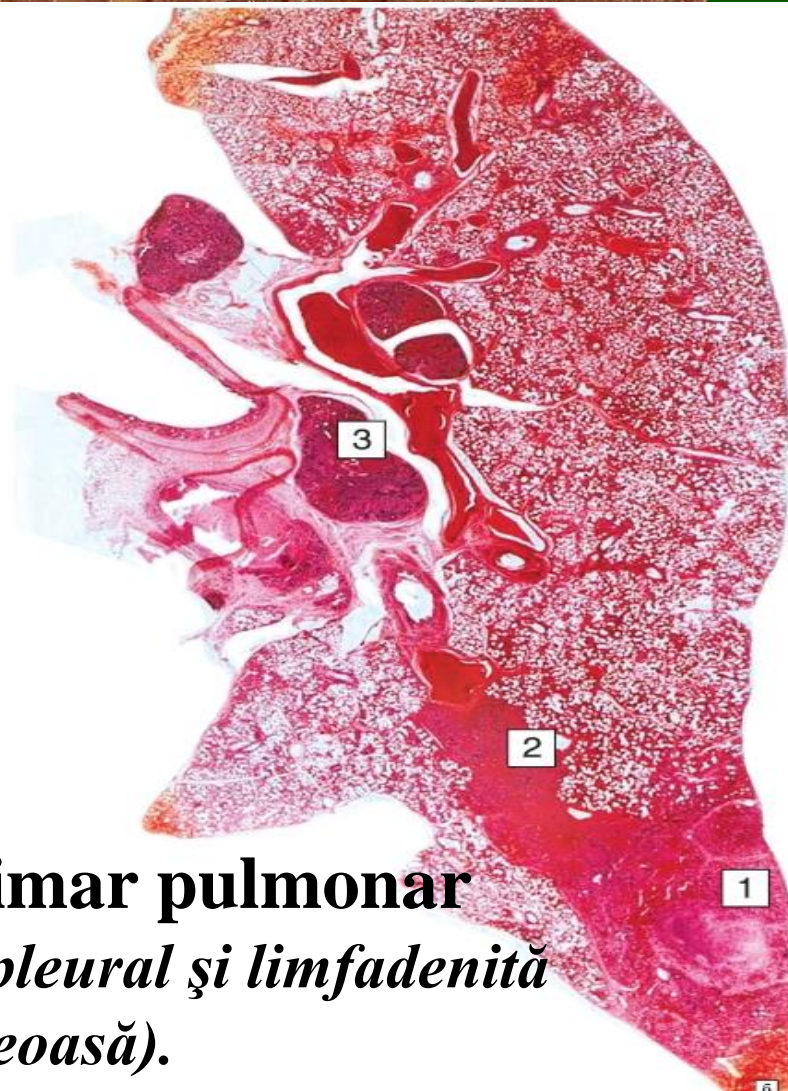
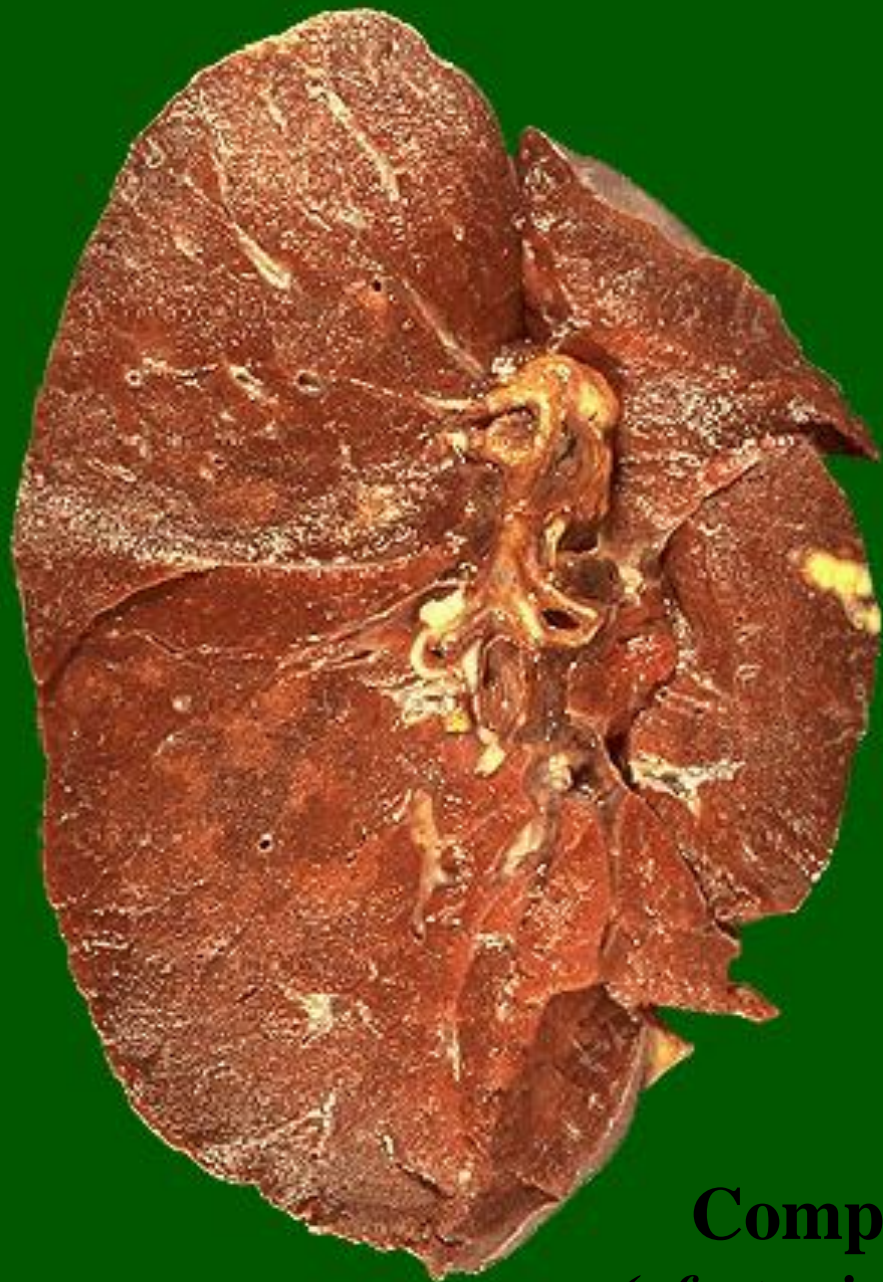
№ 44. Fibrocavitary tuberculosis.

№ 43. Caseous pneumonia.

№ 144. Tuberculosis of peribronchial lymph nodes.

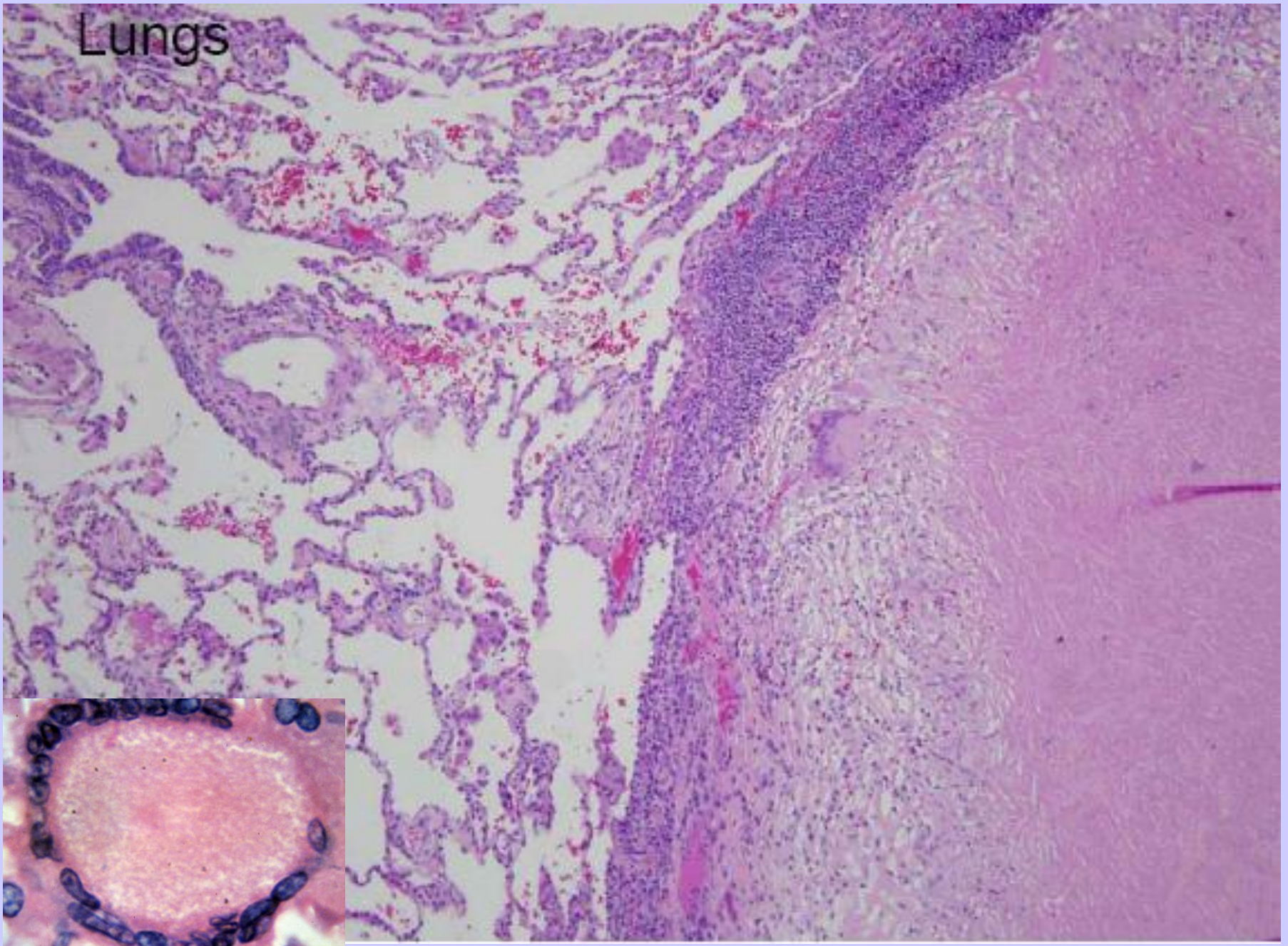
№ 153. Tuberculous spondylitis.



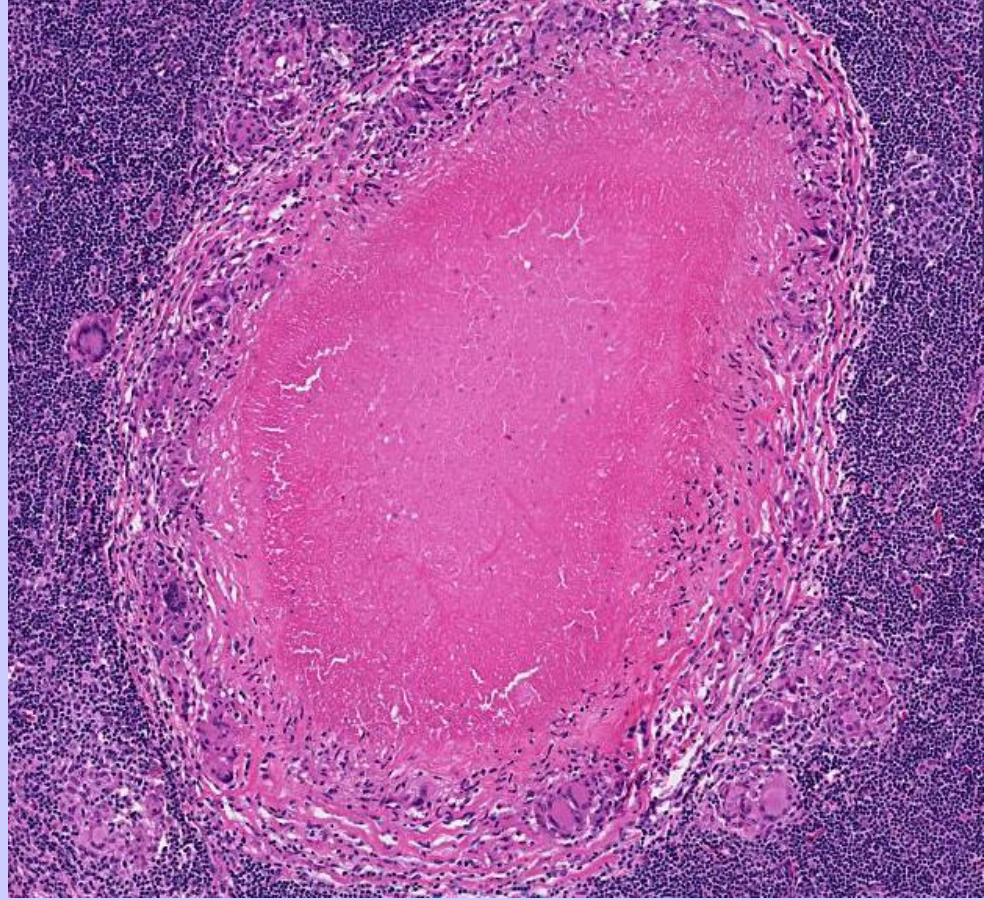
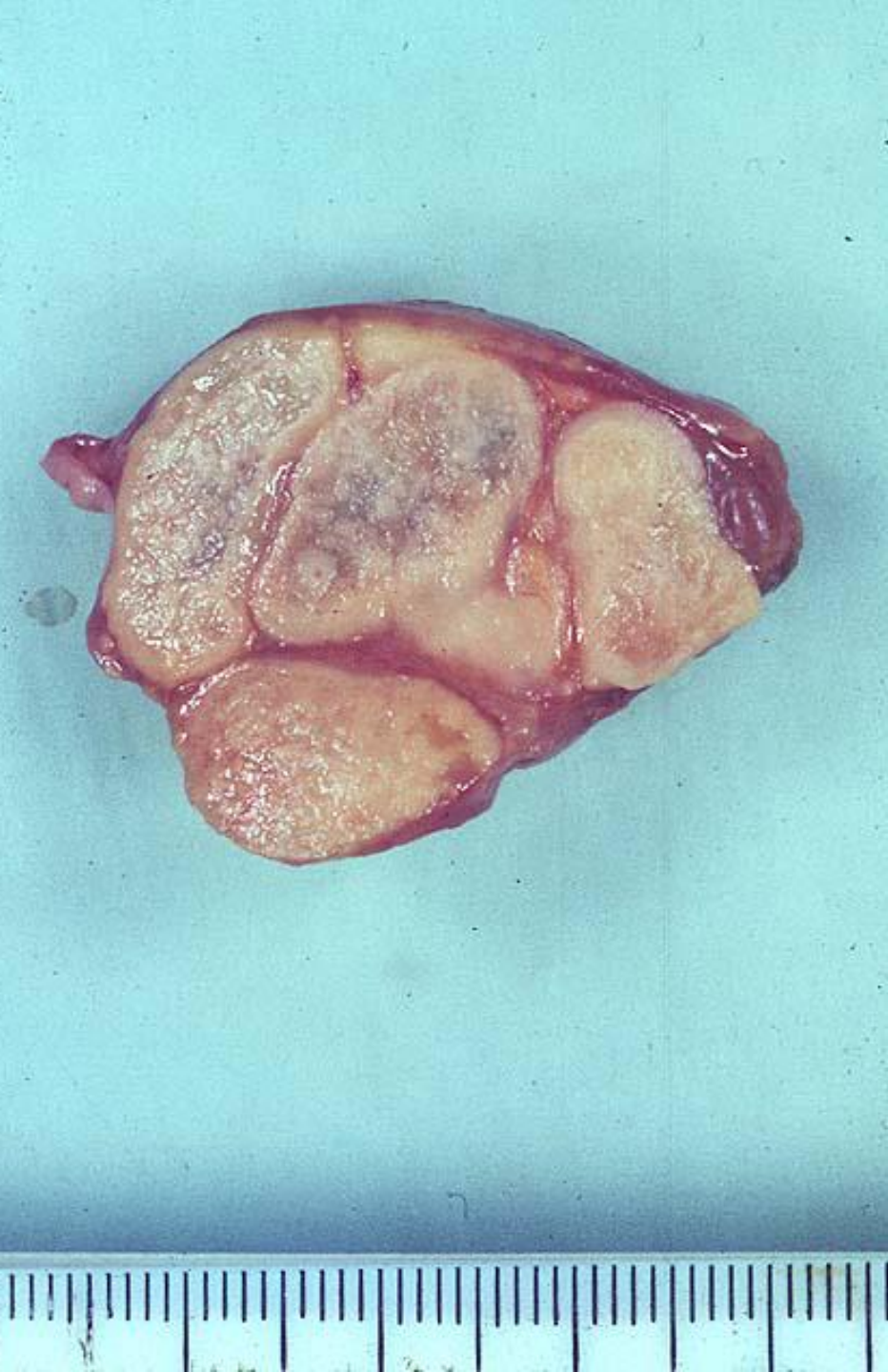


Complex primar pulmonar
(afect primar subpleural și limfadenită
cazeoasă).

Lungs



Afect primar pulmonar.



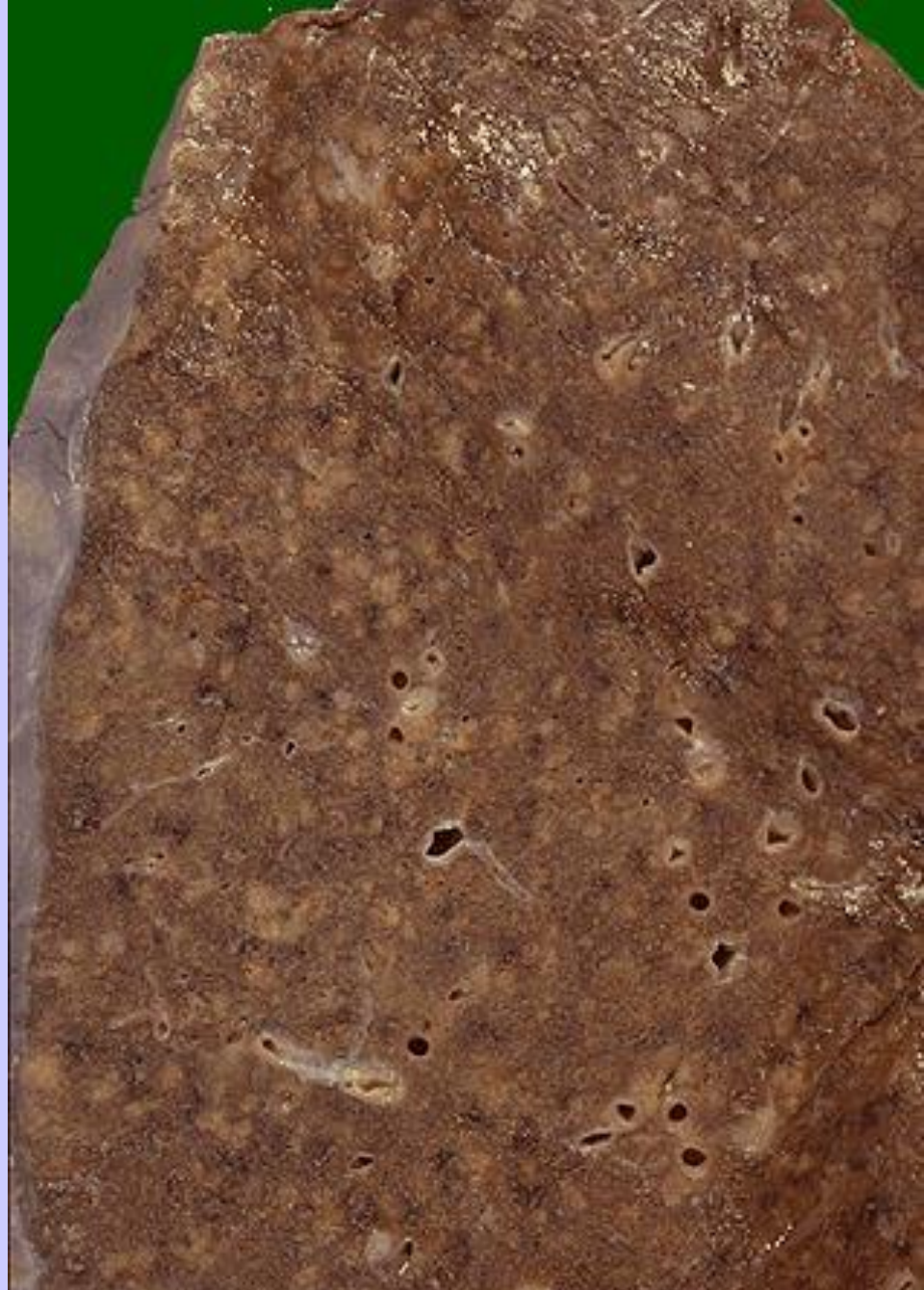
Limfadenită tuberculoasă.



**Complex primar
Intestinal.**

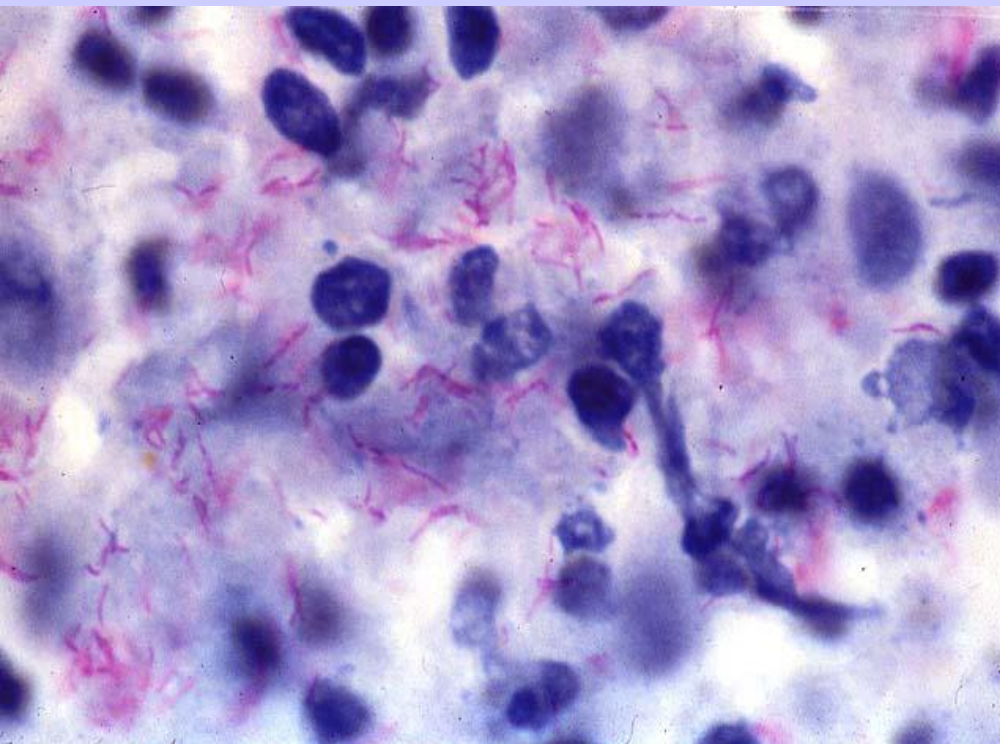
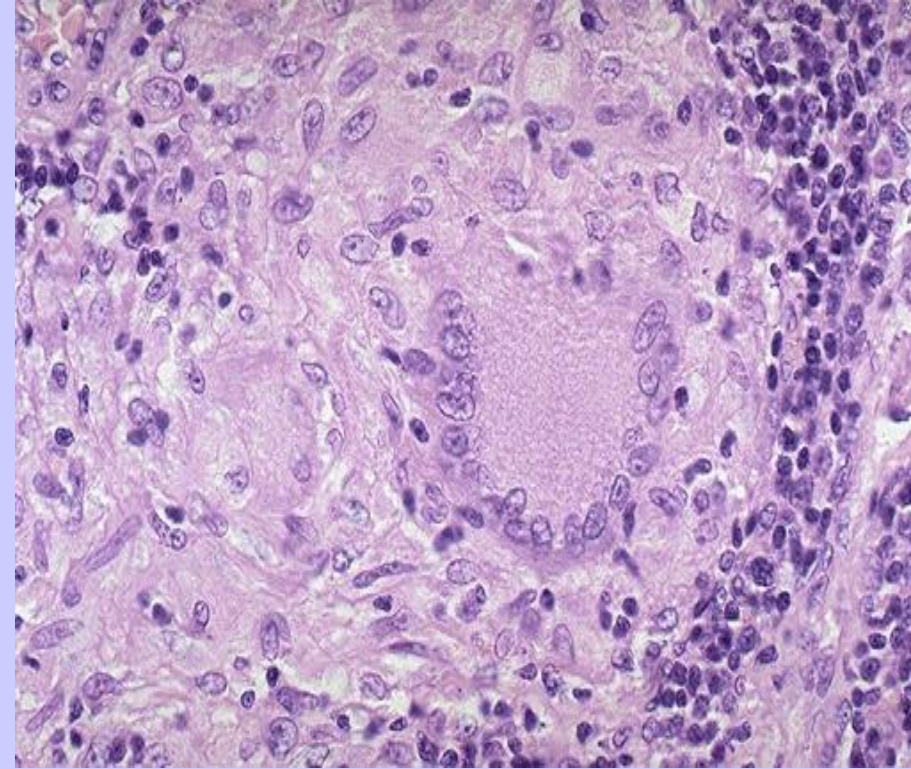
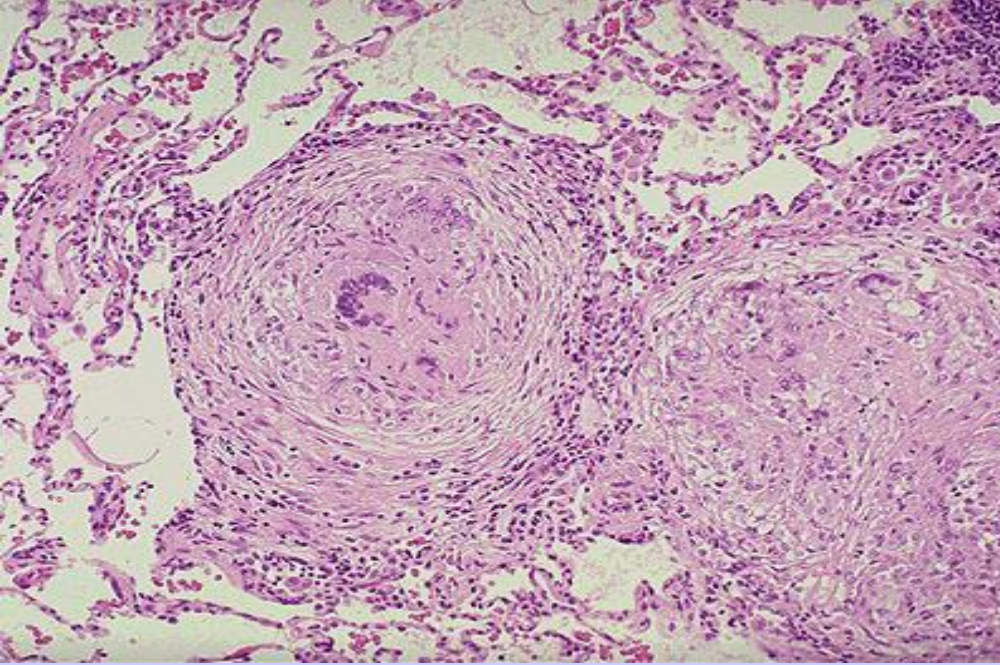


Complex primar vindecat
(cicatrizarea afectului primar și calcificate în limfoganglioni).

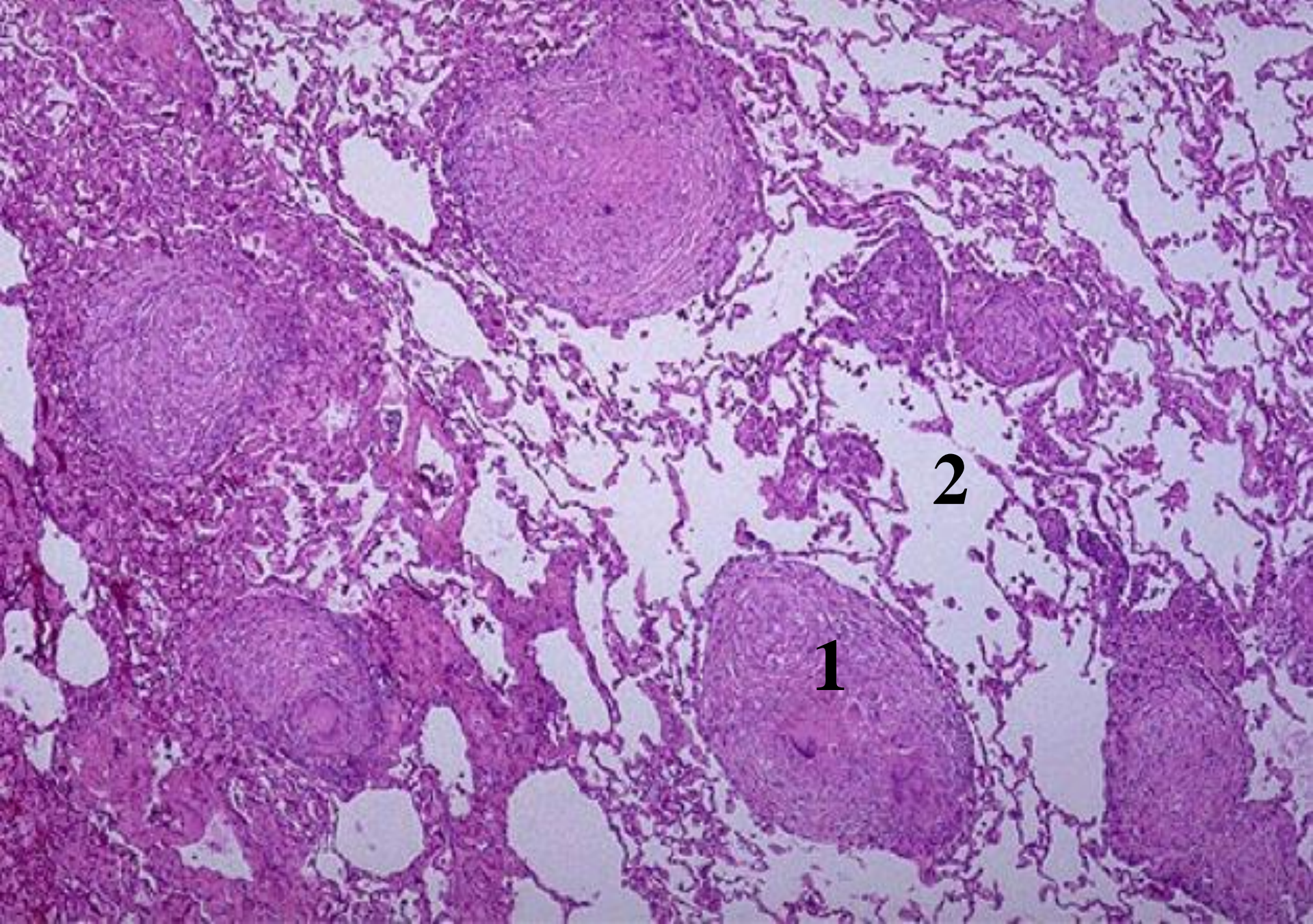


Tuberculoză miliară pulmonară.





**Granuloame tuberculoase
cu celule gigante Langhans,
micobacterii (*colorație Ziehl-
Nielsen*).**

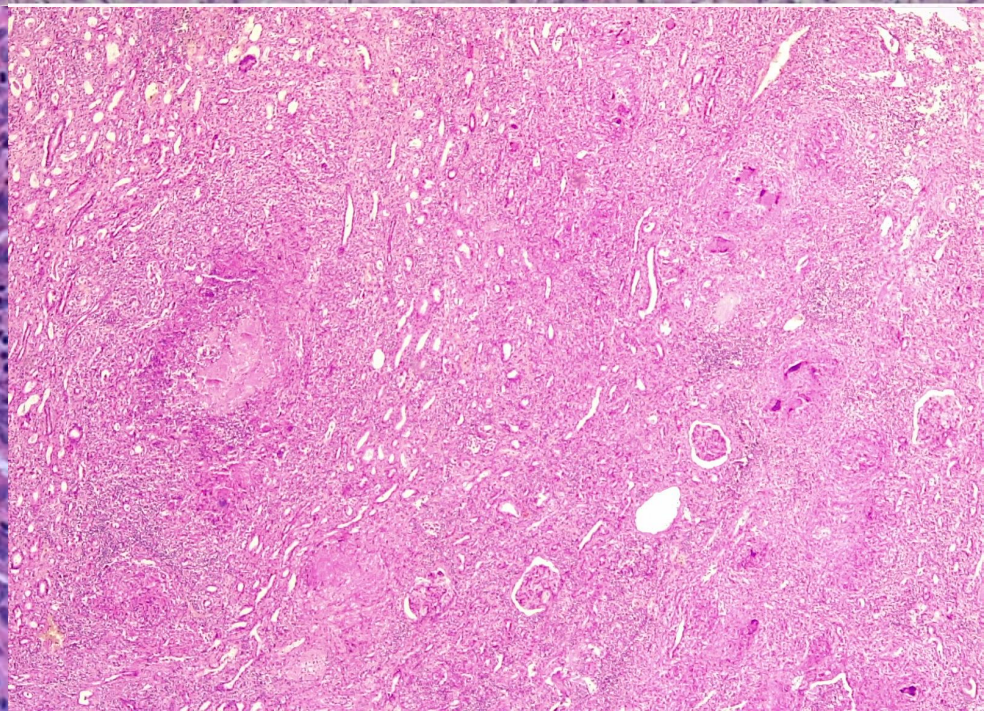
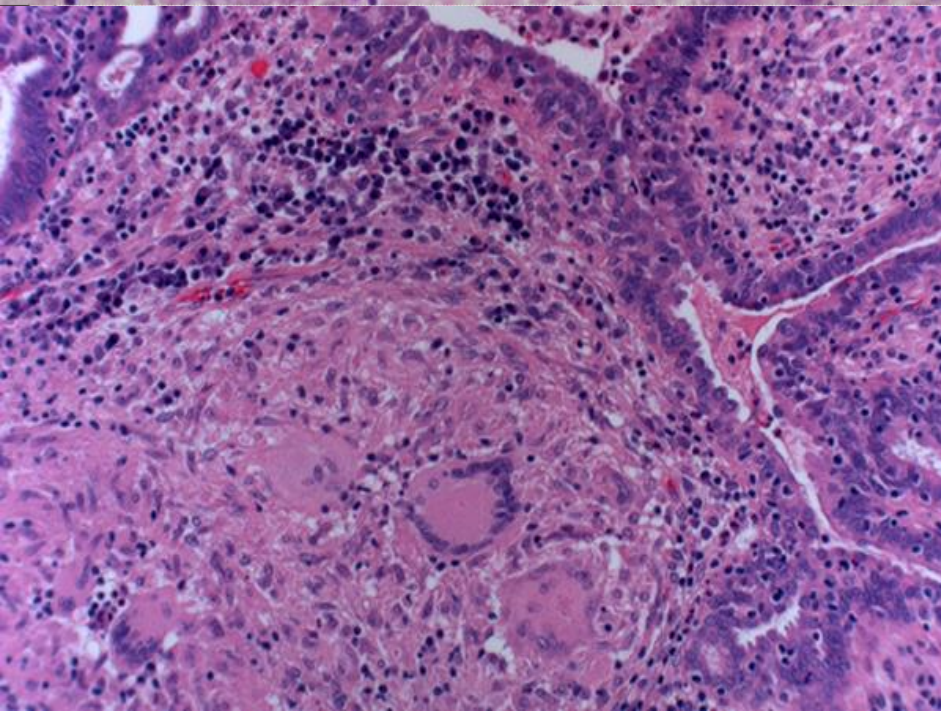


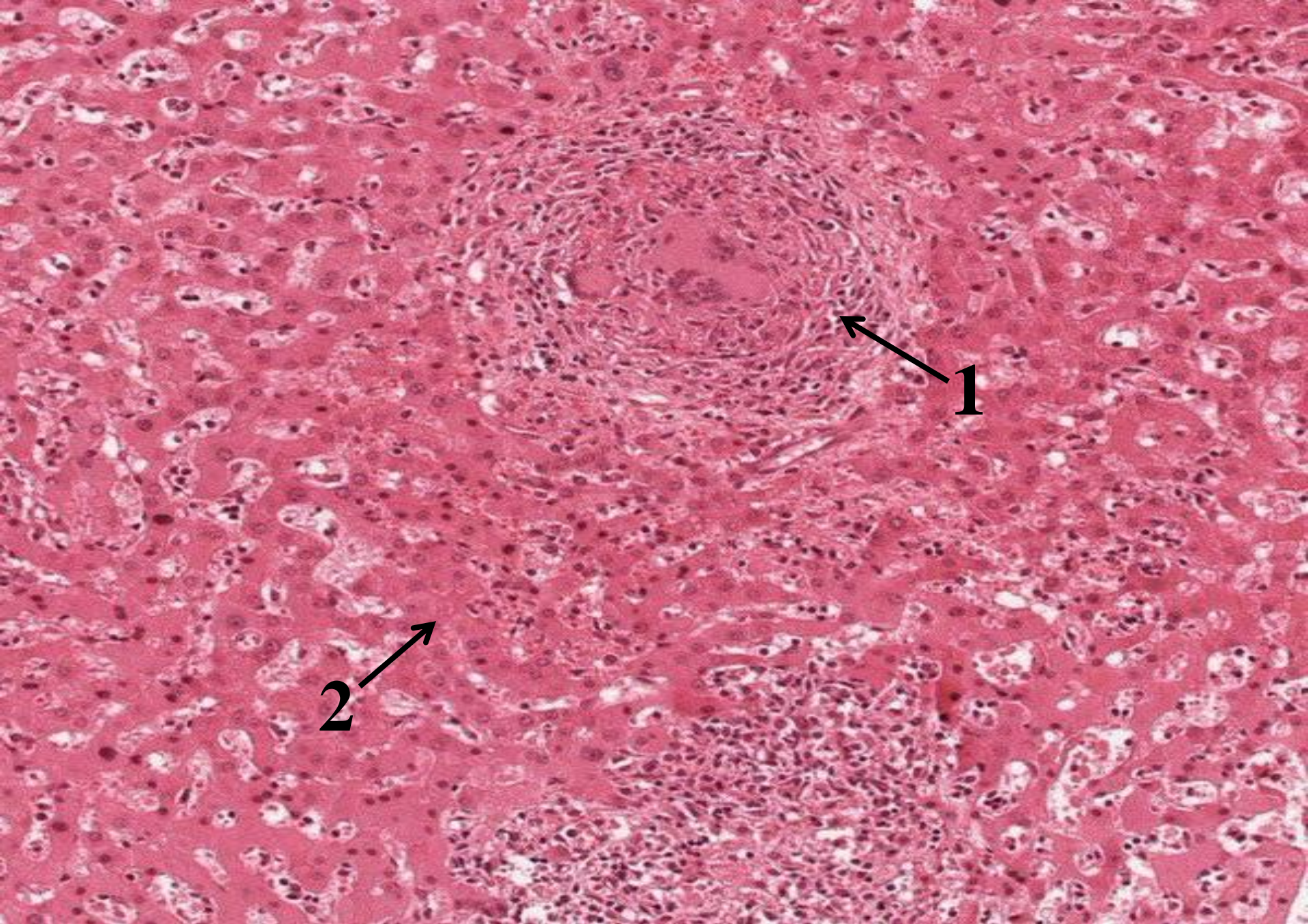
№ 79. Tuberculoză miliară pulmonară. (colorație H-E).

Liver

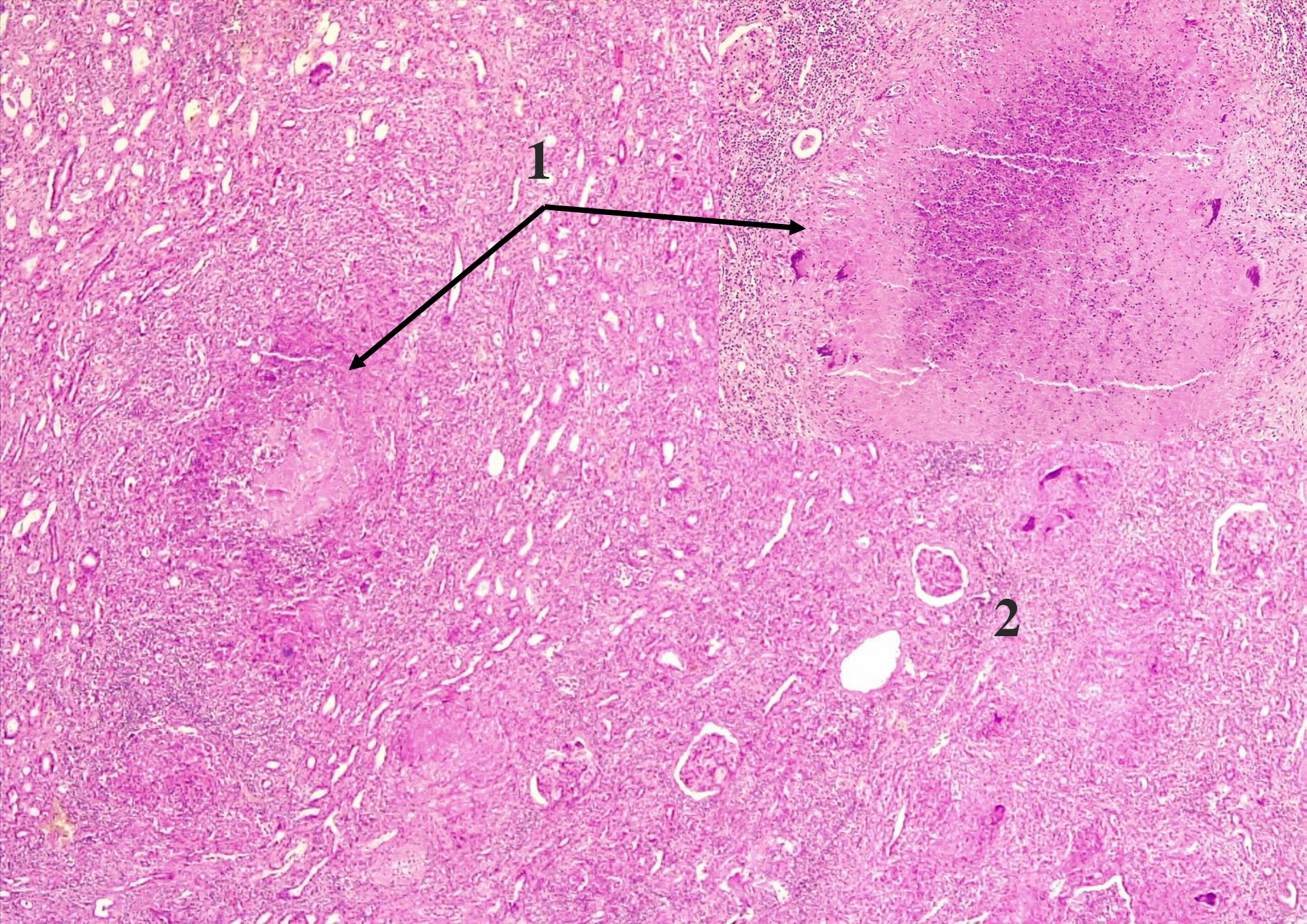
Adrenals

Tuberculoză hematogenă, granuloame în ficat, suprarenală, salpinge și rinichi.

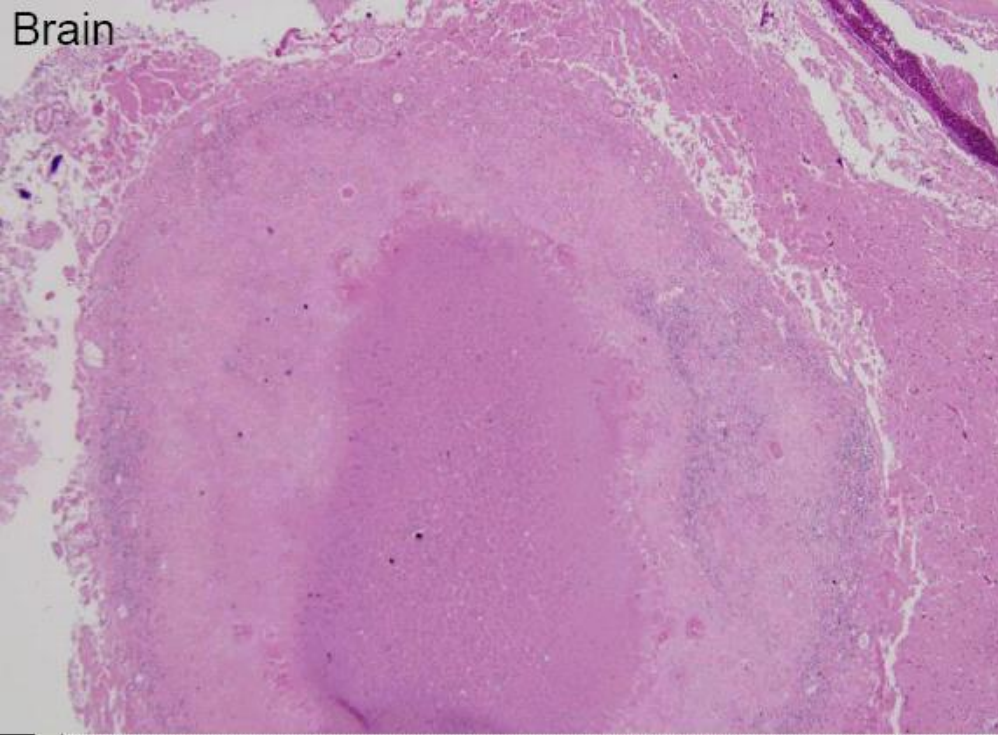




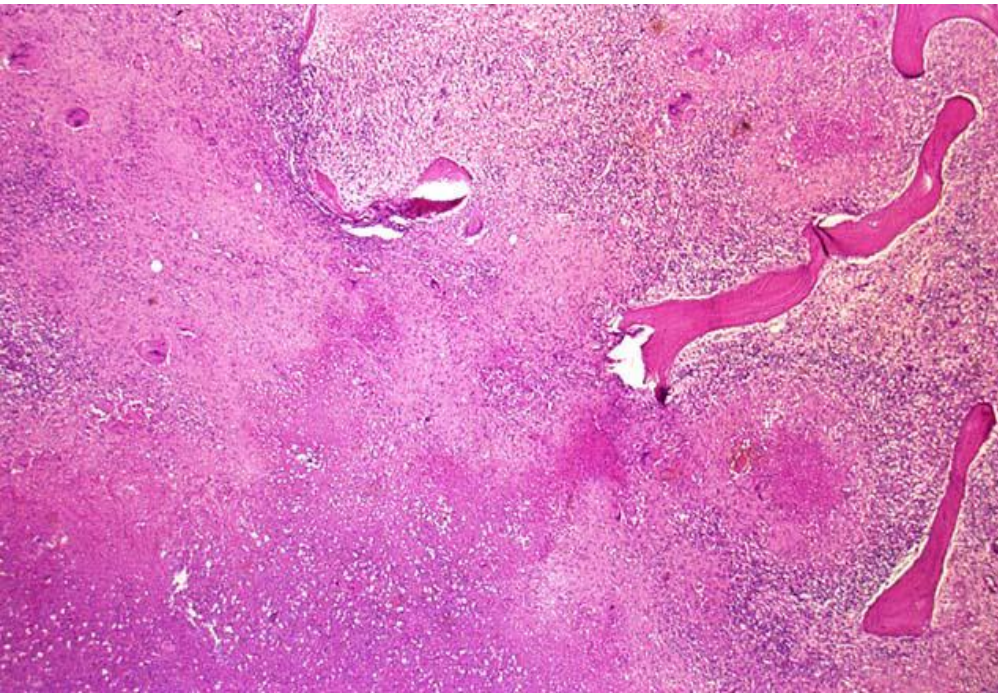
№ 80. Tuberculoză miliară hepatică. (colorație H-E).



№ 82. Tuberculoza miliară renală. (Colorație H-E).

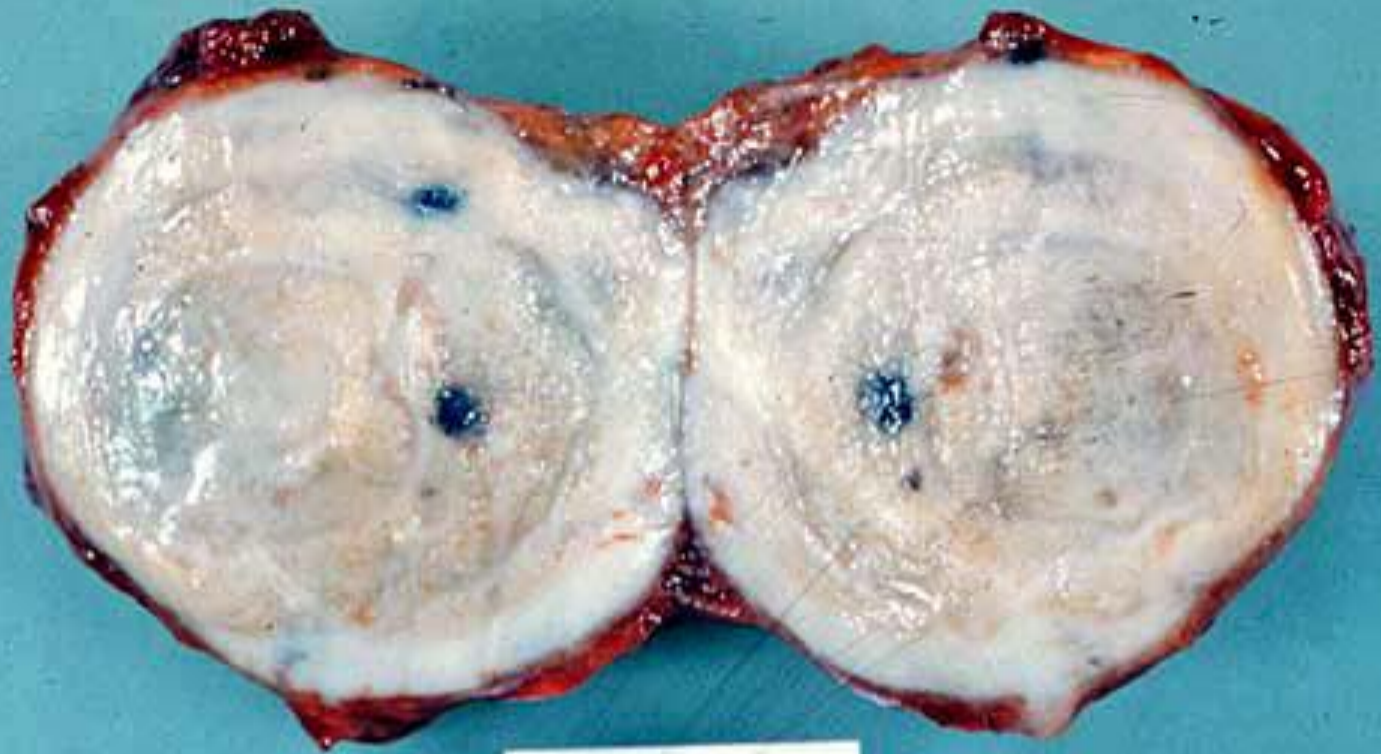


**Tuberculoză hematogenă,
granuloame în creier și
vertebră.**

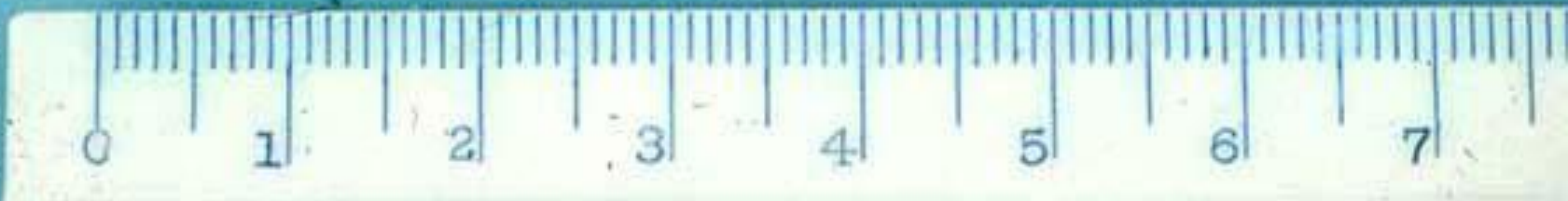




**Spondilită tuberculoasă
(boala Pott).**



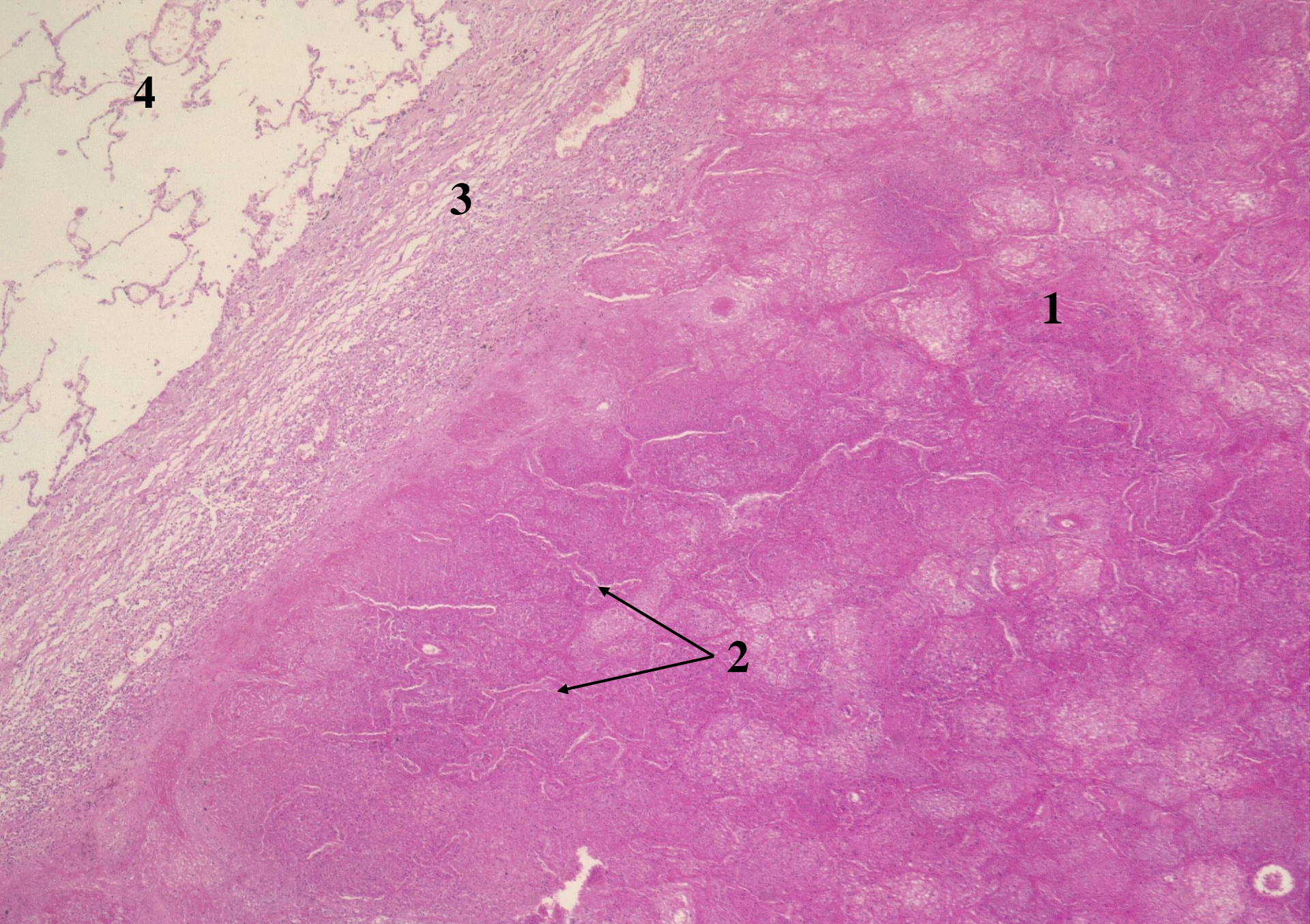
15.439



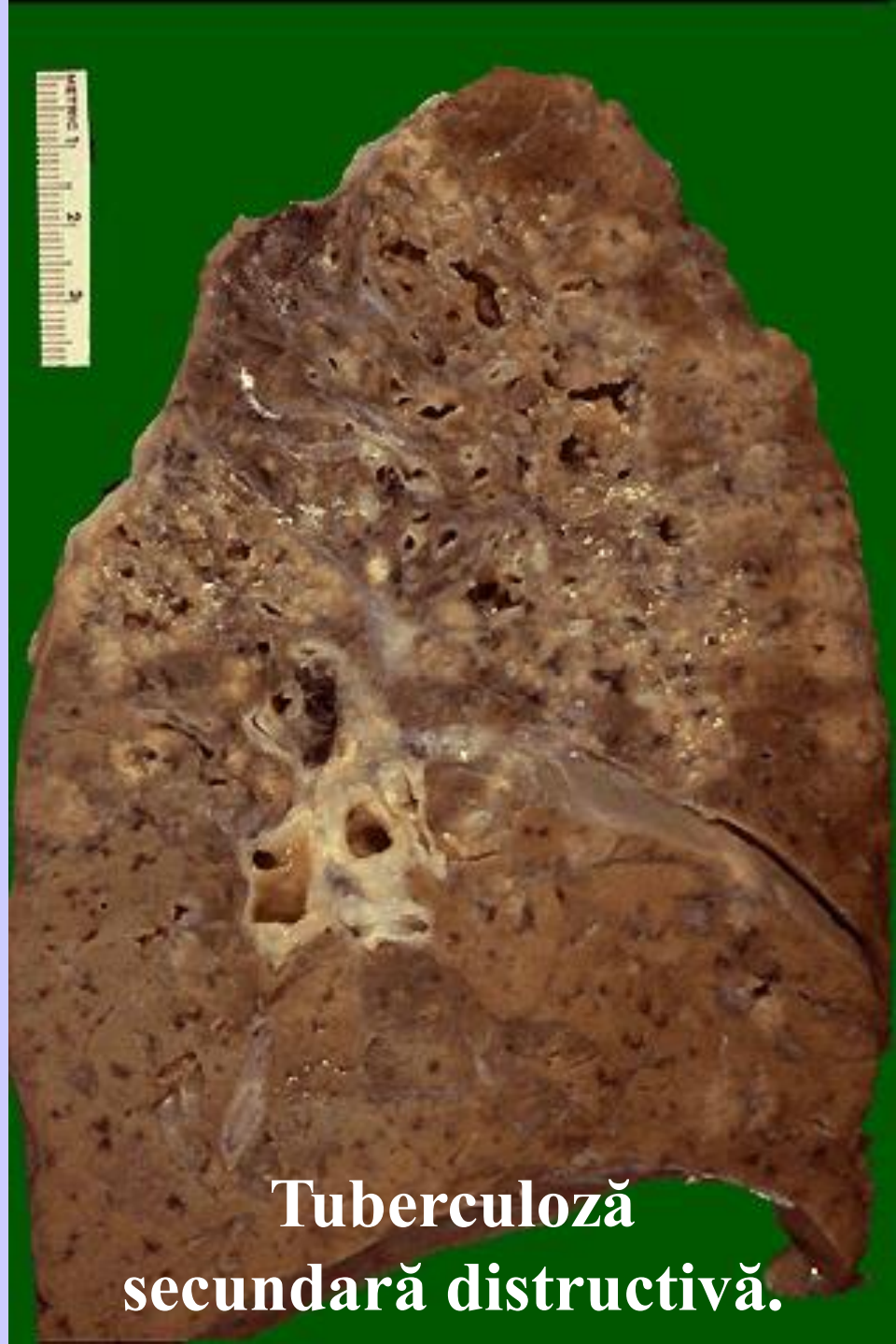
Tuberculom pulmonar încapsulat.



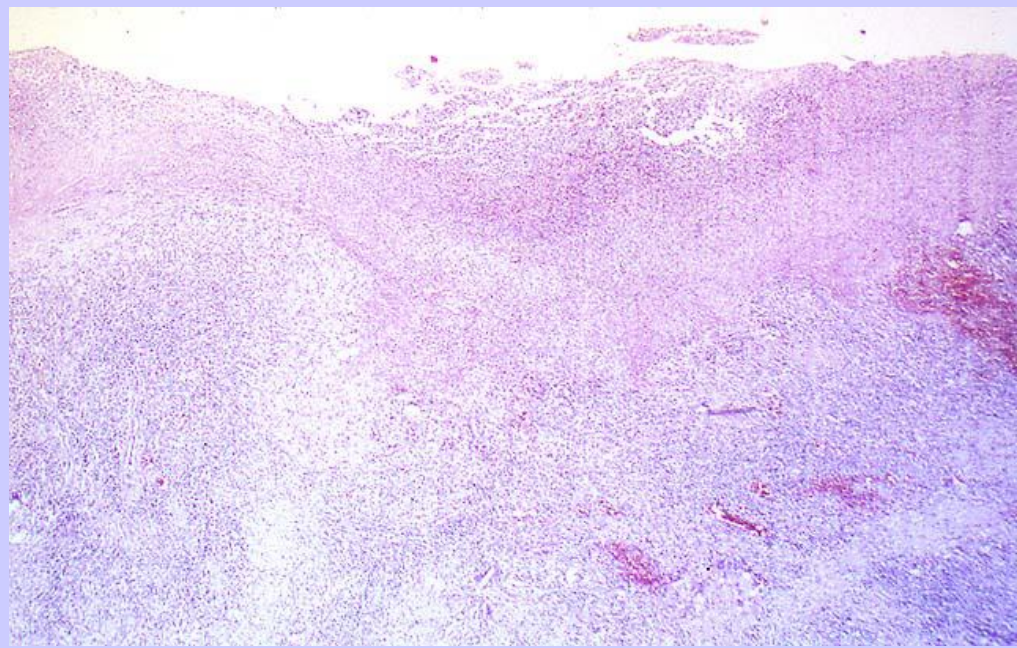
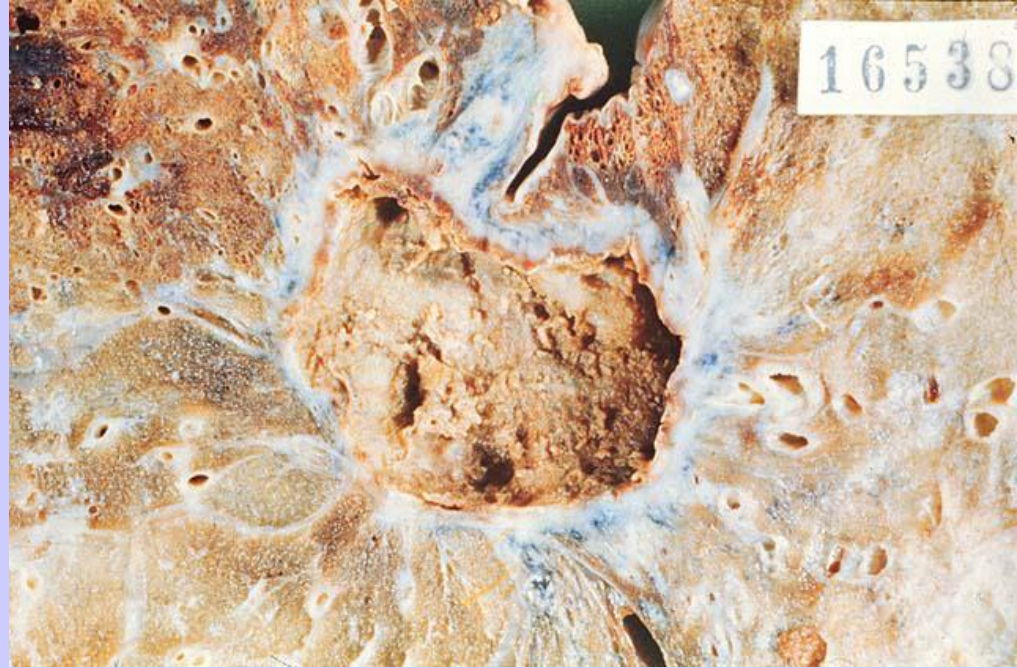
Pneumonie cazeoasă.



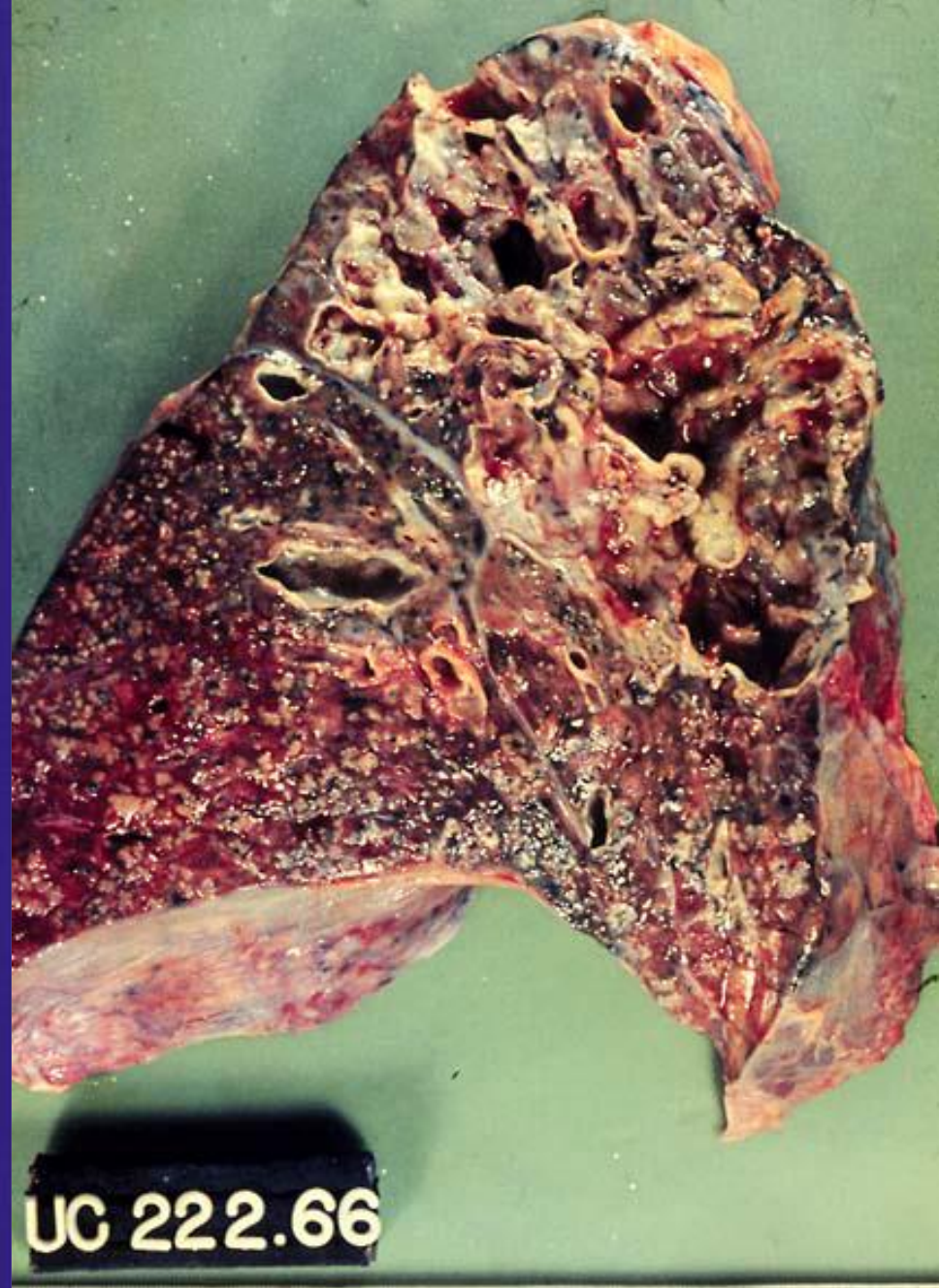
№ 85. Pneumonie cazeoasă. (colorație H-E.).



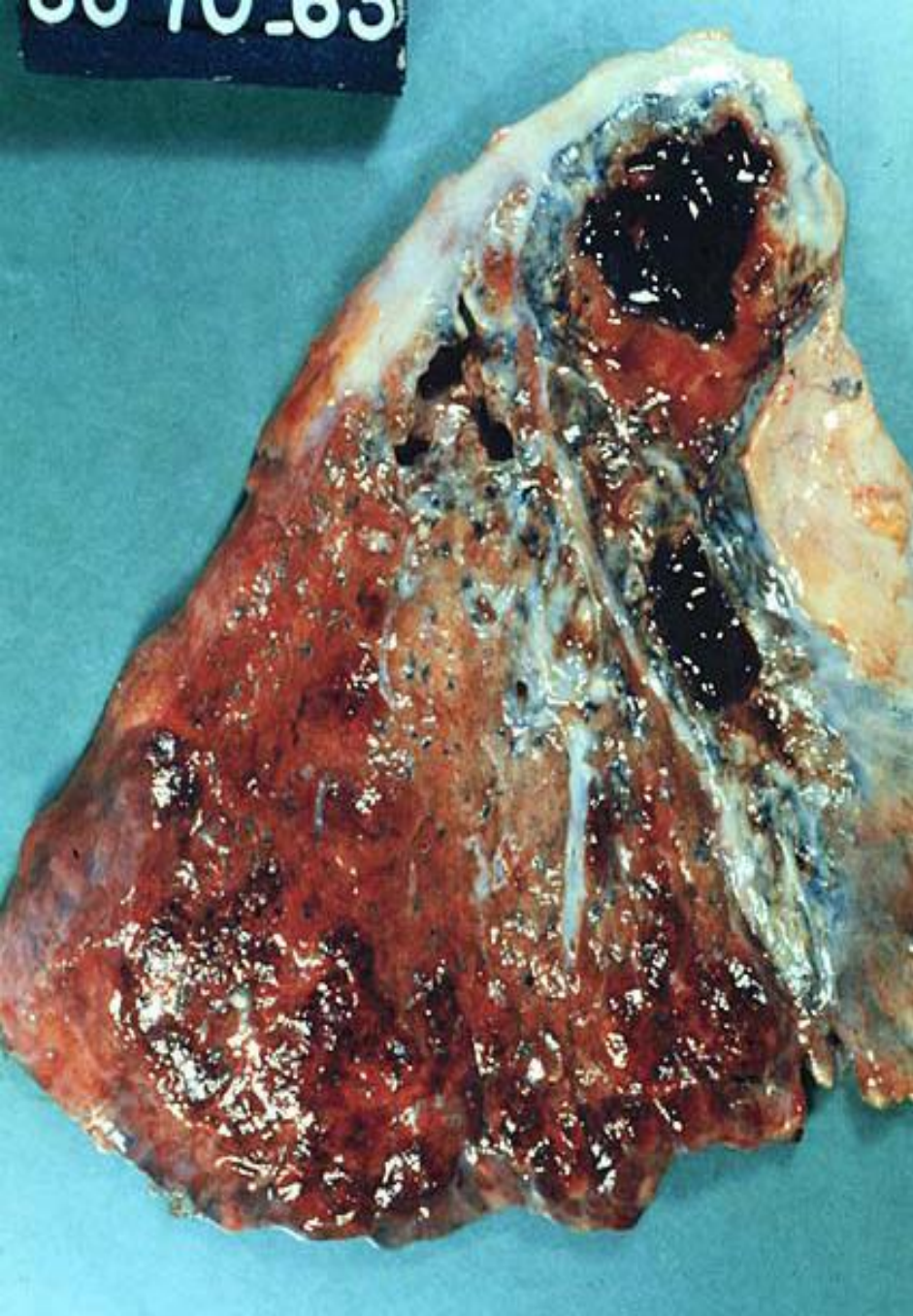
**Tuberculoză
secundară distructivă.**



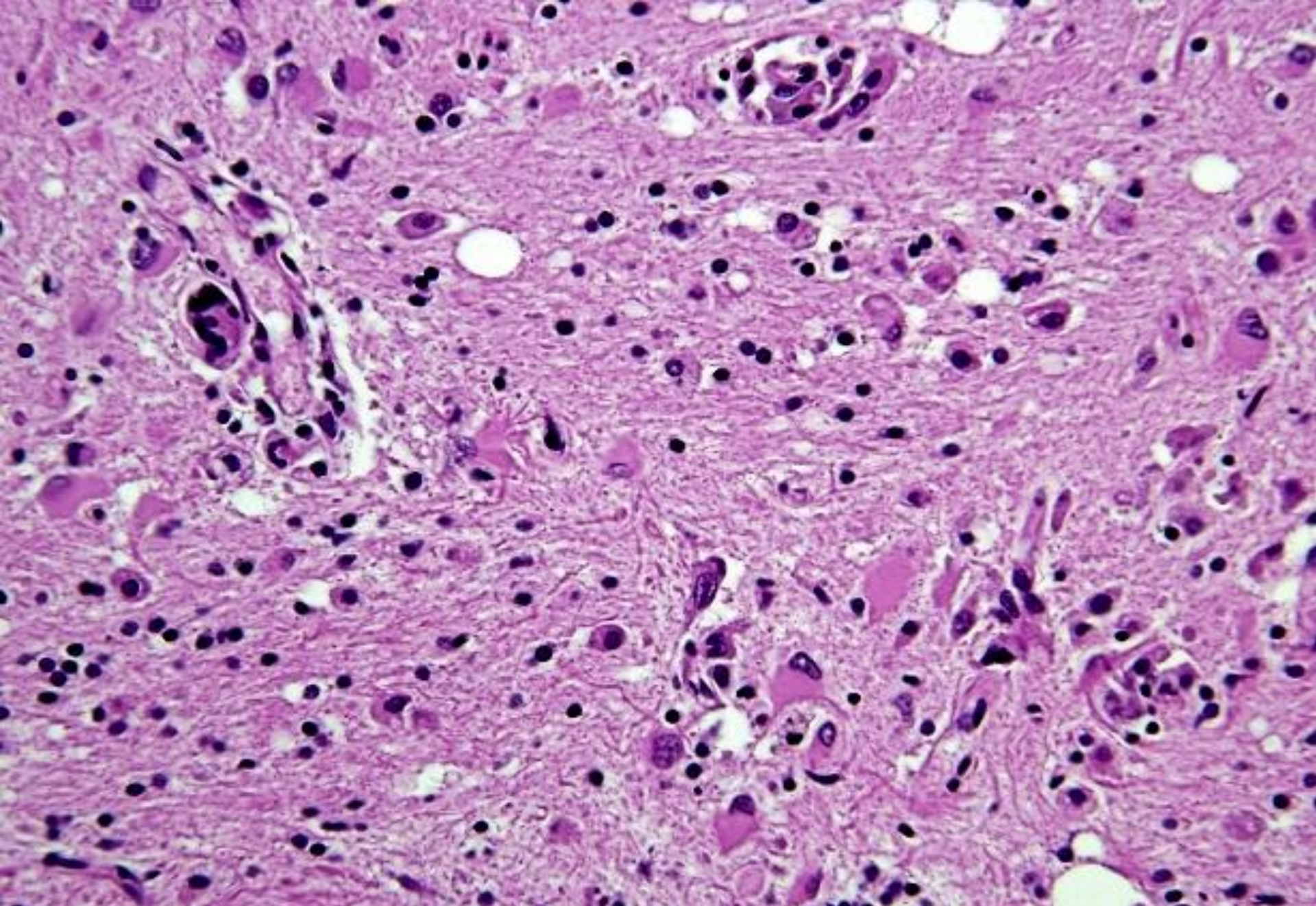
Tuberculoză secundară fibro-cavitară, peretele cavernei



Tuberculoză secundară fibro-cavitară.



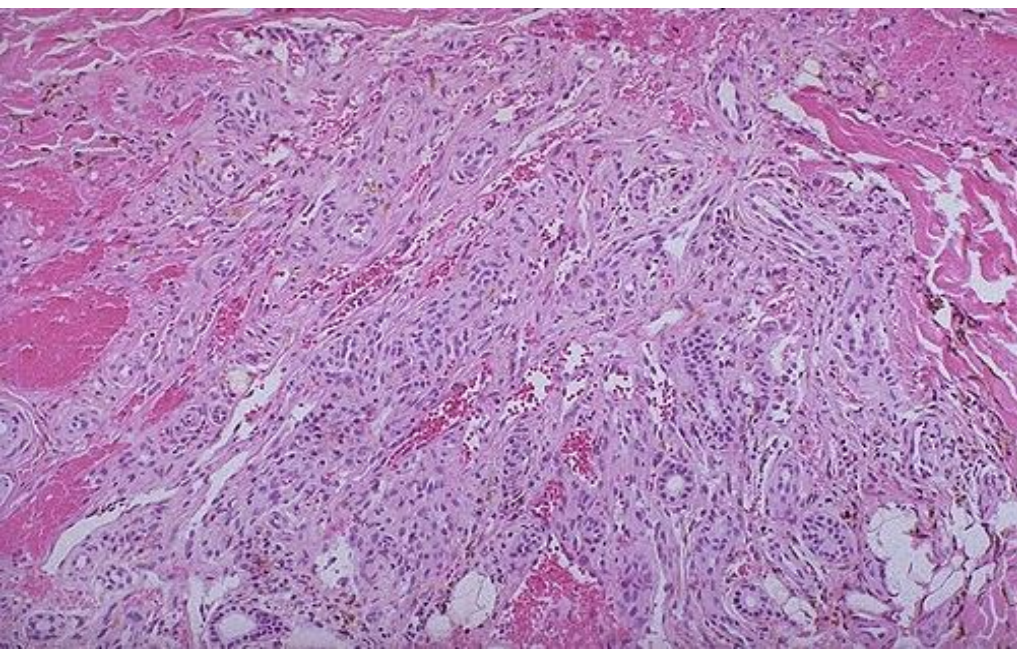
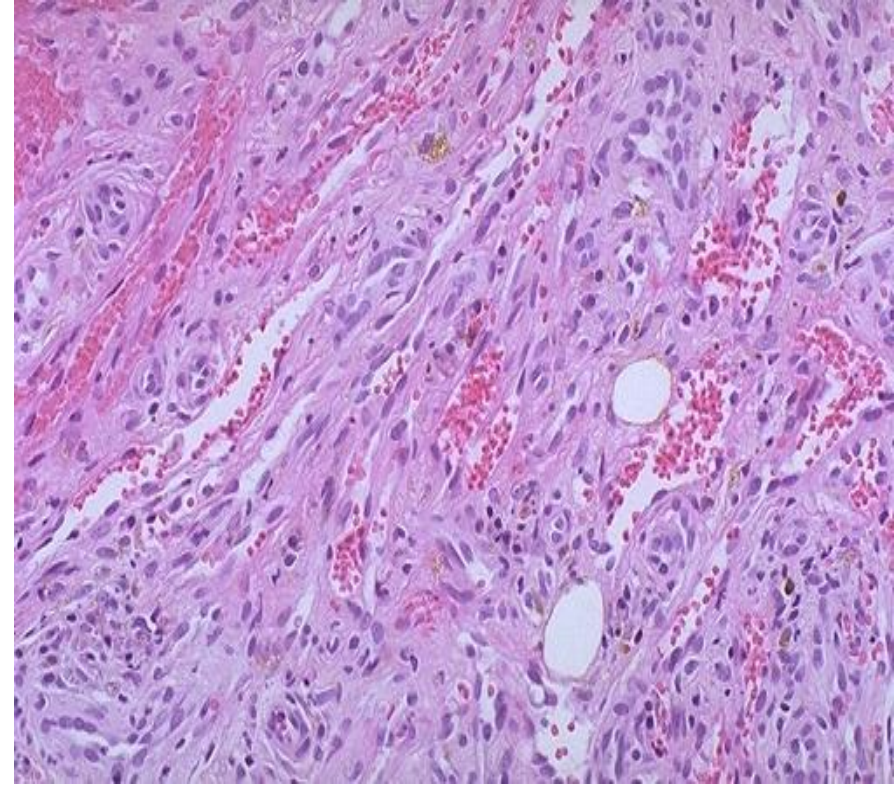
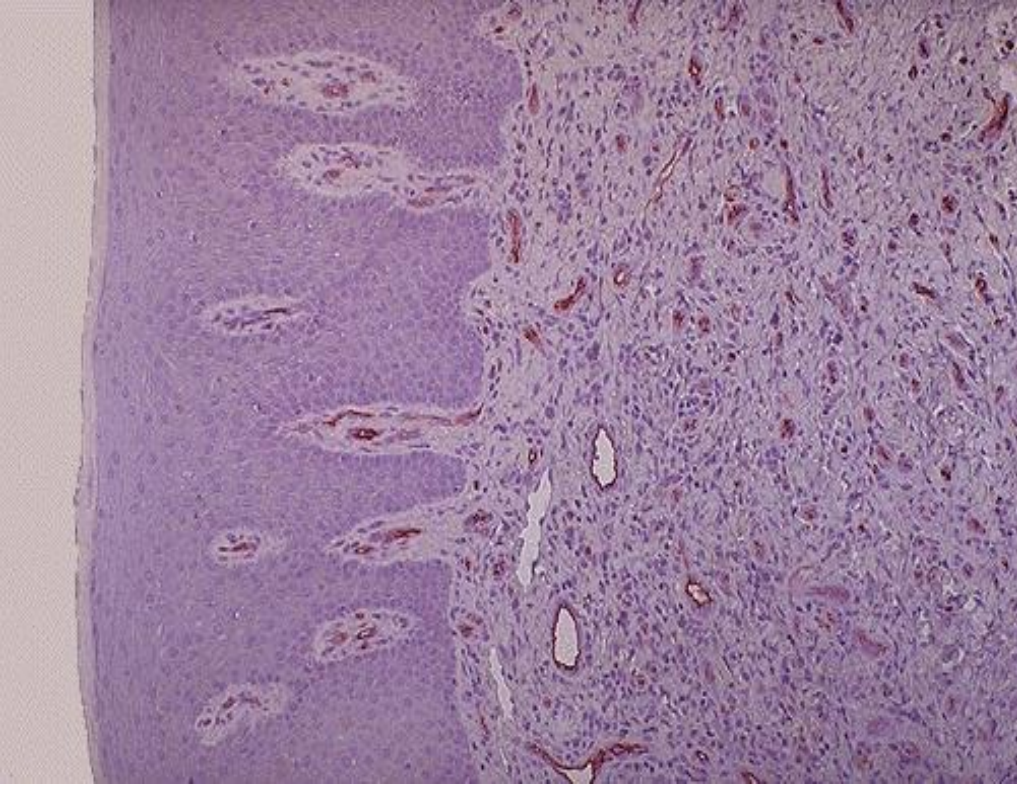
Tuberculoză pulmonară fibro-cavitară cu hemoragie.



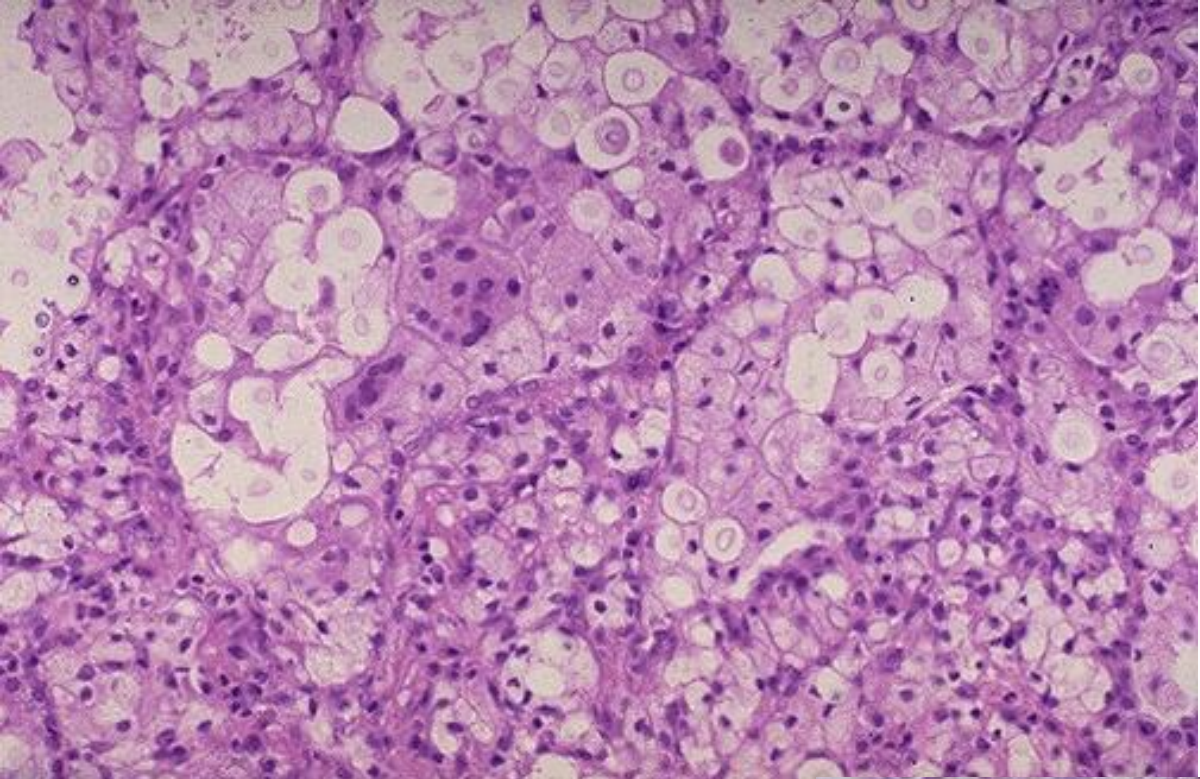
Encefalopatia HIV cu prezența celulelor gigante, rezultate din fuziunea macrofagelor infectate cu HIV.



Sarcom Kaposi (*piele, ficat, stomac*).



Sarcom Kaposi
(*structuri vasculare, hemoragii, celule stromale fusiforme*).



**Infecție
citomegalovirală
pulmonară.**



**Criptococoza
pulmonară.**

