



Tulburările circulației sanguine și limfatice

Tema: Tulburările circulației sanguine și limfatice.

I. Micropreparate:

№ 10. Hiperemia venoasă (congestia) cronică a ficatului (*ficat muscad*). (*Colorație H-E*). Indicații:

1. Vena centrolobulară dilatată, hiperemiată.
2. Porțiunile centrale ale capilarelor sinusoidale dilatate, hiperemiate.
3. Cordoane hepatice atrofiate din centrul lobulului.
4. Cordoane hepatice și capilarele sinusoidale nemodificate de la periferia lobulului.

№ 1. Infarct hemoragic pulmonar. (*Colorație H-E*). Indicații:

1. Zona infarctului:
 - a. septuri interalveolare necrotizate;
 - b. aglomerări de eritrocite hemolizate în lumenul alveolar;
2. Zona de demarcare (infiltrație leucocitară).
3. Țesutul pulmonar adiacent cu stază venoasă și edem.

№ 4. Tromb roșu recent în venă. (*Colorație H-E*). Indicații:

1. Peretele venei.
2. Tromb în lumenul vasului:
 - a. filamente de fibrină;
 - b. eritrocite hemolizate.

№ 140. Embolia celulară (canceroasă) a vaselor limfatice pulmonare. (*Colorație H-E*). Indicații:

1. Vas limfatic dilatat.
2. Embol celular (celule canceroase) în lumenul vasului limfatic.
3. Venă.
4. Alveole pulmonare.

II. Macropreparate:

№ 71. Ficat muscad.

№ 38. Infarct hemoragic pulmonar.

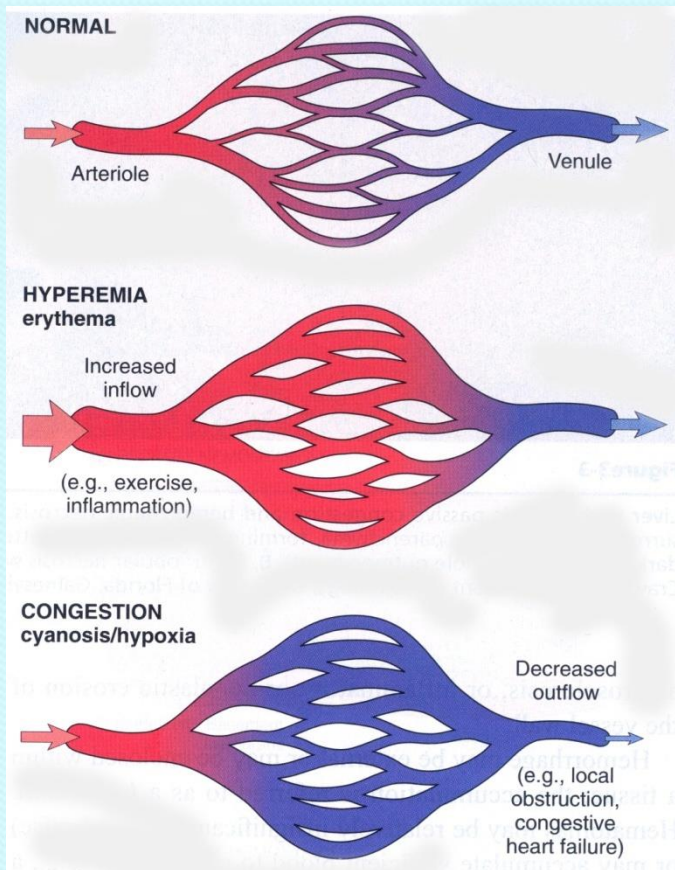
№ 121. Ictus hemoragic cerebral.

№ 3. Tromboza parietală a aortei.

№ 37. Tromboembolia arterei pulmonare..

Hiperemia arterială (hiperemia) & Hiperemia venoasă (congestia)

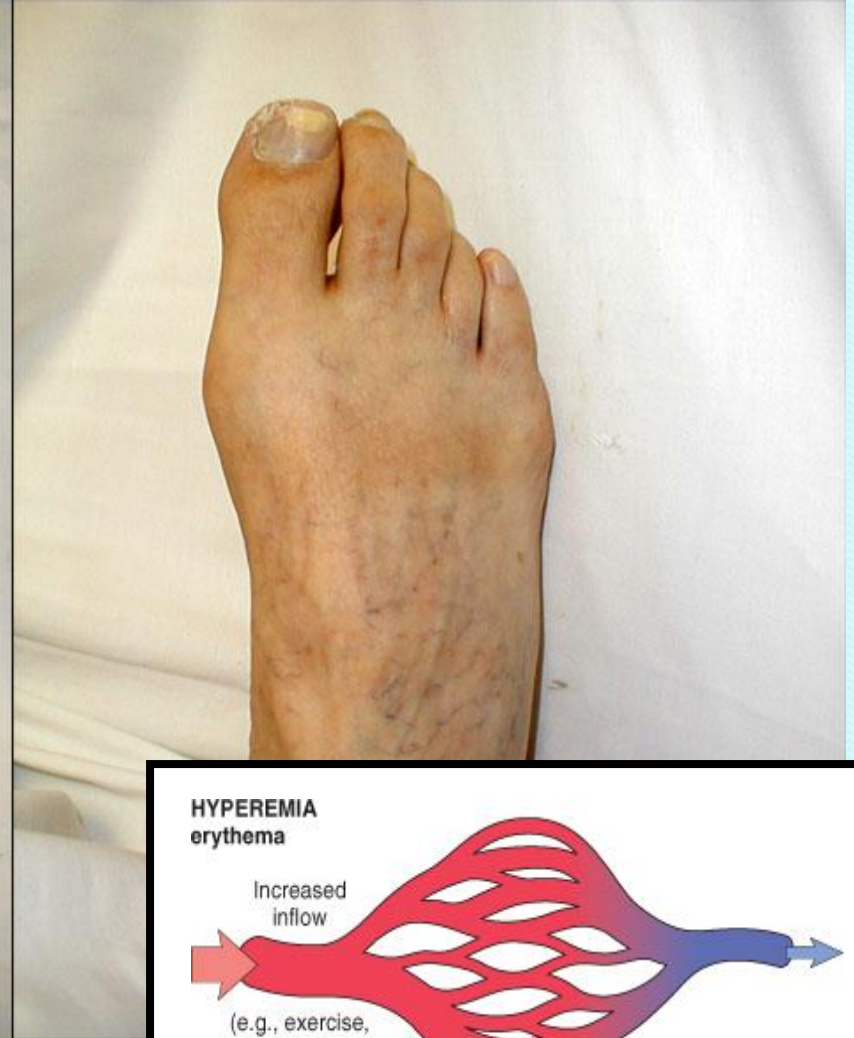
Ambele procese reprezintă creșterea presiunii și volumului de sânge într-un organ sau țesut.



Hiperemia arterială (hiperemia): proces activ; macroscopic se manifestă prin culoare roșie, temperatură crescută.

Hiperemia venoasă (congestia): proces pasiv; macroscopic se manifestă prin culoare roșie închis violacee (cianotică), temperatura scăzută.

Hiperemia arterială

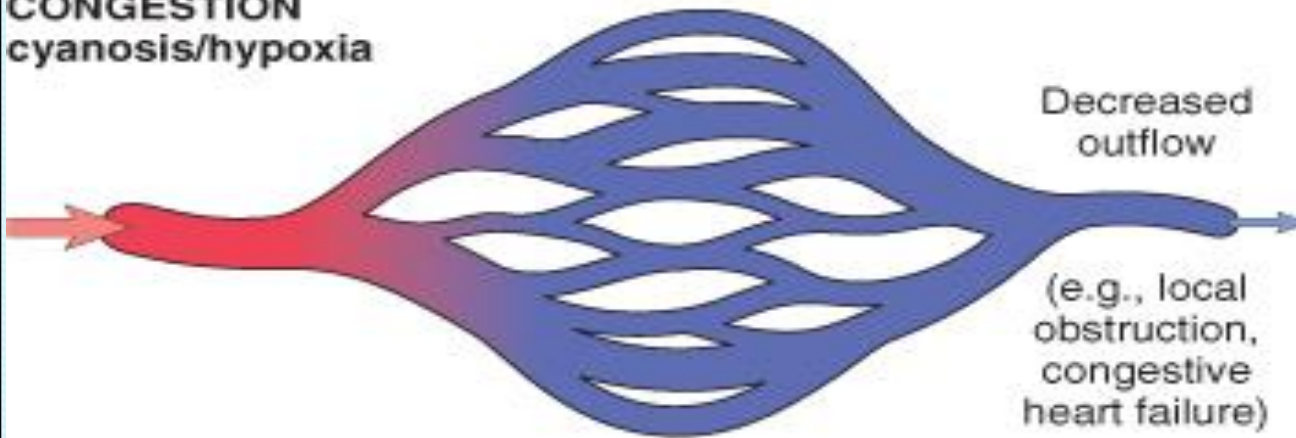


HYPEREMIA
erythema

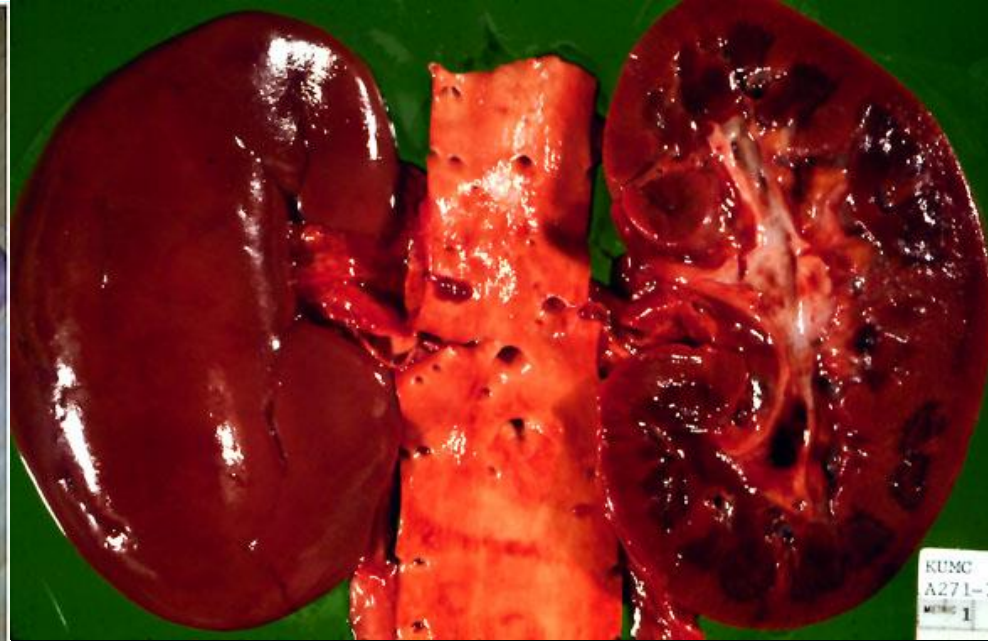


Hiperemie venoasă (congestie)

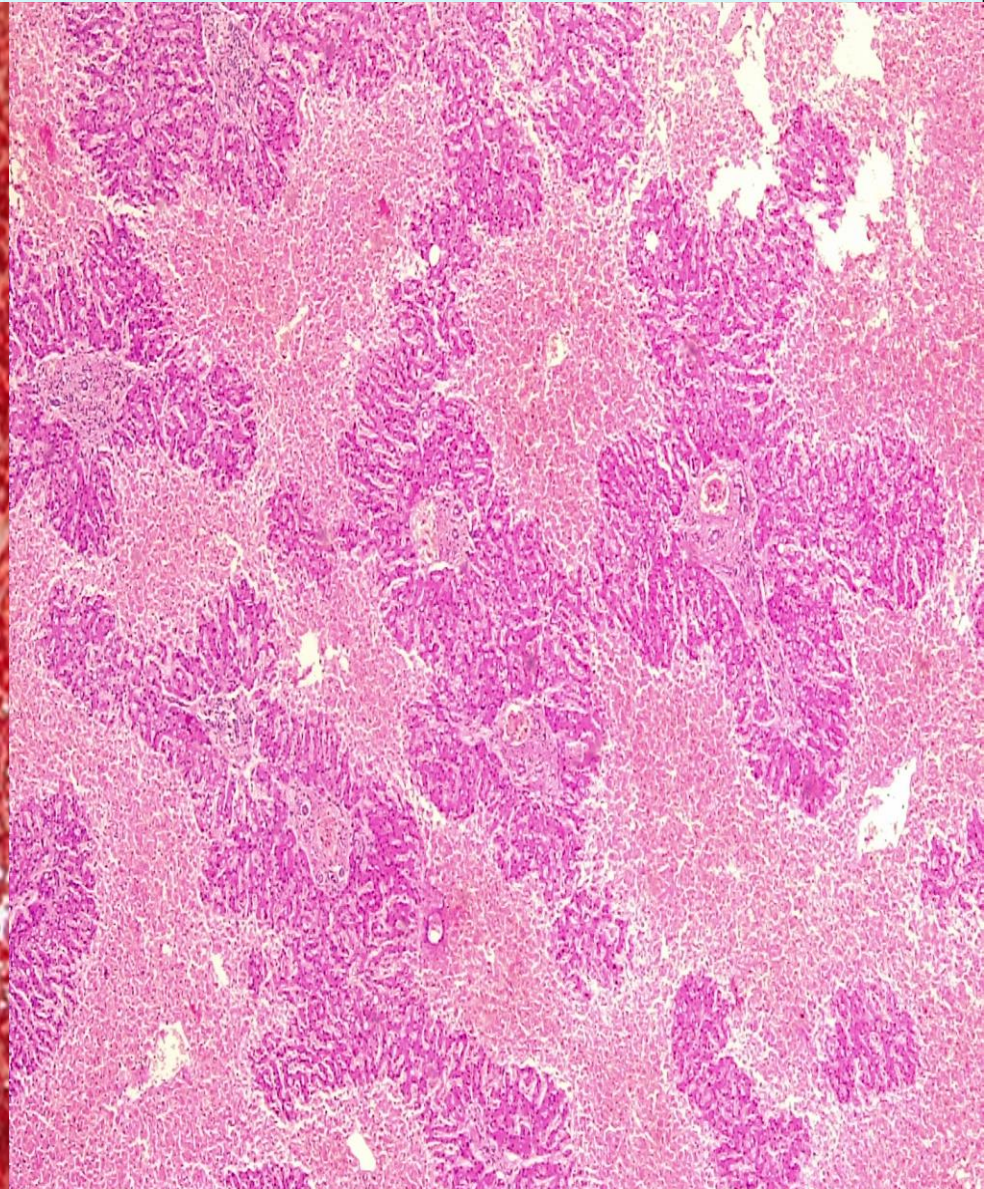
CONGESTION
cyanosis/hypoxia



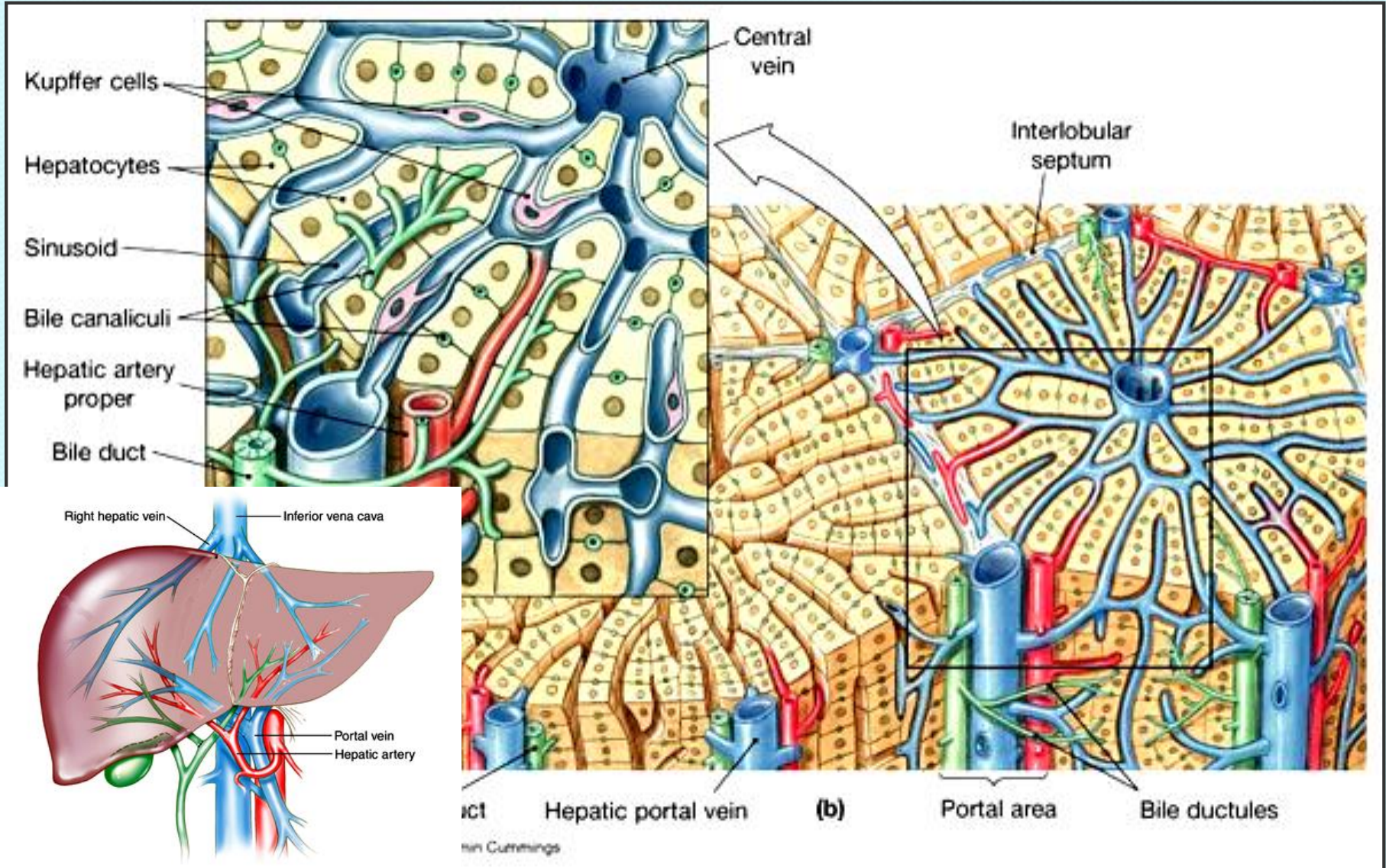
© Elsevier 2005

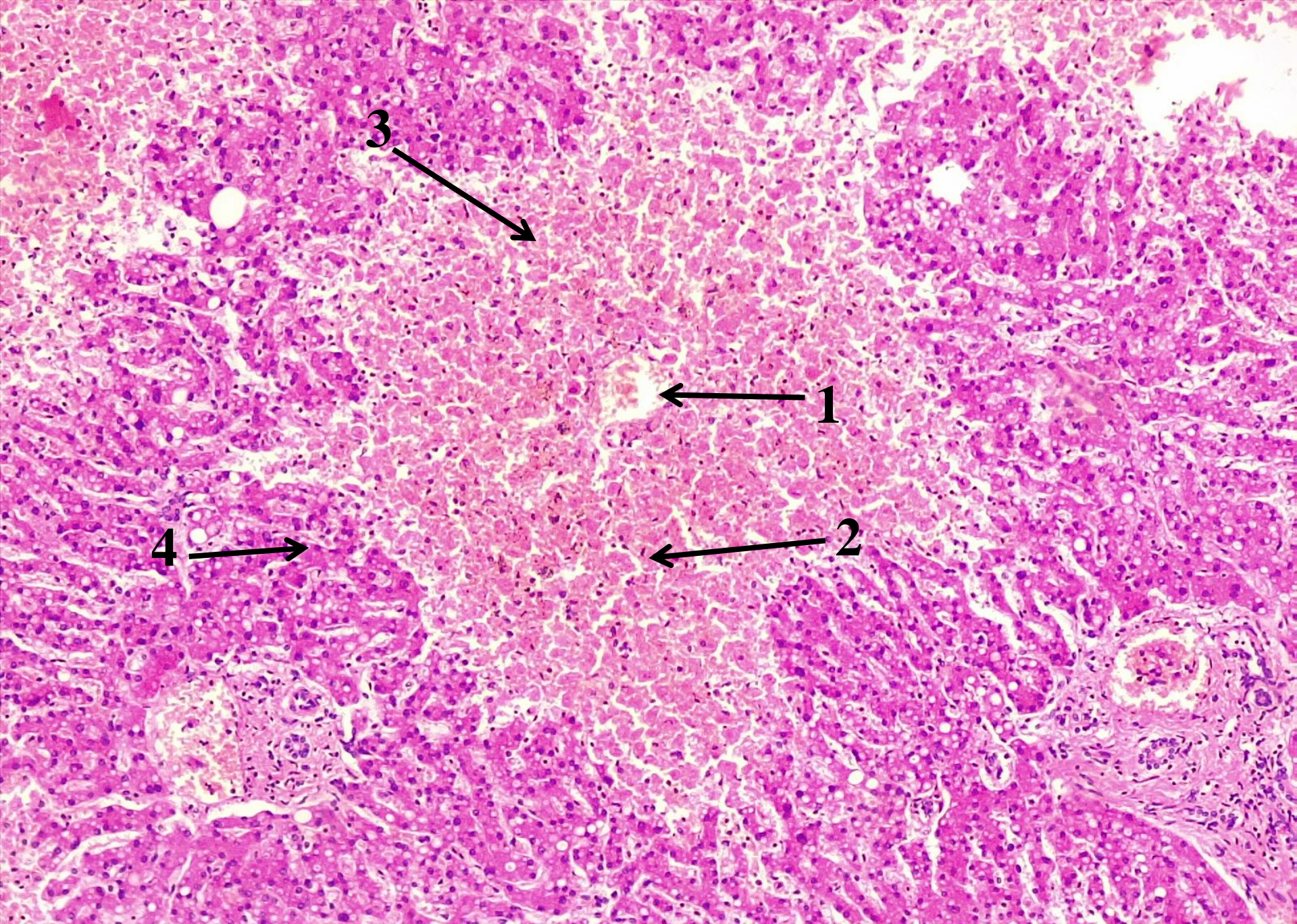


Congestia cronică a ficatului

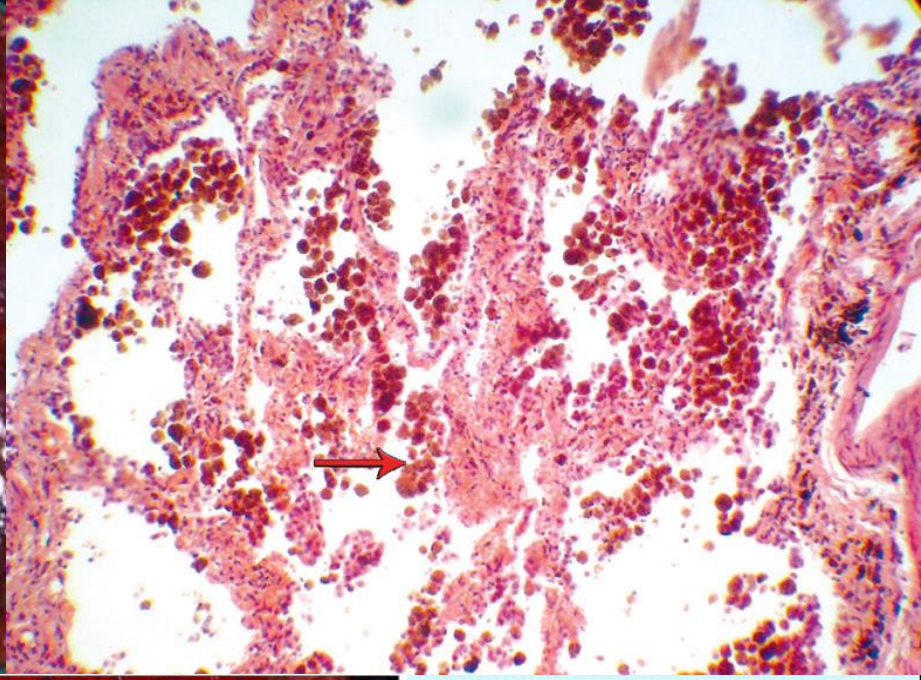
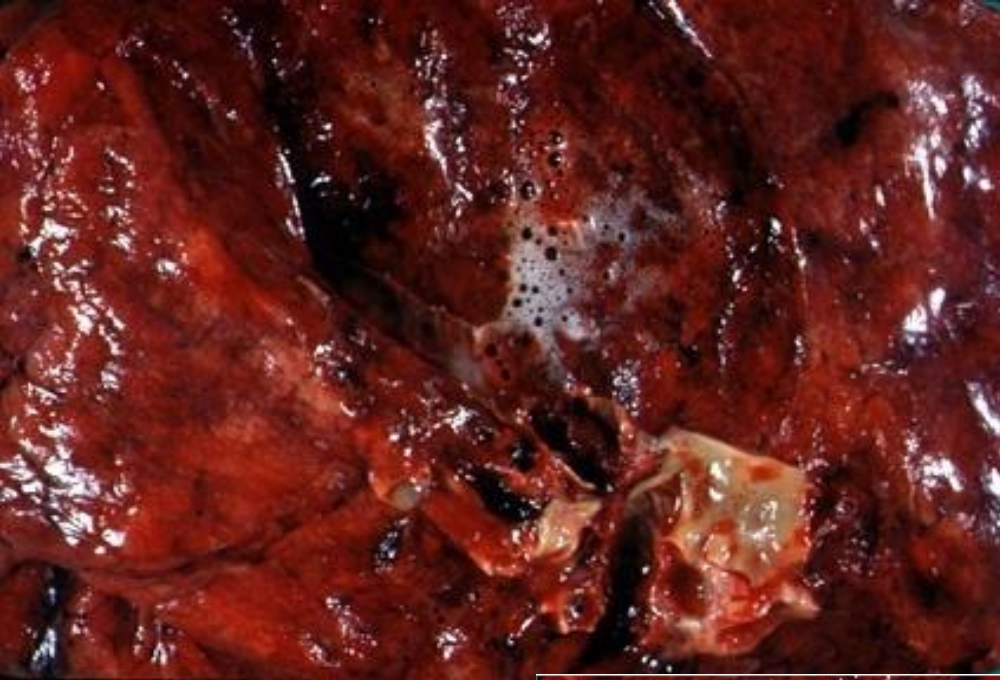


Circulația sanguină hepatică





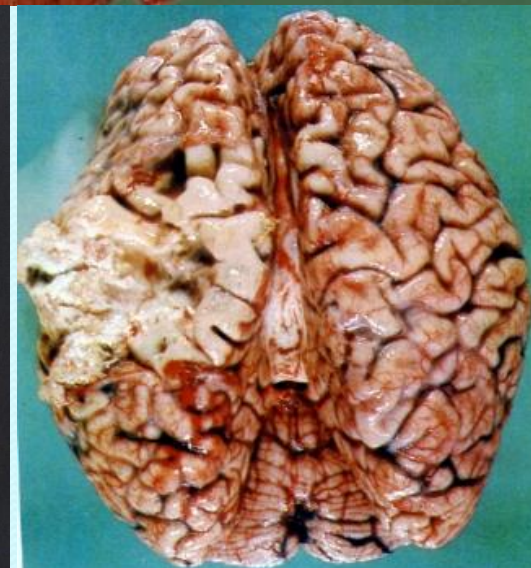
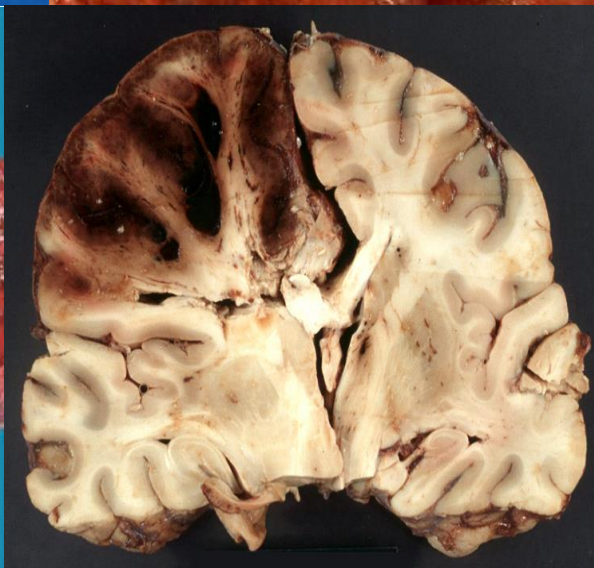
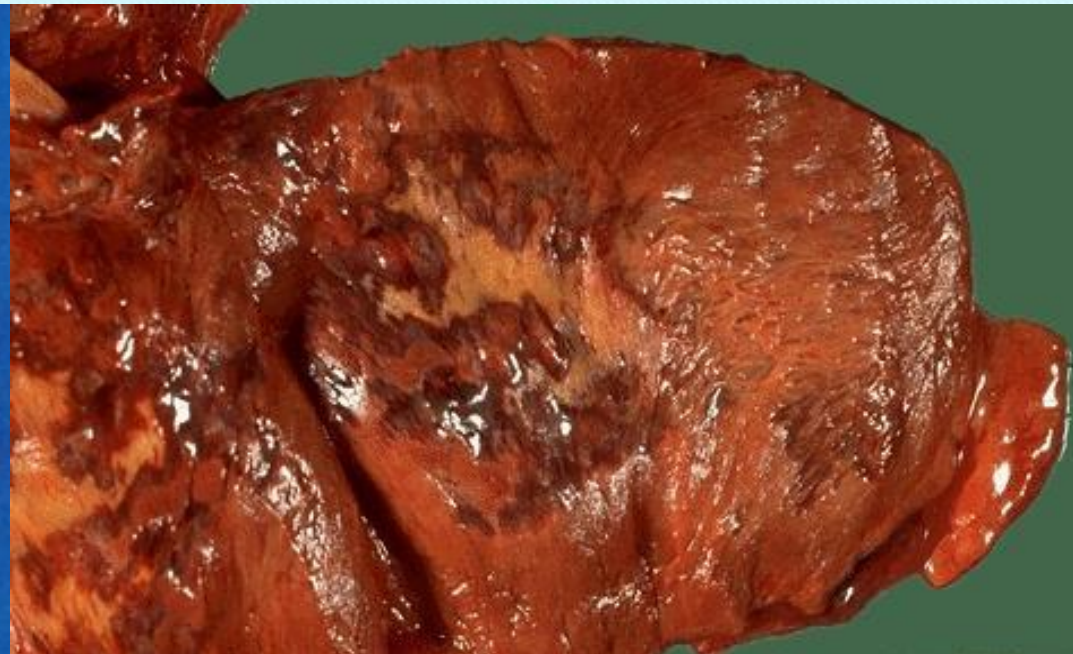
№ 10. Hiperemia venoasă (congestia) cronică a ficatului (*ficat muscad*). (Colorație H-E.).



Heavy lungs
Firm and rusty or brown due to accumulation of hemosiderin

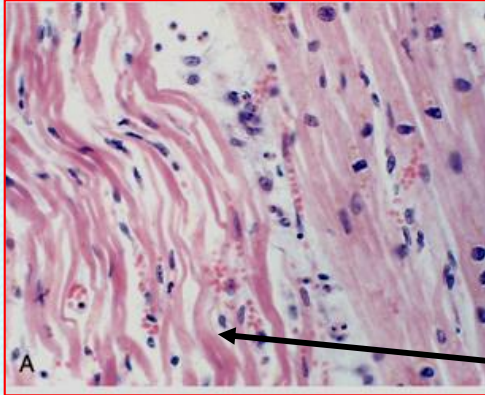
Hiperemia venoasă (congestia) cronică a plămânului
(indurația brună a plămânului)

INFARCTUL



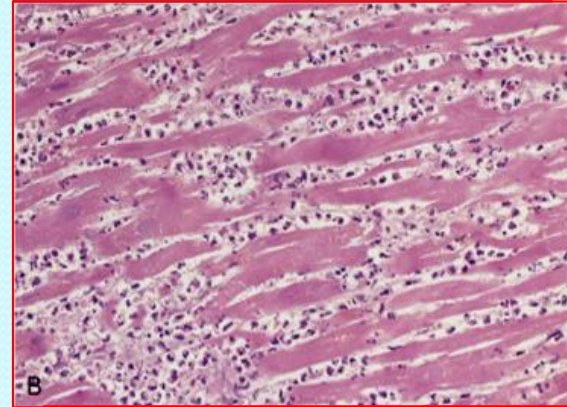
Infarct miocardic acut

One-day-old infarct

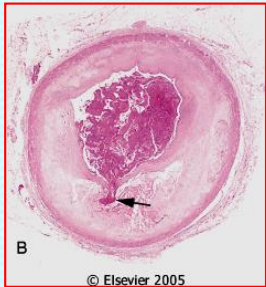


wavy fibers

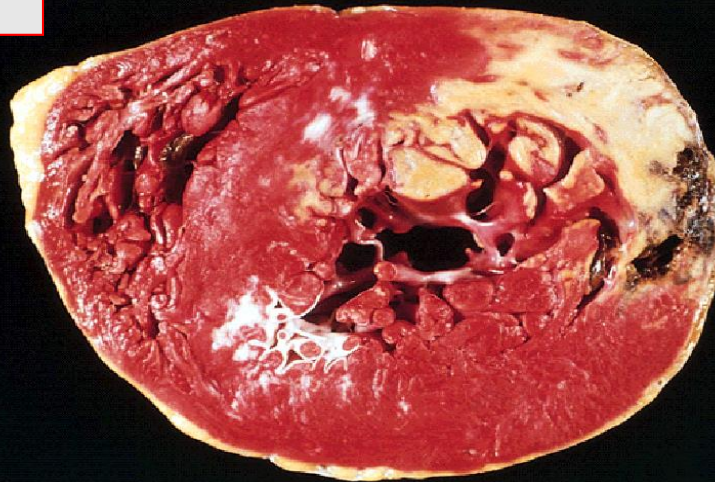
Up to 3 days duration



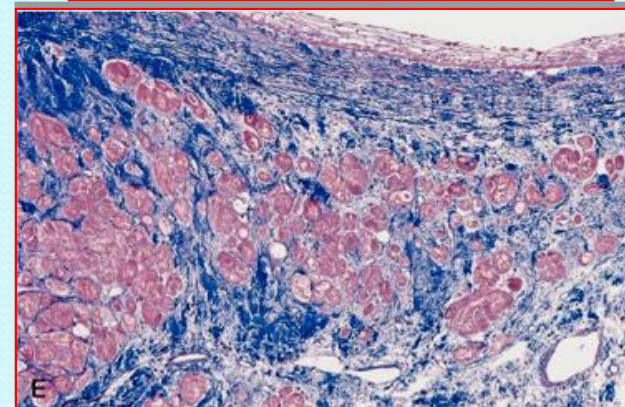
Neutrophilic infiltrate



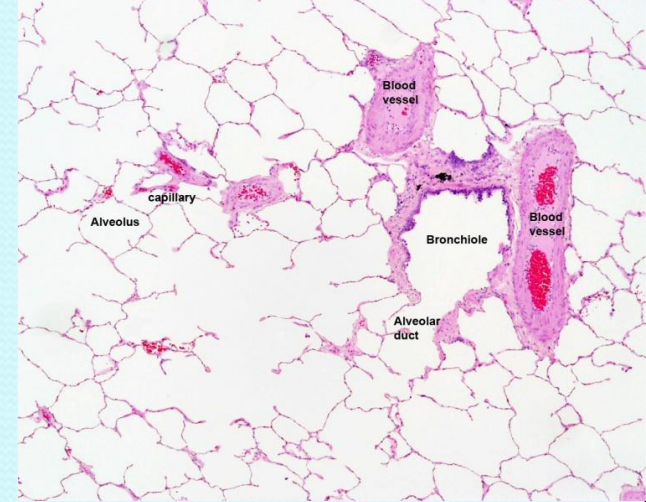
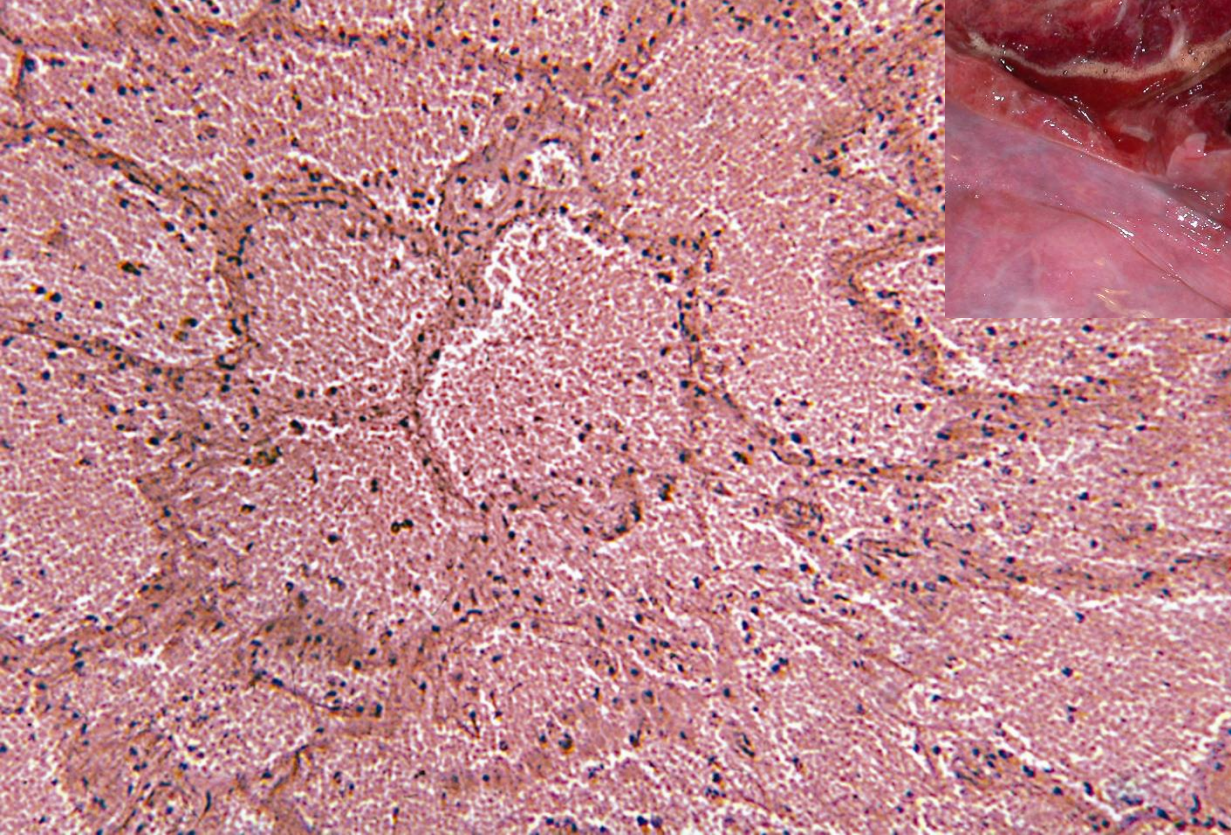
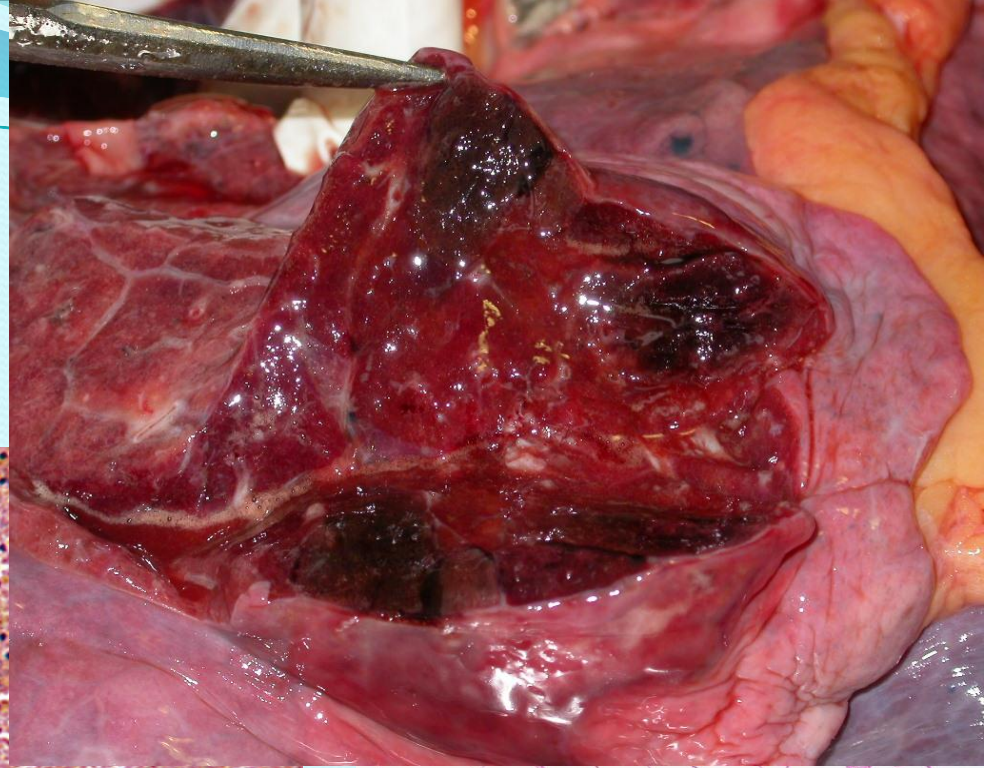
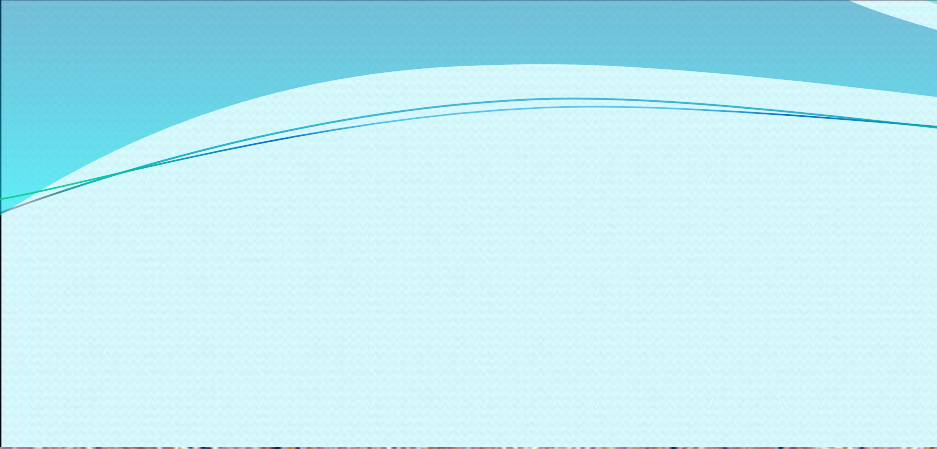
coagulative necrosis



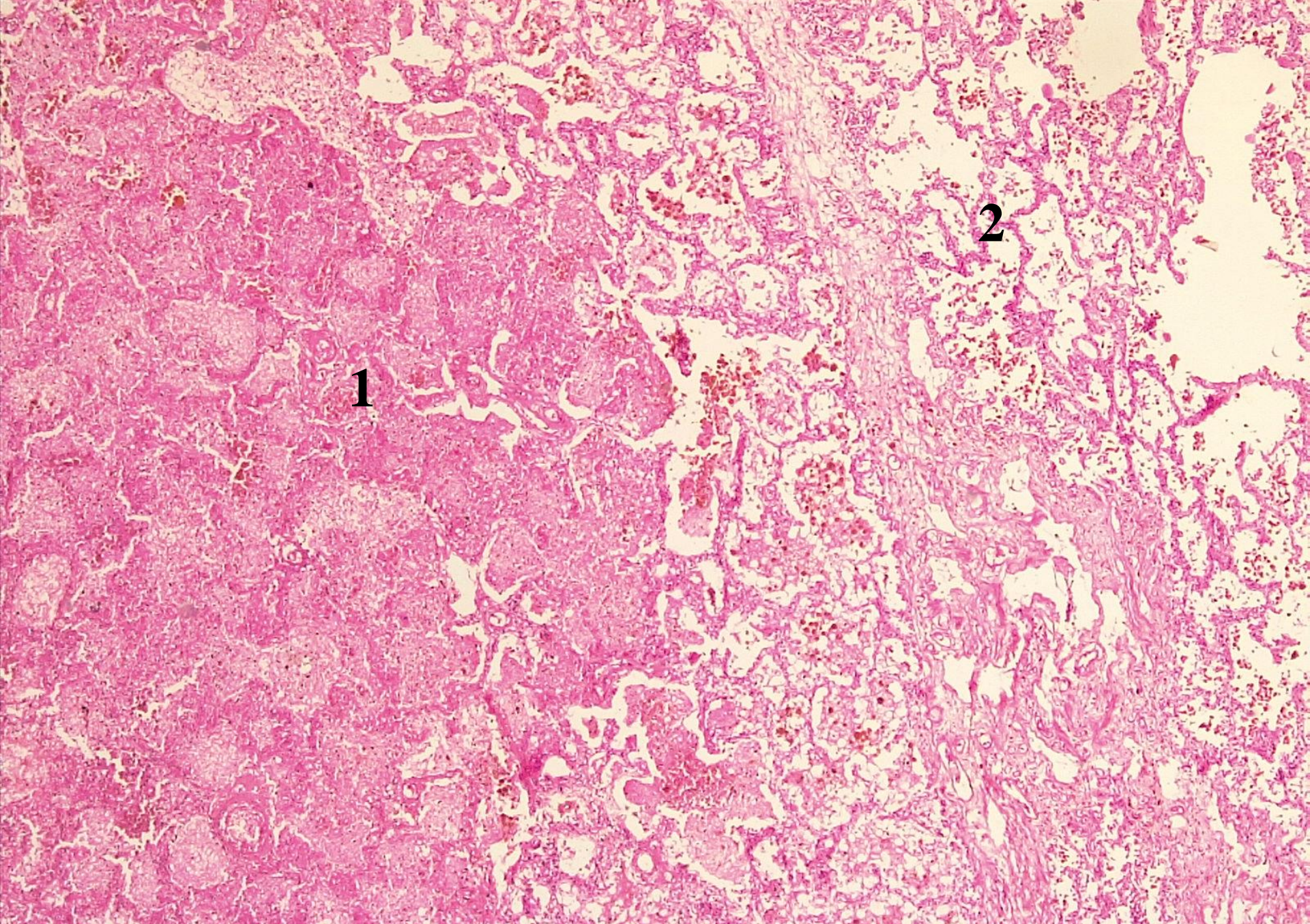
>3 weeks



Scar

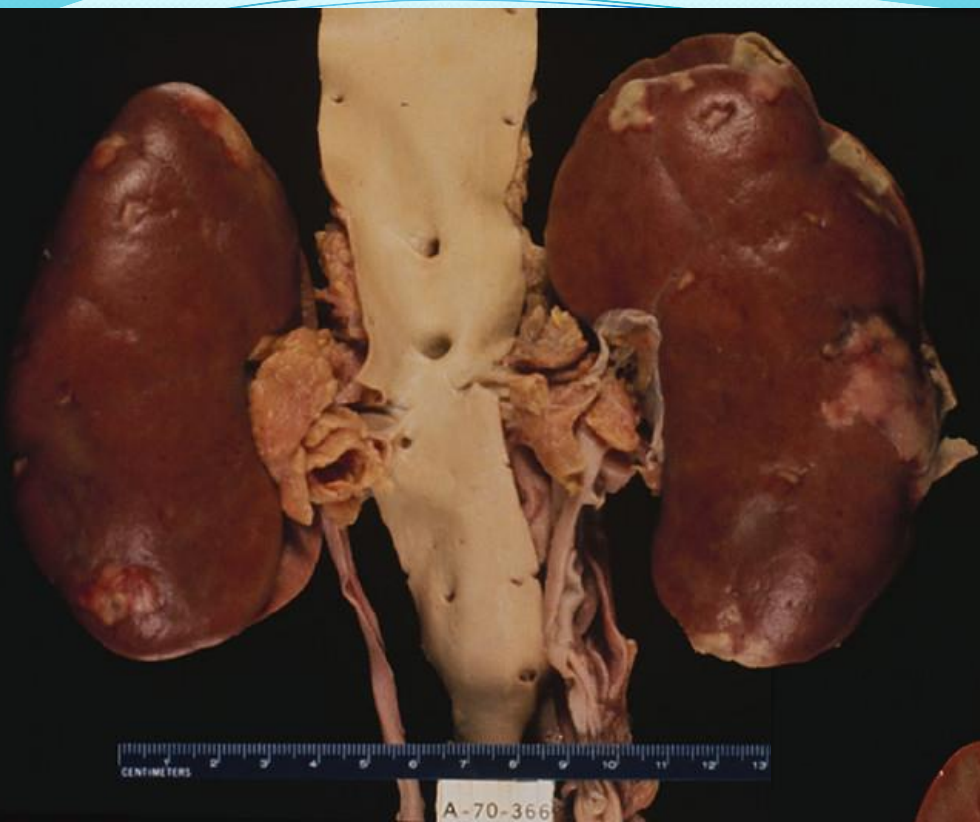


Infarct pulmonar



№ 1. Infarct hemoragic pulmonar. (Colorație H-E).

Infarct renal



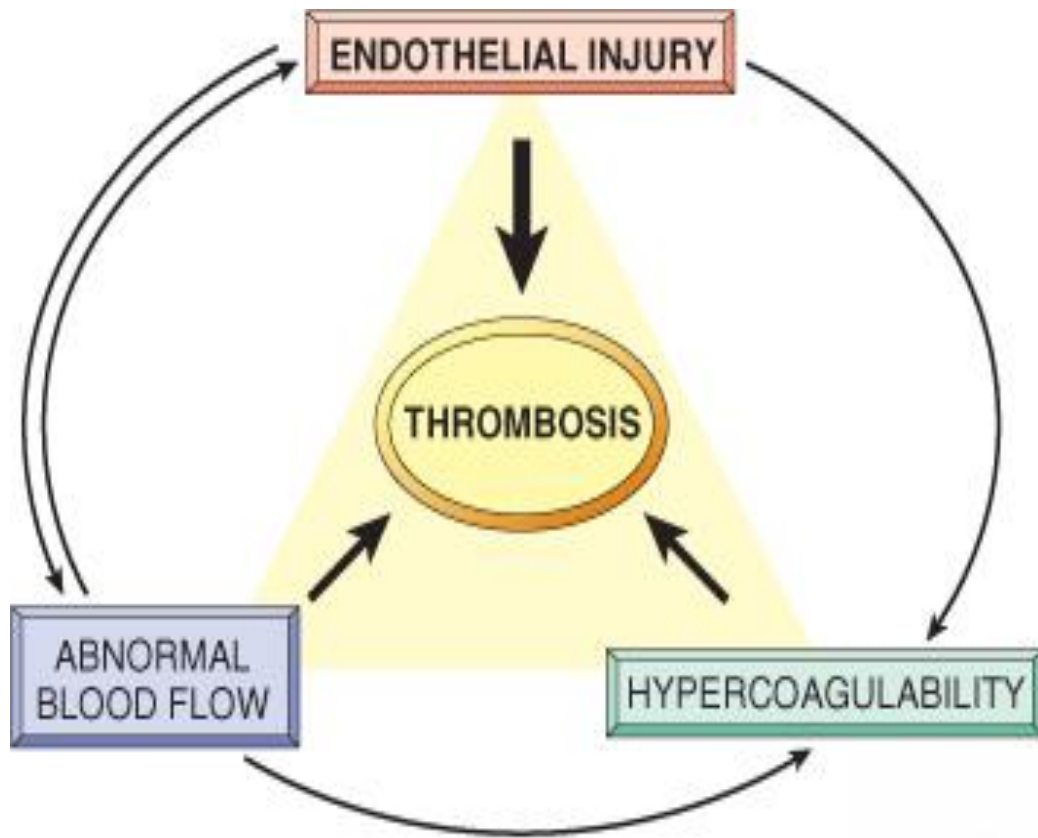
CENTIMETERS

A-70-366

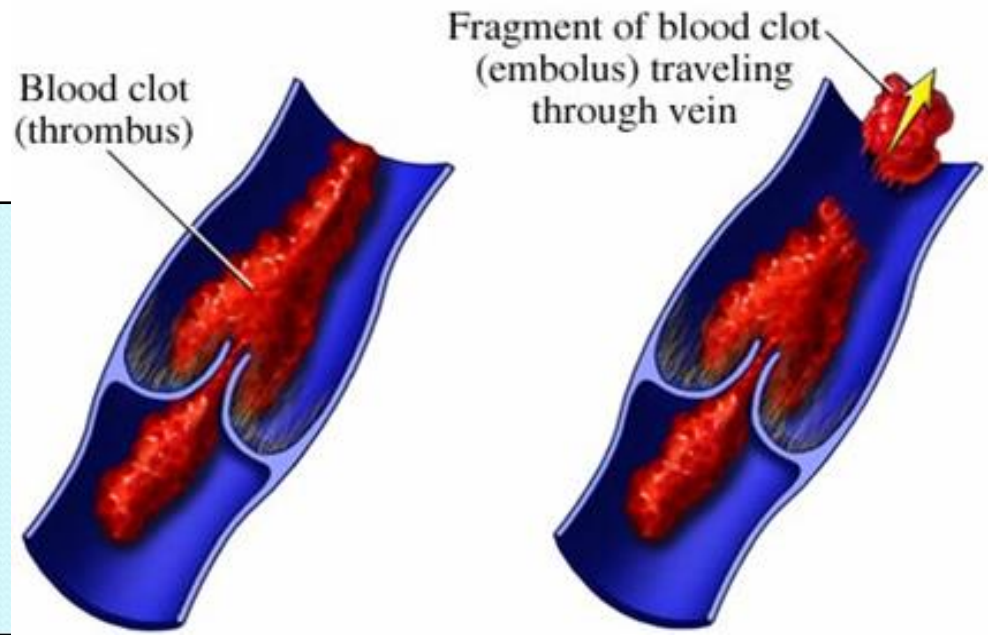


CENTIMETERS

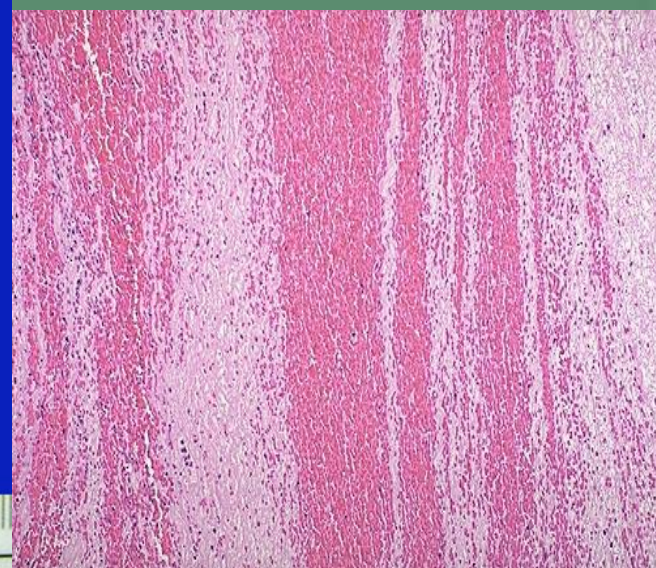
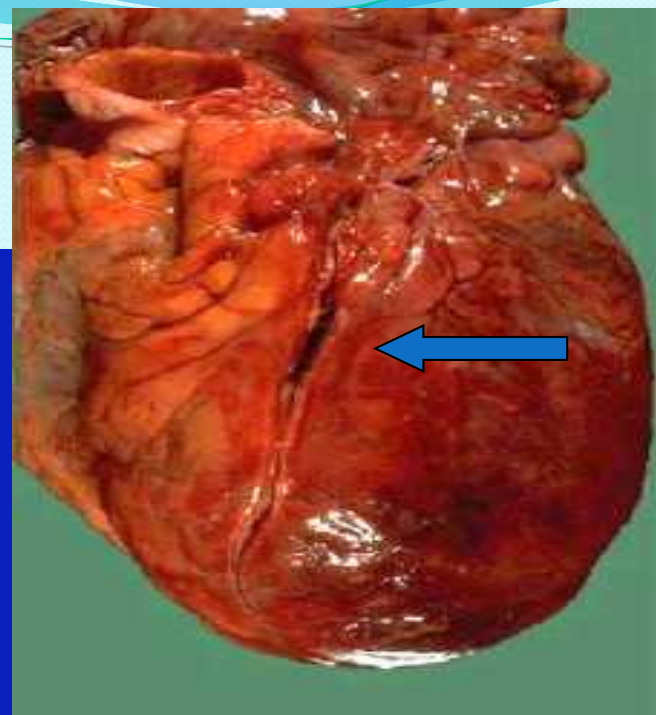
A-70-366

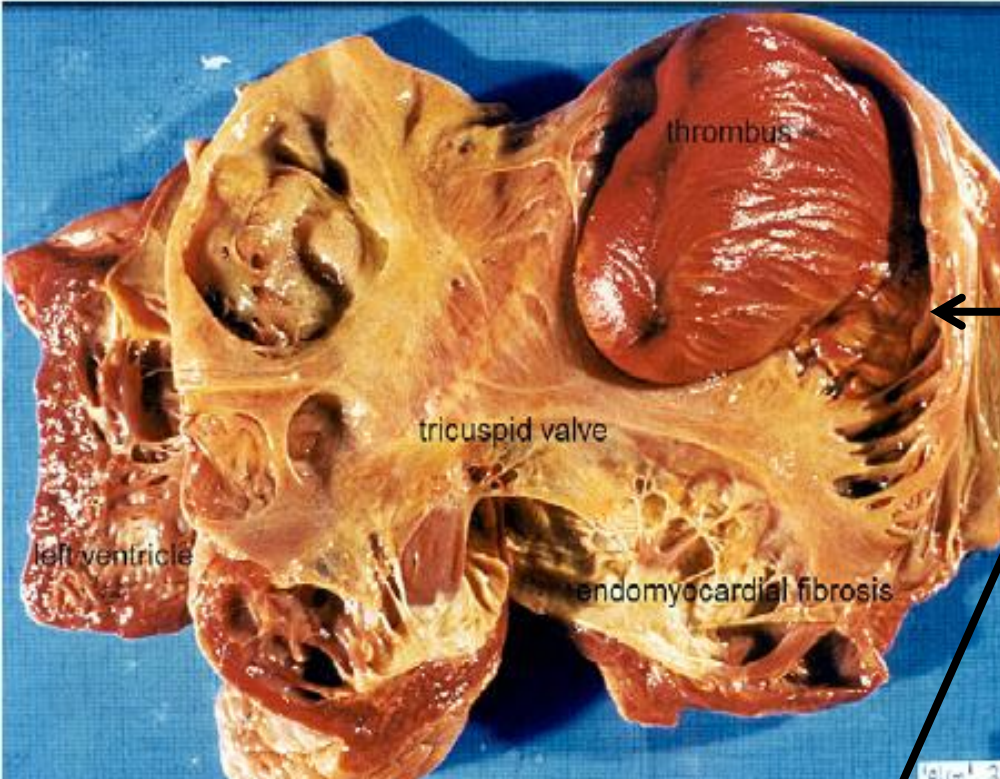


Triada Virchow în tromboză.



Tromboză arterială

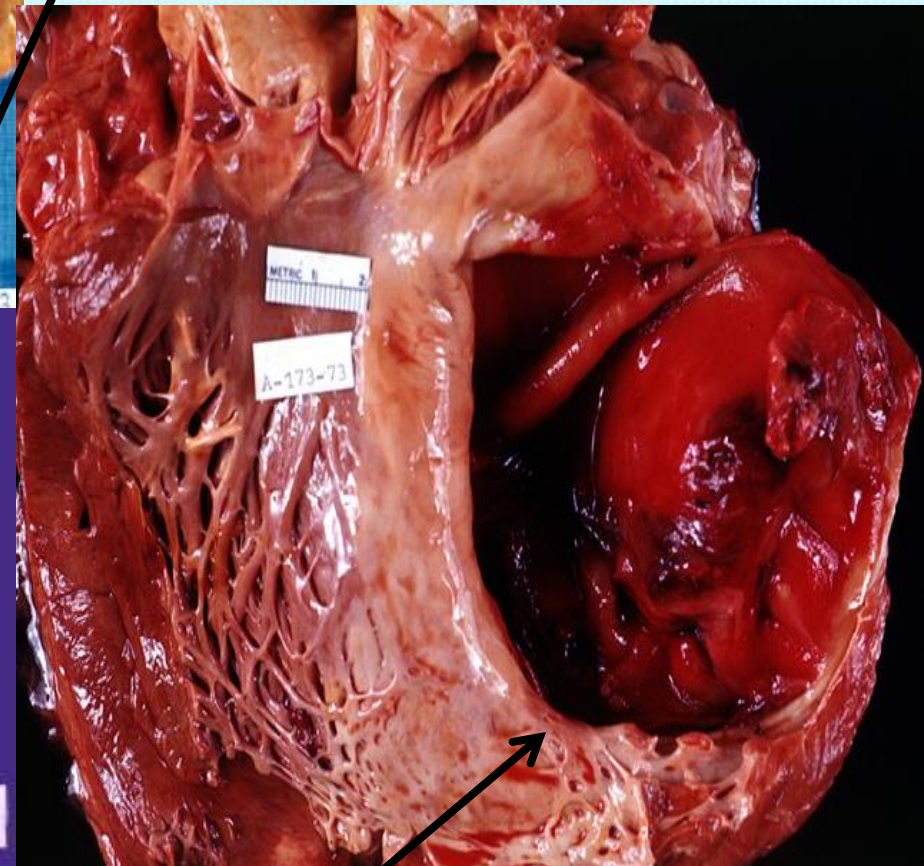


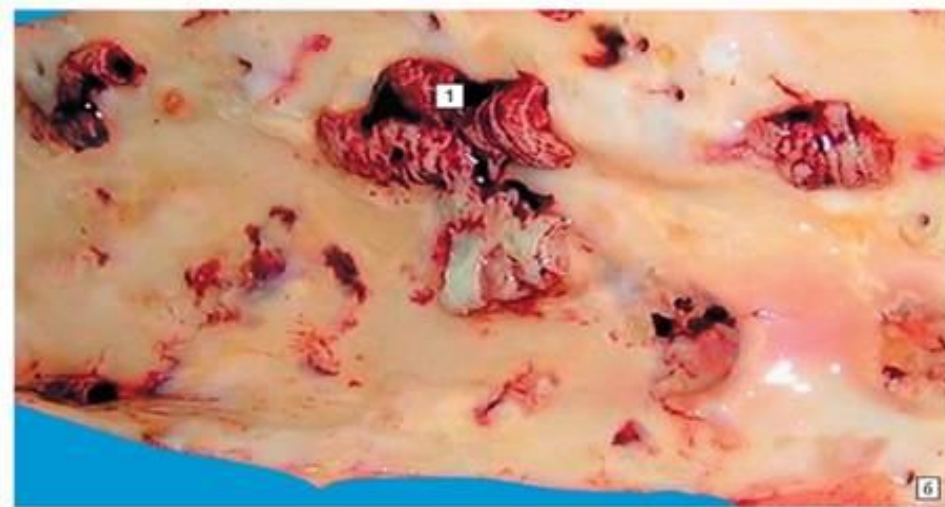


Tromb sferic în atriu drept.



Anevrism cardiac cronic cu tromboză.



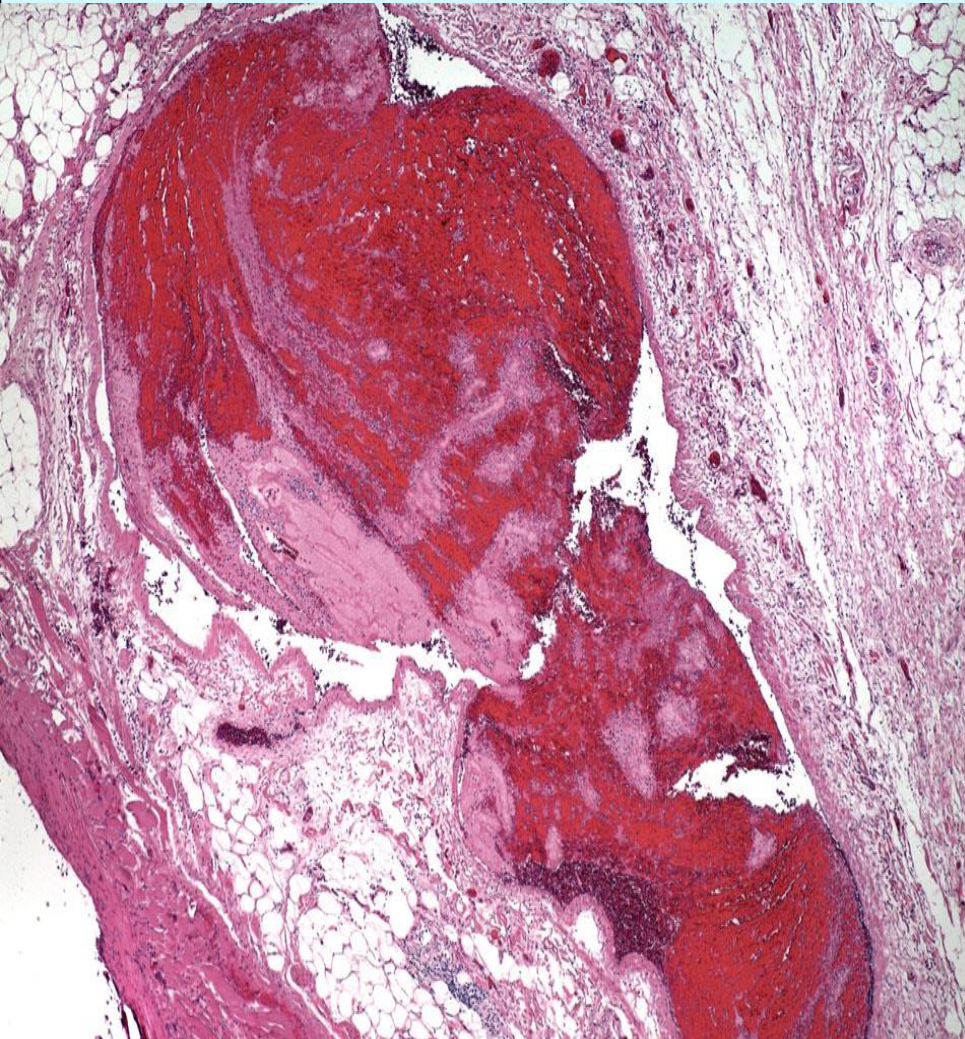


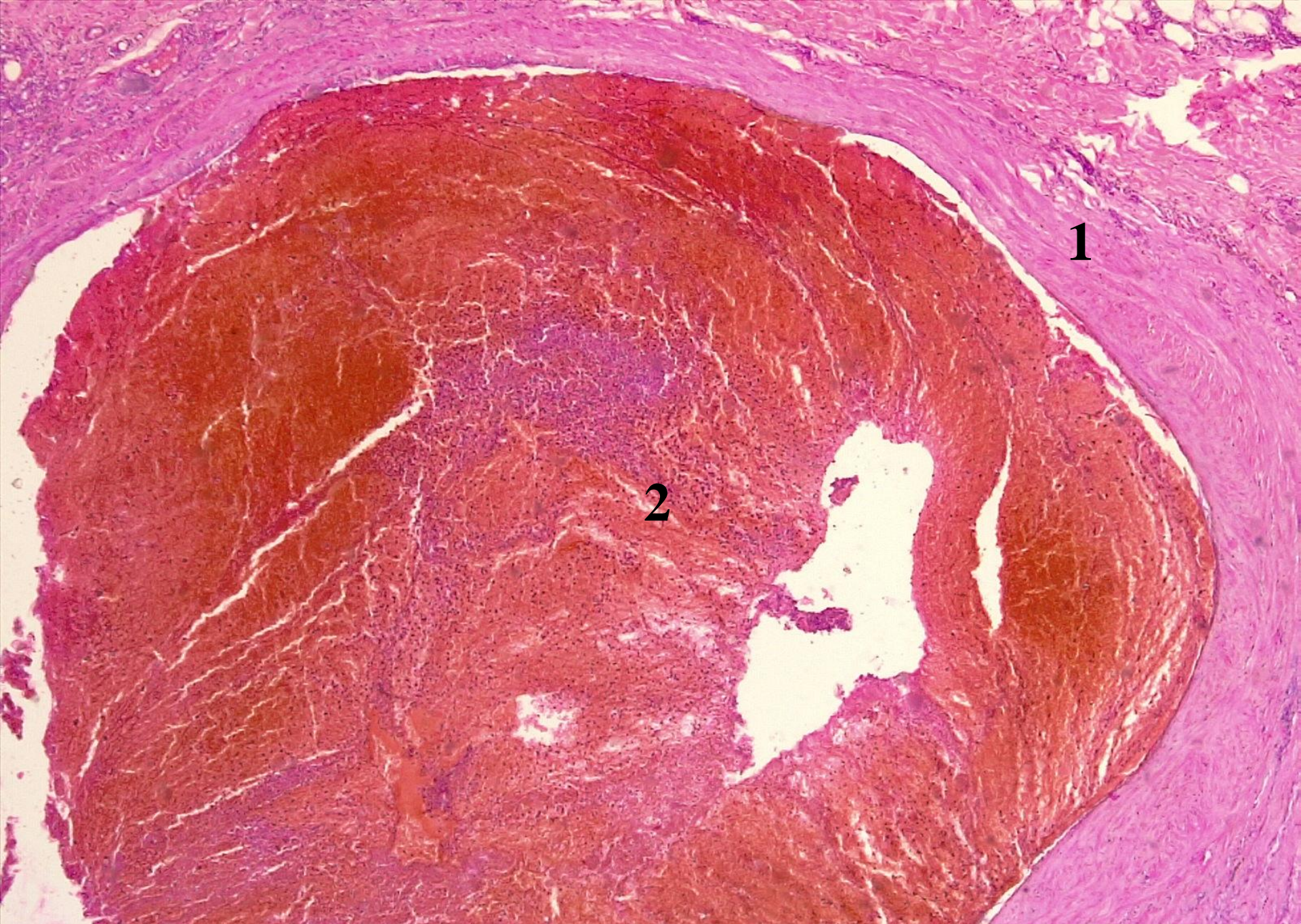
Trombi parietali în aorta abdominală în ateroscleroză.



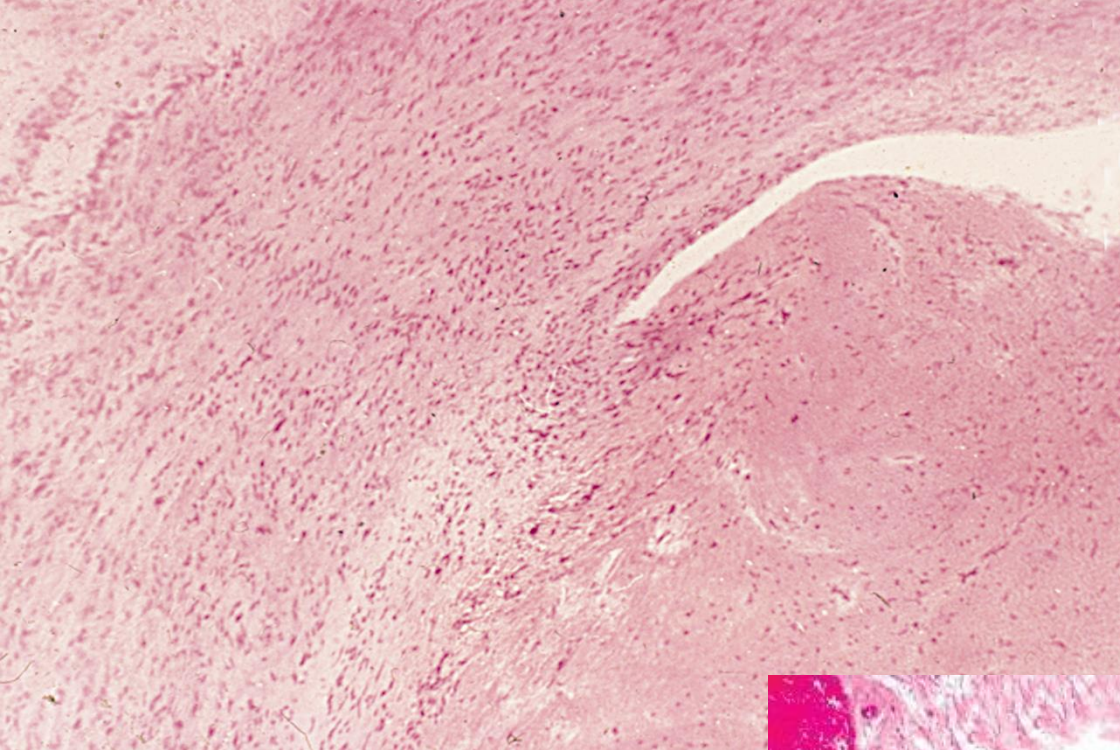
Tromb parietal în vena iliacă

Tromboza venoasă profundă a membrelor inferioare

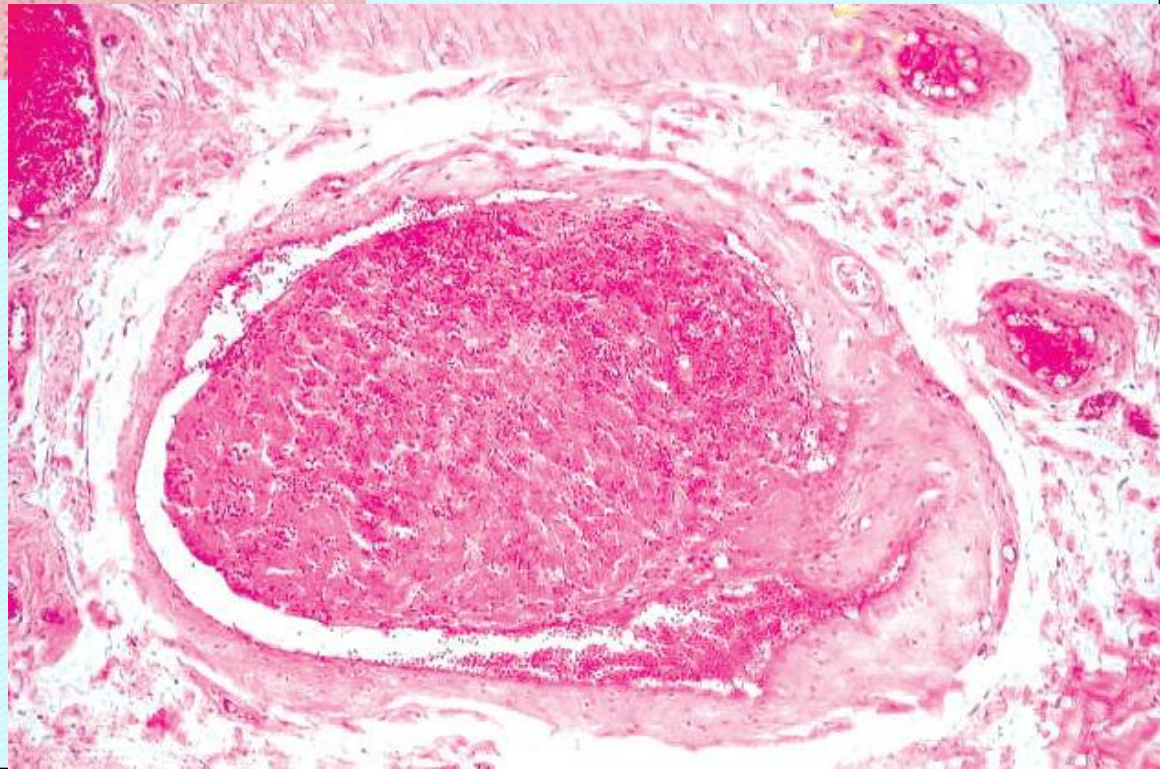




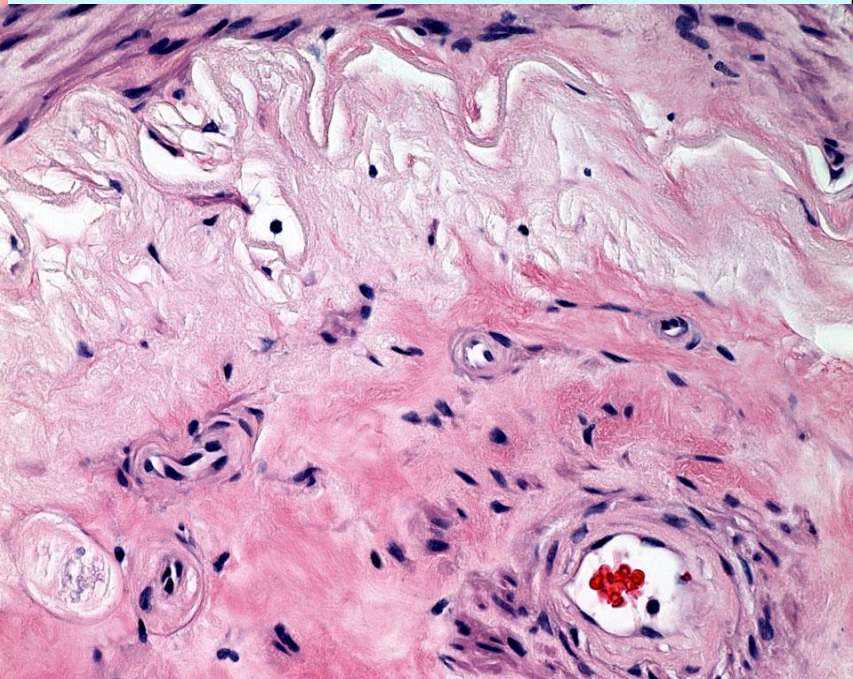
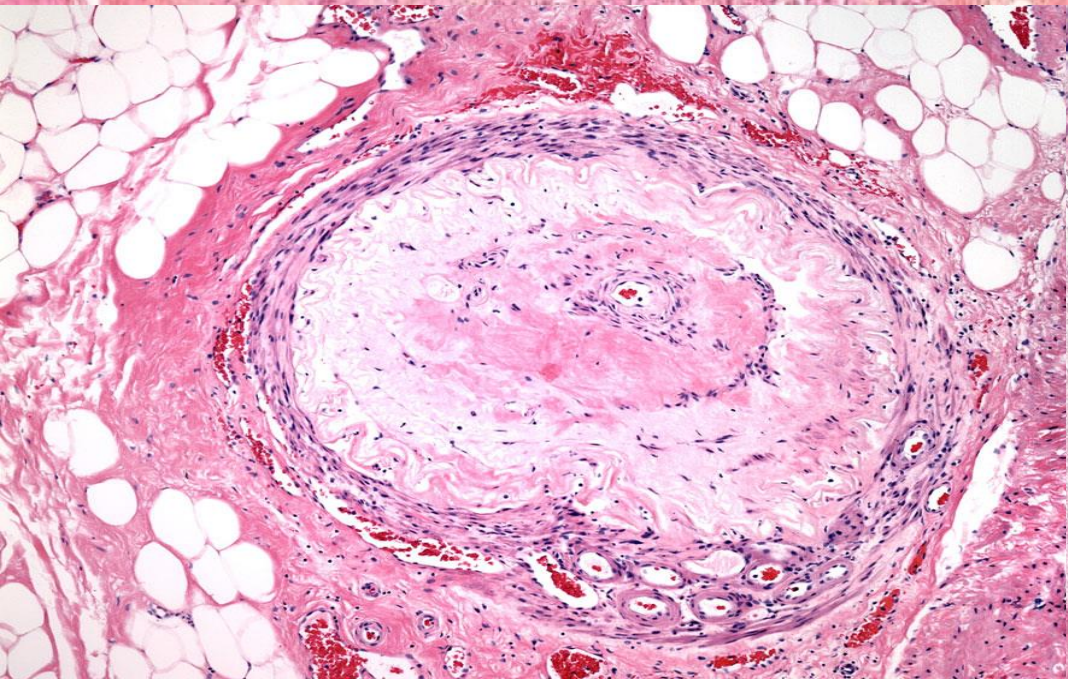
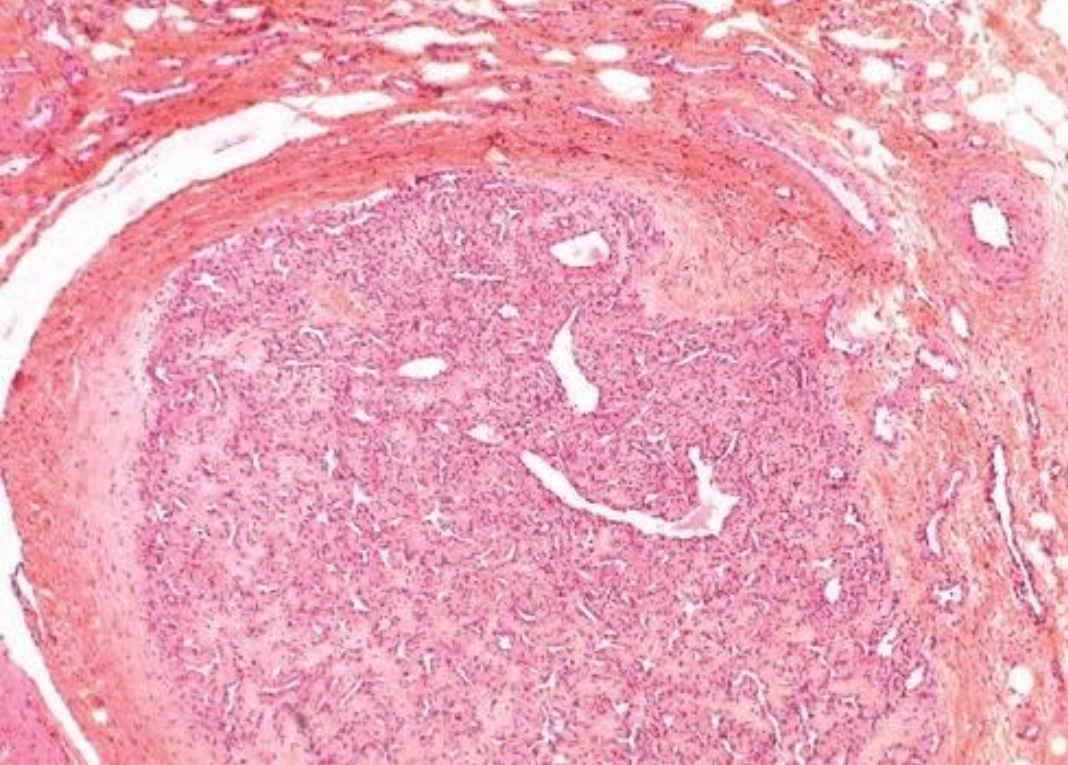
№ 4. Tromb roșu recent în venă. (Colorație H-E.).



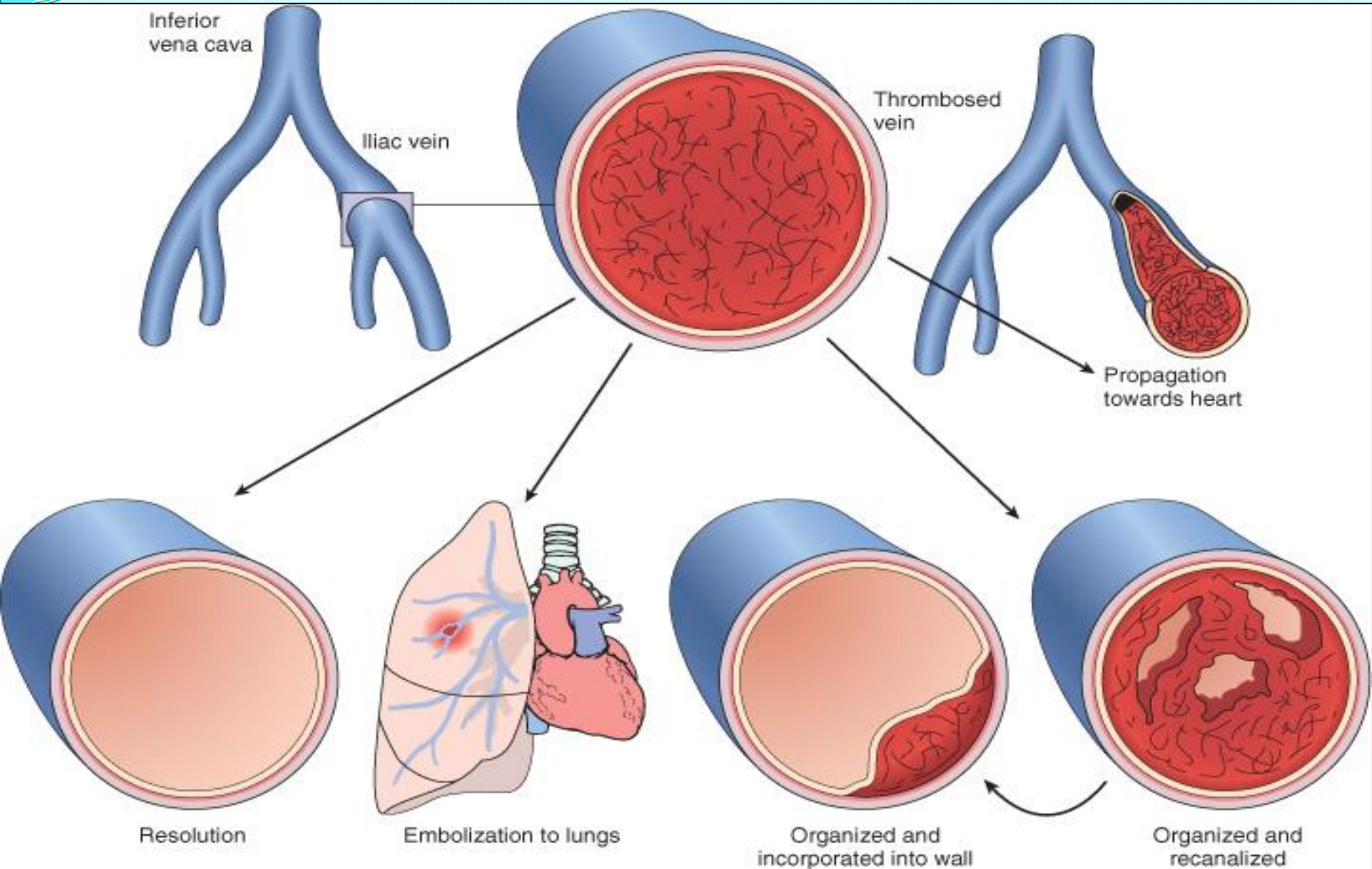
**Tromb în curs de
organizare. (col. H-E).**



**Tromb
recanalizat
(H-E).**



Consecințele trombozei

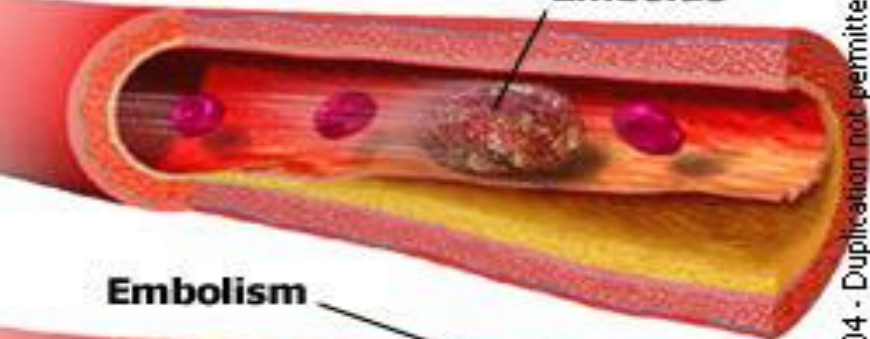


Tromboembolia arterei pulmonare.

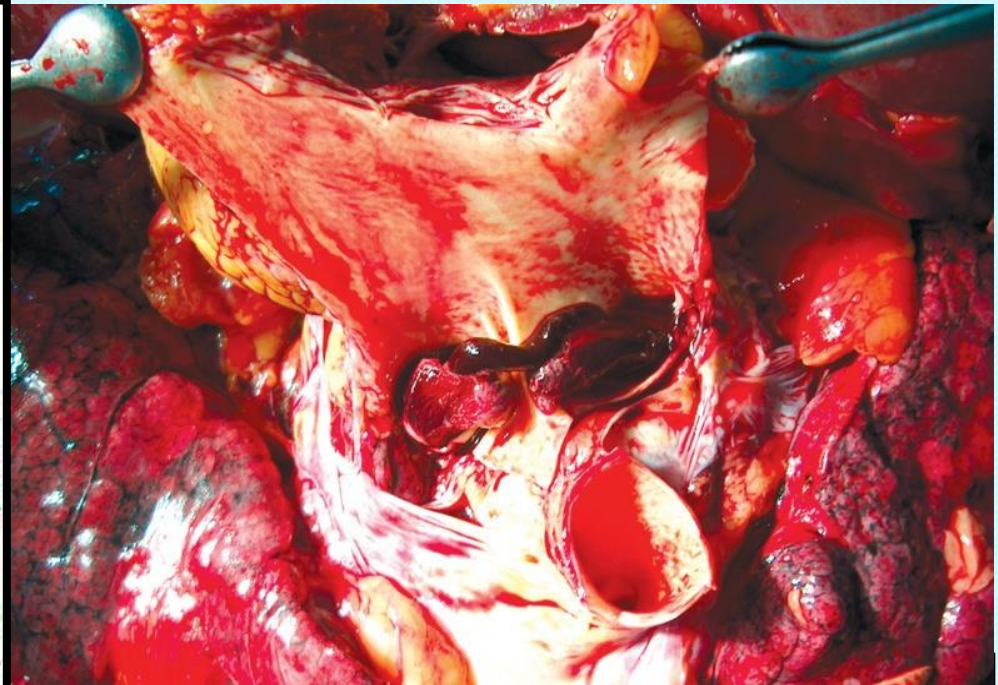
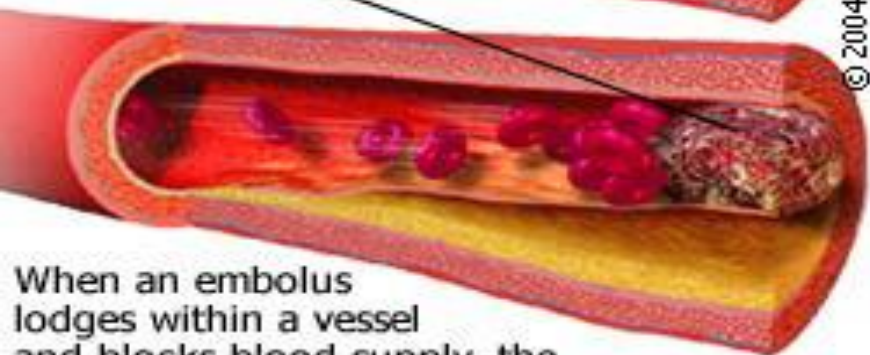
Embolism/Embolus



Embolus

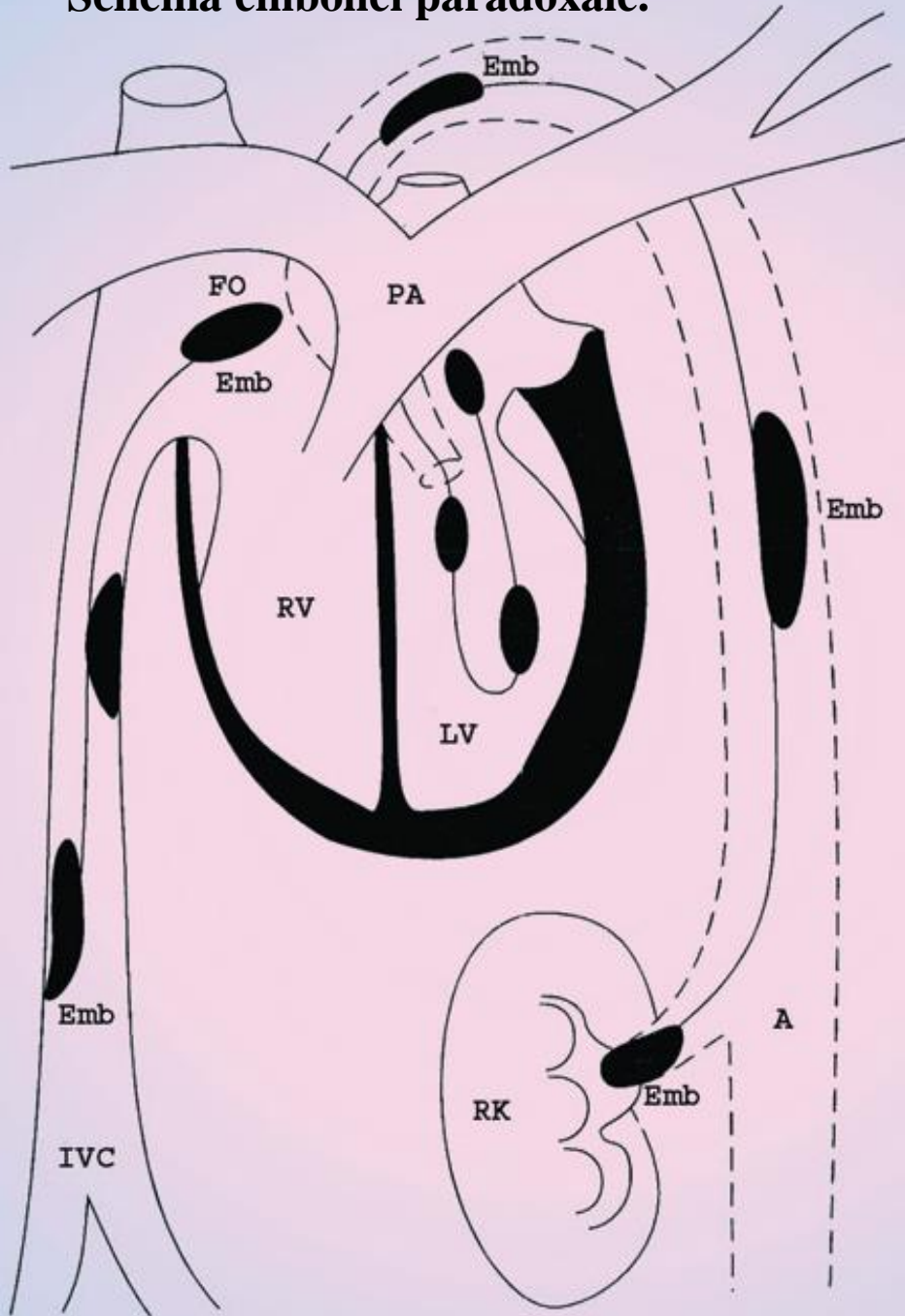


Embolism

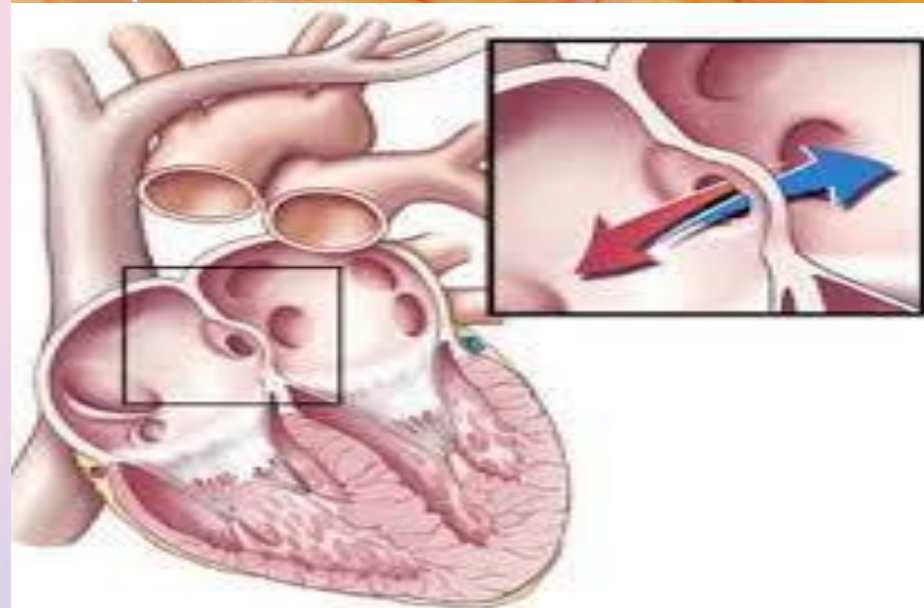
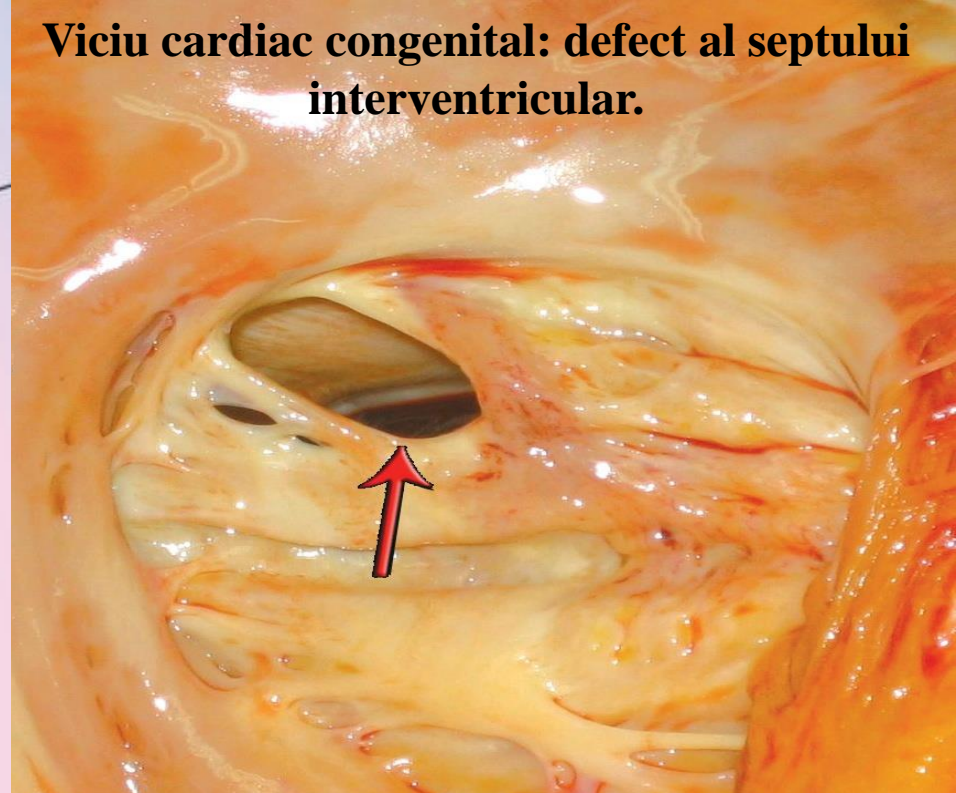


© 2004 - Duplication not permitted

Schema emboliei paradoxale.



Viciu cardiac congenital: defect al septului interventricular.

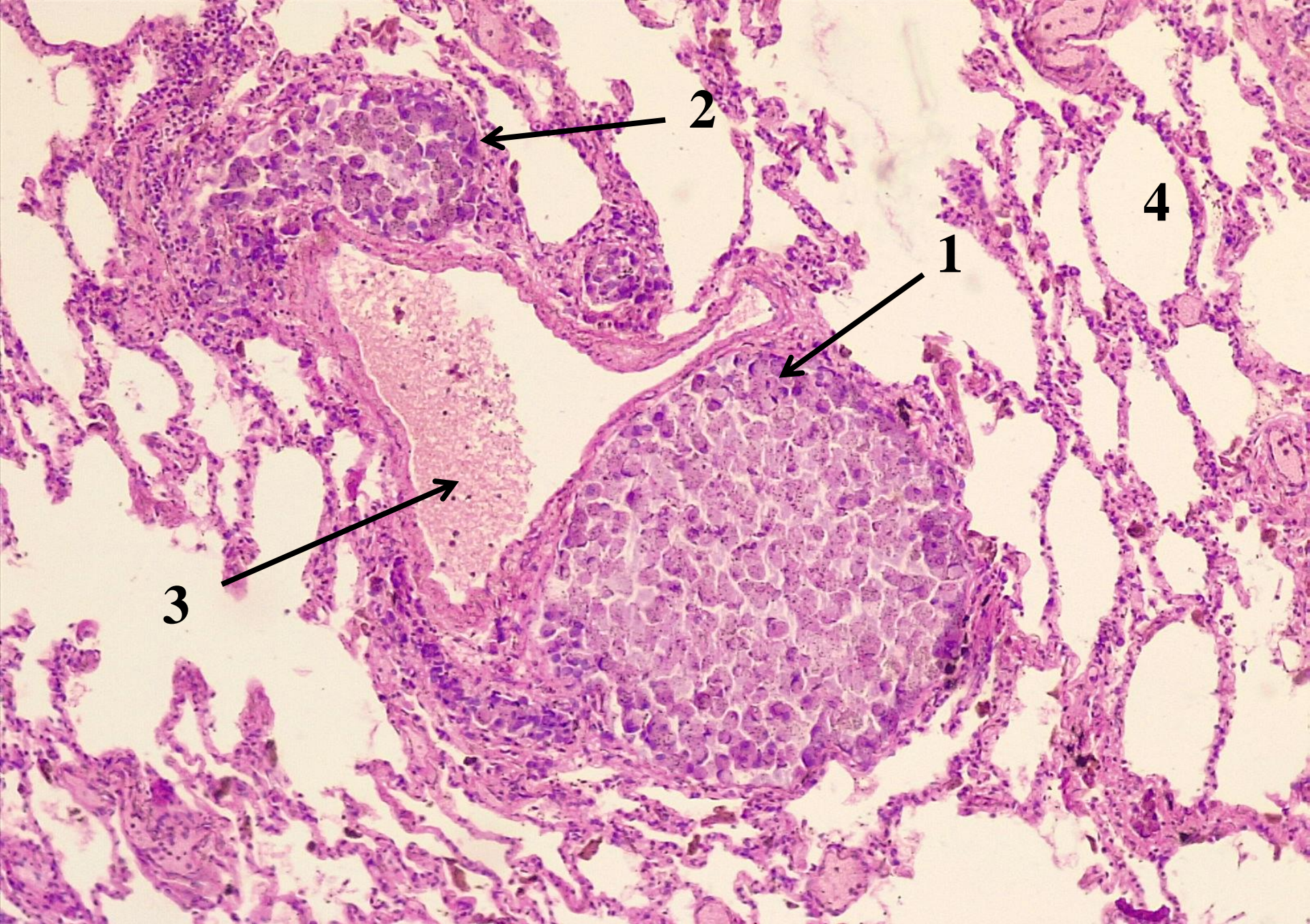


Metastaze de cancer în plămân.



Metastaze de cancer în ficat.





№ 140. Embolia celulară (canceroasă) a vaselor limfatice pulmonare. (Colorație H-E.).

Hemoragiile peteșiale în epicardul inimii.



**Hemoragie (per diabrosin)
în sarcină tubură.**

