



**Female genital tract
diseases.**

Female genital tract diseases.

I. Microspecimens:

№ 215. Fibrocystic mastopathy (*fibro-cystic changes of the mammary gland*). (H.E. stain).

Indications:

1. Cystically dilated ducts.
2. Hyalinized connective tissue between ducts.
3. Unchanged ducts.

In the mammary gland, cystic dilatation of the ducts is observed with formation of cysts of different shapes and sizes, covered with cuboidal epithelium, regionally flattened or atrophied, in their lumen may be eosinophilic content. The cysts are surrounded by dense, fibrillar connective tissue, with areas of hyalinosis and adipose tissue, which also penetrates the lobes. There is no difference between interlobular and intralobular connective tissue, characteristic of the normal gland. Normal intralobular stroma being flaccid, with a myxomatous aspect. Around the cysts is moderate lymphoid infiltration.

At present, the term “fibrocystic changes of the mammary gland” is preferred, given minor clinical significance of these lesions. It represents the most common pathology of the mammary gland during the fertile period. It manifests macroscopically by the appearance in the mammary gland of nodular densities, weakly delimited, sometimes painful, single or multiple, unilateral or bilateral. They are usually encountered in the age group from 30 to 50 years, being rare after menopause. There are two clinical-pathological types: a) non-proliferative and b) proliferative fibrocystic changes. The non-proliferative variant is the most frequent, the main histological changes being the following:

Cysts can be single, solitary or multiple and can have sizes from less than 1 cm to 5-6 cm. Fibrocystic changes are considered a reaction of mammary ducts to cyclic hormonal stimulation, which occurs in the normal menstrual cycle. The diagnosis of certainty can only be established by biopsy and histological examination.

№ 63. Suppurative salpingitis. (*H.E. stain*). **Indications:**

1. Neutrophilic leukocytes in lumen of fallopian tube.
2. Neutrophilic leukocyte infiltration of tubular mucosal villi.
3. Wall of fallopian tube.

Villi of the uterine mucosa are thickened, hyperemic with diffuse infiltration by neutrophil leukocytes, and between villi are neutrophil agglomerations. Wall of the fallopian tube is thickened, edematous, vessels are dilated, hyperemic, diffuse infiltration of the wall with neutrophilic leukocytes (phlegmonous inflammation) is observed.

Purulent salpingitis is an inflammation of the fallopian tube of infectious origin. It is found in pelvic inflammatory disease - ascending infection of the female genital tract (with chlamydia, mycoplasma, gonococci, colibacilli), postpartum or post abortion inflammation (with streptococci and staphylococci), in cases of intrauterine devices. It can be complicated by salpingo-oophoritis, tube-ovarian abscess, pyosalpinx, local or generalized peritonitis, passage into chronic salpingitis.

№ 108. Tubal pregnancy. (*H.E. stain*). **Indications:**

1. Chorionic villi.
2. Decidual tissue.
3. Fallopian tube wall.

In the lumen of the fallopian tube, chorionic villi of variable shape and size, covered with stratified epithelium may be seen. The inner layer is covered by cuboidal cells - cytotrophoblast and the outer layer by polymorphous cells, some of them are multinucleated giant cells, with hyperchromic nuclei - syncytiotrophoblast, stroma of villi is edematized. They are clusters of polygonal decidual cells with clear cytoplasm, foci of necrosis and hemorrhages. At the site of implantation of the fertilized ovum, penetration of of the trophoblastic tissue with multinucleated chorionic cells in the tubular wall can be seen which replacing mucosa and circular muscle layer, being kept only the longitudinal layer. in the wall there are edema, dilation and hyperemia of the vessels, bleeding. There are intact areas of the tubular wall (*not to confuse the villi of the lining of the uterine trunk with the chorionic villi!*).

Tubal pregnancy is the most common form of ectopic pregnancy, in which the passage of the fertilized egg through the uterine tubes is delayed and the implantation occurs outside the body of the uterus. Due to the infiltration of the wall of the fallopian tube with trophoblastic tissue, erosion of the blood vessels and hemorrhage occurs in the lumen of the fallopian tube - hematosalpinx, and as the embryo is grows, the distension of the fallopian tube and the rupture of the wall with intraperitoneal hemorrhage occur. There is a decidual reaction in the endometrium.

№ 107. Hydatidiform mole. (H.E. stain). Indications:

1. Increased in size, edematous chorionic villi.
2. Proliferating chorionic epithelium.

The material is a scrap of the uterine body cavity. There are chorionic villi which are increased in size, of variable form, their stroma is edematous, myxomatous, with cystic cavities with small number of cellular elements, blood vessels are absent. The margins of the villi are irregular, fused, on their surface focal proliferation of the chorionic epithelium, with vacuolar degeneration, consisting of cytotrophoblastic and syncytiotrophoblastic cells may be seen.

Macroscopically the chorionic villi are dilated, with the diameter from 0,5 cm. to 3 cm. of spherical shape, the wall is very thin, fine, they contain a clean, transparent liquid, looking like grape clusters. These cystic formations fill the uterine cavity and may also be present in the blood leakage in case of vaginal hemorrhages. The hydatiform mole represents one of 3 forms of gestational trophoblastic disease: hydatiform mole (complete or partial), invasive mole and choriocarcinoma. Hydatiform mole appears as a result of the abnormal fertilization of the egg, in complete type chorionic epithelial cells are diploid (more commonly karyotype 46XX), all the chromosomes are of paternal origin, and in partial type the chorionic cells are triploid (the normal egg is fertilized by 2 sperm) karyotype 69XXY). In complete mole all chorionic villi are affected, the embryo is absent. In partial one there are affected and normal villi, the embryo is present. Clinically it is manifested by uterine bleeding, the most characteristic sign being the increase of the level of human chorionic gonadotropin in the blood. Clinically it is manifested by uterine bleeding, the most characteristic sign being the increase of the level of human chorionic gonadotropin in the blood. It is most common in young mothers up to 20 years old and in mothers over 40 years old. In 10% of cases of complete hydatiform mole, invasive mole develops, and in 2.5% - choriocarcinoma. Partial mole rarely develops in choriocarcinoma.

№ 111. Choriocarcinoma of the uterus. (H.E. stain). Indications:

1. Epithelial cytotrophoblast cells with clear cytoplasm (Langhans cells).
2. Syncytial atypical cells with hyperchromic nuclei.
3. Foci of hemorrhages.

In microspecimen there are compact tumor tissue, In the micro-preparation we find compact tumor tissue, consisting of 2 components: cytotrophoblastic cells and anaplastic syncytiotrophoblastic cells, which come from the chorionic epithelium. Tumor cells are arranged chaotically, in different proportions, the chorionic villi are missing. There is a marked cellular and nuclear polymorphism. Cytotrophoblastic cells have clear cytoplasm, weakly colored nucleus, and syncytiotrophoblastic cells which vary in shape and size, are intensely basophilic with hyperchromic nuclei, multinucleated giant cells and mitosis figures can be seen. In the tumor stroma is absent, blood vessels are lined by tumor cells, extensive areas of necrosis and bleeding are observed.

Choriocarcinoma is a malignant tumor of the trophoblast, which develops from the complete hydatiform mole (50%), from placental remnants after abortion (25%), after normal birth (20%) or from ectopic pregnancy (5%). It is a very aggressive, invasive tumor, which rapidly metastasizes hematogenously with metastases into the lungs (80%), vagina (30%), brain (10%), liver (10%) and kidneys. Lymphogenic metastases are not characteristic. At the early stage, the tumor tissue penetrates into the myometrium and blood vessels. The tumor is distinguished by remarkable sensitivity to chemotherapy, even metastasis.

II. Macrospecimens:

№ 101. Endometritis.

In the uterine cavity there are blood clots of reddish color and necrotic masses of yellowish color.

Endometritis can be acute and chronic. The acute form is most often caused by the retention in the uterine cavity of placental remnants after birth (puerperal endometritis) or after abortion, the presence of intrauterine devices or may be a manifestation of ascending infection in pelvic inflammatory diseases, e.g., in gonorrhoea. In some cases it can have a severe evolution with diffuse purulent inflammation with the development of metritis, thrombophlebitis and septicemia. Acute endometritis is usually associated with involvement of the uterine tubes - salpingitis.

№ 103. Endometrial polyp.

In the region of the fundus of the uterine body there is a polypous formation, which protrudes into the uterine cavity, with a broad, sessile base, approximately 3-4 cm. in diameter, irregular surface, gray-whitish color, small cystic cavities are observed on section.

Histologically is composed of endometrial glands of basal type, in most cases with their cystic dilation, it is characteristic presence of a blood vessels groups with thickened, sclerosed walls. Depending on predominant tissue component, they may be glandular, fibro-glandular or leiomyomatous polyps. They occur predominantly during the perimenopausal period. It is clinically manifested by uterine bleeding, and those of small size can be asymptomatic and detected incidentally.

№ 105. Uterine corpus carcinoma.

In uterine cavity there is a tumor node with exophytic type of growth, which almost completely fills the cavity, has a rough, irregular surface. On section has gray-whitish color, consistency is friable.

Uterine corpus carcinoma is more common in menopausal age 60-70 years, but it can also occur in young women. The main precursors are glandular hyperplasia of endometrium without atipia (1-3%) and most commonly - atypical glandular hyperplasia / intraepithelial endometrial neoplasia, which coexists with carcinoma in 25-40% of cases. The tumor may has infiltrative or e exophytic type of growth, secondary changes as foci of necrosis, ulceration or inflammation may occur in the tumor node. Uterine corpus carcinoma can infiltrate myometrium, parametrium, cervix, vagina, urinary bladder and colonum. The most common metastases occur in the pelvic, para-aortic and inguinal lymph nodes. Hematogenous metastases are observed in the lungs, liver, bones and other organs.

№ 106. Uterine cervical carcinoma

In cervix of the uterus there is a tumor node with exo-endophytic type of growth, which infiltrates cervical wall, has rregular shape, with imprecise limits, rough surface, it is nodular of gray-yellow color.

Cervical carcinoma ranks 2-3 in all cancers in women. It is most commonly found in the average age of 55 years. It is preceded in most cases by HPV infection, especially serotypes 16 and 18, HPV 16 causing squamous cell carcinoma and HPV 18 - cervical adenocarcinoma.

Morphological manifestations of papillomavirus infection are squamous intraepithelial lesions, which may be low and high grade (LSIL and HSIL). The predominant histological forms of cervical carcinoma are keratinized or non-keratinized squamous cell carcinoma (~ 70%) and adenocarcinoma (10-25%). Macroscopically, the carcinoma of the vaginal portion of the cervix grows more frequently exophytic, and the carcinoma of the cervical canal - endophytic. The tumor may invade the cervical wall, vagina and adjacent pelvic organs, e.g., urinary bladder, rectum. Lymphogenous metastases occur in the pelvic, retroperitoneal, and inguinal lymph nodes and hematogenous - in the lungs, liver, and other organs.

№ 107. Chronic salpingitis.

The uterine tubes are deformed, serous membrane is opaque, sclerosed, whitish, the surface is uneven.

Chronic salpingitis is in most cases a consequence of acute salpingitis. The chronic inflammatory process results in fibrosis and sclerosis of the wall, deformation of the fallopian tube, the lumen becomes unevenly stenosed, adhesions appear between the villi of the mucosa, which leads to tubal pregnancy, and if the process is bilateral - to infertility. In some cases, hydrosalpinx develops - dilated atrophied fallopian tube with thin wall with aqueous liquid into the lumen. As a result of chronic salpingitis, adhesions between the tube and the ovary, small intestine, and other pelvic organs may occur.

№ 110. Ovarian cystadenoma.

In the ovary there is a multicameral (multilocular) cystic formation, with thin walls, 1-2 mm in thickness, smooth internal surface, of whitish-grayish color, without content.

The most common ovarian tumors are tumors from the surface epithelium - about 65% of the total number, serous, mucinous and endometrioid tumors, which usually have a cystic structure, predominate. In serous tumors, the cysts contained serous, clear content, the mucinous ones contain mucin, and the endometrioid cysts have a hemorrhagic, "chocolate" content. Serous and mucinous cysts in most cases are benign, and in 25% of serous and 10% of mucinous are malignant.

№ 111. Ovarian teratoma (dermoid cyst).

The macrospecimen has a cystic formation filled with sebum, hair, has a spongy appearance, white-yellowish color, occasionally can be foci of bone, cartilage or teeth.

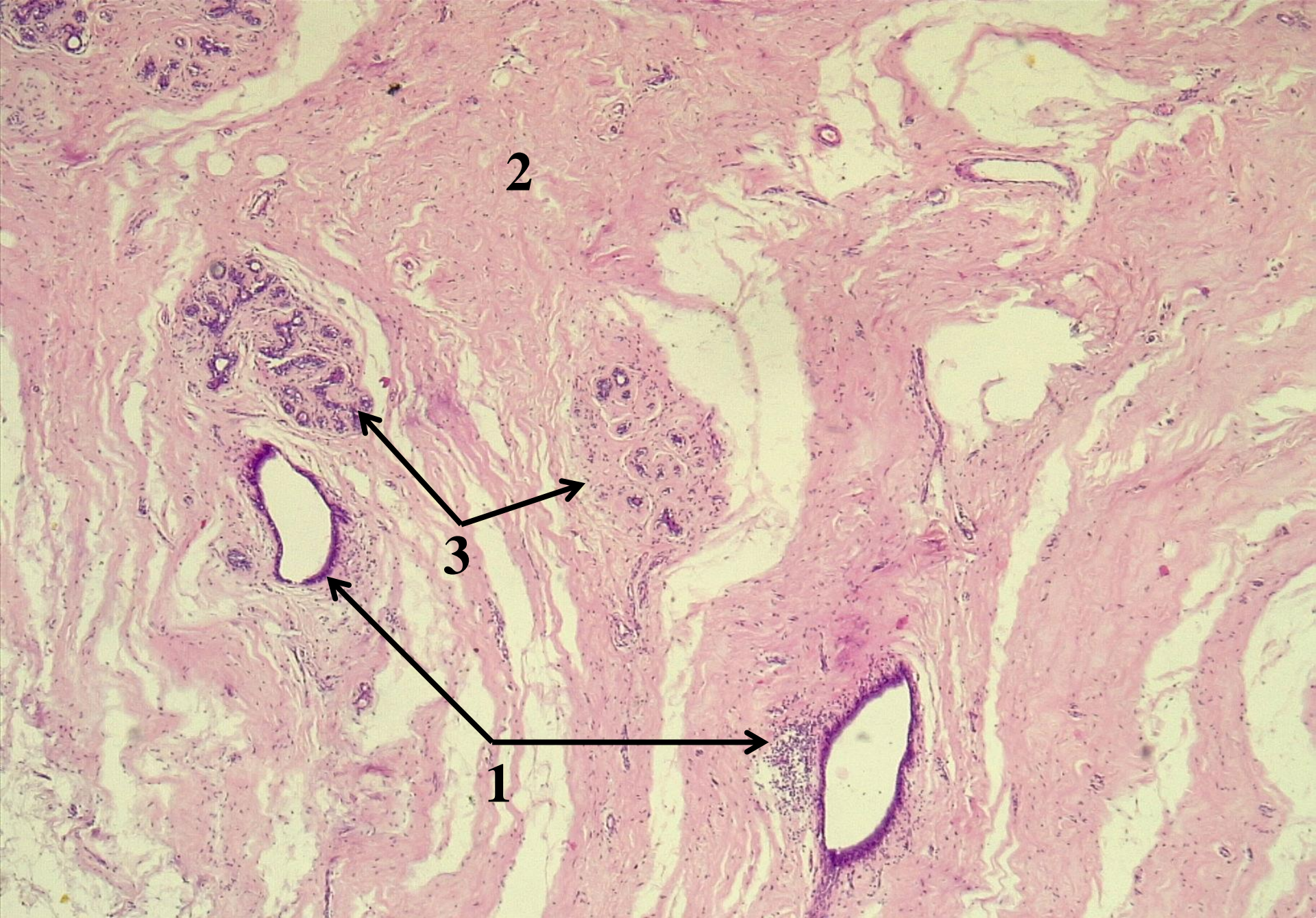
Dermoid cysts are a variant of mature ovarian teratomas, which derive from the germ cells of the 3 embryonic layers: the ectoderm, the entoderm and the mesoderm. It represents 15-20% of ovarian tumors, especially in young women, usually unilateral. In the absolute majority of cases there are benign tumors, and in about 1% they can be malignant, usually squamous cell carcinoma.

№ 108. Tubal pregnancy.

The uterine tube is dilated, up to 2-3 cm in diameter, ellipsoid in shape, blood clots, fragments of placental tissue and gray-colored fetal remnants are observed on the section.

Ectopic pregnancy constitutes about 1% of the total number of pregnancies, and tubal localization is the most frequent - more than 90%. Much less rarely is ovarian and abdominal pregnancy encountered. Ectopic pregnancy constitutes about 1% of the total number of pregnancies, and tubal localization is the most frequent - more than 90%. Much less rarely is ovarian and abdominal pregnancy encountered.

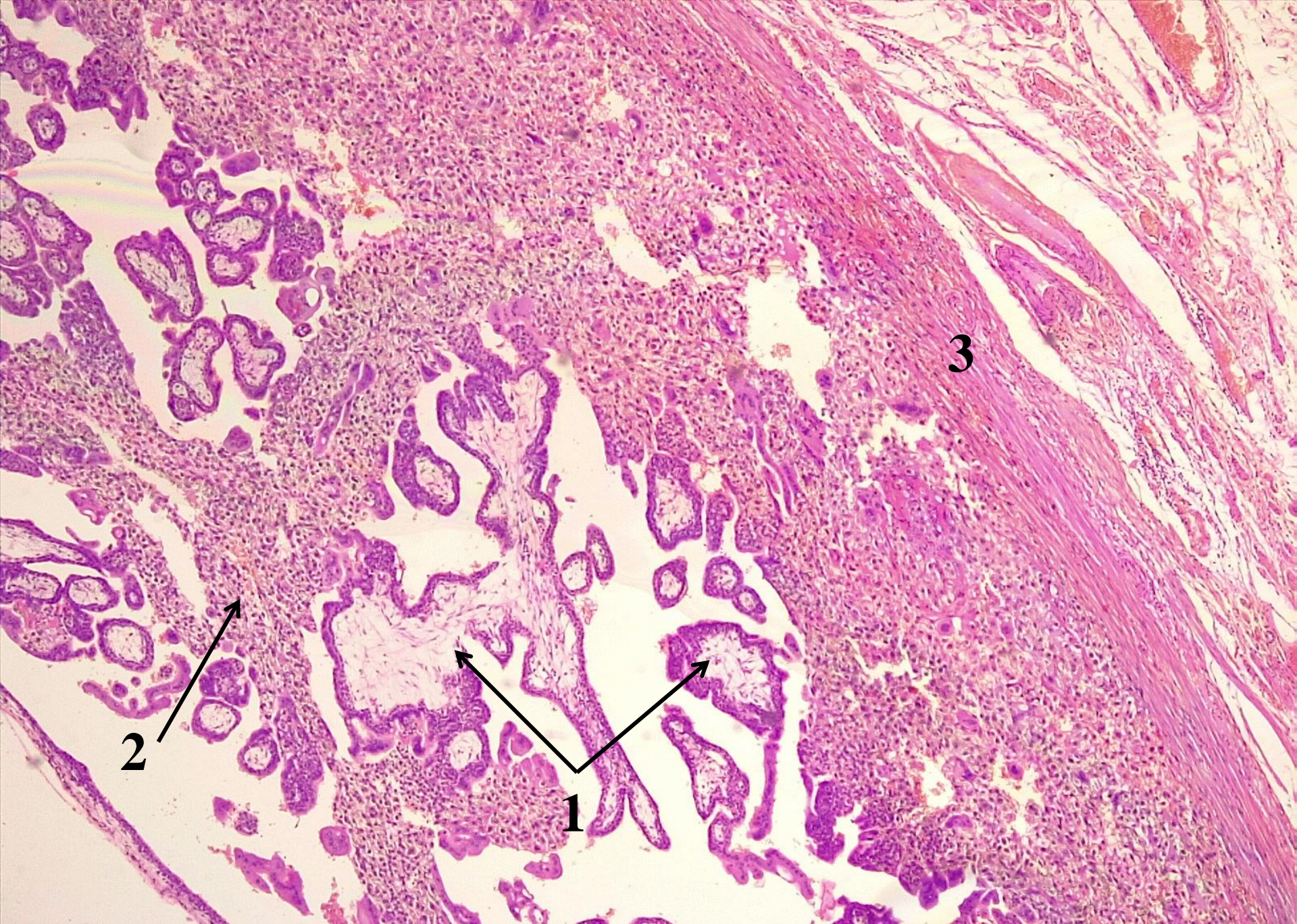
The salpingitis results in fibrosis processes and subsequent tube deformation. The most frequent localization is in the ampulla region of the fallopian tube, much less frequently in the interstitial region of the horn of the uterine corpus. Tubal pregnancy in dynamic evolves towards the rupture of the wall, which occurs suddenly, with a clinical pattern of acute abdomen and intraperitoneal hemorrhage with hemorrhagic shock. In some cases, the embryo is detached from the tubular wall, dies and is expelled into the peritoneal cavity through the fimbriated portion of fallopian tube - tubal abortion. The embryo / fetus in the abdominal cavity may be mummified or calcified (lithopedion). Aceleași modificări pot surveni în embrionul/fătul, care este eliminat în cavitatea abdominală prin ruptura trompei.



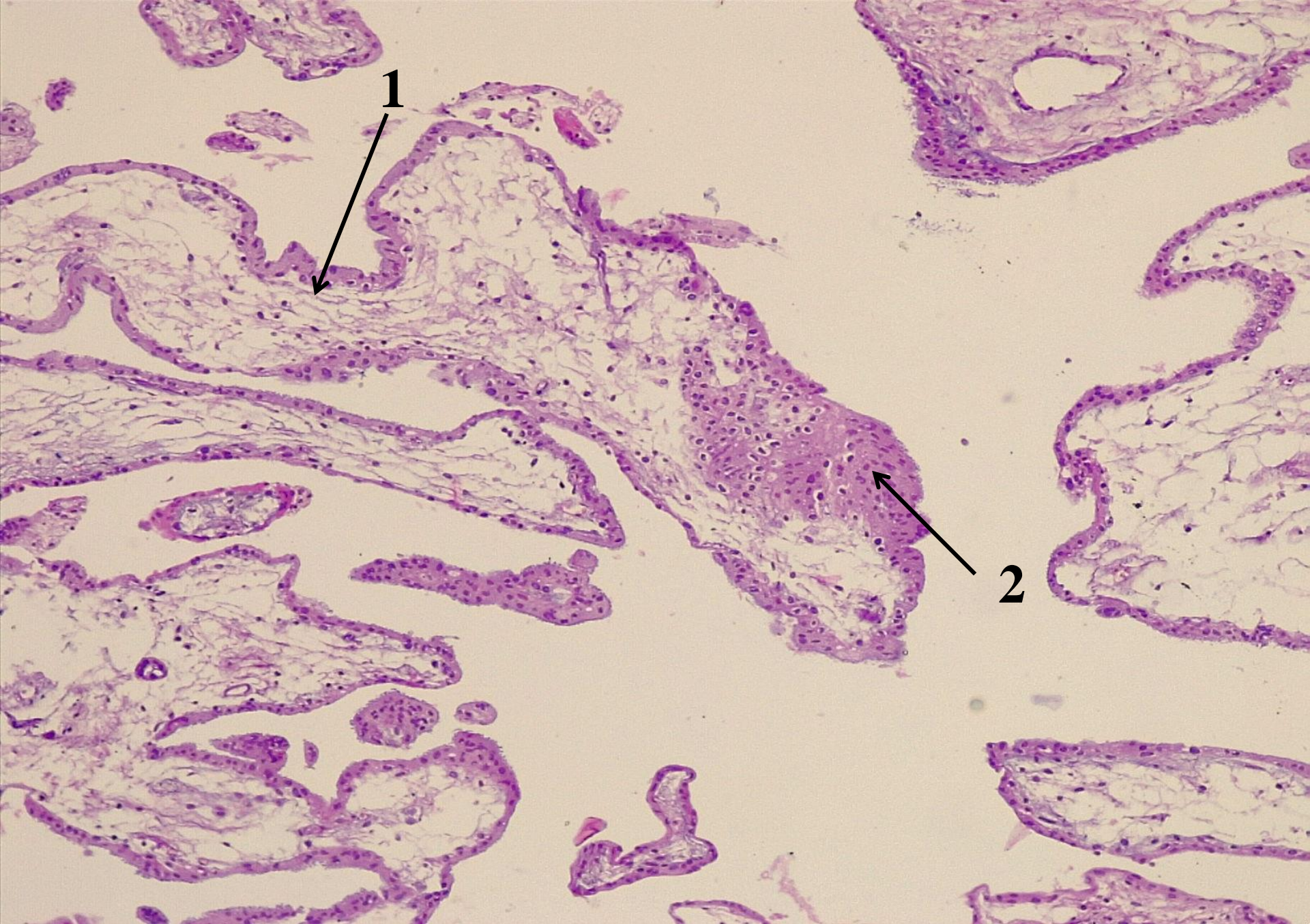
№ 215. Fibrocystic mastopathy. (H.E. stain).



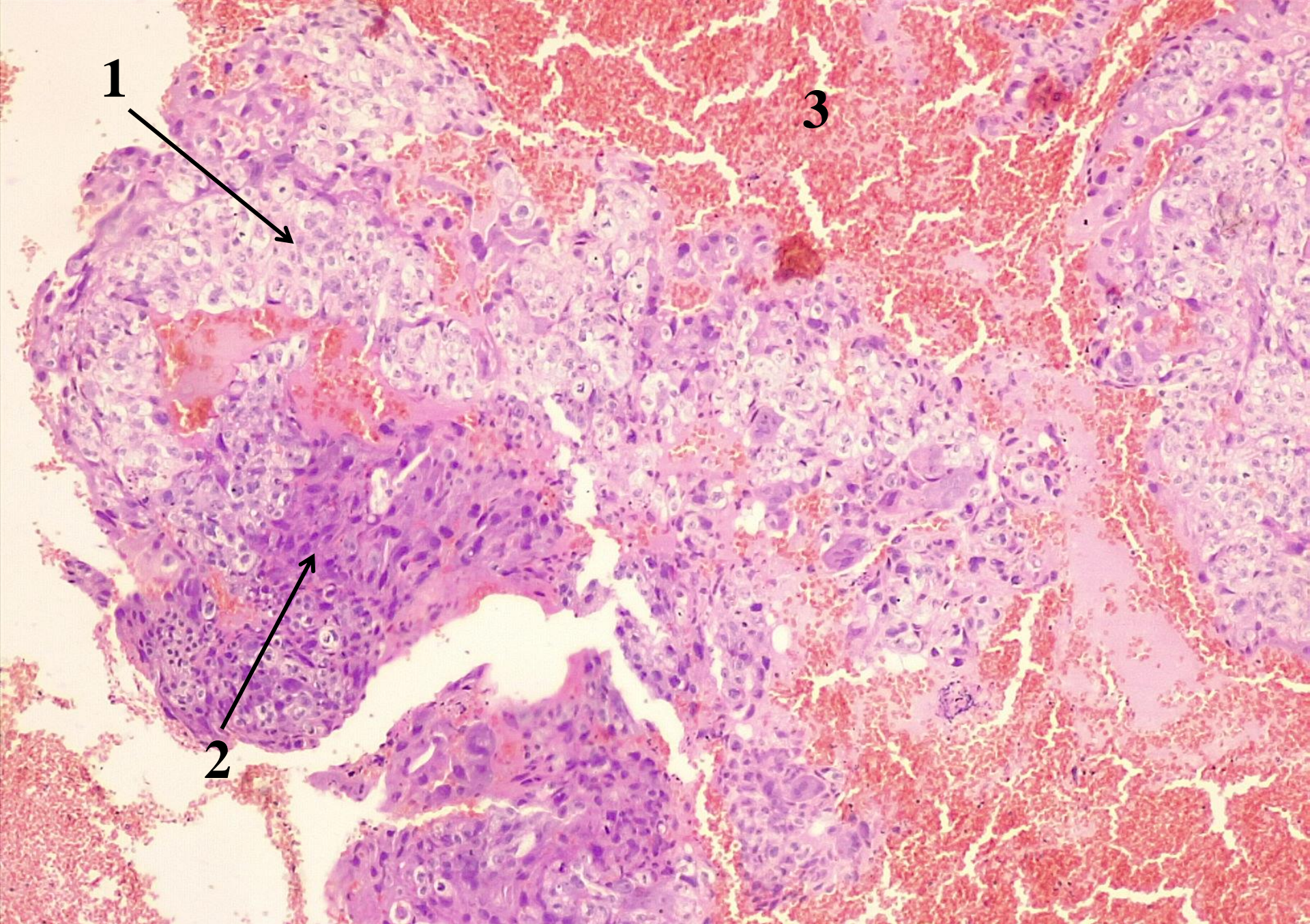
№ 63. Suppurative salpingitis. (H.E. stain).



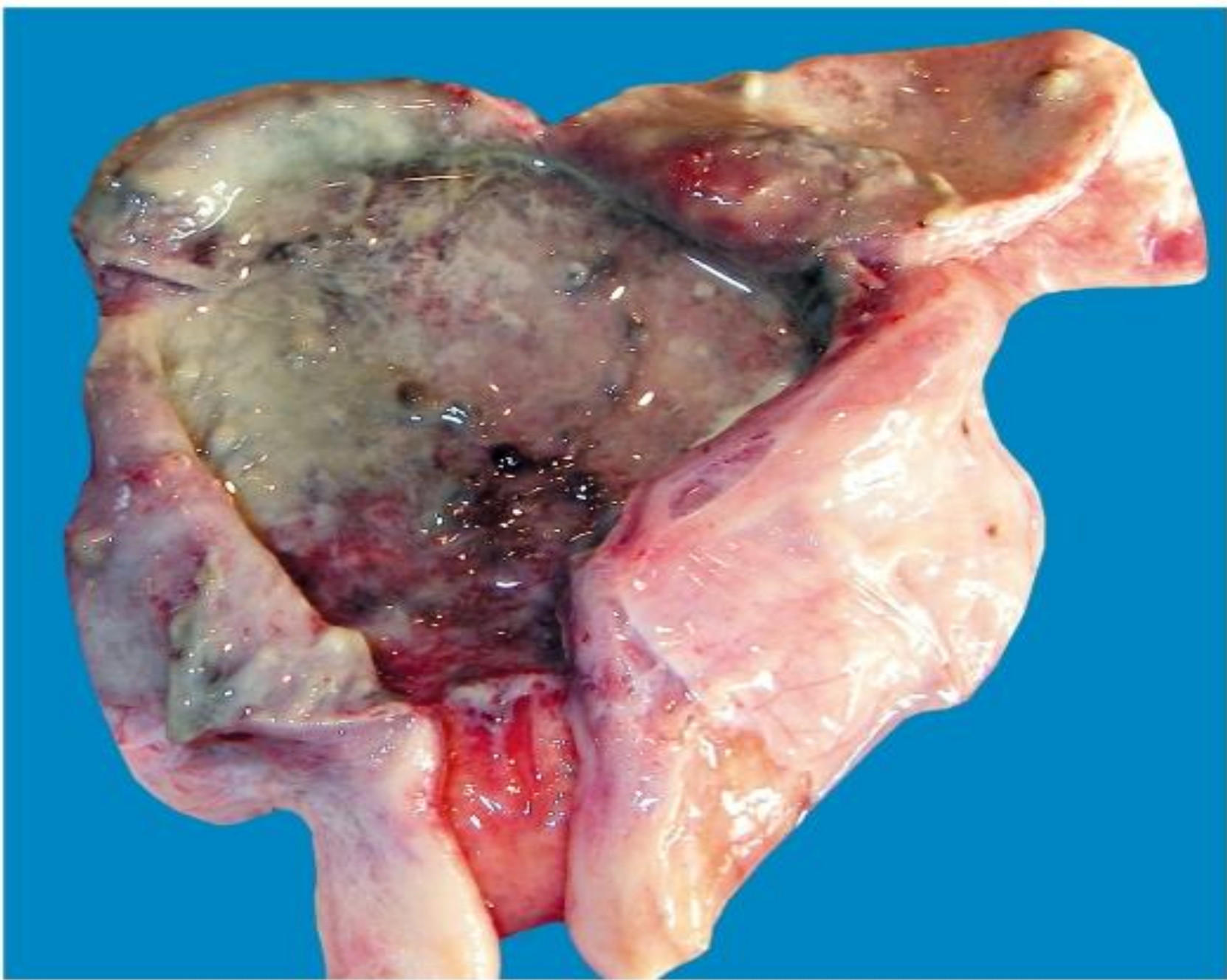
№ 108. Tubal pregnancy. (H.E. stain).



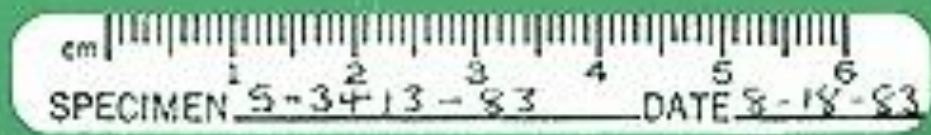
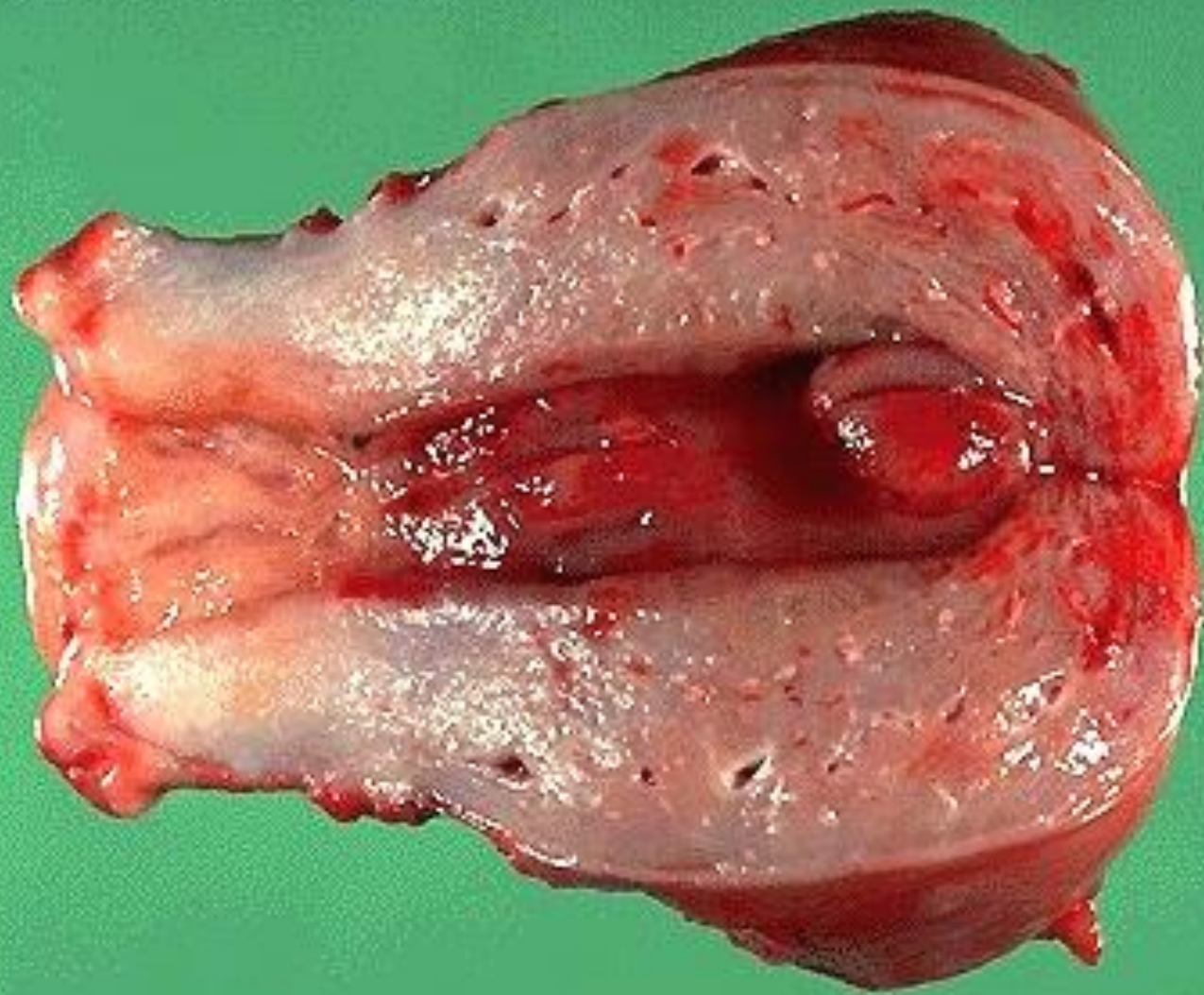
№ 107. Hydatidiform mole. (*H.E. stain*).



№ 111. Choriocarcinoma of the uterus. (H.E. stain).



№ 101. Endometritis.



№ 103. Endometrial polyp.



№ 105. Uterine corpus carcinoma.



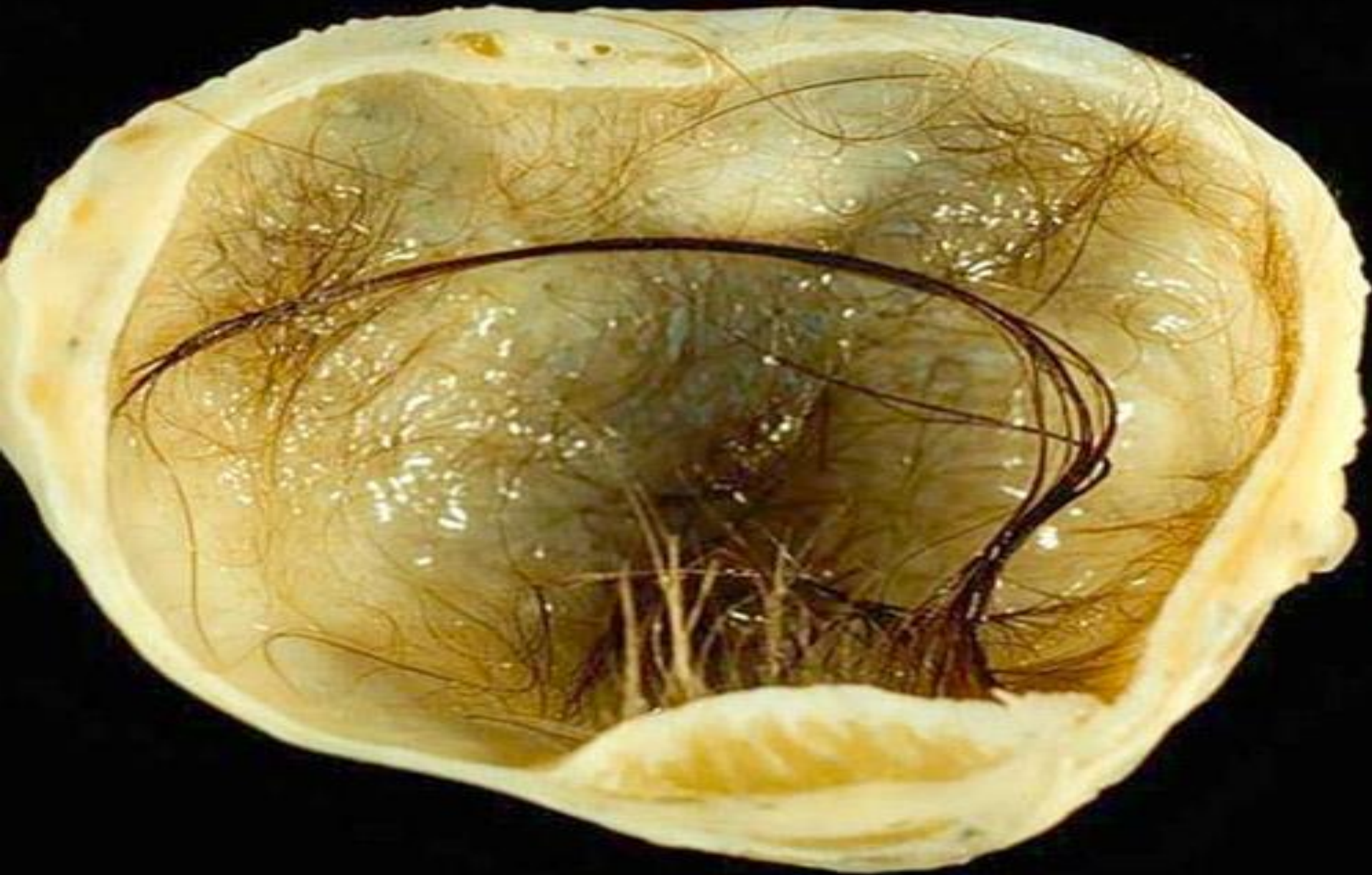
№ 106. Uterine cervical carcinoma.



№ 107. Chronic salpingitis.



№ 110. Ovarian cystadenoma.



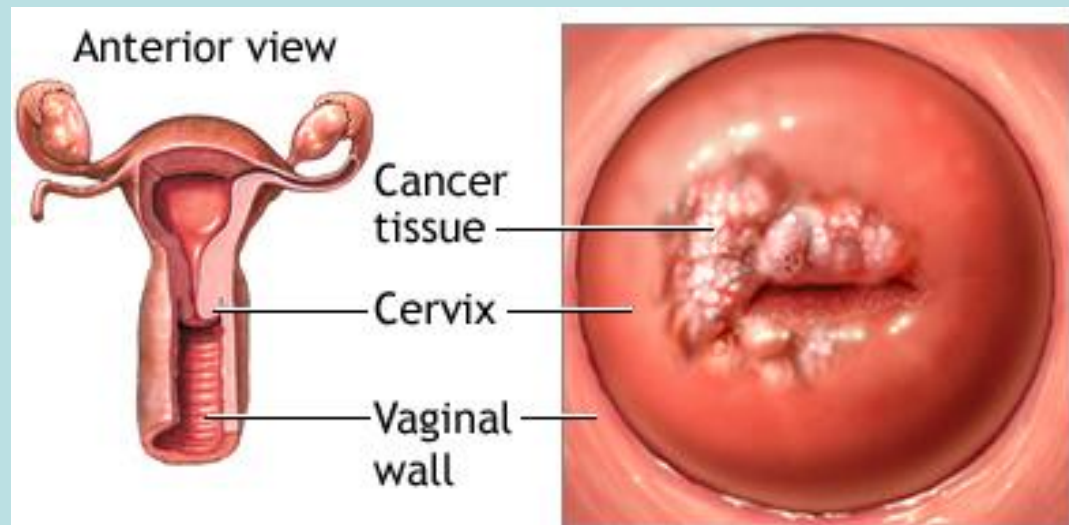
№ 111. Ovarian teratoma (dermoid cyst).



№ 108. Tubal pregnancy.

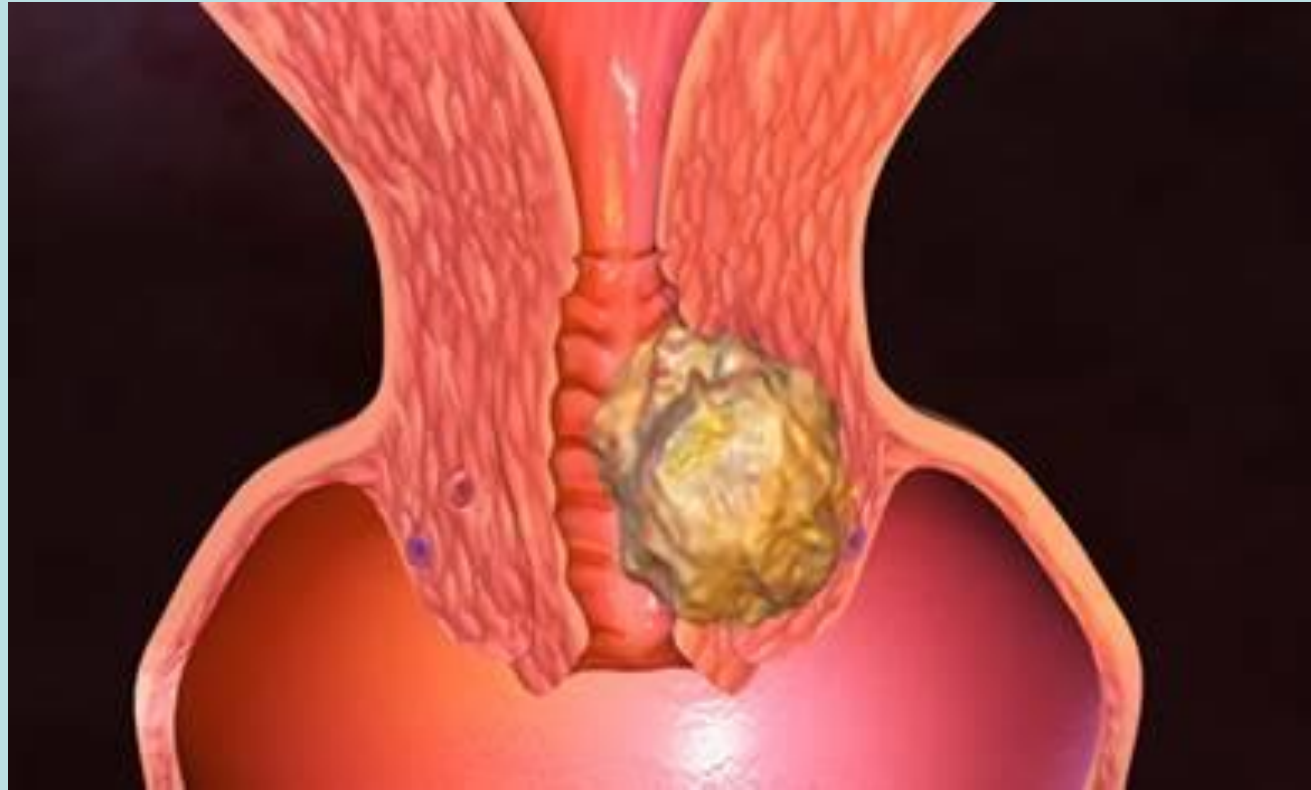
CERVIX OF THE UTERUS

The cervix is a kind of barrier that protects the upper parts of the female genital tract from potentially dangerous infections. At the same time, the cervix itself is a target for various carcinogenic effects that can lead to the development of invasive carcinoma.



CERVIX OF THE UTERUS

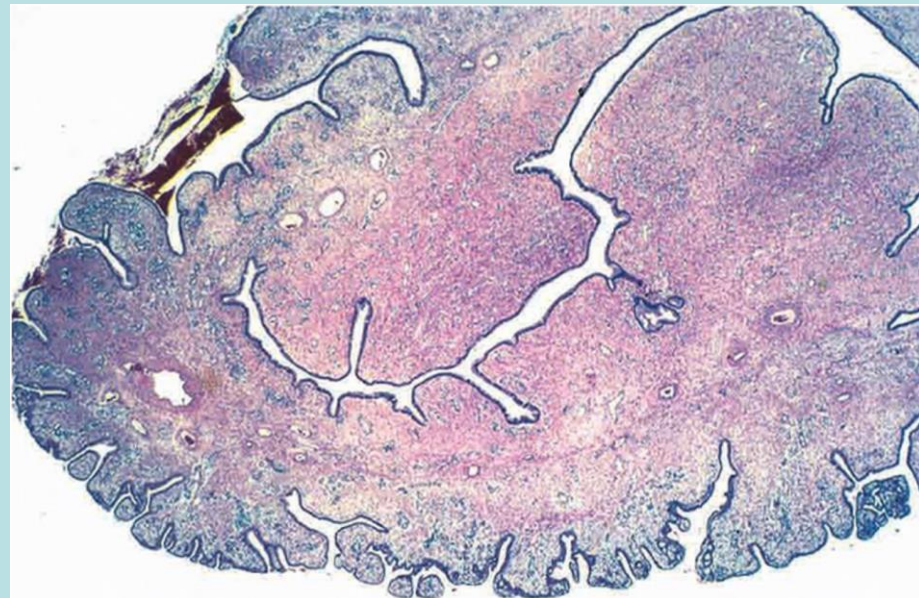
In 50% of cases, cervical carcinoma is fatal. The potential cancer risk has become the main reason for introducing a screening program (microscopic examination of Pap smears and histological examination of cervical biopsy specimens).



Endocervical Polyps

Endocervical polyps are benign polypoid masses seen protruding from the endocervical mucosa (sometimes through the exocervix). They can be as large as a few centimeters, are soft and yielding to palpation, and have a smooth, glistening surface, which are observed in 2-5% of adult women. These lesions may bleed, thereby arousing concern, but they have no malignant potential.

Endocervical polyp with a dense fibromyxomatous stroma covered by endocervical cylindrical epithelium.



Endocervical Polyps

Most polyps are localized in the cervical canal, the size of the polyps varies from very small and flat to large formations that reach 5 cm in diameter and can protrude through the external orifice. An effective treatment is curettage of the cervix or surgical removal of the polyp. Most researchers support the view of their dishormonal nature.



NEOPLASIA OF THE CERVIX.

There is no other malignant tumor other than cervical carcinoma, which would better confirm the enormous positive effect of screening, early diagnosis and treatment of the tumor on mortality. 50 years ago, cervical carcinoma was the leading cause of death for women from oncological diseases in the United States. But at present, the mortality rate has decreased by $\sim 70\%$, and now cervical carcinoma takes 8th place in the structure of causes of death from oncological diseases.



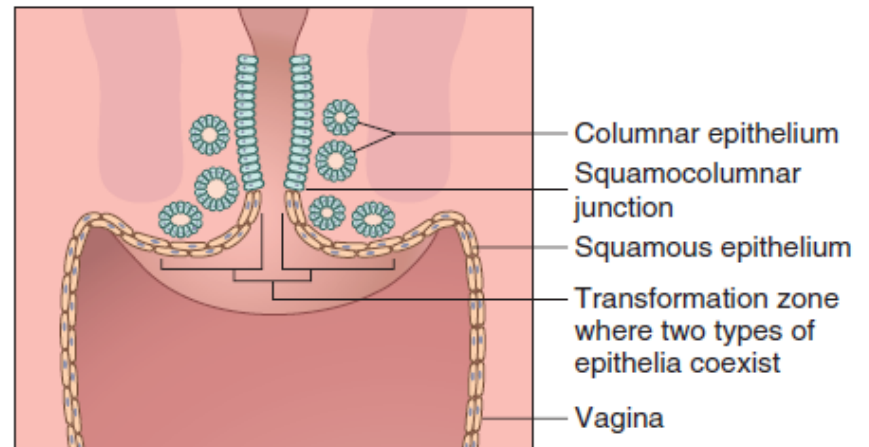
NEOPLASIA OF THE CERVIX.

For the discovery of HPV as the cause of cervical cancer, Harold zur Hausen was awarded the Nobel Prize in 2008. HPVs are DNA-containing viruses that are classified by DNA structure and are divided into high and low oncogenic risk groups. Low oncogenous HPV is the cause of sexually transmitted genital warts of the vulva, penis and perianal region, and highly oncogenous HPV is the only significant cervical carcinogenesis factor. Currently, 15 highly oncogenic HPVs have been identified. In terms of cervical damage, the most important role is played by type 16 HPV (~ 60%) and type 18 HPV (~ 10%). Other types of HPV (each individually) are responsible for the development of less than 5% of cervical carcinoma cases.



NEOPLASIA OF THE CERVIX.

HPV, the causative agent of cervical neoplasia, has a tropism for the immature squamous cells of the transformation zone. Most HPV infections are transient and are eliminated within months by an acute and chronic inflammatory response. A subset of infections persists, however, and some of these progress to cervical intraepithelial neoplasia (CIN), a precursor lesion from which most invasive cervical carcinomas develop.



NEOPLASIA OF THE CERVIX.

Important risk factors for the development of CIN and invasive carcinoma thus are directly related to HPV exposure and include:

- Early age at first intercourse
- Multiple sexual partners
- Male partner with multiple previous sexual partners
- Persistent infection by high-risk strains of papillomavirus (types 16 and 18)



NEOPLASIA OF THE CERVIX.

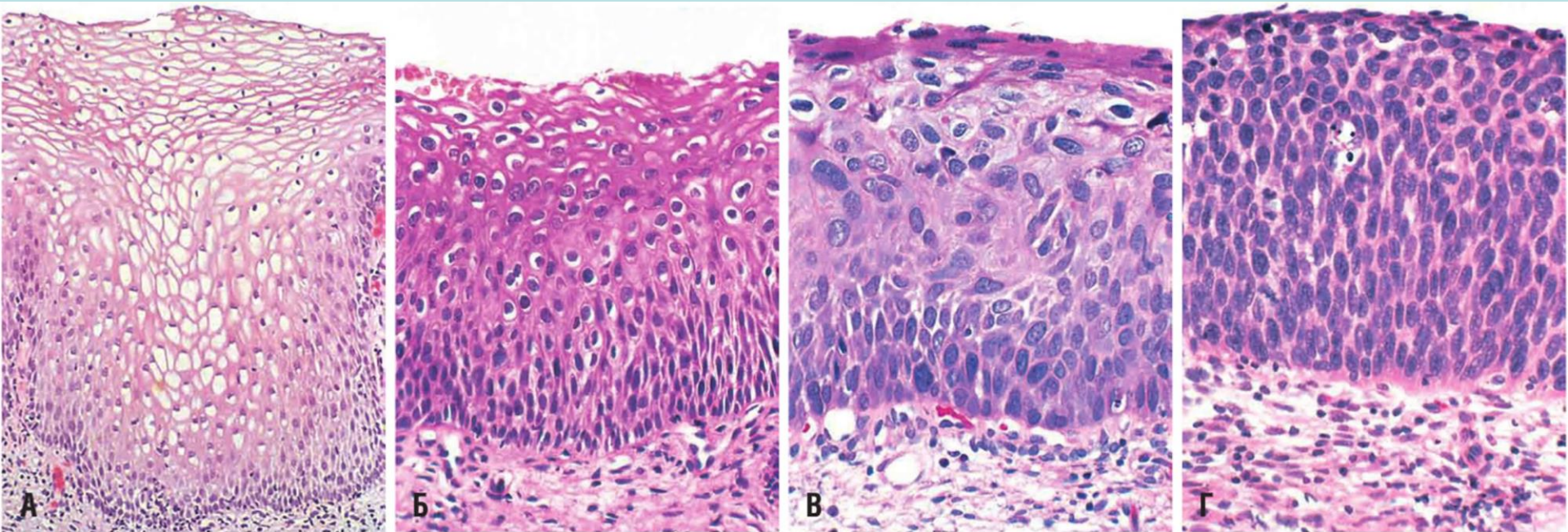
Table 18-1 Natural History of Squamous Intraepithelial Lesions (SILs)

Lesion	Regress	Persist	Progress
LSIL (CIN I)	60%	30%	10% (to HSIL)
HSIL (CIN II, III)	30%	60%	10% (to carcinoma)*

LSIL, low-grade SIL; HSIL, high-grade SIL.

*Progression within 10 years.

Cervical Intraepithelial Neoplasia (CIN)



(A) Normal stratified squamous epithelium is given for comparison.

(B) Low-grade squamous intraepithelial lesion (LSIL) (CIN I) with koilocytosis.

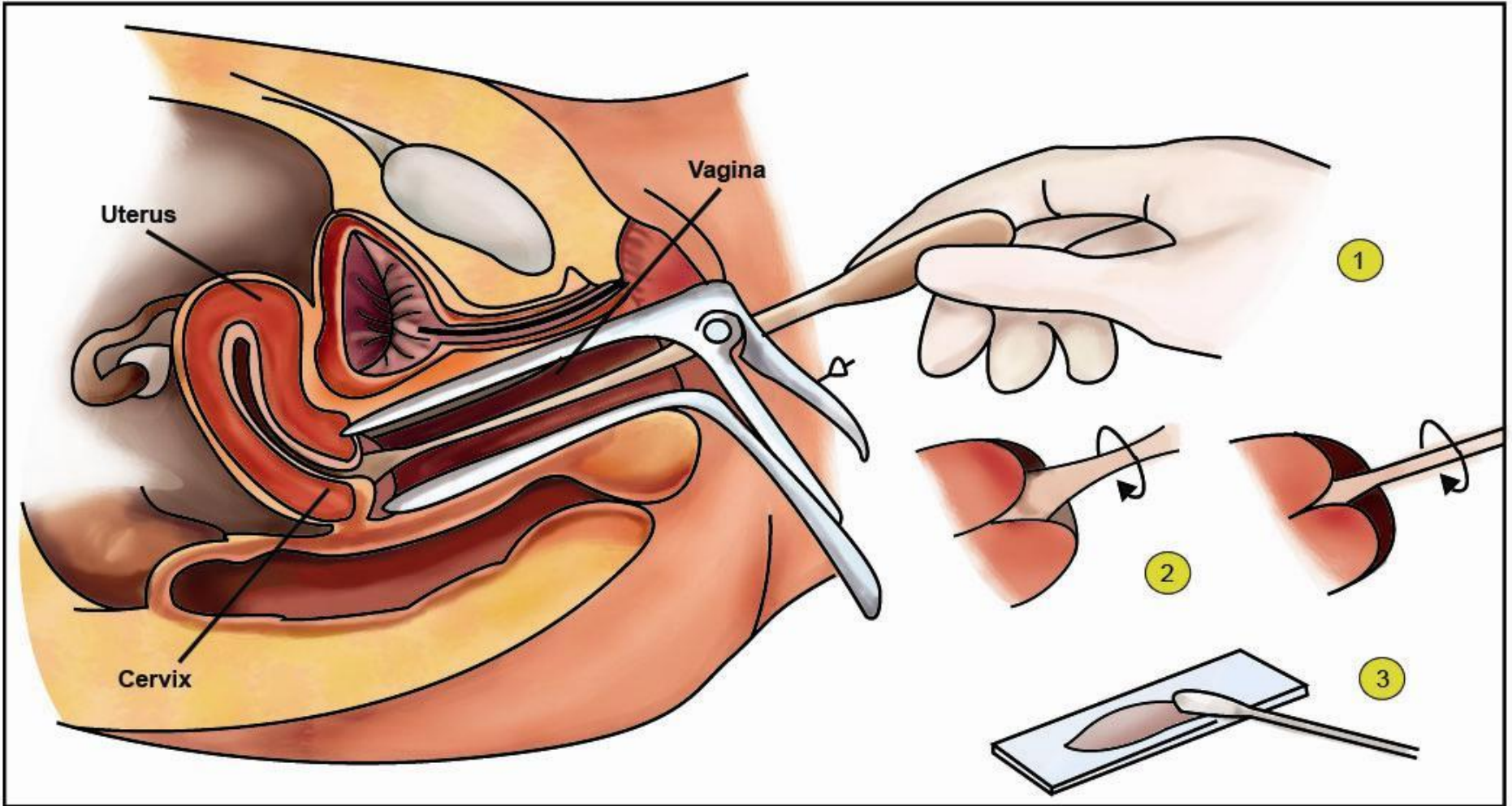
(C) High-grade squamous intraepithelial lesion (HSIL) (CIN II) with progressive atypia and the spread of immature cells of the basal layer above the lower third of the epithelium.

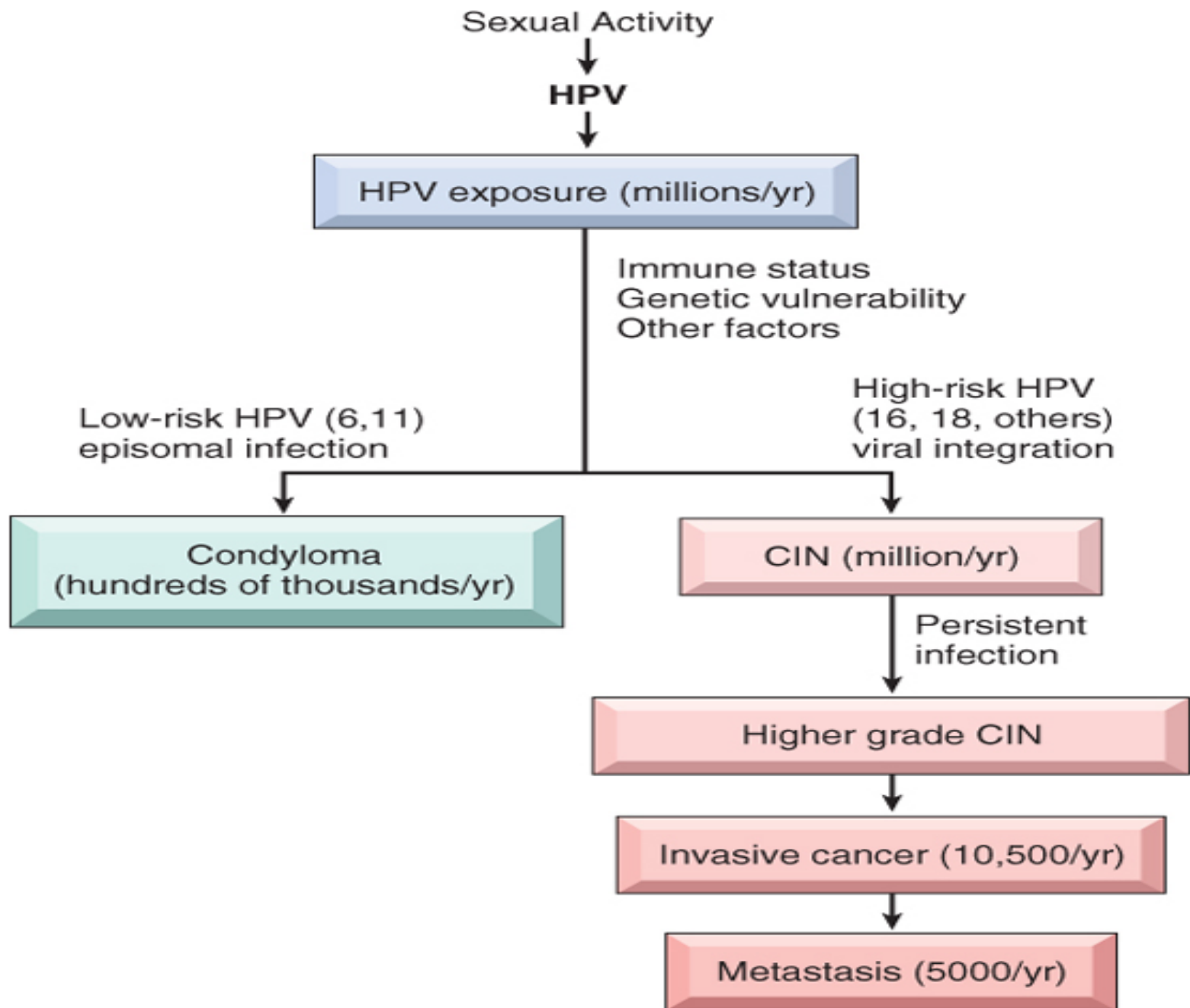
(D) High-grade squamous intraepithelial lesion (HSIL) (CIN III) with diffuse atypia, lack of maturation of the cells of the basal layer and the spread of immature cells of the basal layer to the surface of the epithelium.

Cytology screening for precancerous lesions

- Cytologic examination can detect precancerous lesions long before any abnormality can be seen grossly
- For cytologic examination the cervix is examined and the cells lining the cervical wall at the transformation zone are scrapped/ sampled with a spatula and then spread on a slide. They are then fixed, stained (Papanicolaou stain) and examined under a light microscope.
- This screening for precancer should be done on all young and old women (usually from age of 21 onwards).

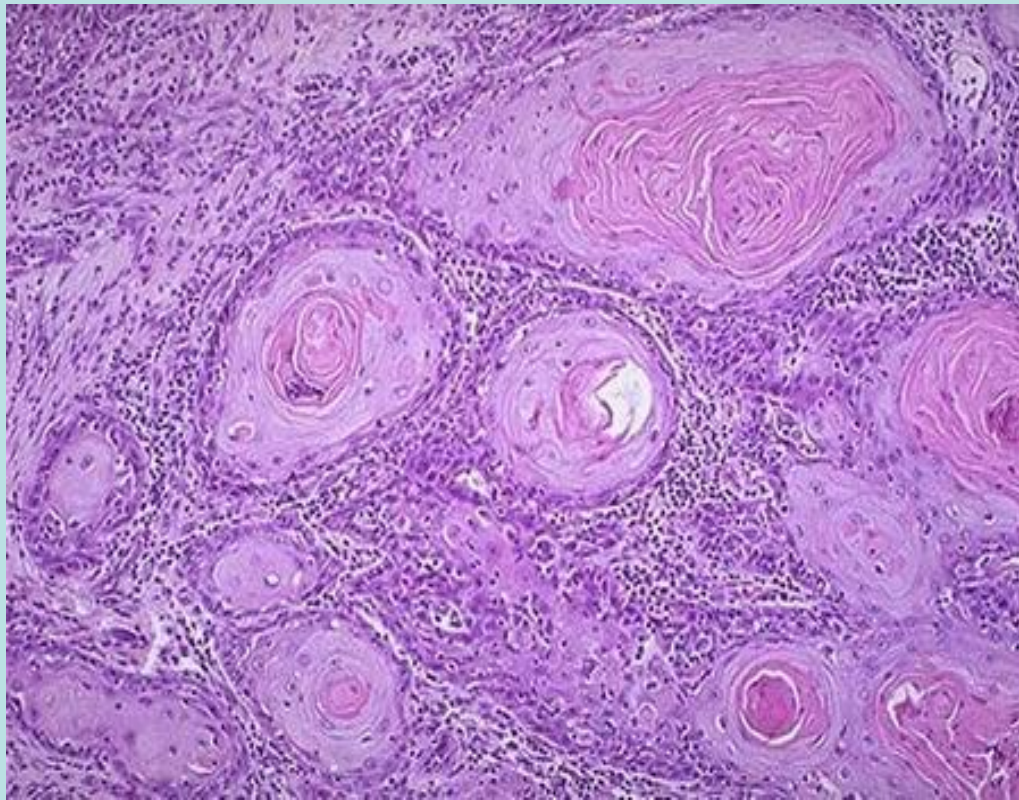
PAP TEST





Invasive Carcinoma of the Cervix

The most common cervical carcinomas are squamous cell carcinomas (75%), followed by adenocarcinomas and mixed adenosquamous carcinomas (20%) and small cell neuroendocrine carcinomas (less than 5%). All of these types of carcinomas are caused by HPV.



Cervical Carcinoma, staging

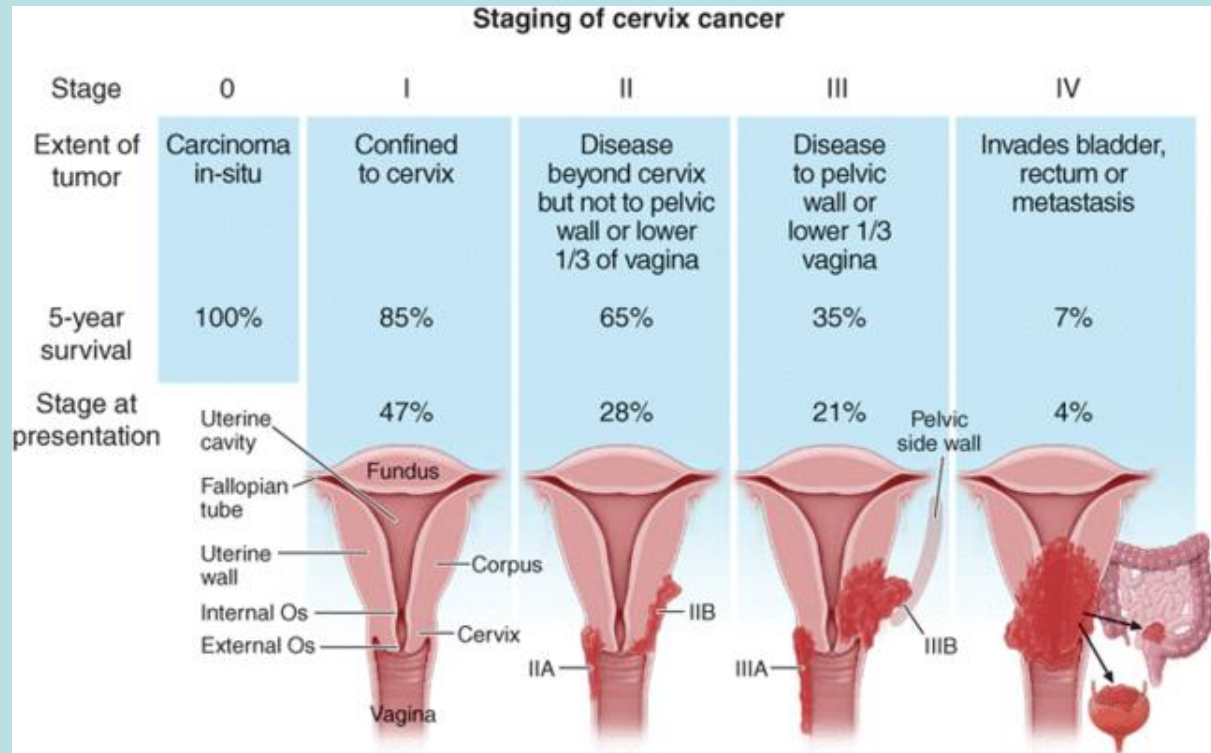
0- Carcinoma in Situ

1- Confined to the cervix

2- Extension beyond the cervix without extension to the lower third of Vagina or Pelvic Wall

3- Extension to the pelvic wall and / or lower third of the vagina

4- Extends to adjacent organs



Cervical Carcinoma, Clinical Course

- Many of cervical cancers are diagnosed in early stages, and the vast majority are diagnosed in the pre-invasive phase.
- More advanced cases are seen in women who either have never had a Pap smear or have waited many years since the prior smear.
- The early stages of cervical cancer may be completely asymptomatic.
- Vaginal bleeding, contact bleeding, or (rarely) a vaginal mass may indicate the presence of malignancy. Also, moderate pain during sexual intercourse and vaginal discharge are symptoms of cervical cancer. In advanced disease, metastases may be present in the abdomen, lungs or elsewhere.
- Most patients with stage IV die due to the local spread of the tumor (for example, tumor growth into the bladder and ureters, which leads to ureteral obstruction, pyelonephritis and uremia), and not from distant metastases.



BODY OF UTERUS.

ABNORMAL UTERINE BLEEDING

Common causes include endometrial polyps, leiomyomas, endometrial hyperplasia, endometrial carcinoma, and endometritis. The probable cause of uterine bleeding in any given case depends somewhat on the age of the patient. Abnormal bleeding from the uterus in the absence of an organic uterine lesion is called dysfunctional uterine bleeding.

Table 18-2 Causes of Abnormal Uterine Bleeding by Age Group

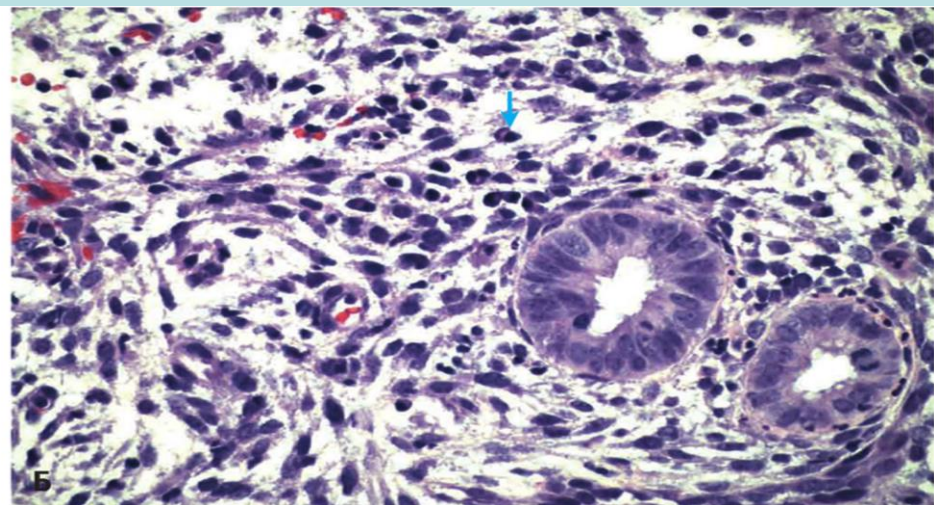
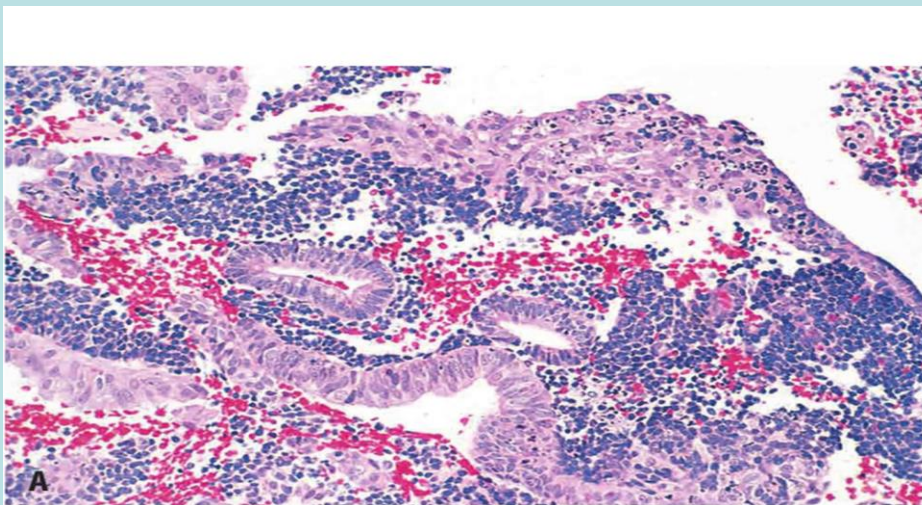
Age Group	Cause(s)
Prepuberty	Precocious puberty (hypothalamic, pituitary, or ovarian origin)
Adolescence	Anovulatory cycle
Reproductive age	Complications of pregnancy (abortion, trophoblastic disease, ectopic pregnancy) Proliferations (leiomyoma, adenomyosis, polyps, endometrial hyperplasia, carcinoma) Anovulatory cycle Ovulatory dysfunctional bleeding (e.g., inadequate luteal phase)
Perimenopause	Anovulatory cycle Irregular shedding Proliferations (carcinoma, hyperplasia, polyps)
Postmenopause	Proliferations (carcinoma, hyperplasia, polyps) Endometrial atrophy

BODY OF UTERUS.

ABNORMAL UTERINE BLEEDING

Failure of ovulation. Anovulatory cycles are very common at both ends of reproductive life, due to

- (1) Hypothalamicpituitary axis, adrenal, or thyroid dysfunction;
- (2) Functional ovarian lesions producing excess estrogen;
- (3) Malnutrition, obesity, or debilitating disease;
- (4) Severe physical or emotional stress.



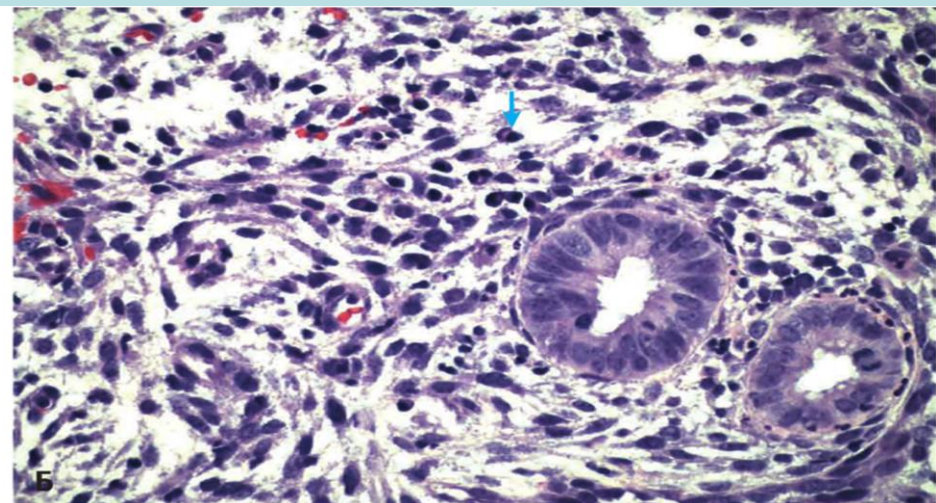
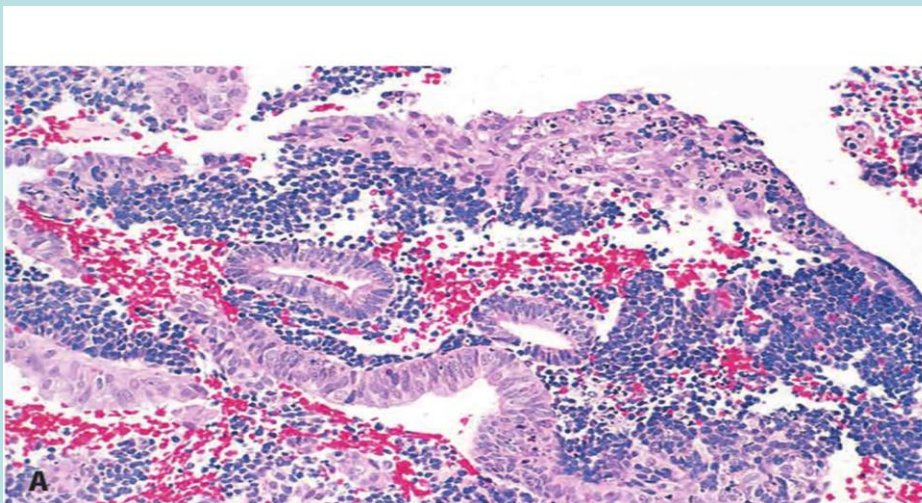
BODY OF UTERUS.

ABNORMAL UTERINE BLEEDING

Inadequate luteal phase. The corpus luteum may fail to mature normally or may regress prematurely leading to a relative lack of progesterone. The endometrium under these circumstances fails to show the expected secretory changes.

Contraceptive-induced bleeding. Older oral contraceptives containing synthetic estrogens and progestin induced a variety of endometrial responses, including decidua-like stroma and inactive, nonsecretory glands. The pills in current use no longer cause these abnormalities.

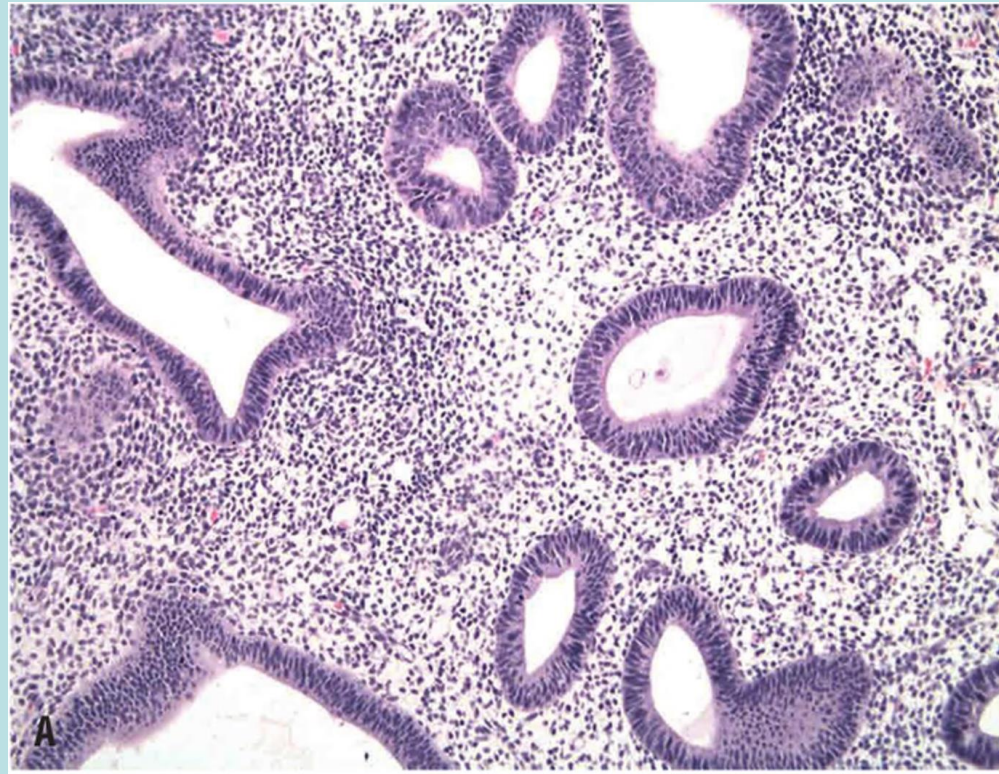
Endomyometrial disorders. Including chronic endometritis, endometrial polyps, and submucosal leiomyomas



BODY OF UTERUS.

Endometrial Hyperplasia

An excess of estrogen relative to progesterin, if sufficiently prolonged or marked, can induce exaggerated endometrial proliferation (hyperplasia), which is an important precursor of endometrial carcinoma.



BODY OF UTERUS.

Endometrial Hyperplasia

Potential causes of estrogen excess include:

- Failure of ovulation (such as is seen in perimenopause)
- Prolonged administration of estrogenic steroids without counterbalancing progestin
- Estrogen producing ovarian lesions (such as polycystic ovary disease and granulosa-theca cell tumors of the ovary)
- Obesity (as adipose tissue converts steroid precursors into estrogens)

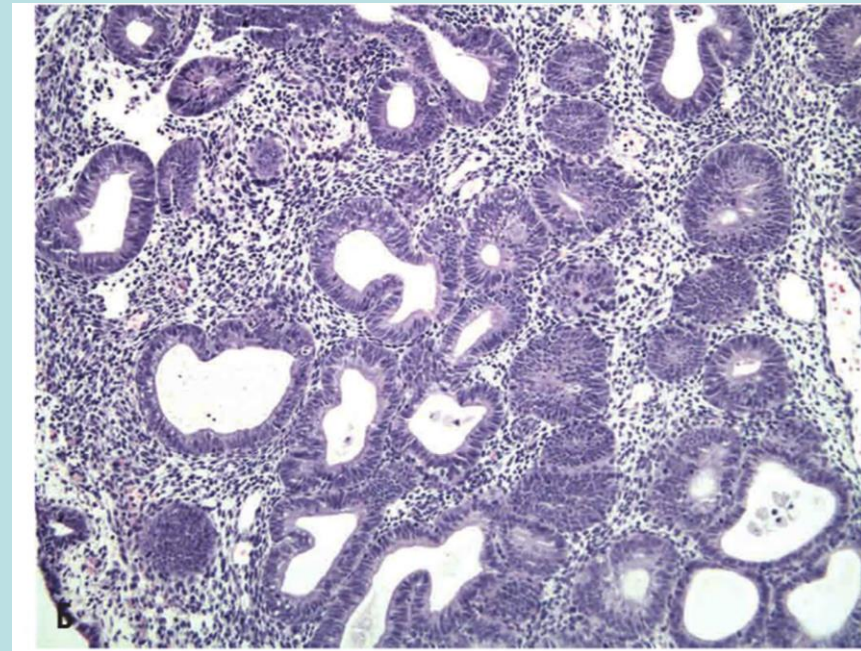
BODY OF UTERUS.

Endometrial Hyperplasia

The risk of developing carcinoma is related to the presence of cellular atypia.

- Complex hyperplasia without cellular atypia carries a low risk (less than 5%) for progression to endometrial carcinoma.

It is characterized by an increase in the number and size of the endometrial glands, their close location and branching.

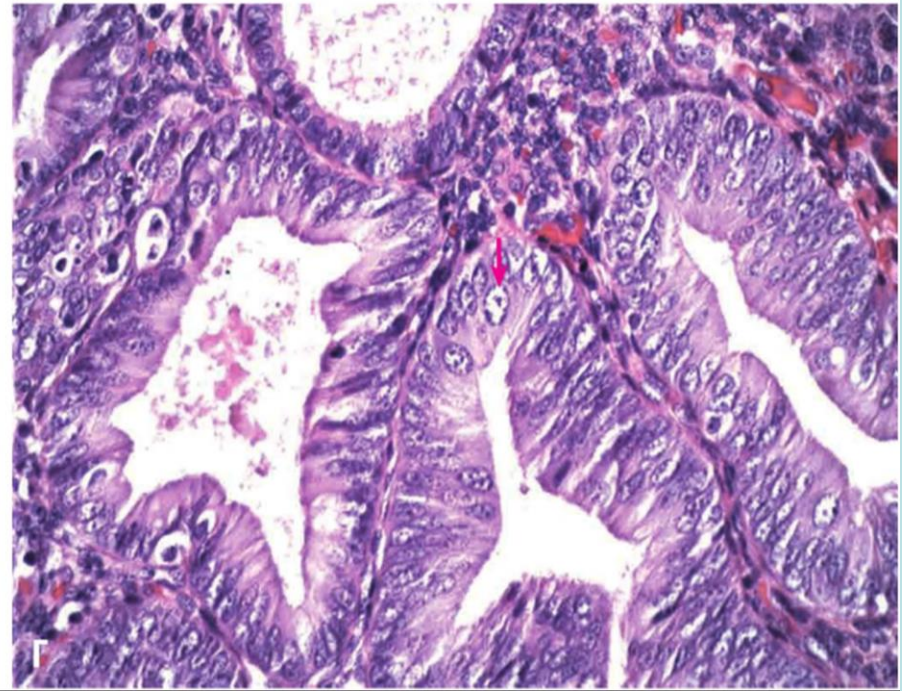
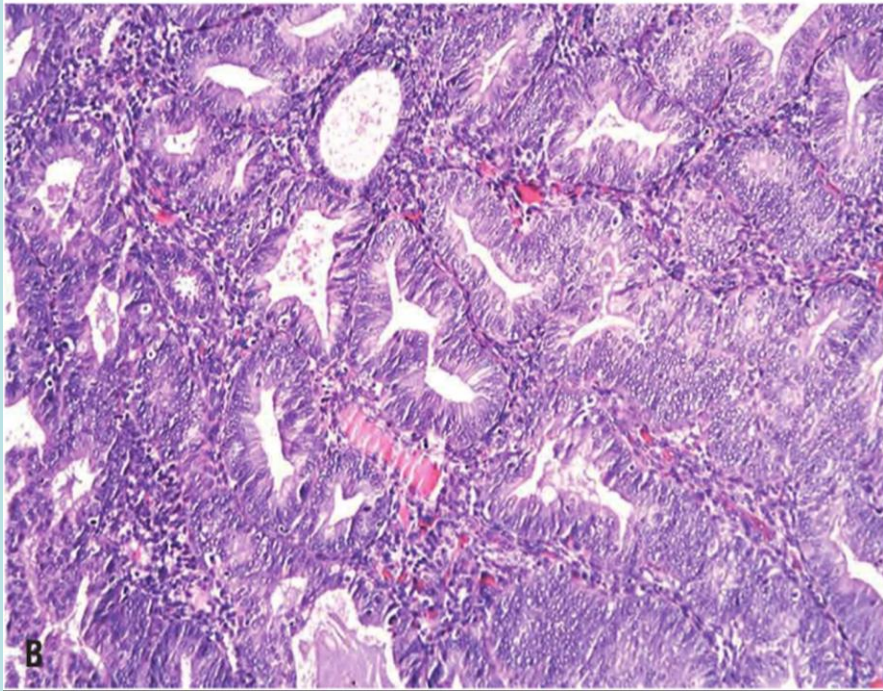


BODY OF UTERUS.

Endometrial Hyperplasia

- Complex hyperplasia with cellular atypia is associated with a much higher risk (20% to 50%).

Has a great morphological similarity with a highly differentiated endometrioid adenocarcinoma. **Currently, with complex endometrial hyperplasia with atypia, a hysterectomy is performed, only young women undergo trial therapy with gestagens, followed by observation. In the absence of regression, the uterus is usually removed.**



BODY OF UTERUS.

Endometrial polyps

Endometrial polyps are formations of various sizes protruding into the uterine cavity. They can be single or multiple, usually have a wide base (with a diameter of 0.5-3.0 cm), but sometimes they can be large and have a stalk. Polyps can be asymptomatic or cause abnormal uterine bleeding (menstrual, menometrorrhagic, or postmenstrual)



BODY OF UTERUS.

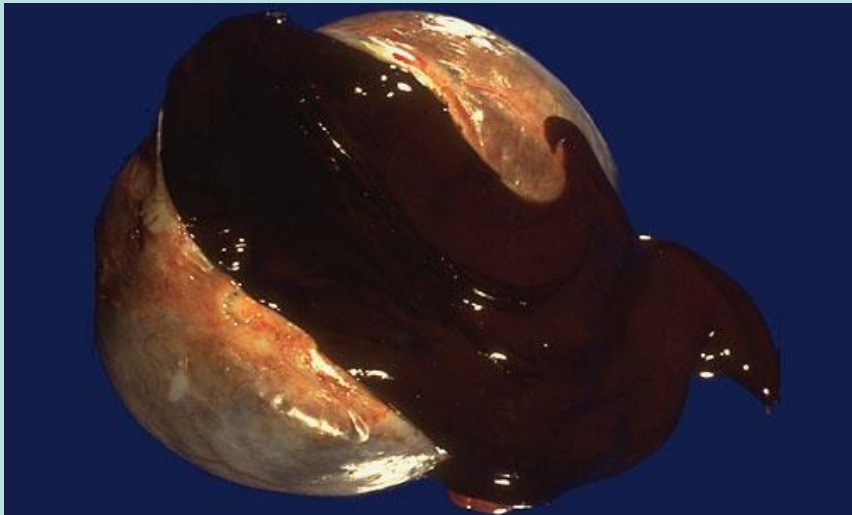
ENDOMETRIOSIS

Endometriosis is defined by the presence of endometrial glands and stroma in a location outside the endomyometrium.

It frequently is multifocal and often involves pelvic structures

- Ovaries
- Pouch of Douglas
- Uterine ligaments
- Fallopian tubes
- Rectovaginal septum.

Less frequently, distant areas of the peritoneal cavity or periumbilical tissues are involved. Uncommonly, distant sites such as lymph nodes, lungs, and even heart, skeletal muscle, or bone are affected.

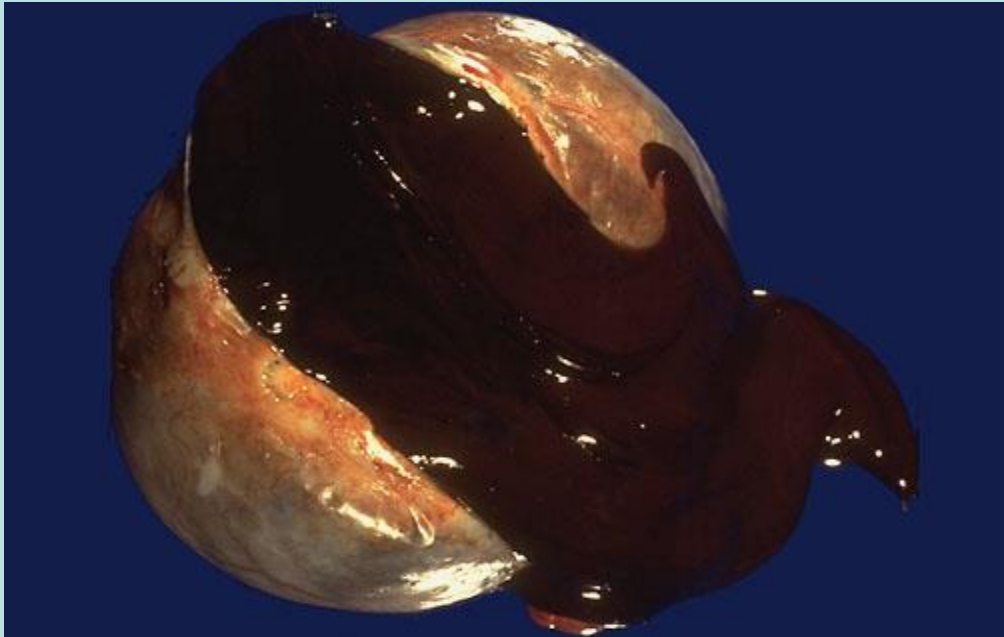


BODY OF UTERUS.

ENDOMETRIOSIS

Endometriosis is of great clinical importance. It is often the cause of infertility, dysmenorrhea, and pelvic pain syndrome.

Endometriosis usually affects: women of reproductive age, especially 20-40 years. The incidence of endometriosis is ~ 10%.



BODY OF UTERUS.

ENDOMETRIOSIS

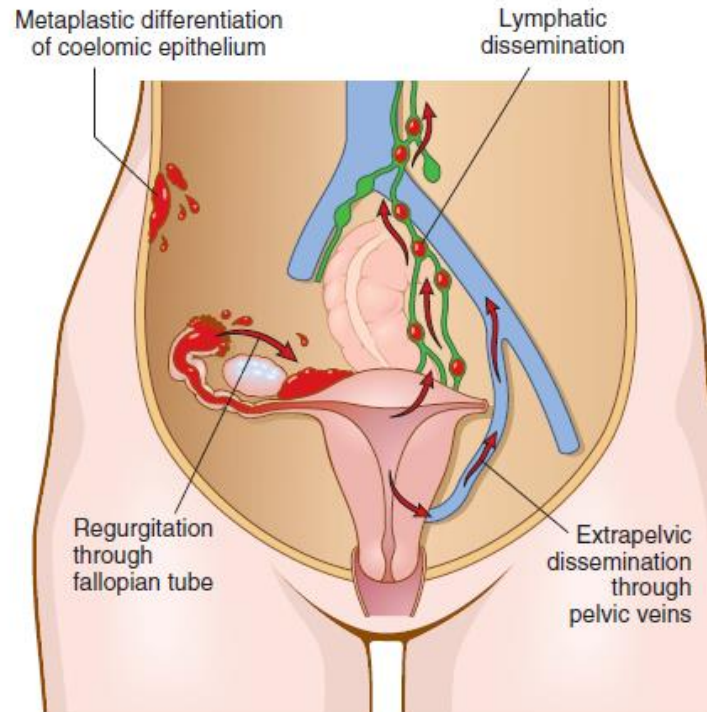
Three hypotheses have been put forth to explain the origin of these lesions.

The regurgitation theory - proposes that menstrual backflow through the fallopian tubes leads to implantation.

The metaplastic theory - posits endometrial differentiation of coelomic epithelium (from which endometrium originates) as the source.

These two theories cannot, however, explain lesions in the lymph nodes, skeletal muscle, or lungs.

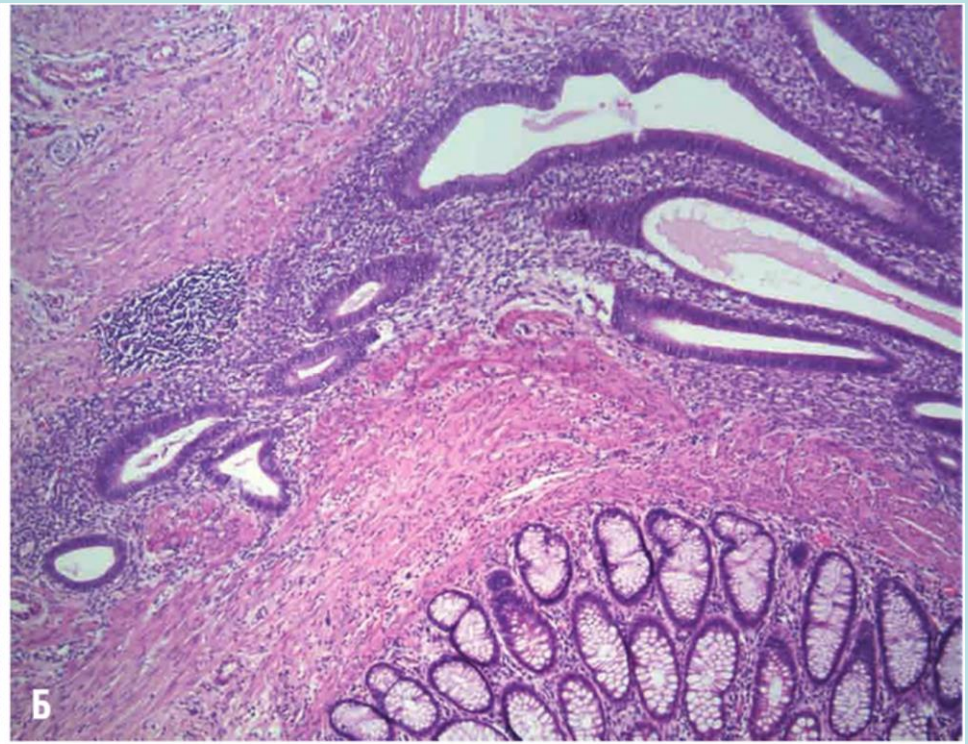
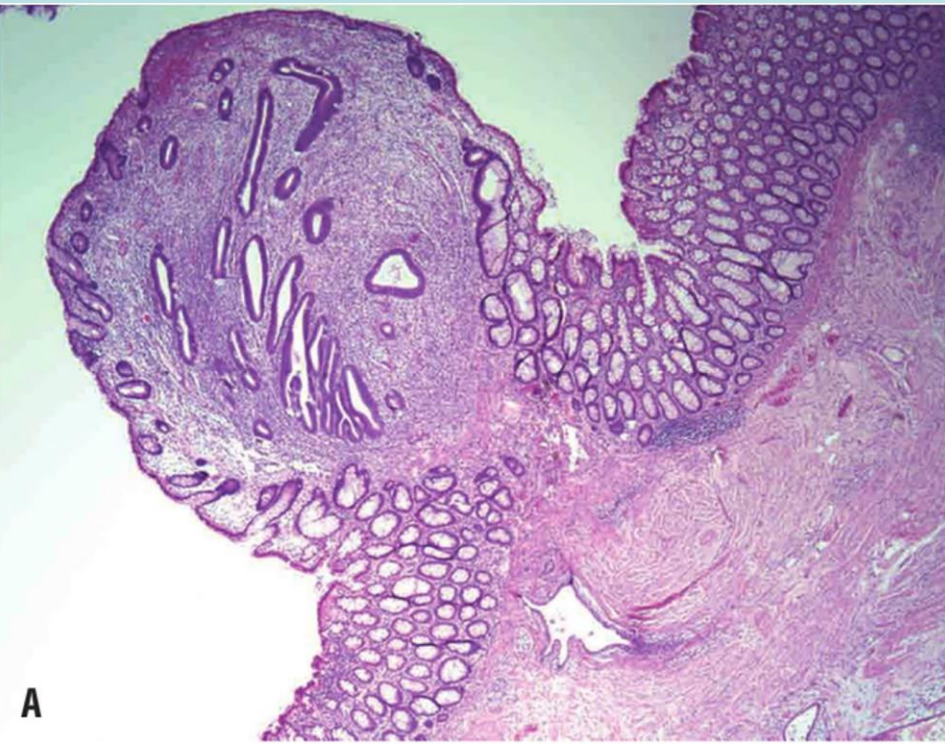
Hence, the vascular or lymphatic dissemination theory has been invoked to explain - extrapelvic or intranodal implants.



BODY OF UTERUS.

ENDOMETRIOSIS

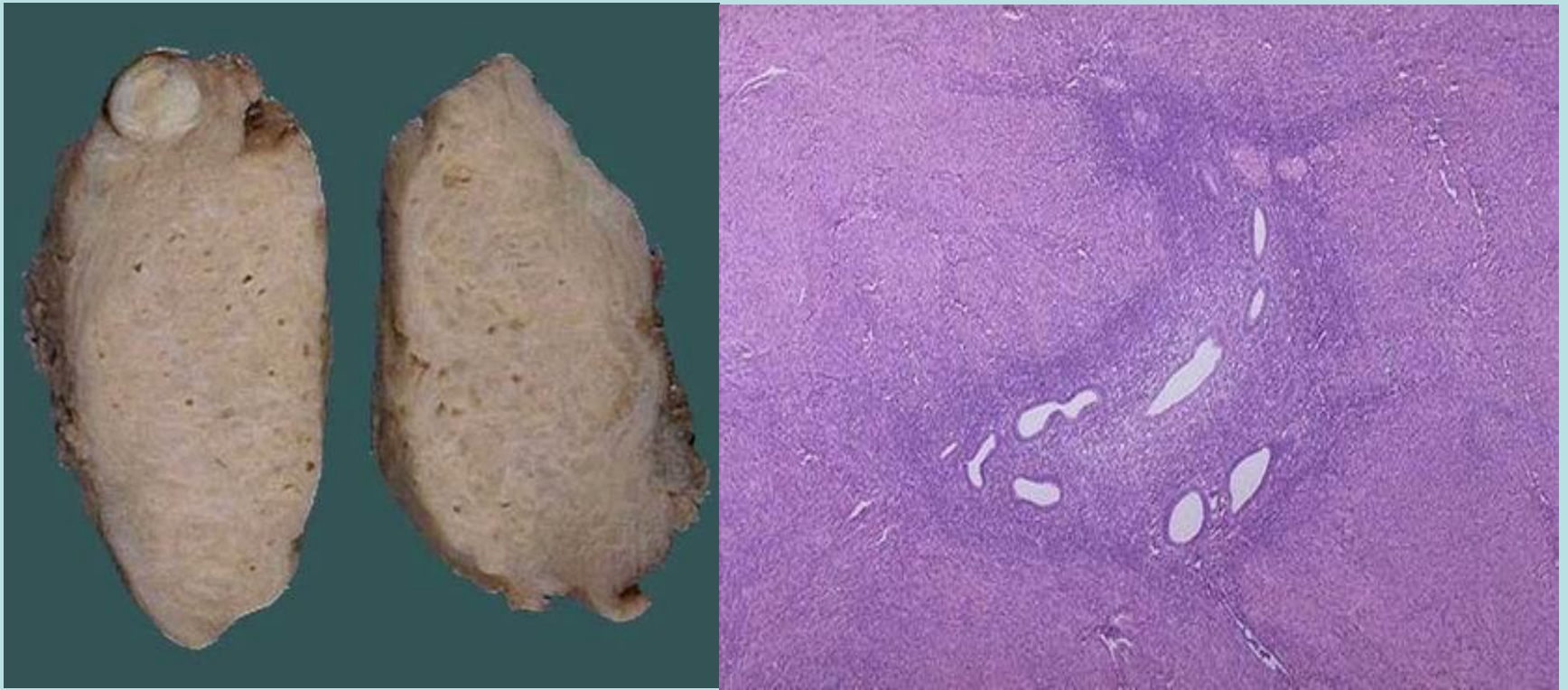
Clinical signs. Symptoms are usually represented by severe dysmenorrhea, dyspareunia, and pelvic pain due to bleeding in the pelvis and the formation of peritoneal adhesions. Pain during bowel movements indicates involvement of the rectal wall, and dysuria is the result of damage to the serous membrane of the bladder. Intestinal symptoms can occur with lesions of the small intestine. Menstrual irregularities are often noted, and 30-40% of women with endometriosis suffer from infertility.



BODY OF UTERUS.

ADENOMYOSIS

Adenomyosis refers to the growth of the basal layer of the endometrium down into the myometrium. Nests of endometrial stroma, glands, or both, are found deep in the myometrium interposed between the muscle bundles. Marked adenomyosis may produce menorrhagia, dysmenorrhea, and pelvic pain before the onset of menstruation.



BODY OF UTERUS.

Endometrial Carcinoma

Endometrial Carcinoma — In the United States and many other Western countries, endometrial carcinoma is the most frequent cancer occurring in the female genital tract. It generally appears between the ages of 55 and 65 years and is uncommon before age 40.



BODY OF UTERUS.

Endometrial Carcinoma

Endometrial carcinomas - comprise two distinct kinds of cancer: **endometrioid and serous carcinoma** of the endometrium. These two types are histologically and pathogenetically distinct. **Endometrioid cancers** arise in association with estrogen excess and endometrial hyperplasia in perimenopausal women, whereas **serous cancers** arise in the setting of endometrial atrophy in older postmenopausal women.



BODY OF UTERUS.

Endometrial Carcinoma

The endometrioid type accounts for 80% of cases of endometrial carcinomas. These tumors are designated endometrioid because of their histologic similarity to normal endometrial glands. Risk factors for this type of carcinoma include:

- (1) obesity
- (2) diabetes
- (3) hypertension
- (4) infertility
- (5) exposure to unopposed estrogen.

Many of these risk factors result in increased estrogenic stimulation of the endometrium and are associated with endometrial hyperplasia.



BODY OF UTERUS.

Endometrial Carcinoma

In fact, it is well recognized that prolonged estrogen replacement therapy and estrogen-secreting ovarian tumors increase the risk of endometrioid type of endometrial carcinoma.

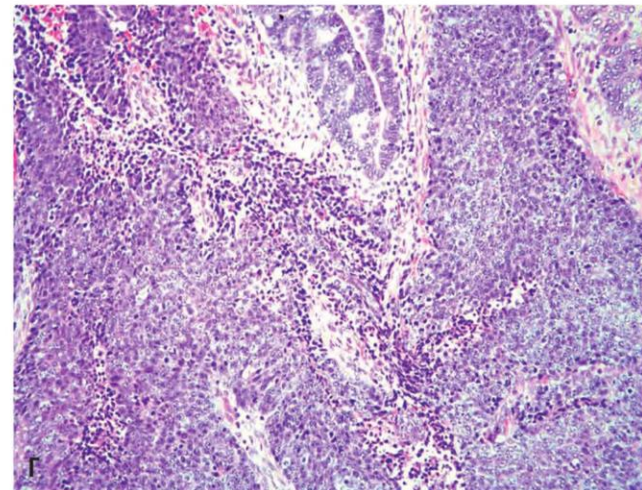
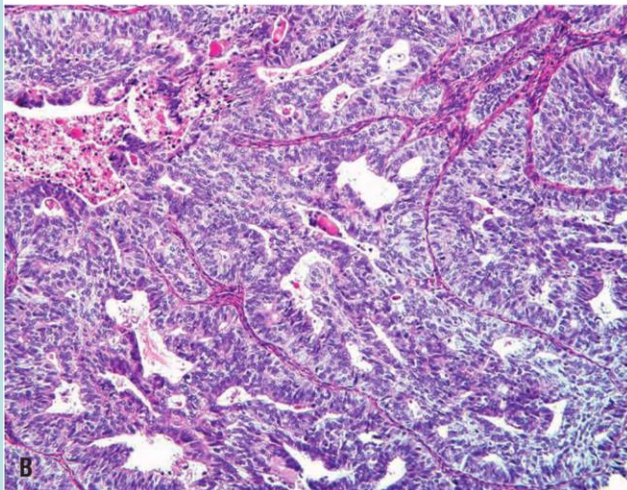
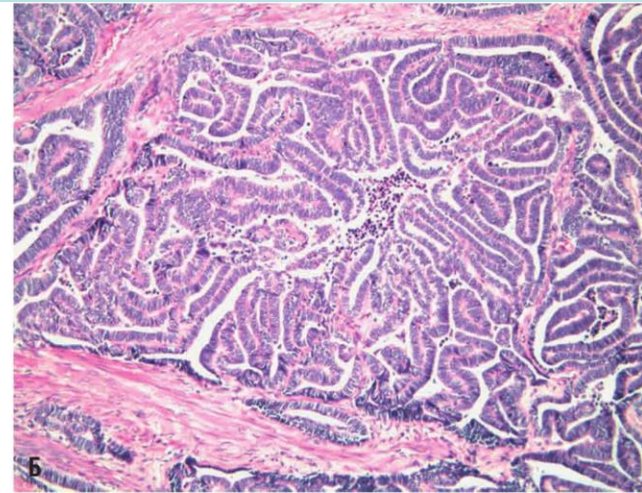
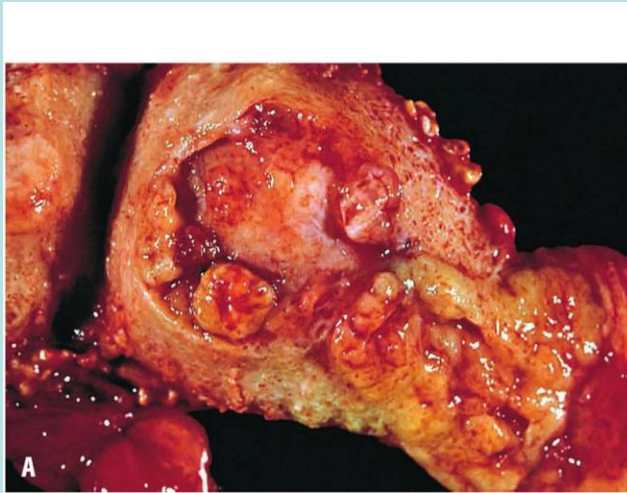
Additionally, breast carcinoma (which also is estrogen dependent) occurs in women with endometrial cancer (and vice versa) more frequently than by chance alone.



BODY OF UTERUS.

Endometrial Carcinoma

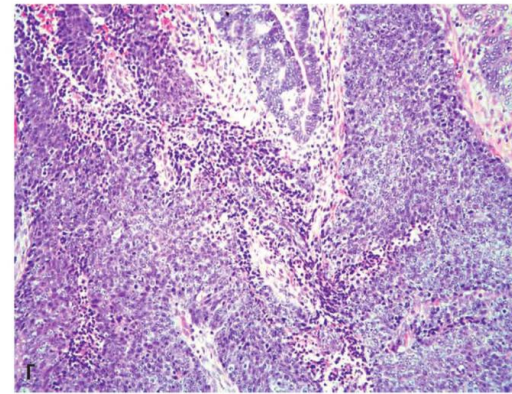
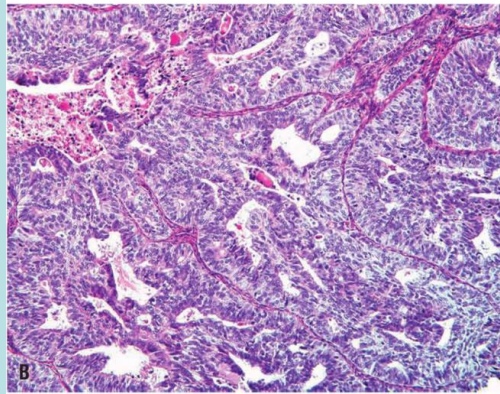
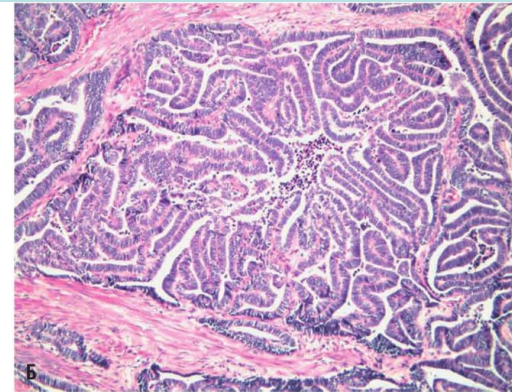
Macroscopically, endometrial carcinoma may have the form of limited formation or polypoid diffuse tumor, affecting the entire surface of the endometrium.



BODY OF UTERUS.

Endometrial Carcinoma

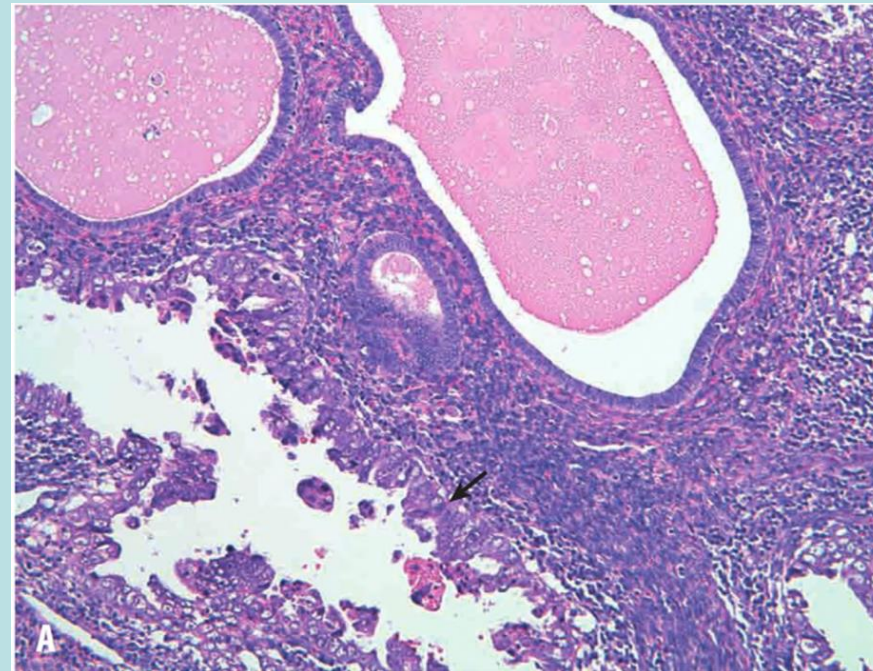
Endometrioid carcinomas closely resemble normal endometrium and may be exophytic or infiltrative. They include a range of histologic types, including those showing mucinous, tubal (ciliated), and squamous (occasionally adenosquamous) differentiation. Tumors originate in the mucosa and may infiltrate the myometrium and enter vascular spaces. They may also metastasize to regional lymph nodes. Endometrioid carcinomas are graded I to III, based on the degree of differentiation



BODY OF UTERUS.

Endometrial Carcinoma

The serous type of endometrial carcinoma is much less common, accounting for roughly 15% of tumors. Nearly all cases have mutations in the TP53 tumor suppressor gene. Serous carcinomas form small tufts and papillae, rather than the glands seen in endometrioid carcinoma, and exhibit much greater cytologic atypia. They behave aggressively and thus are by definition high-grade.



BODY OF UTERUS.

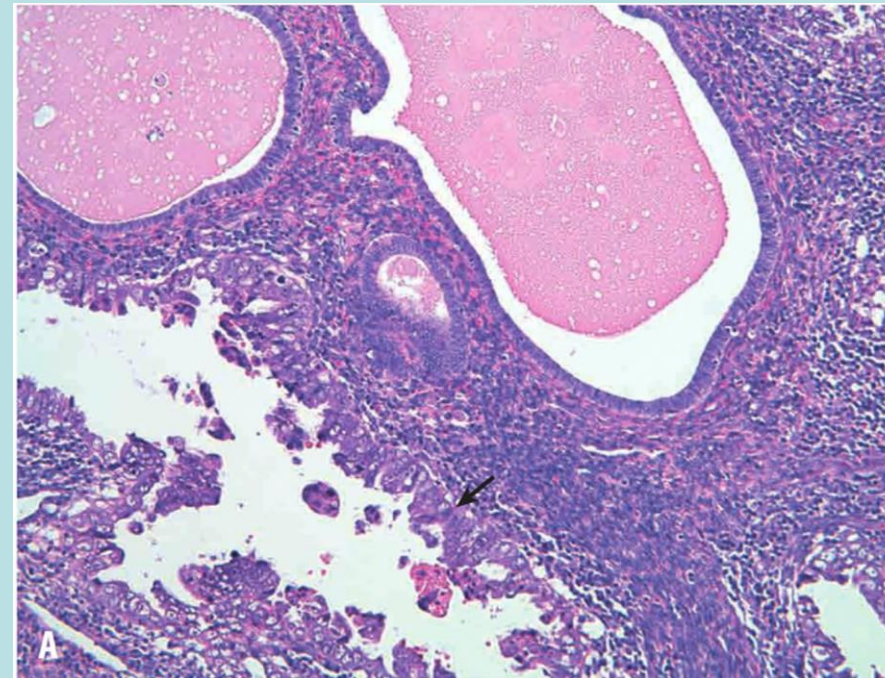
Endometrial Carcinoma

Endometrial carcinomas usually manifest with leukorrhea and irregular bleeding, often in postmenopausal women. With progression, the uterus enlarges and may become affixed to surrounding structures as the cancer infiltrates surrounding tissues.

These tumors usually are slow to metastasize, but if left untreated, eventually disseminate to

regional nodes and more distant sites.

With therapy, the 5-year survival rate for early-stage carcinoma is 90%, but survival drops precipitously in **higher-stage** tumors.



BODY OF UTERUS.

Leiomyoma

They are probably the most common type of neoplasm in women. These are benign tumors from smooth muscle tissue, which can be either single or multiple (more often).

Tumors can be localized in the thickness of the myometrium (intramural),

directly below the endometrium (submucosal, or submucous) or

under the serous membrane of the uterus (subserous).

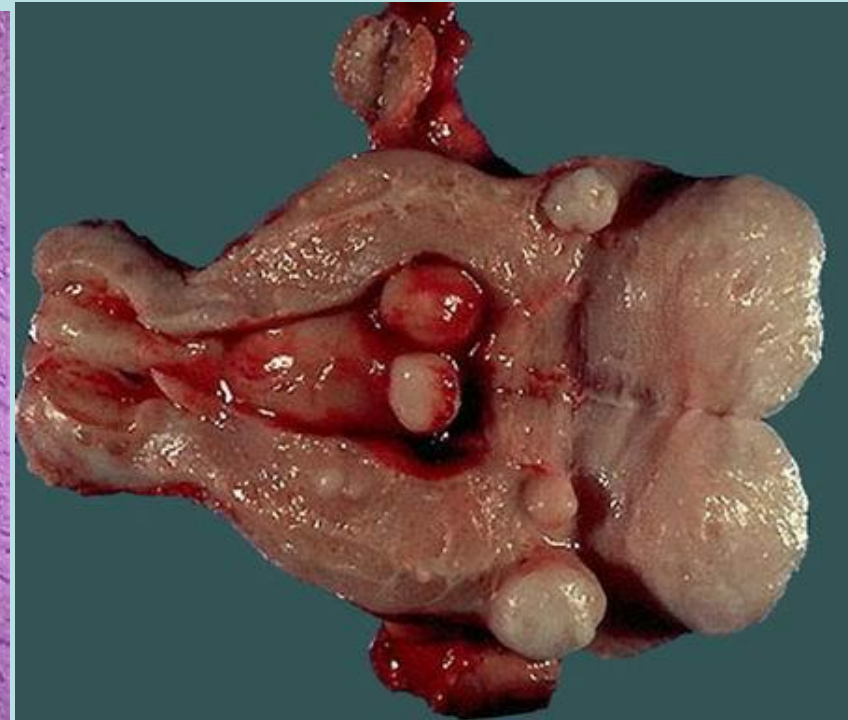
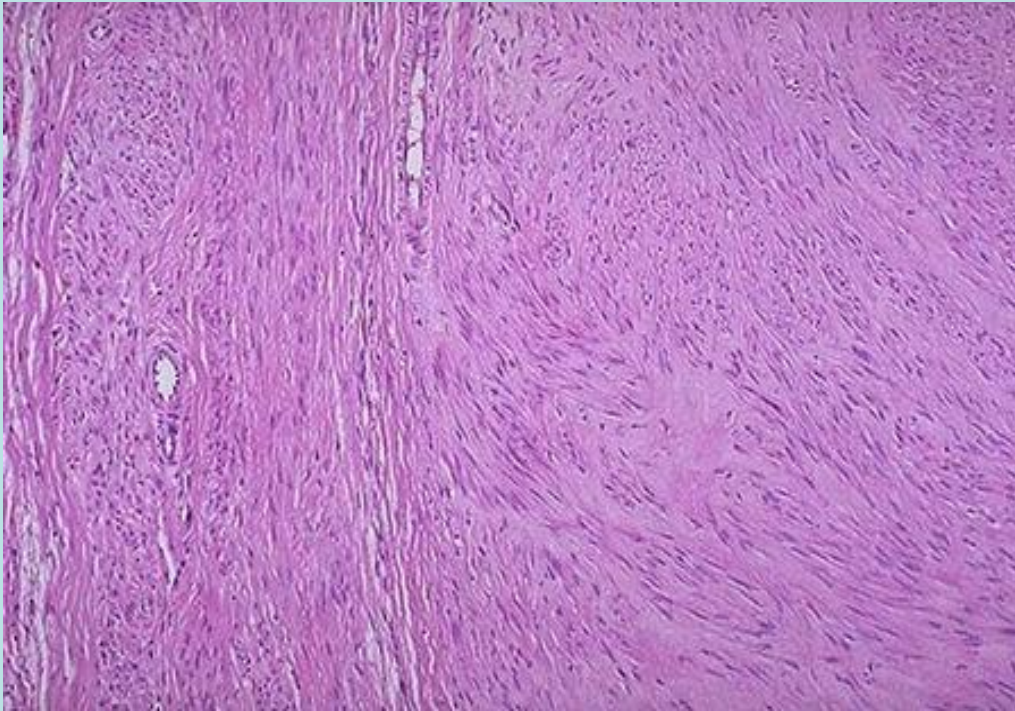


BODY OF UTERUS.

Leiomyoma

On histologic examination, the tumors are characterized by bundles of smooth muscle cells mimicking the appearance of normal myometrium. Foci of fibrosis, calcification, and degenerative softening may be present.

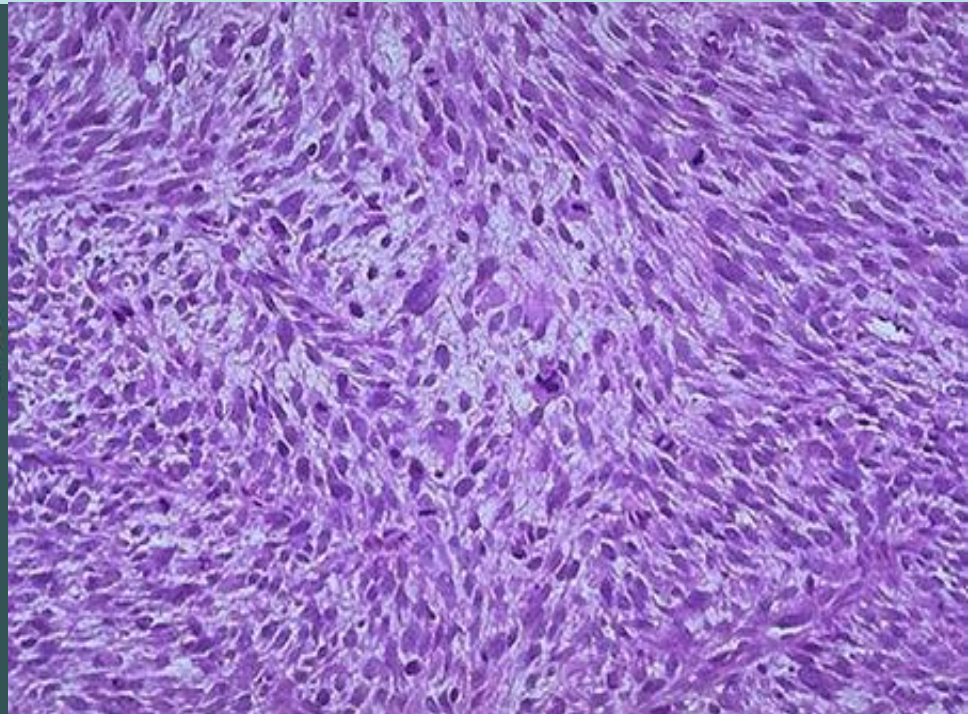
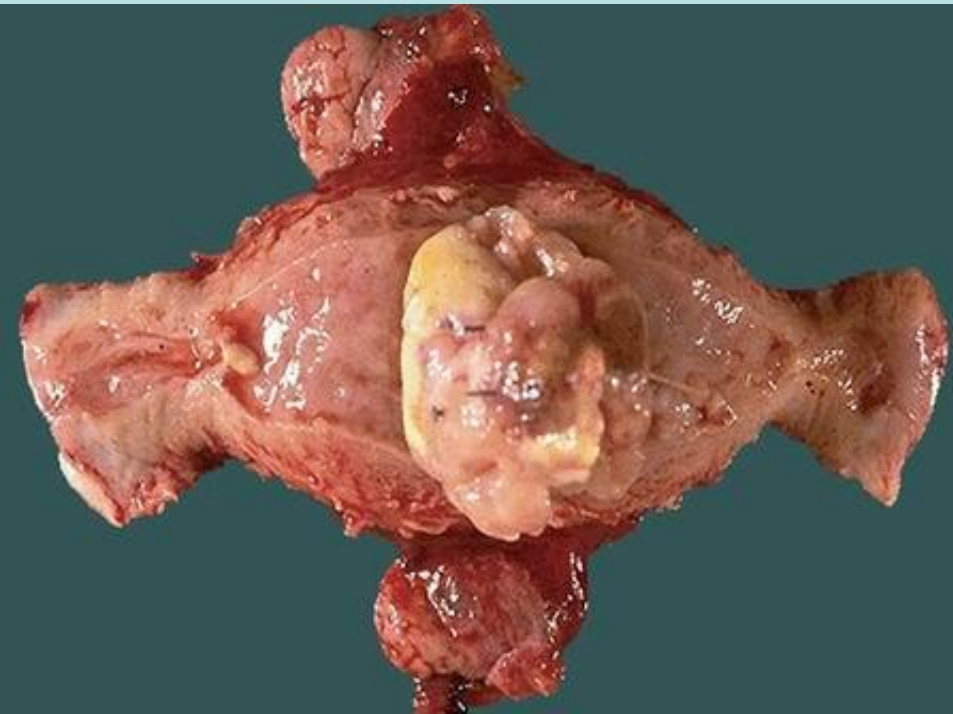
Leiomyomas of the uterus often are asymptomatic, being discovered incidentally on routine pelvic examination. The most frequent presenting sign is menorrhagia, with or without metrorrhagia. Leiomyomas almost never transform into sarcomas, and the presence of multiple lesions does not increase the risk of malignancy.



BODY OF UTERUS.

Leiomyosarcoma

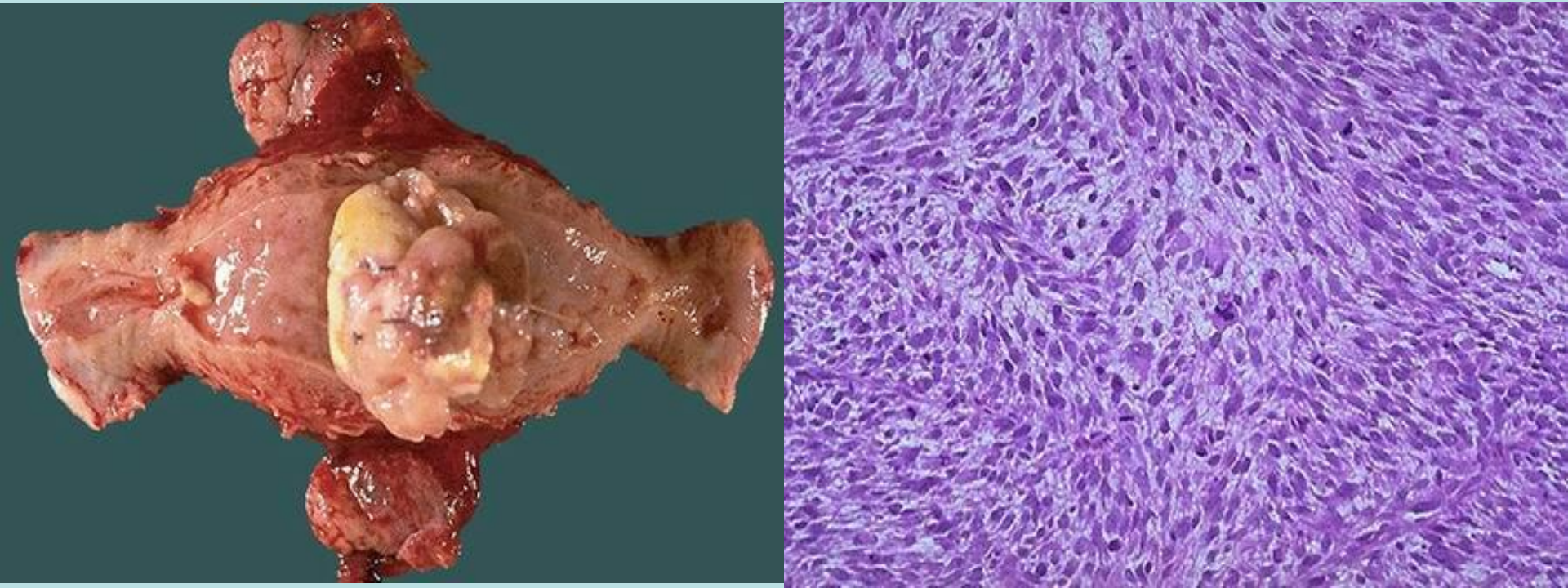
Leiomyosarcomas arise de novo from the mesenchymal cells of the myometrium, not from preexisting leiomyomas. They are almost always solitary and most often occur in postmenopausal women, in contradistinction to leiomyomas, which frequently are multiple and usually arise premenopausally.



BODY OF UTERUS.

Leiomyosarcoma

Leiomyosarcomas typically take the form of soft, hemorrhagic, necrotic masses. The histologic appearance varies widely, from tumors that closely resemble leiomyoma to wildly anaplastic neoplasms. Those well-differentiated tumors that lie at the interface between leiomyoma and leiomyosarcoma are sometimes designated smooth muscle tumors of uncertain malignant potential; in such cases, only time will tell if the tumor's behavior is benign or malignant.



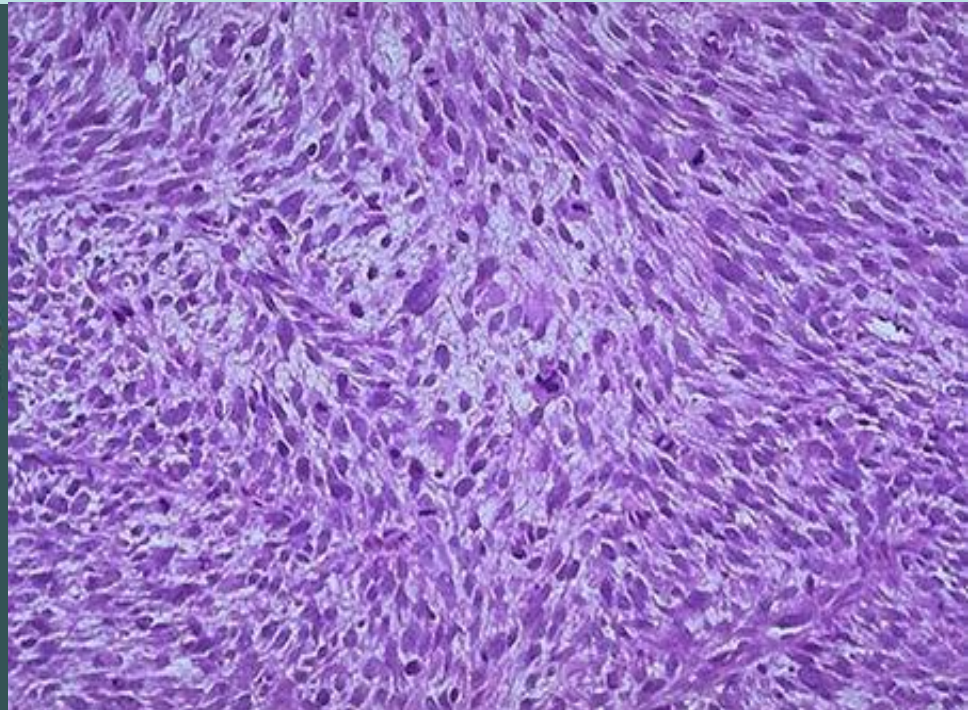
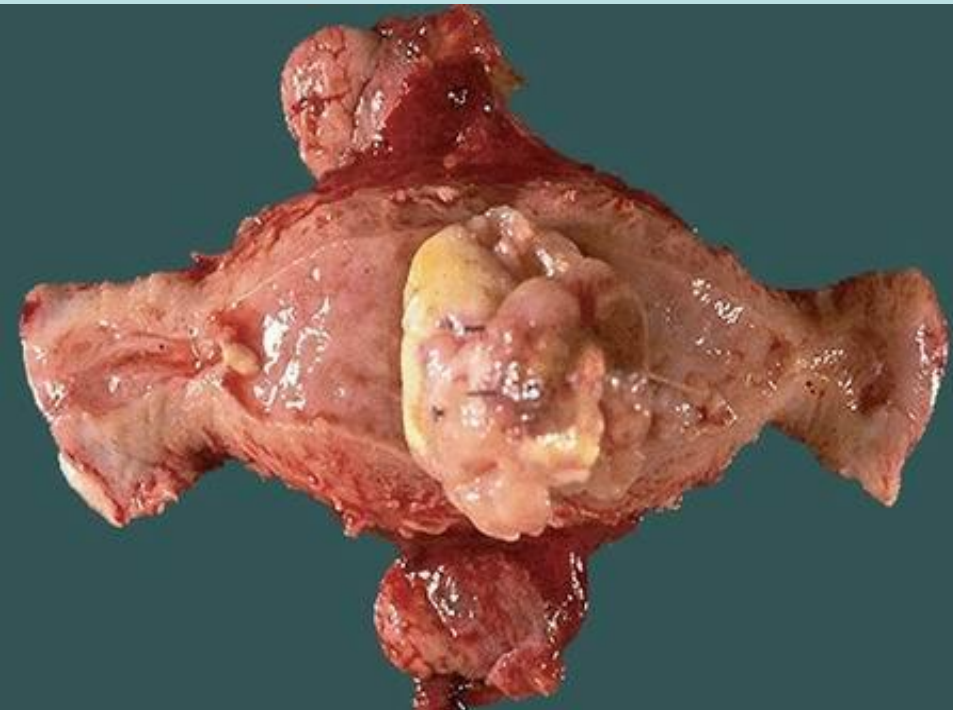
BODY OF UTERUS.

Leiomyosarcoma

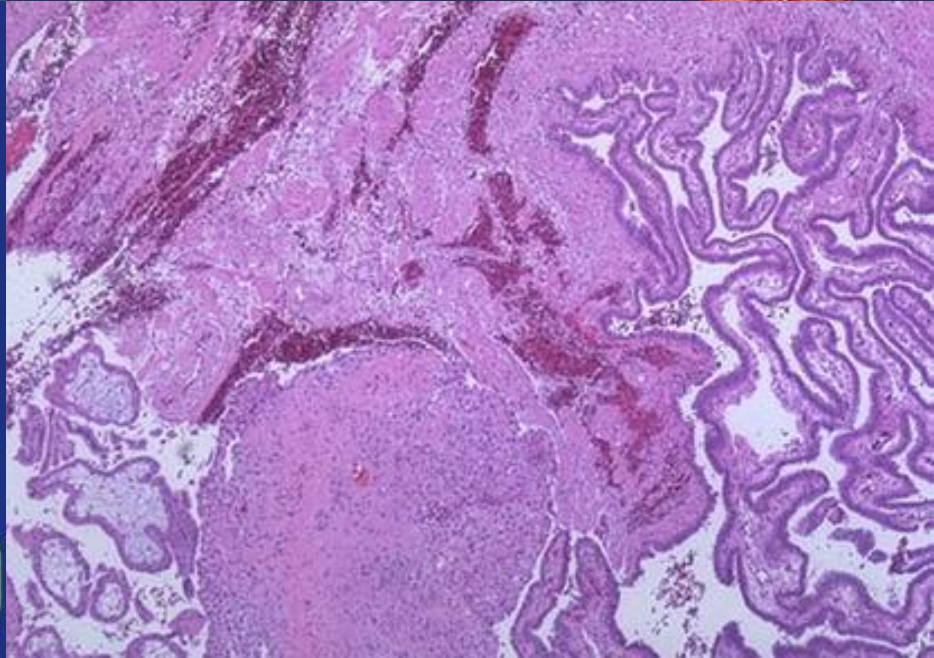
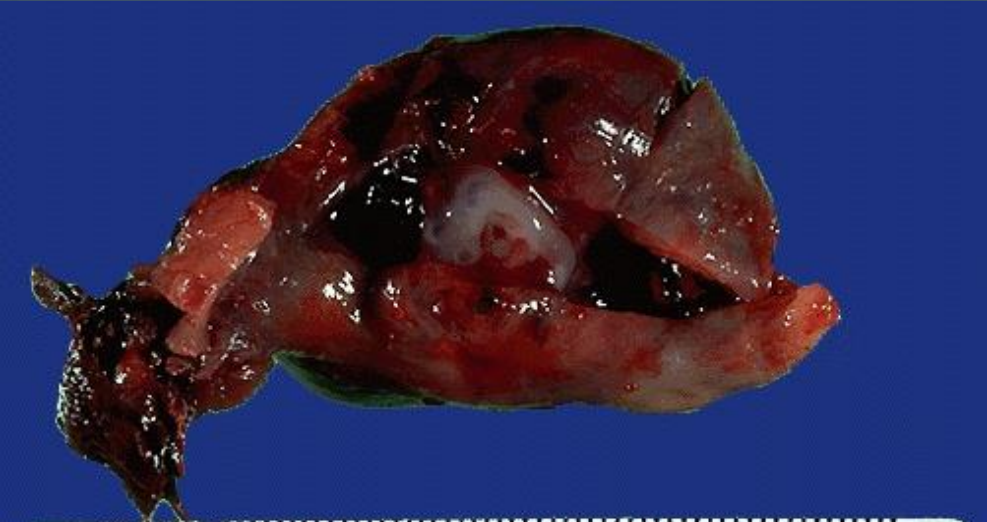
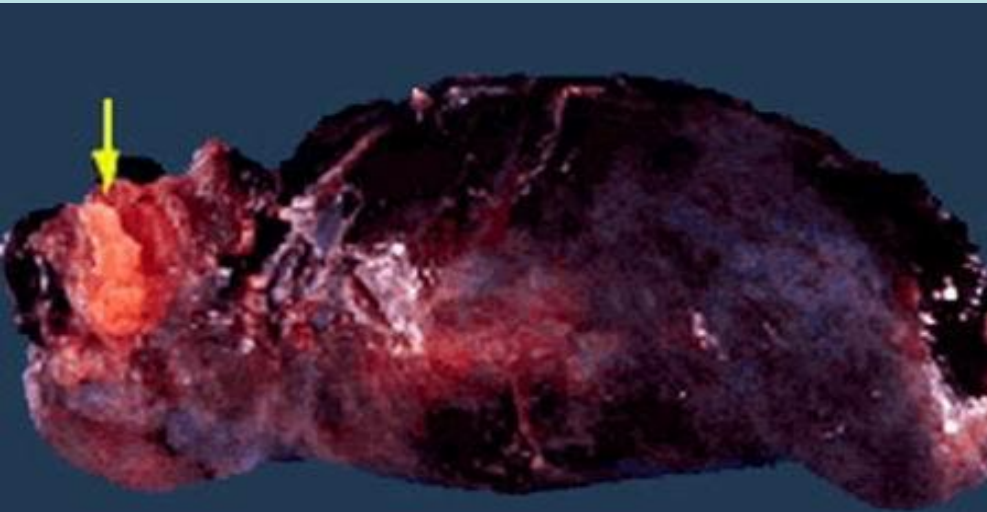
The diagnostic features of overt leiomyosarcoma include tumor necrosis, cytologic atypia, and mitotic activity. Since increased mitotic activity is sometimes seen in benign smooth muscle tumors, particularly in young women, an assessment of all three features is necessary to make a diagnosis of malignancy.

Recurrence after removal is common with these cancers, and many metastasize, typically to the lungs, yielding a 5-year survival rate of about 40%.

The outlook with anaplastic tumors is less favorable than with well-differentiated tumors.



Ectopic pregnancy. Egg implantation occurs outside the uterus.



cm
SPECIMEN 153715-83 4 DATE 9-9-83

WHO ovarian tumor classification

Tumors of the superficial epithelium and stroma

Serous tumors

Benign (cystadenoma)

Borderline (serous borderline tumor)

Malignant (serous adenocarcinoma)

Mucinous tumors of the endocervical and intestinal type

Benign (cystadenoma)

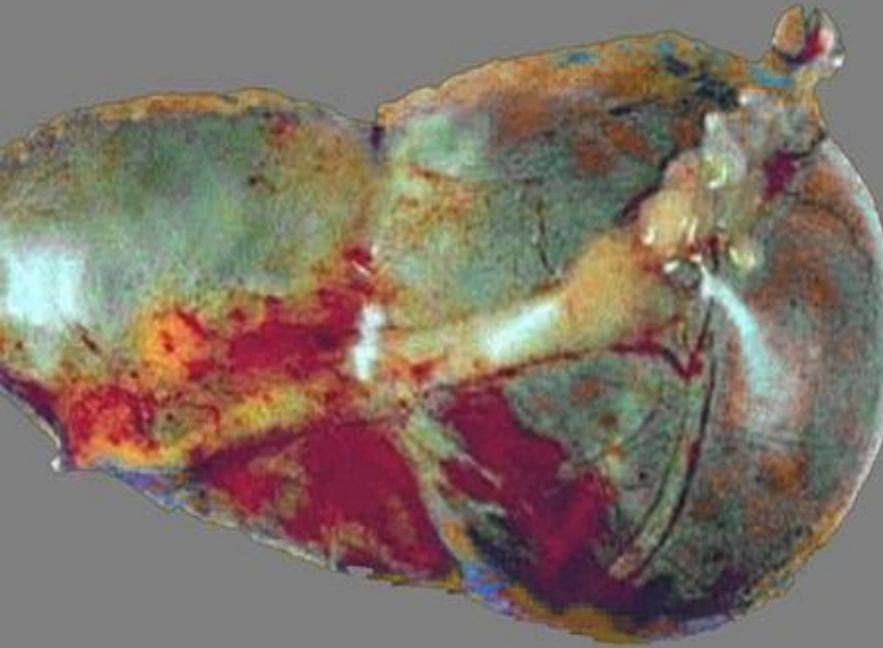
Borderline (mucinous borderline tumor)

Malignant (mucinous adenocarcinoma)

Endometrioid tumors

Benign (cystadenoma)

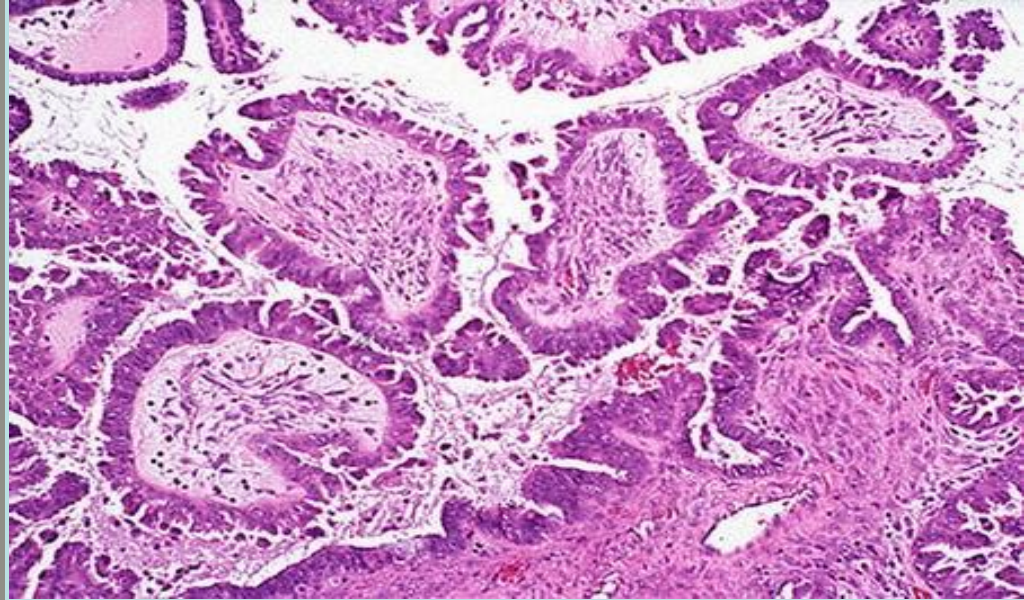
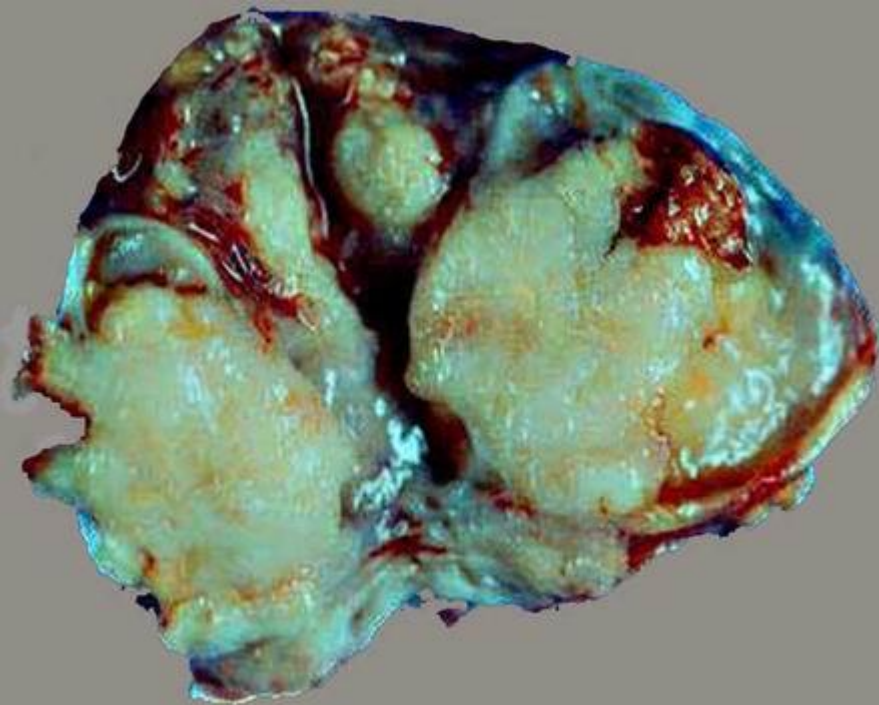
Borderline (endometrioid borderline tumor)



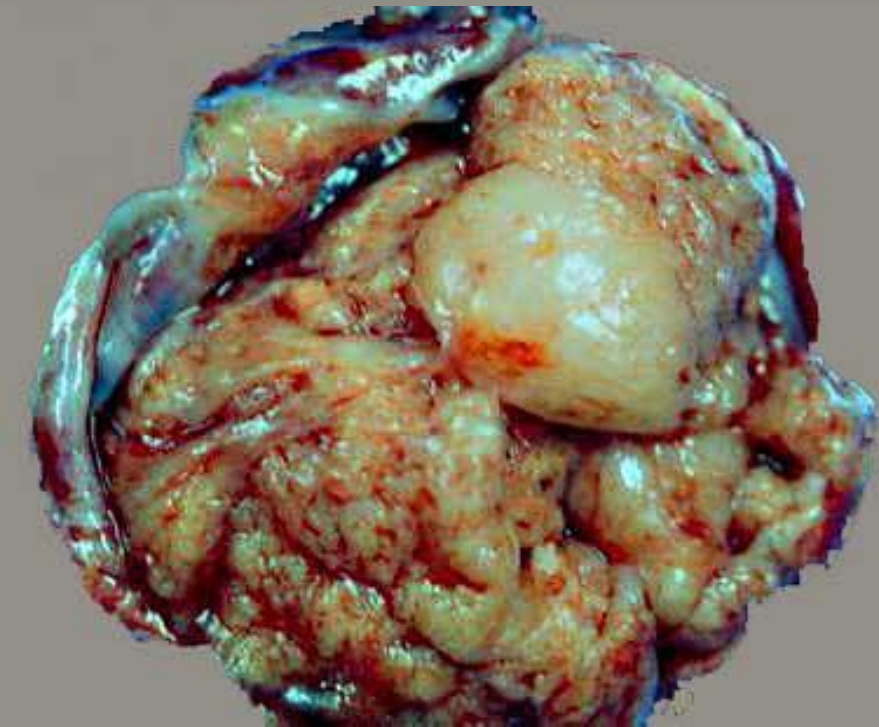
A typical serous tumor during macroscopic examination has the appearance of a cystic mass located in the ovary tissue and having fibrosed walls, on which papillary growths of the epithelium are determined.

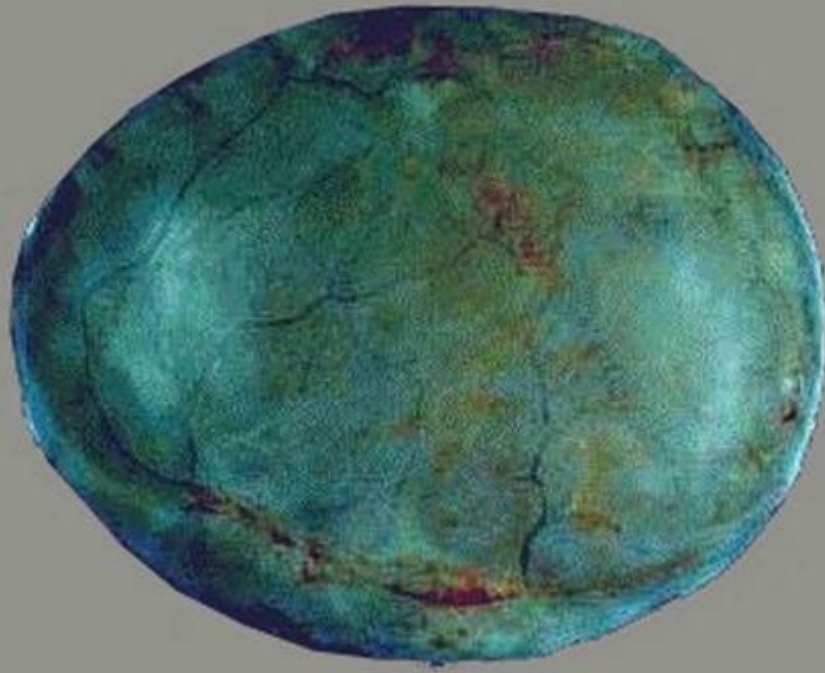


Benign tumors usually have a smooth shiny wall with no signs of thickening of the epithelium or with small papillary outgrowths. Border tumors contain a large number of papillary structures.

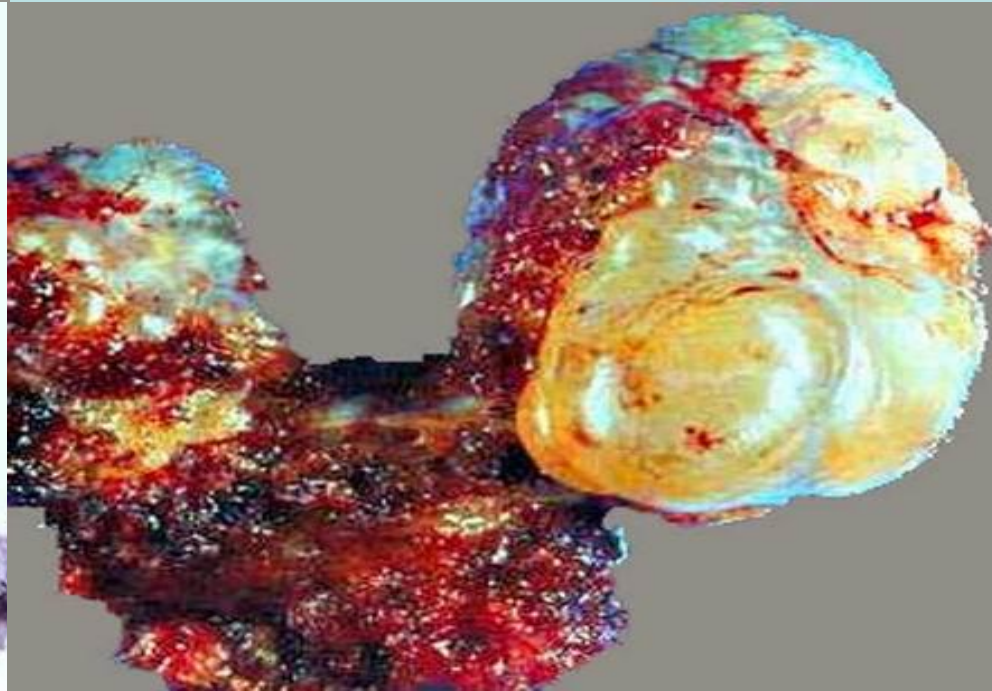


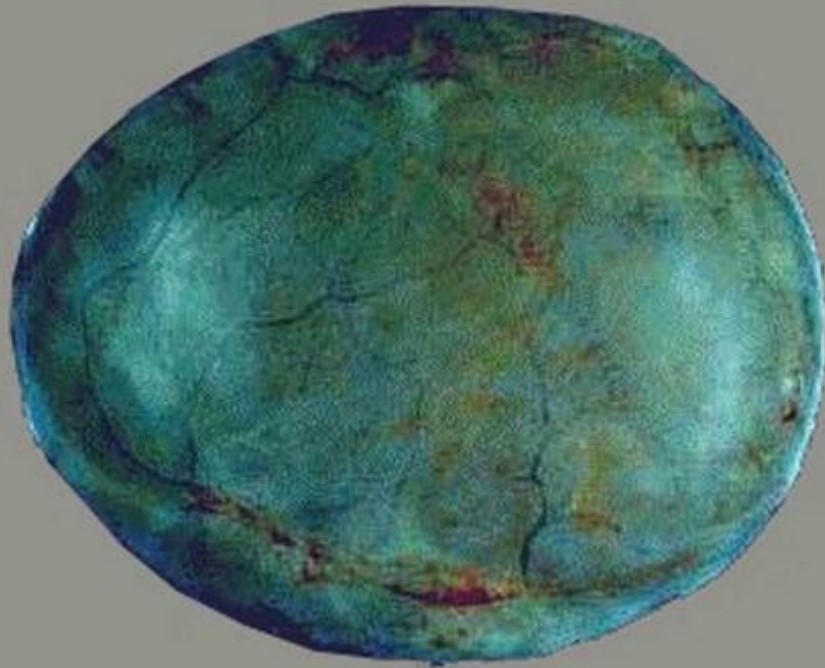
A large number of solid or papillary tumor structures, the heterogeneity of the tumor and the cohesion of the capsule with surrounding tissues or its nodularity are signs of malignancy. These signs are characteristic of serous carcinoma of a high degree of malignancy, which is microscopically distinguished by the complex nature of growth and the infiltration or complete thinning of the underlying stroma.





Macroscopically mucinous tumors differ from serous in several ways. In mucinous tumors, the surface of the ovary is rarely involved and bilateral damage occurs. Mucinous tumors usually have the appearance of large cystic formations; the mass of some reaches 25 kg.





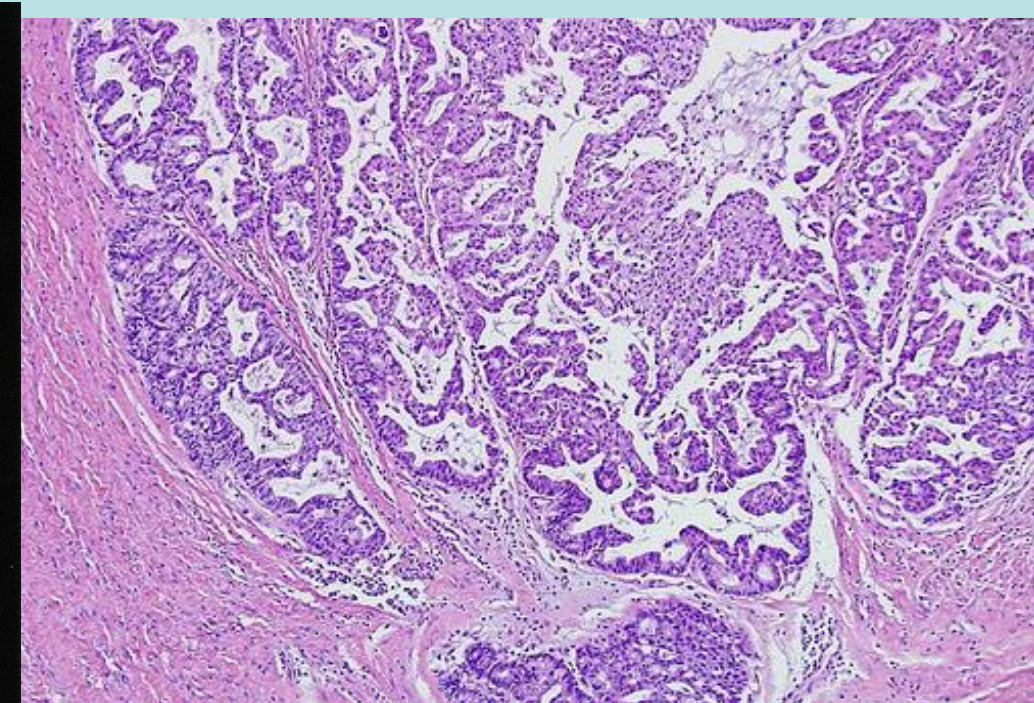
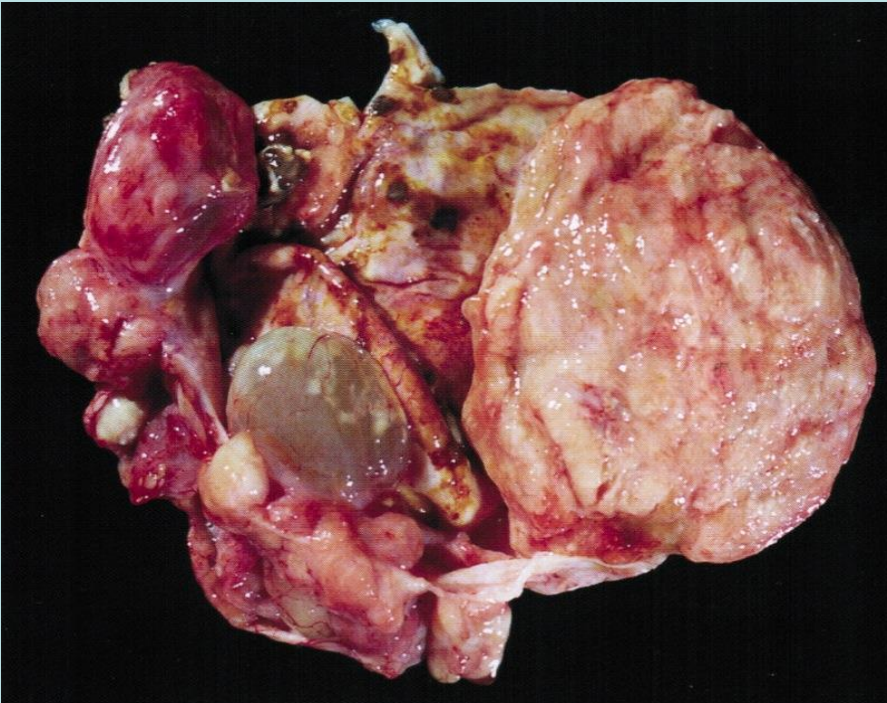
On microscopic examination, these tumors are multi-chamber cystic formations filled with viscous gelatinous contents rich in glycoproteins.

In a histological examination, benign mucinous tumors are characterized by the presence of a lining of high cylindrical epithelial cells without cilia with apically located mucin, resembling epithelium of the cervical canal or intestine.



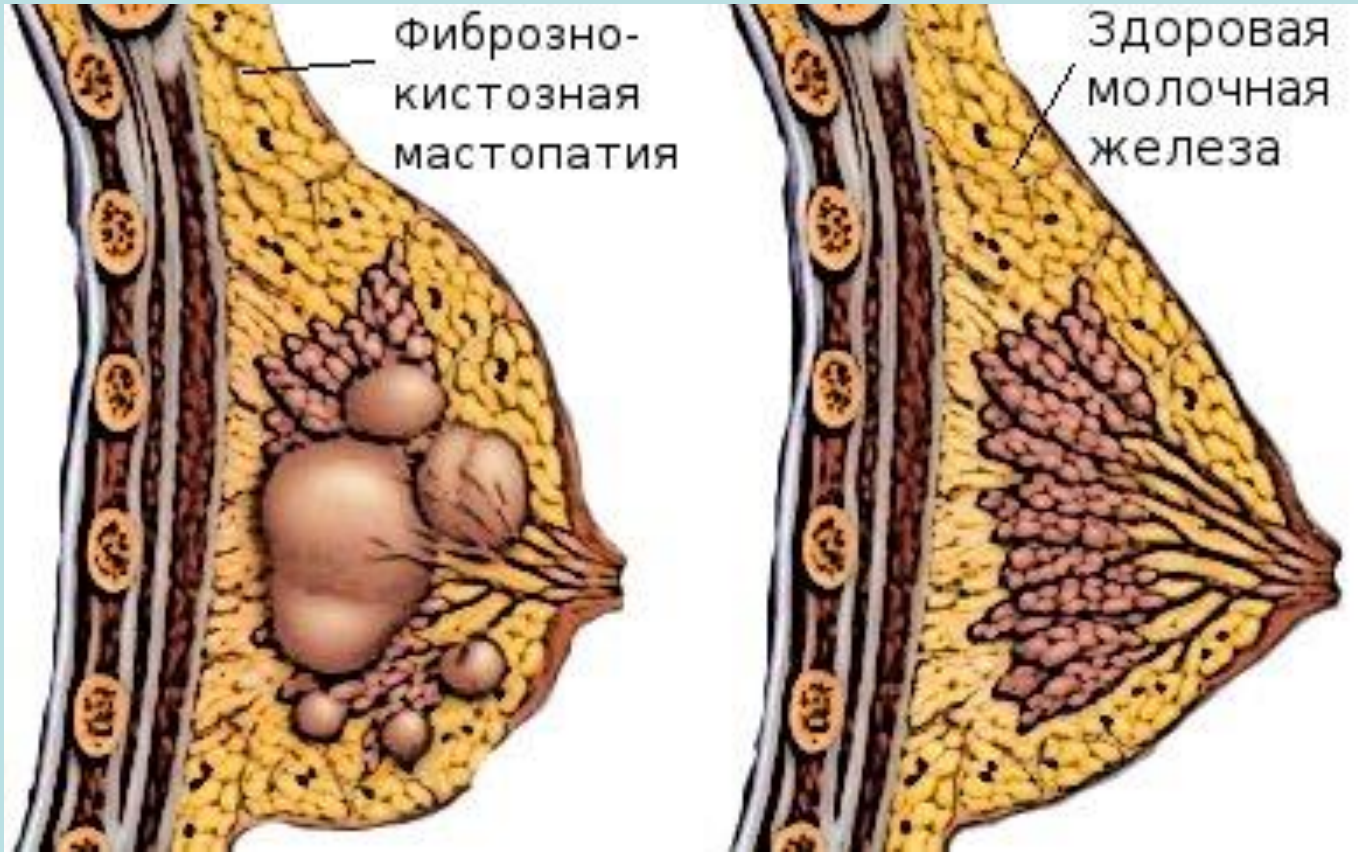


It is believed that tumors with glandular or papillary growth patterns are the precursors of most cystadenocarcinomas. In cystadenocarcinomas, areas of a solid structure, signs of severe atypia of epithelial cells and their pseudostratification, loss of glandular structures and necrosis zone are determined. Cystadenocarcinomas are similar in appearance to colon cancer.



БОЛЕЗНИ МОЛОЧНЫХ ЖЕЛЕЗ

- ДОБРОКАЧЕСТВЕННЫЕ ДИСГОРМОНАЛЬНЫЕ БОЛЕЗНИ. Эти болезни составляют основную группу патологии молочных желез.
- **Дисгормональные болезни молочных желез**
- 1. Фиброзно-кистозная мастопатия
 - непролиферативная форма
 - пролиферативная форма
- 2. Доброкачественные опухоли молочных желез
 - фибroadенома
 - внутрипротоковая папиллома
-



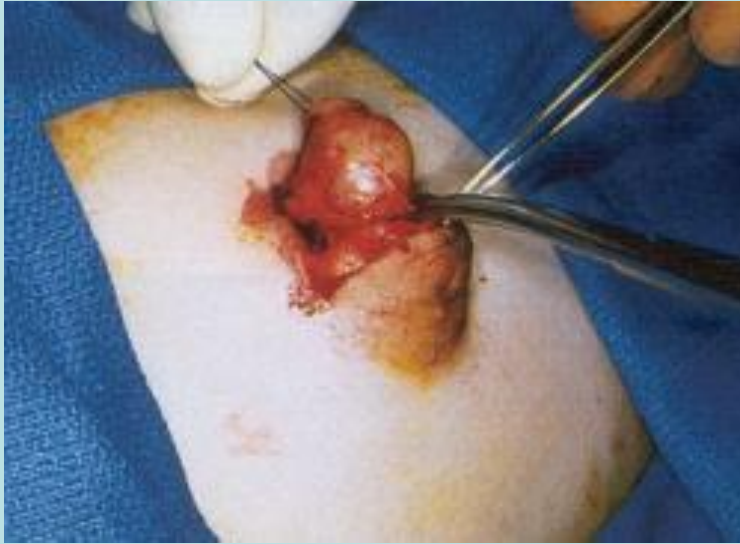
- Фиброзно-кистозная мастопатия — является самой распространенной патологией этого органа. Частота доброкачественной дисплазии в популяции очень велика. По данным некоторых авторов, при исследовании молочных желез у умерших от разных причин женщин в 60—90 % случаев можно обнаружить различные гистологические признаки доброкачественной дисплазии.

- Различают непролиферативную и пролиферативную формы
- При *непролиферативной форме* наблюдаются разрастание фиброзной ткани и кистозное расширение протоков с формированием одного или нескольких узлов, чаще в одной молочной железе. Иногда узлы представлены гиалинизированной соединительной тканью, окружающей атрофичные дольки. При этой форме мастопатии риск развития рака невелик.

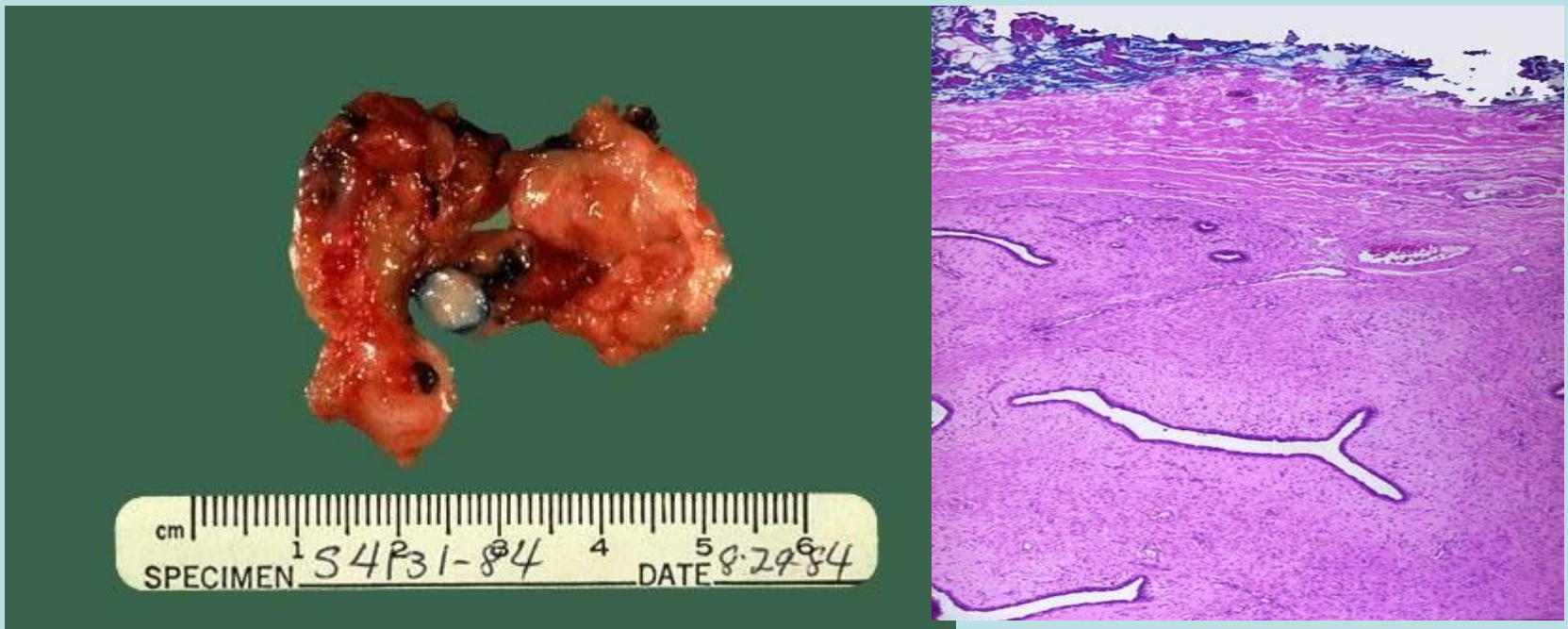
- *Пролиферативная форма* характеризуется пролиферацией долькового или протокового эпителия и миоэпителия, иногда с содружественным разрастанием соединительной ткани. При наличии пролиферативных процессов риск развития рака повышается в 2—5 раз, а при некоторых вариантах — в 14 раз.

- Фиброаденома молочной железы имеет вид инкапсулированного узла волокнистого строения. Микроскопически характеризуется пролиферацией эпителия внутридольковых протоков и разрастанием соединительной ткани. Если соединительная ткань окружает протоки, то фиброаденому называют периканаликулярной, если врастает в стенку протоков — интраканаликулярной. Фиброаденома озлокачивается в 18— 51 % случаев, однако некоторые исследователи вообще отрицают возможность озлокачивания этой опухоли.

фиброаденома молочной железы



Фиброаденома



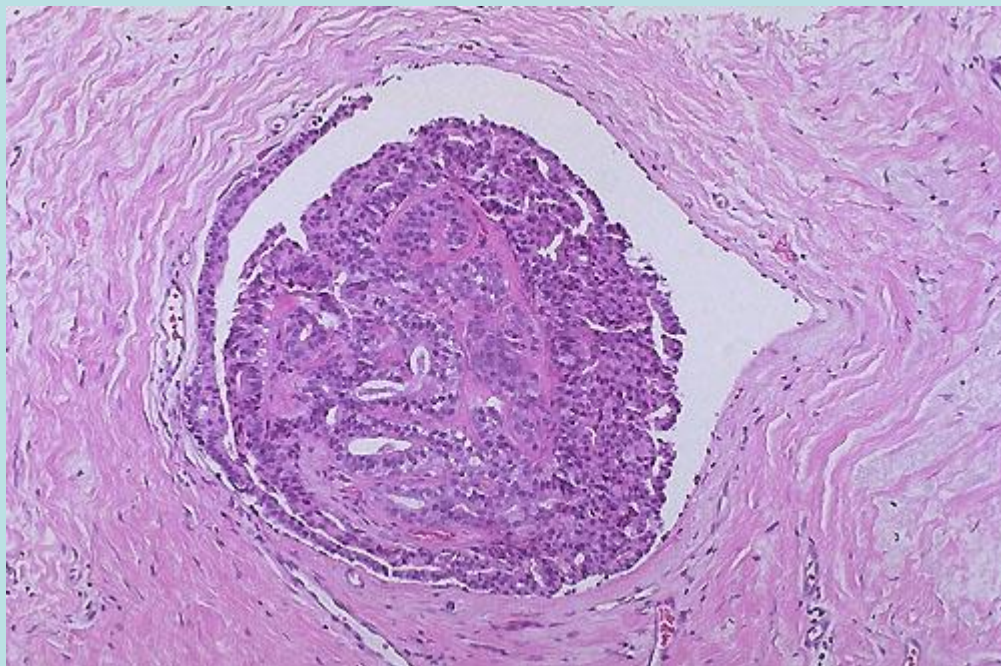
Фиброаденома



- Внутрипротоковая папиллома — доброкачественная опухоль, характеризующаяся образованием сосочковых выростов, покрытых протоковым эпителием, иногда сопровождающаяся кистозным расширением протоков. Одиночные папилломы не имеют тенденции к малигнизации, множественные папилломы увеличивают риск развития рака в 4—6 раз.

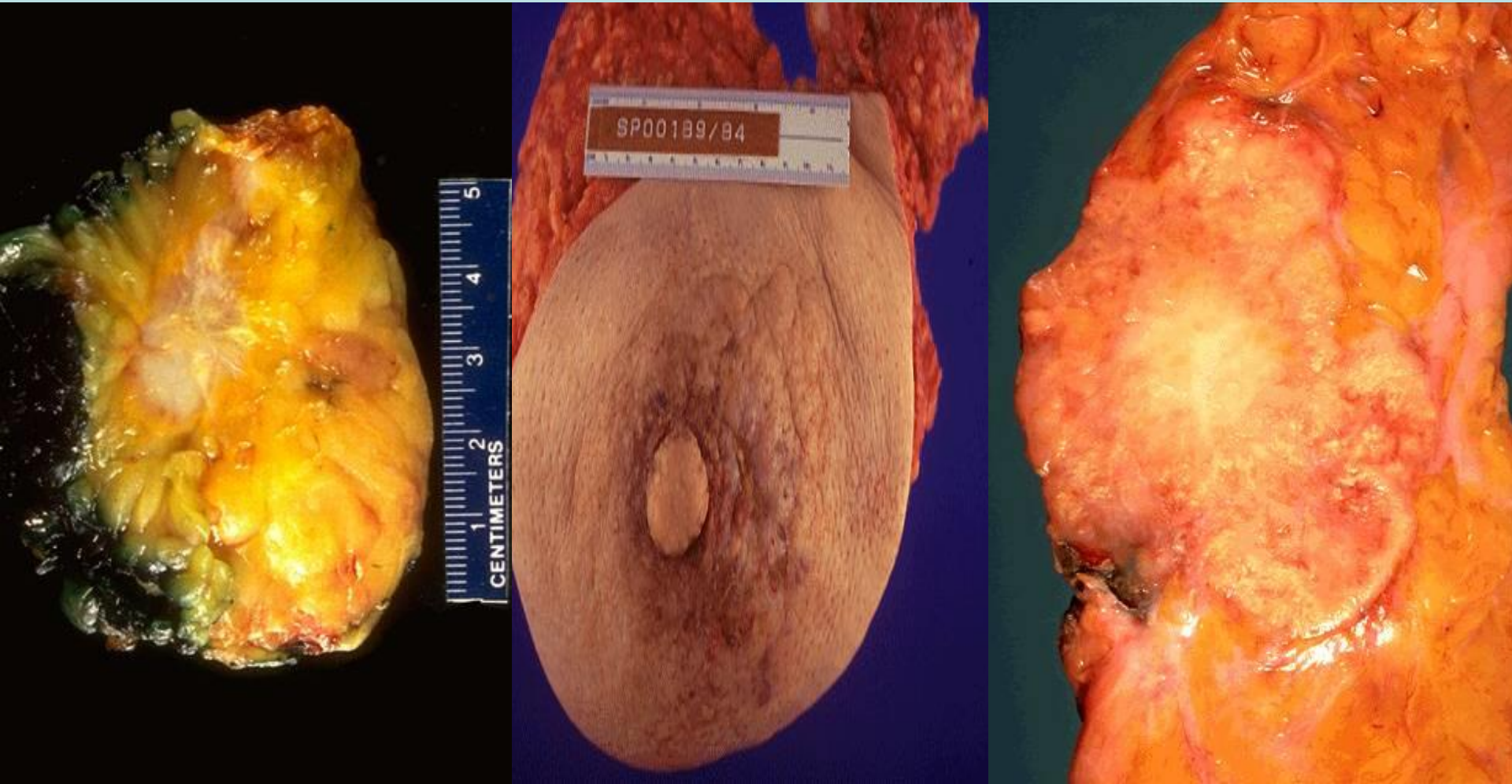


Внутрипротоковая папиллома



- РАК МОЛОЧНОЙ ЖЕЛЕЗЫ. Составляет 1/4 всех случаев рака у женщин. Наиболее высока заболеваемость раком молочной железы в 40—60 лет.
- Риск развития рака молочной железы наиболее высок у женщин с ранней менархой и поздней менопаузой, у нерожавших. К факторам риска относят также позднее начало половой жизни, поздние первые роды (после 26 лет).

РАК МОЛОЧНОЙ ЖЕЛЕЗЫ



- Напротив, ранняя беременность и роды, полноценное кормление грудью предохраняют женщин от развития рака молочной железы (следует, однако, помнить, что при ранней беременности значительно повышается риск развития рака шейки матки). Существует мнение, что риск развития рака молочной железы повышается при кормлении грудью более года, после перенесенных послеродовых маститов, травм молочной железы, однако это мнение поддерживается не всеми исследователями.

- Повышена частота рака молочной железы у женщин с ожирением. Установлено, что в организме тучных женщин превращение эндогенных андрогенов (андростендиола) в эстриол происходит в 15—20 раз быстрее, чем у худых. Такая же закономерность отмечается при приеме жирной пищи.

- При раке молочной железы велика роль наследственности. Вероятность развития рака молочной железы у женщины составляет 30—50 %, если у ее матери или сестры аналогичный рак развился до наступления менопаузы. При раке, развившемся в постменопаузе, такой зависимости нет.

- Анализ факторов риска развития рака молочной железы показывает их сходство с факторами риска рака тела матки, что указывает на роль гормональных нарушений, главным образом — на дисбаланс эстрогенов. Основными предраковыми заболеваниями являются описанные выше доброкачественные изменения молочной железы.

Классификация.

Рак молочной железы

1. Макроскопические формы

- узловой
- диффузный
- рак соска и соскового поля (болезнь Педжета)

2. Гистологические формы

- неинфильтрирующий рак
внутридольковый
внутрипротоковый
- инфильтрирующий рак -
болезнь Педжета

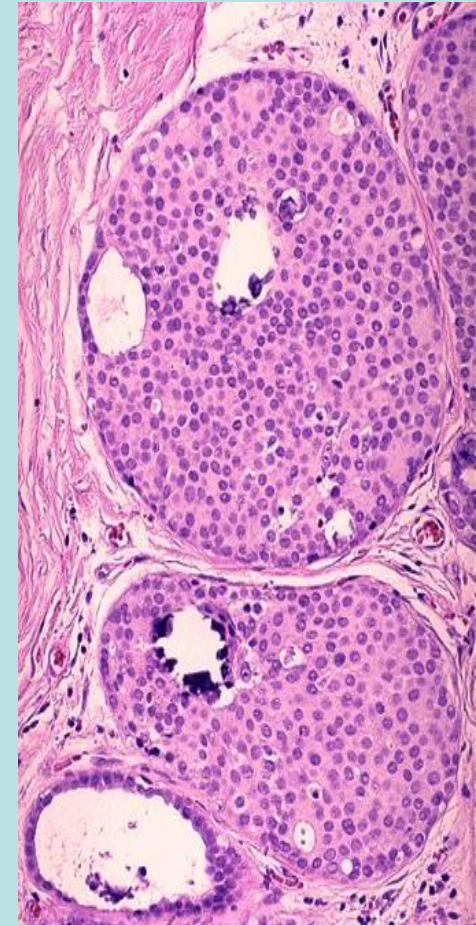
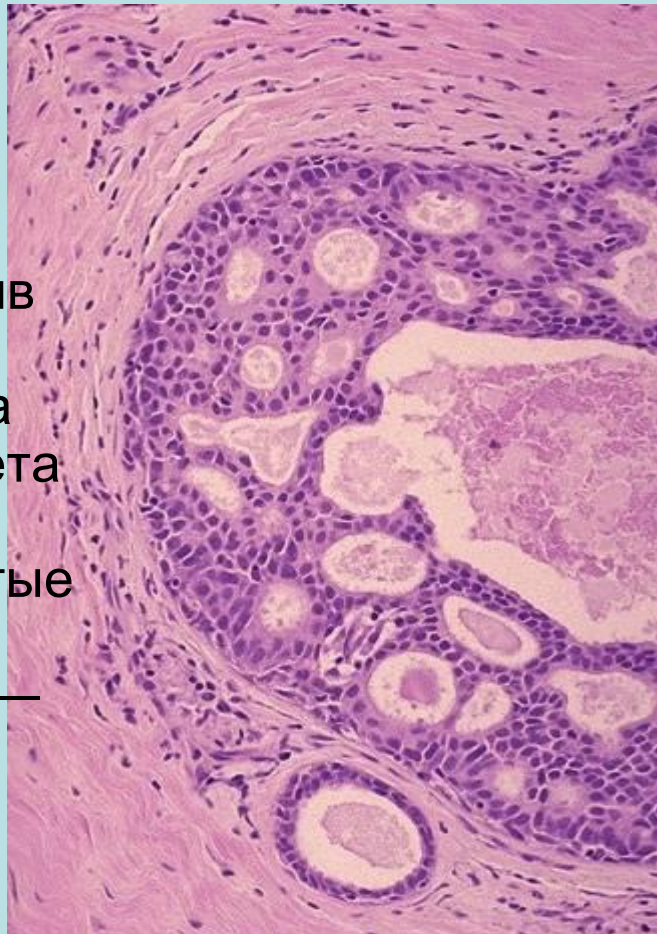
- **Макроскопически** различают 3 формы рака молочной железы: 1) узловой; 2) диффузный; 3) рак соска и соскового поля (болезнь Педжета).
- Узловой рак встречается наиболее часто, характеризуется наличием плотных, желтовато-серых, или мягких, напоминающих кисту узлов с бугристыми стенками и большим количеством некротизированных тканей бурого цвета.
- Диффузный рак имеет вид желтовато-серых тяжей, пронизывающих молочную железу. Может сопровождаться выраженным отеком и гиперемией. В некоторых случаях молочная железа уменьшается, становится плотной и бугристой, как бы покрытой панцирем (панцирная форма).

- По **гистологическому строению** выделяют: 1) неинфильтрирующий рак, 2) инфильтрирующий рак, 3) болезнь Педжета.
- Неинфильтрирующий рак может быть внутри-дольковым и внутрипротоковым. Отсутствие инвазивного роста позволяет клиницистам отнести этот рак к ранним. Чаще всего данную форму рака выявляют при гистологическом исследовании ткани молочной железы, удаленной по поводу доброкачественных заболеваний.
- Внутридольковый рак может быть солидным или железистым.

Внутрипротоковый рак

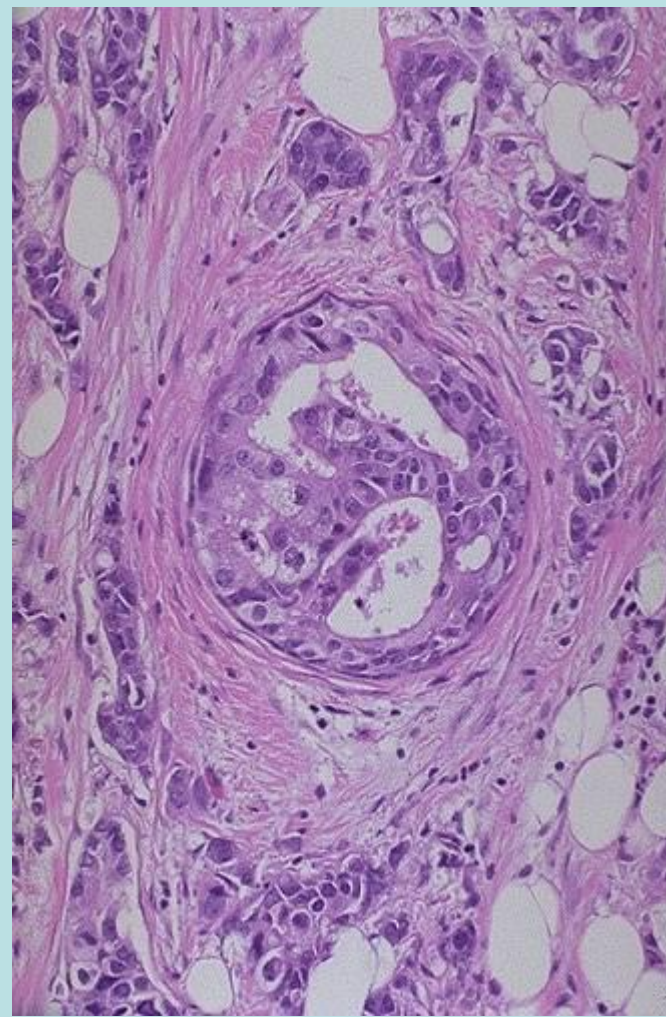
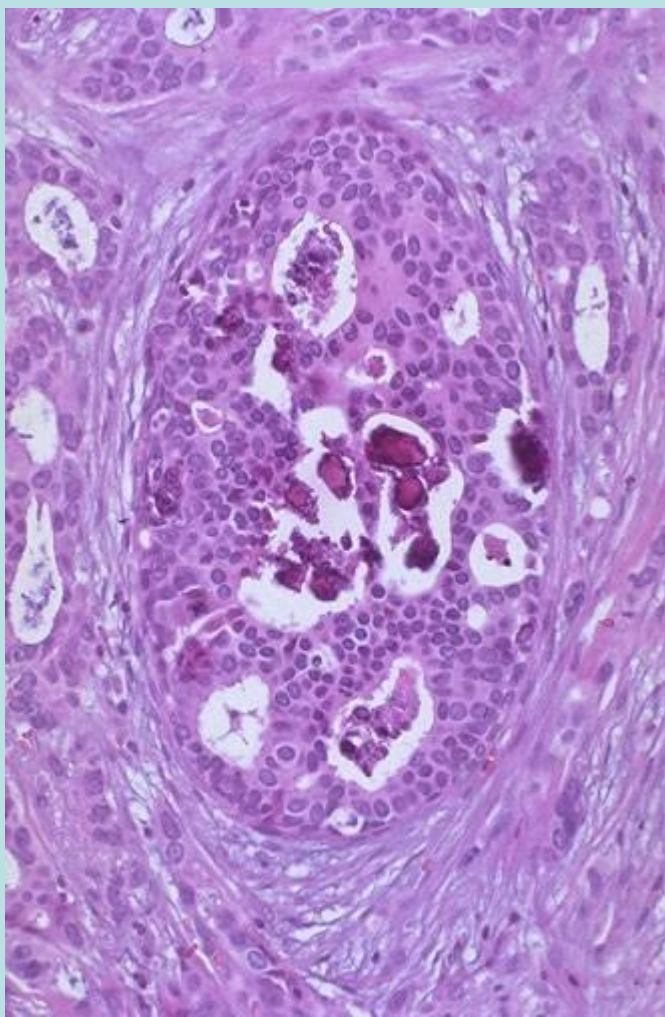
Неинфильтрирующий рак

- Внутрипротоковый рак характеризуется разрастанием эпителия в просвете расширенных протоков в виде сосочков (сосочковый рак). Иногда опухолевая ткань, заполнив просвет протока, подвергается некрозу, и на разрезе опухоли из просвета расширенных протоков выдавливаются белесоватые крошащиеся пробки некротизированной ткани — угревидный рак.



Протоковый рак

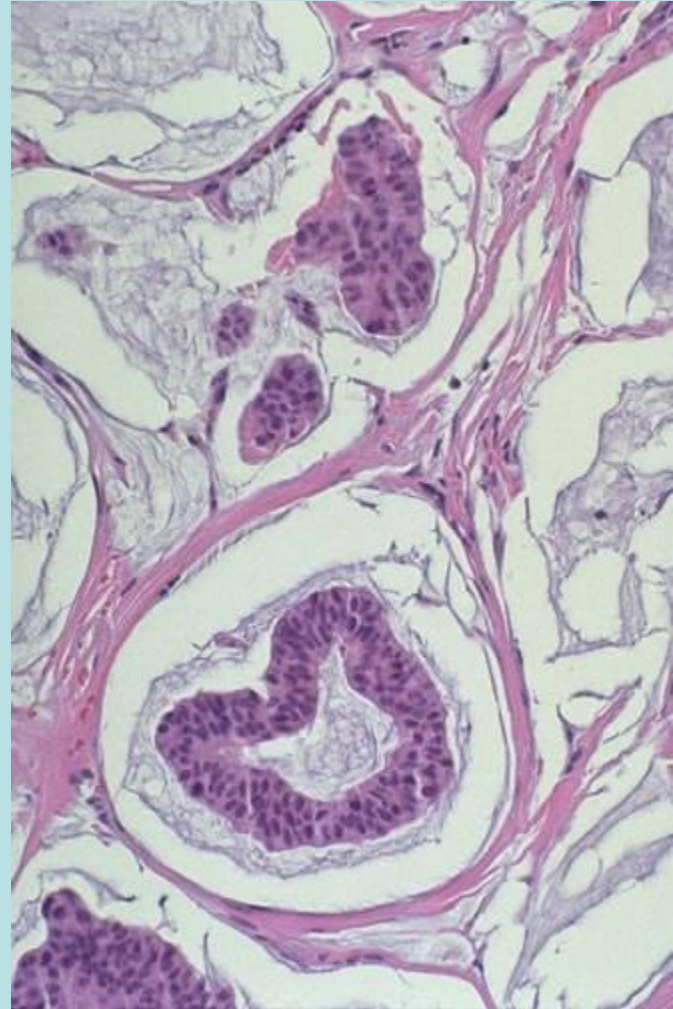
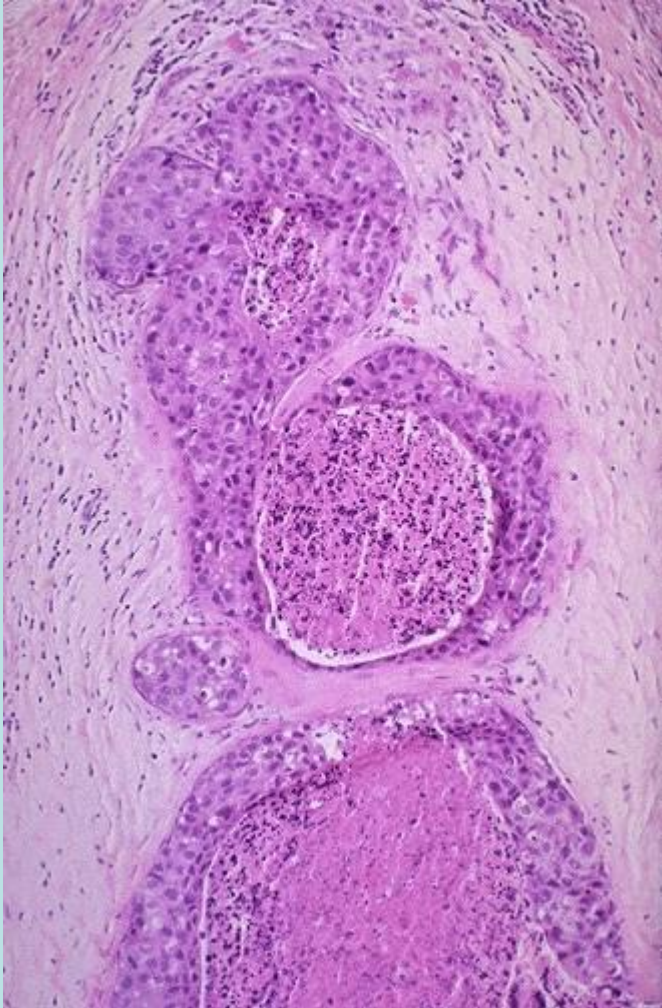
Инфильтрирующий рак



- Инфильтрирующий рак развивается с началом инвазии внутрипротокового и внутридолькового рака. Гистологическая классификация ВОЗ выделяет более 10 вариантов инфильтрирующего рака молочной железы, основными среди которых являются инфильтрирующий протоковый и инфильтрирующий дольковый рак. Относительно часто встречаются слизистый, медуллярный, тубулярный рак.

Инфильтрирующий рак

(комедокарцинома и муцинозная карцинома)

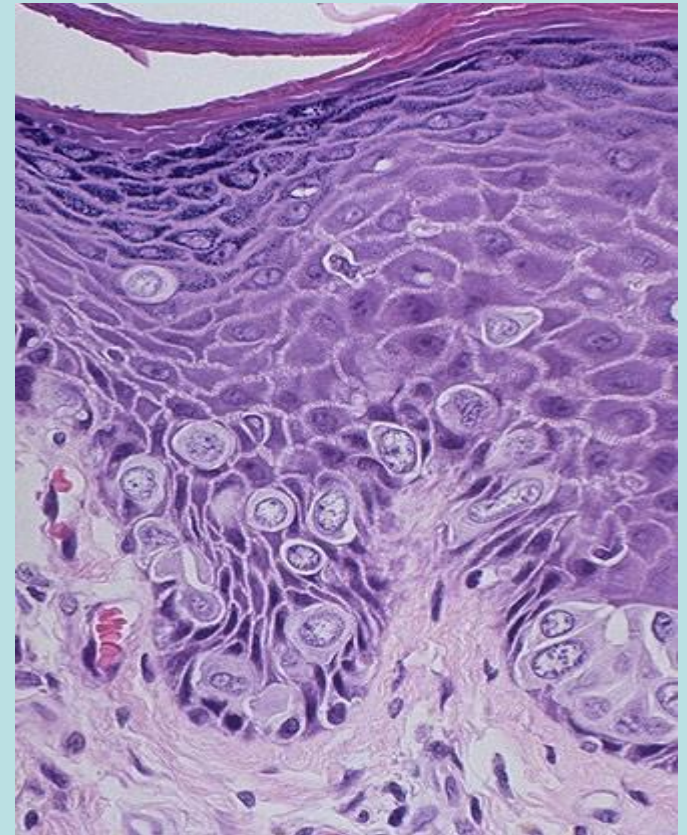
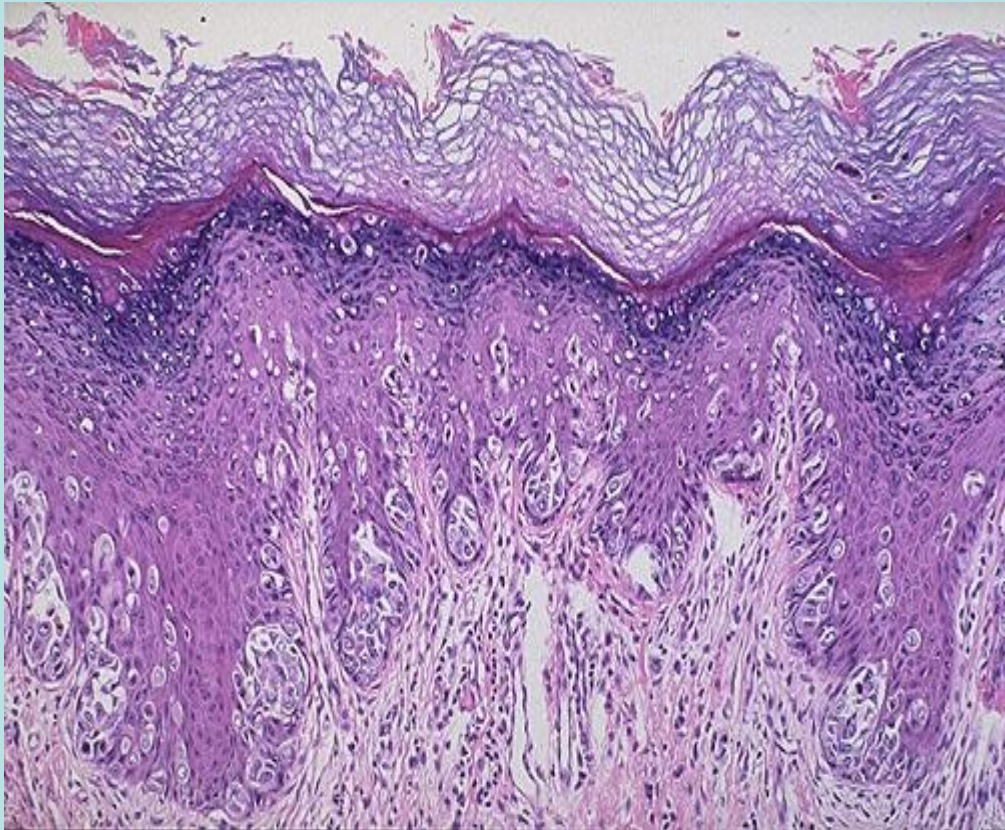


- Болезнь Педжета — особая гистологическая разновидность рака, при которой в эпидермисе соска и выводных протоках «молочной железы обнаруживаются крупные клетки с бледноокрашенной цитоплазмой. Болезнь Педжета обычно сочетается с протоковым раком, редко — с дольковым.
- Рак молочной железы, как правило, характеризуется бурным течением, анамнез

заболевания обычно не превышает полугод. Иногда распространенные метастазы развиваются при раке диаметром менее 1 см.



Болезнь Педжета



- Первые метастазы рака молочной железы лимфогенные. Основной путь лимфооттока — в подмышечные лимфатические узлы, затем поражаются подключичные, надключичные, реже — шейные узлы. Часто поражаются подлопаточные лимфатические узлы. Из внутренних квадрантов молочной железы часть лимфы поступает в средостение в окологрудные узлы.
- Гематогенные метастазы в легкие наблюдаются у 60—70 % больных. В 30—40 % поражаются печень и кости.

- **Лечение.** При раке молочной железы проводят комбинированное лечение, хирургический метод сочетается с химио-, лучевой и гормональной терапией. Пути лимфогенного метастазирования определяют широкий объем радикальной операции — удаление молочной железы вместе с большой и малой грудными мышцами, подмышечной, подлопаточной и подключичной клетчаткой. При ранних формах рака применяют более щадящие операции.

- **Прогноз.** Зависит от стадии рака, его гистологического варианта и степени дифференцировки опухоли, поэтому результаты морфологического исследования во многом определяют тактику лечения больных. Важным прогностическим признаком является наличие в ткани опухоли рецепторов к эстрогенам. Опухоли, содержащие такие рецепторы, менее агрессивны и хорошо поддаются гормональному лечению.

- При раннем раке 5-летняя выживаемость составляет 90—98 %. При наличии метастазов прогноз резко ухудшается (5-летняя выживаемость от 22 до 63 %).
- Для рака молочной железы очень характерны поздние рецидивы и метастазы. Иногда отдаленные метастазы проявляются через много лет после радикального удаления опухоли. Пациентов нельзя считать выздоровевшими в течение 15—20 лет.