

Micropreparate:

Nº OP2. Chist radicular (periapical). (*Colorație H-E.*)

Indicații:

1. Suprafața luminală a chistului tapetat cu epiteliu scuamos stratificat.
2. Peretele chistului cu infiltrat inflamator cronic.
3. Cristale de colesterol în peretele chistului.

Nº OP4. Cheratochist odontogenic. (*Colorație H-E.*)

Indicații:

1. Suprafața luminală a chistului tapetată cu epiteliu scuamos cheratinizat.
2. Detrit cornos în lumenul chistului.

Nº 195. Ameloblastom. (*Colorație H-E.*)

Indicații:

1. Epiteliu odontogen (cordoane de celule epiteliale).
2. Țesut fibro-conjunctiv.

Nº OP7. Fibrom cemento-osificant. (*Colorație H-E.*)

Indicații:

1. Stroma hiper celulară constituită din fibroblaști.
2. Structuri osoase.

Болезни челюстей.

Микропрепараты:

№ ОР2. Корневая (периапикальная) киста. (Окраска Г-Э.)

Обозначения:

1. Внутренняя поверхность кисты, покрытая плоскоклеточным эпителием.
2. Стенка кисты с хроническим воспалительным инфильтратом.
3. Кристаллы холестерина в стенке кисты.

№ ОР4. Одонтогенная кератокиста. (Окраска Г-Э.)

Обозначения:

1. Внутренняя поверхность кисты, покрытая ороговевающим плоскоклеточным эпителием.
2. Кератиновый детрит в просвете кисты.

№ 195. Амелобластома. (Окраска Г-Э.)

Обозначения:

1. Одонтогенный эпителий (пучки эпителиальных клеток).
2. Фиброзно-соединительная ткань.

№ ОР7. Цементно-оссифицирующая фиброма. (Окраска Г-Э.)

Обозначения:

1. Гиперклеточная строма состоящая из фибробластов.
2. Костные структуры.

Pathology of jaws.

Microspecimens:

Nº OP2. Radicular (periapical) cyst. (H-E. stain)

Indications:

1. Luminal surface of the cyst lined by stratified squamous epithelium.
2. Cyst wall with chronic inflammatory infiltration.
3. Cholesterol crystals in the cyst wall.

Nº. OP4. Odontogenic keratocyst. (H-E. stain)

Indications:

1. Luminal surface of the cyst with keratinized squamous epithelium.
2. Keratinous debris in the cyst lumen.

Nº 195. Ameloblastoma. (H-E. stain)

Indications:

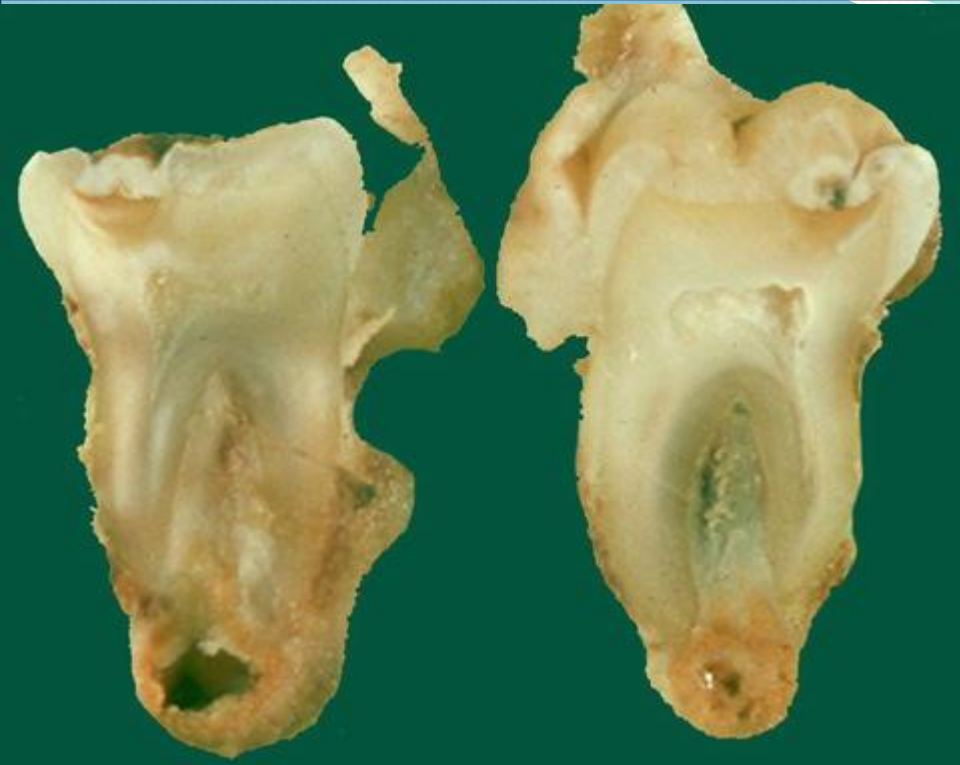
1. Odontogenic epithelium (trabeculae of epithelial cells).
2. Fibrous connective tissue.

Nº OP7. Cemento-ossifying fibroma. (H-E. stain)

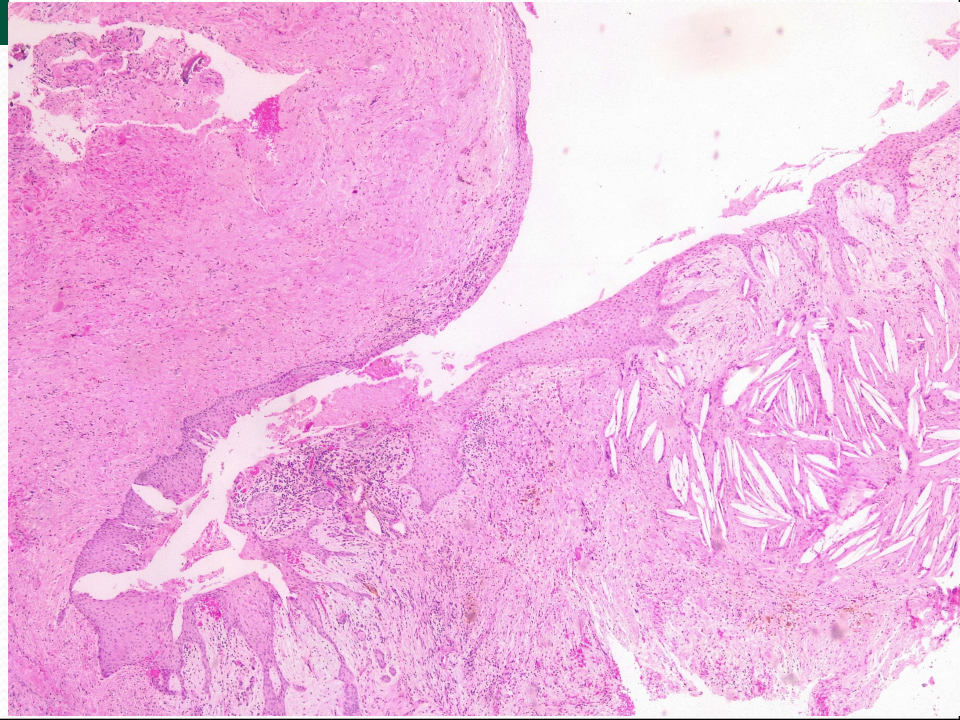
Indications:

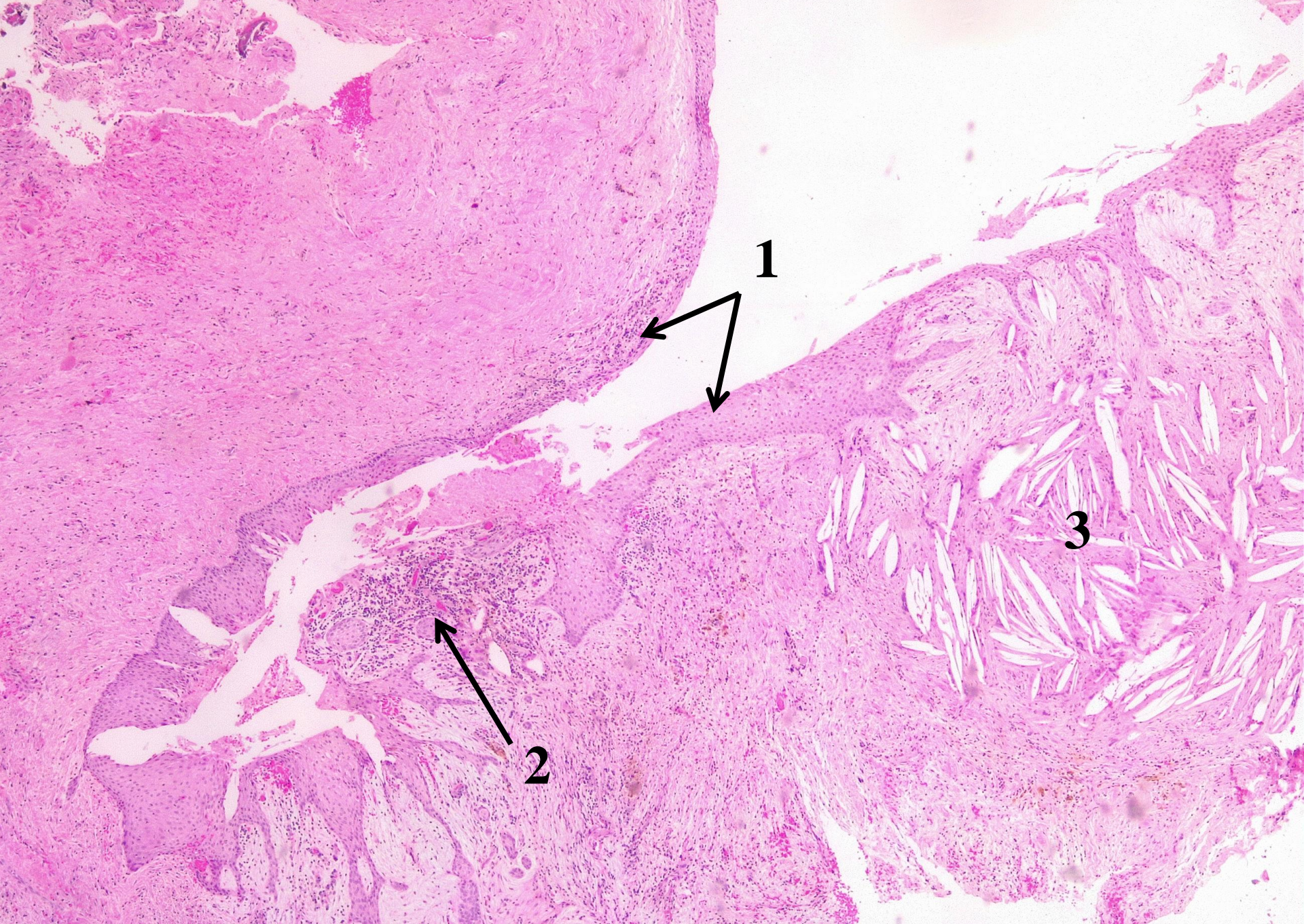
1. Hypercellular stroma consisting of fibroblasts.
2. Bone structures.

Chisturile odontogene



Chist radicular (periapical).





No OP2. Chist radicular (periapical). (Colorație H-E.)

Chisturile odontogene



Chist folicular (dentiger, chistul dintelui neerupt).

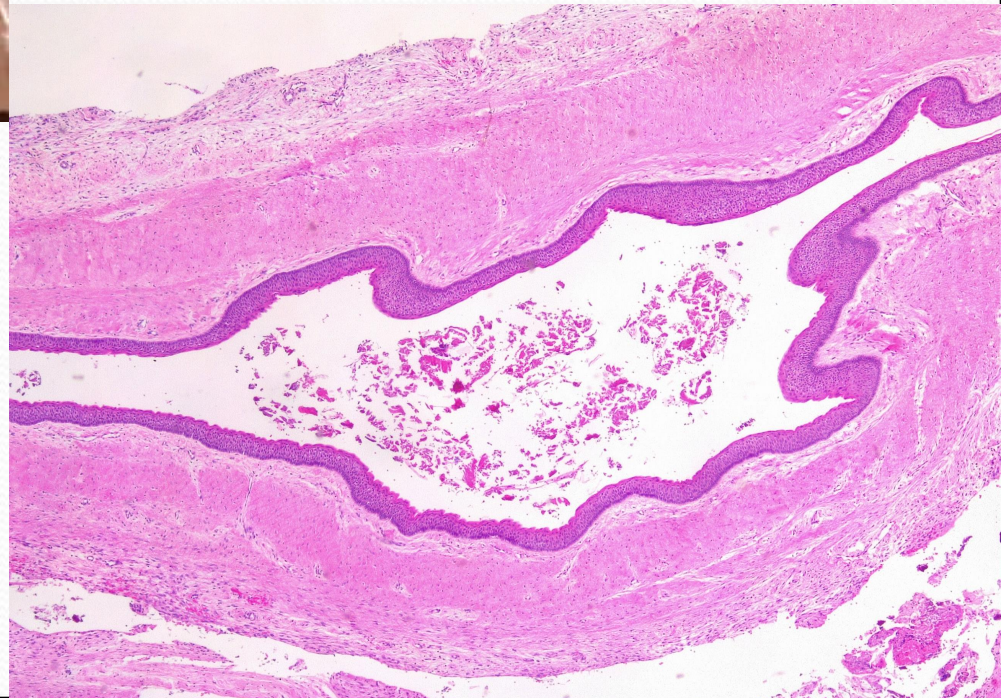


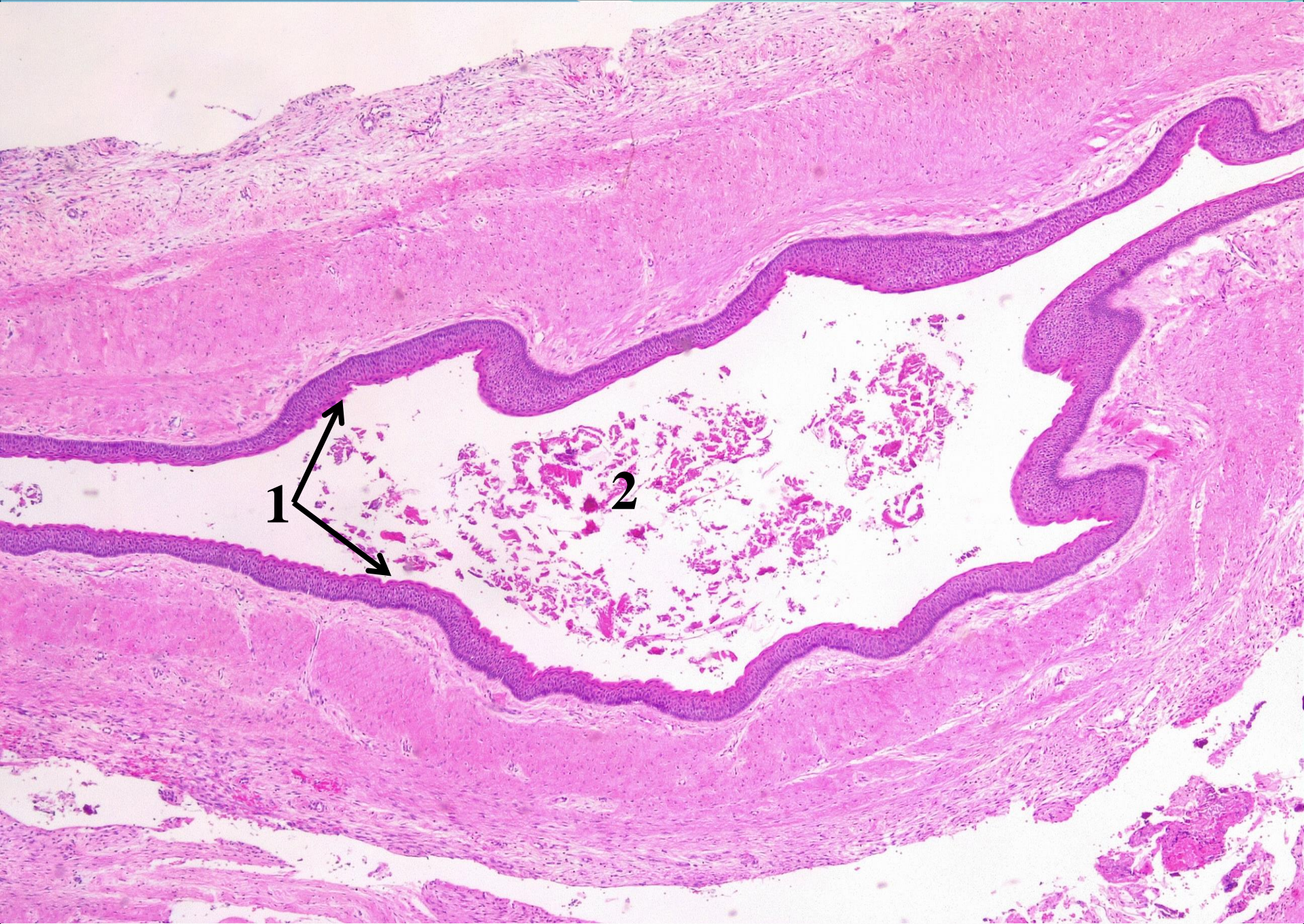
Chisturile odontogene



Epiteliu pluristratificat cu keratinizare.

**Keratochistom (chist primordial)
al maxilarului superior.**



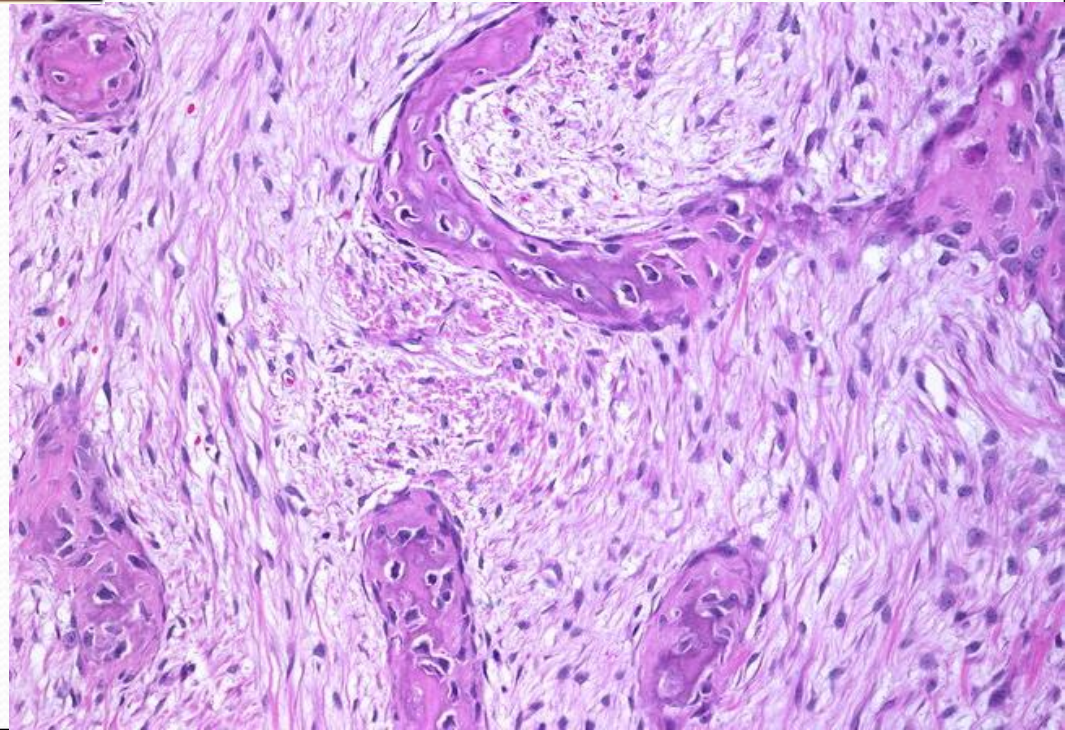


No OP4. Cheratochist odontogenic. (Colorație H-E.)

Afecțiuni pseudotumorale.



**Displazie fibroasă a
maxilarului superior.**

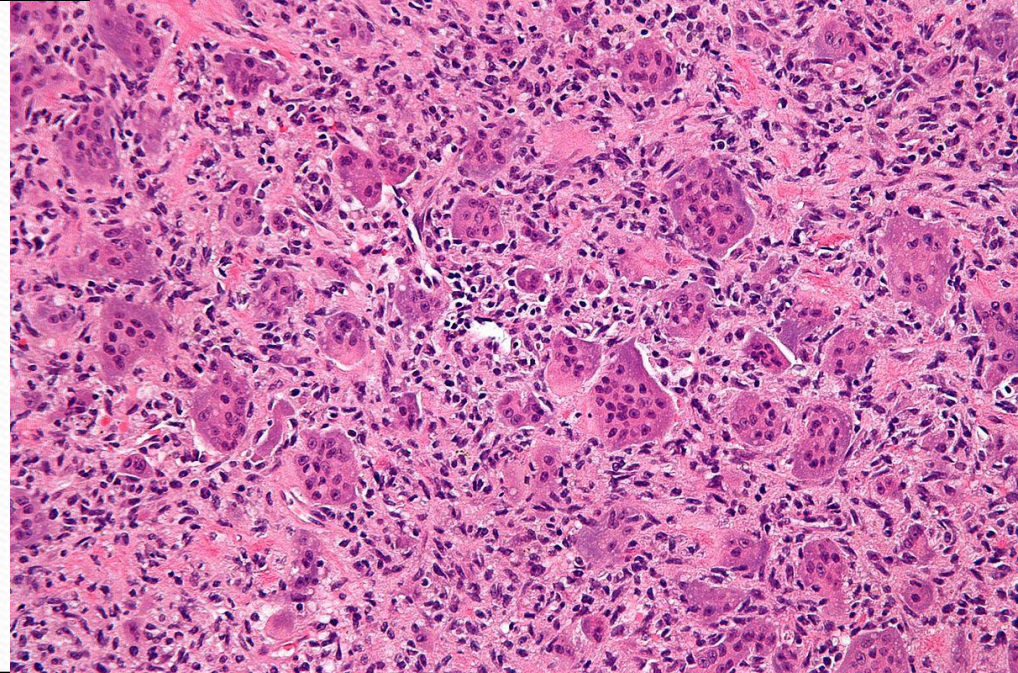
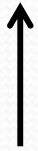


Tumorile neodontogene

**Tumoare gigantocelulară
(osteoblastoclastom).**

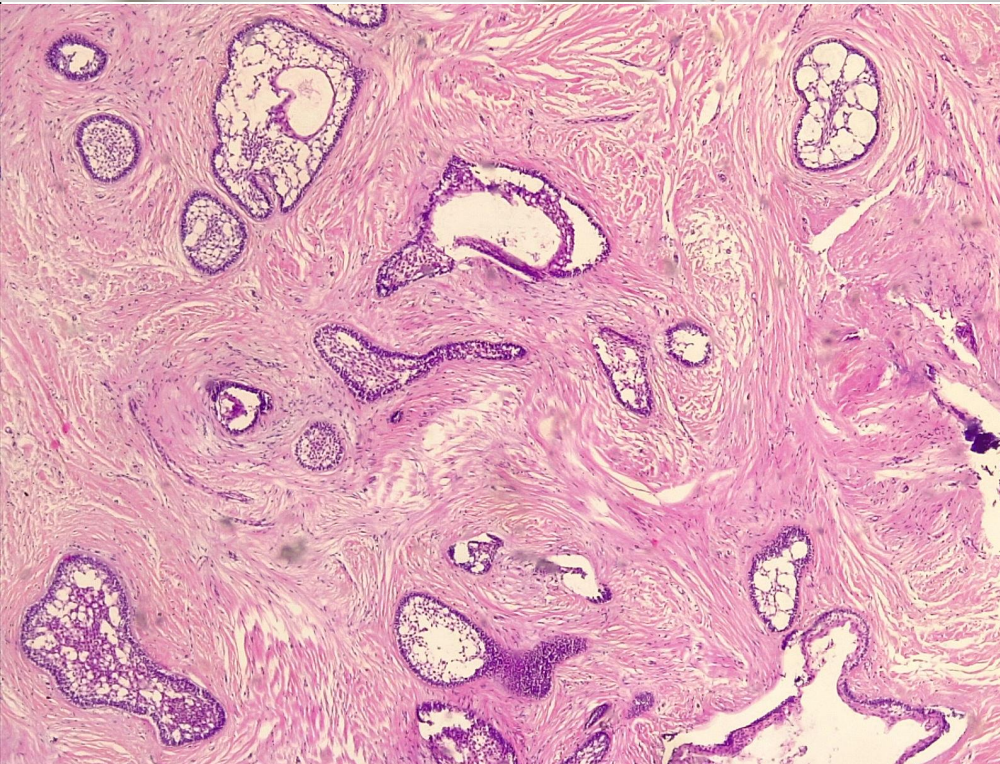
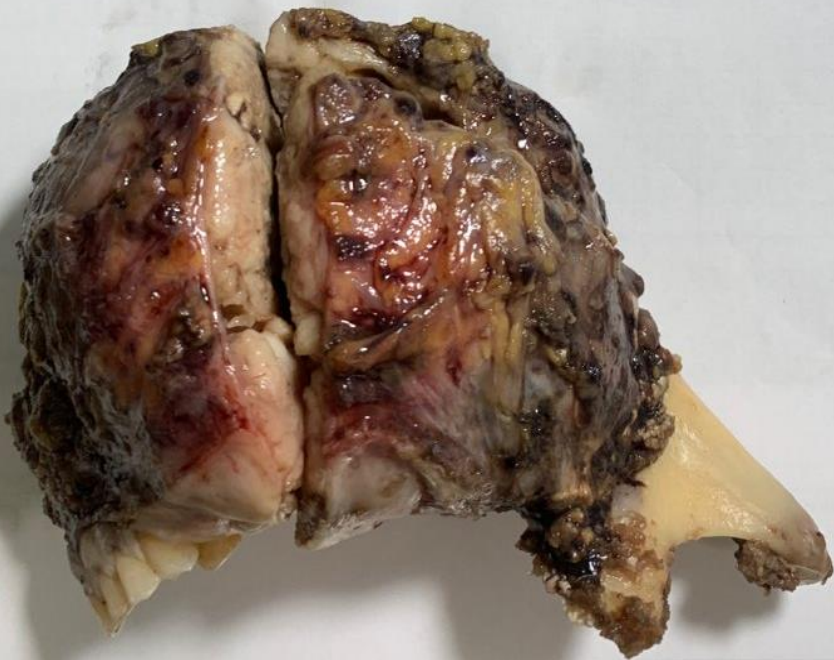


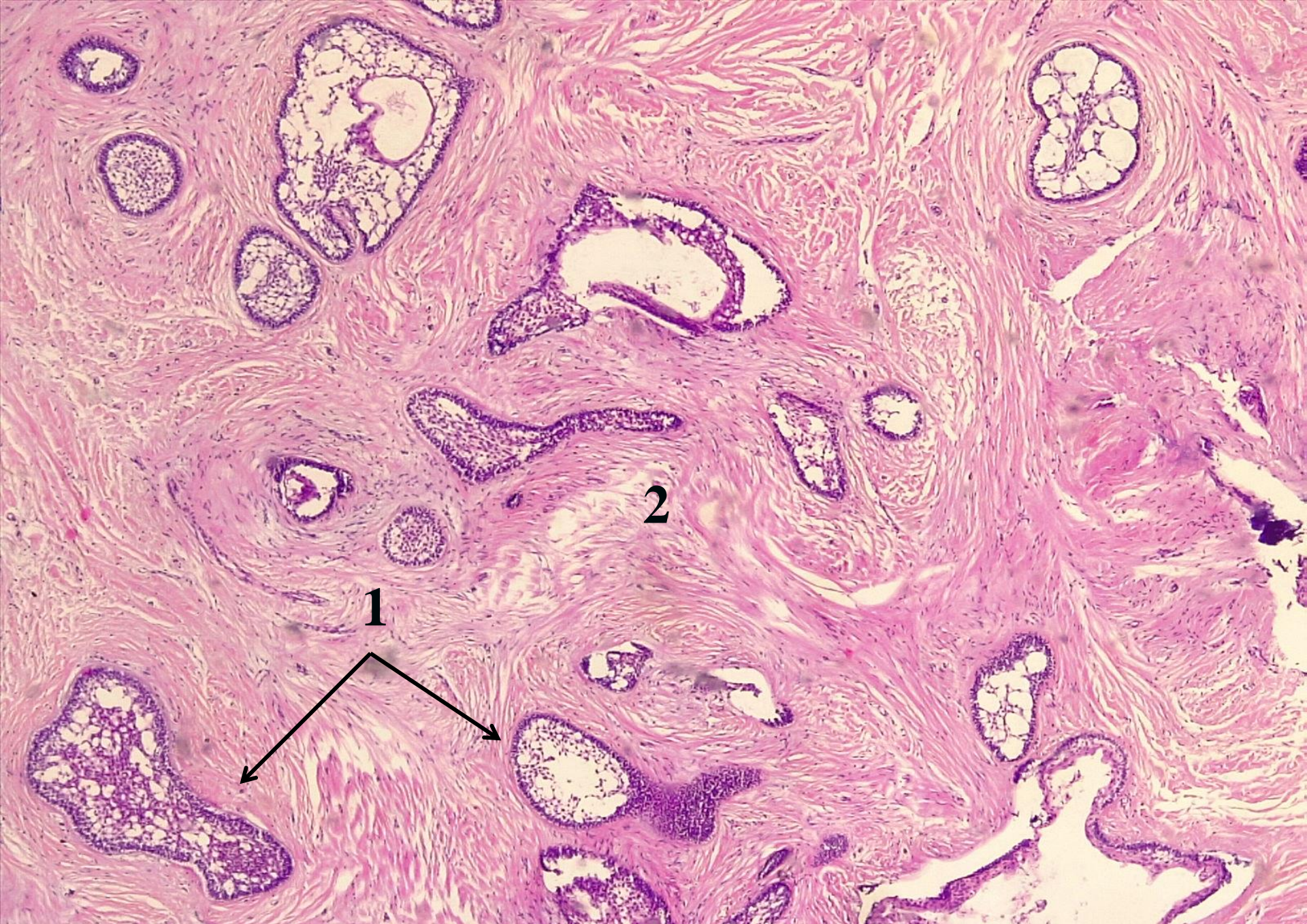
Osteom.



Tumorile odontogene (legate histogenetic de epiteliul odontogen).

Ameloblastom folicular.

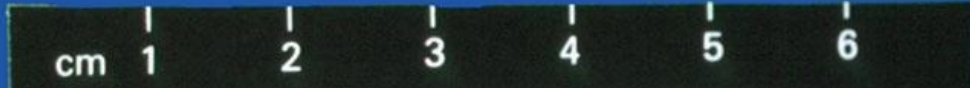




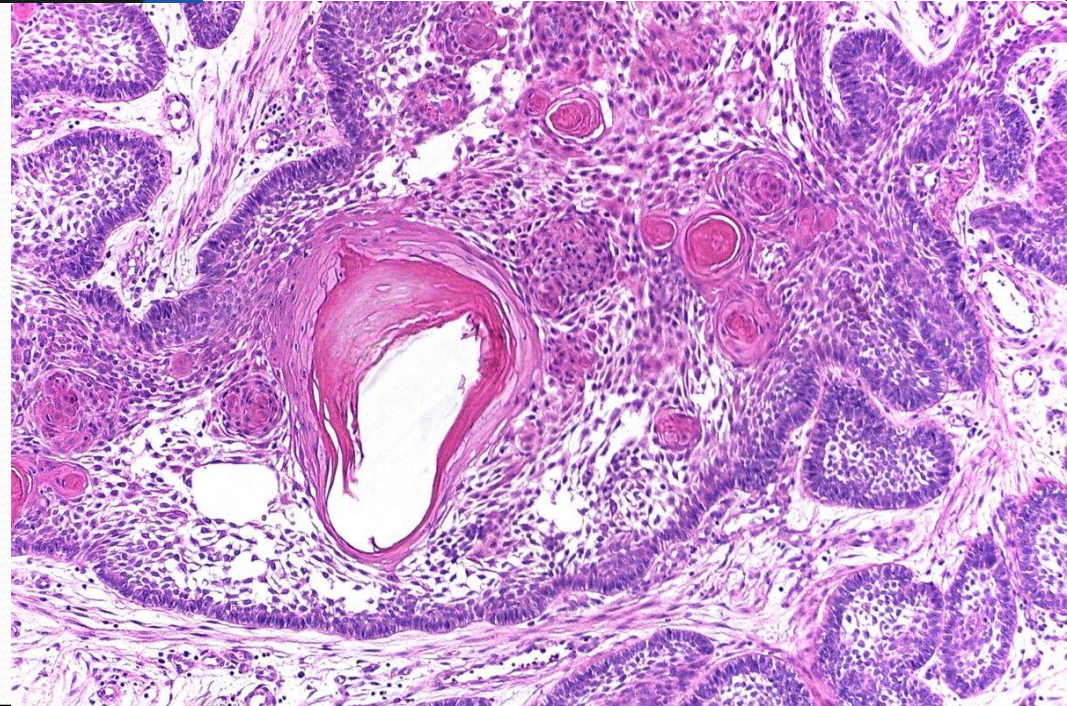
№ 195. Ameloblastom. (Colorație H-E.)

Tumorile odontogene

(legate histogenetic de epiteliul odontogen).



Ameloblastom acantomatos.



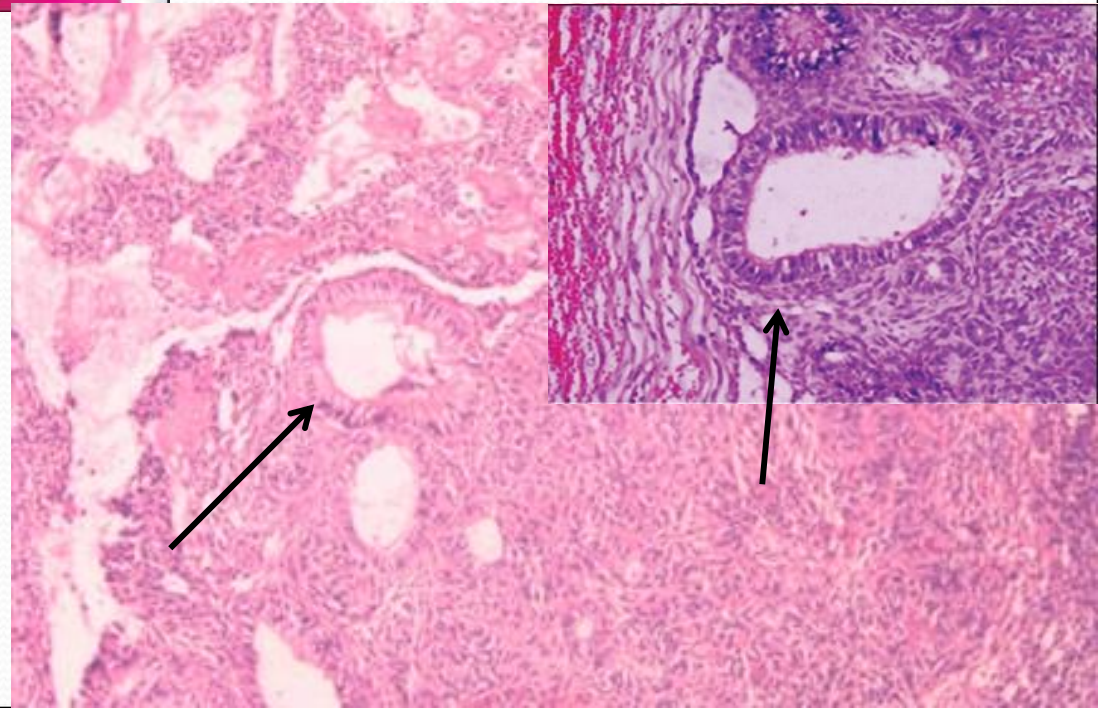
Tumorile odontogene

(legate histogenetic de epiteliul odontogen).



Structuri asemănătoare unor ducturi.

Tumoare adenomatoidă.

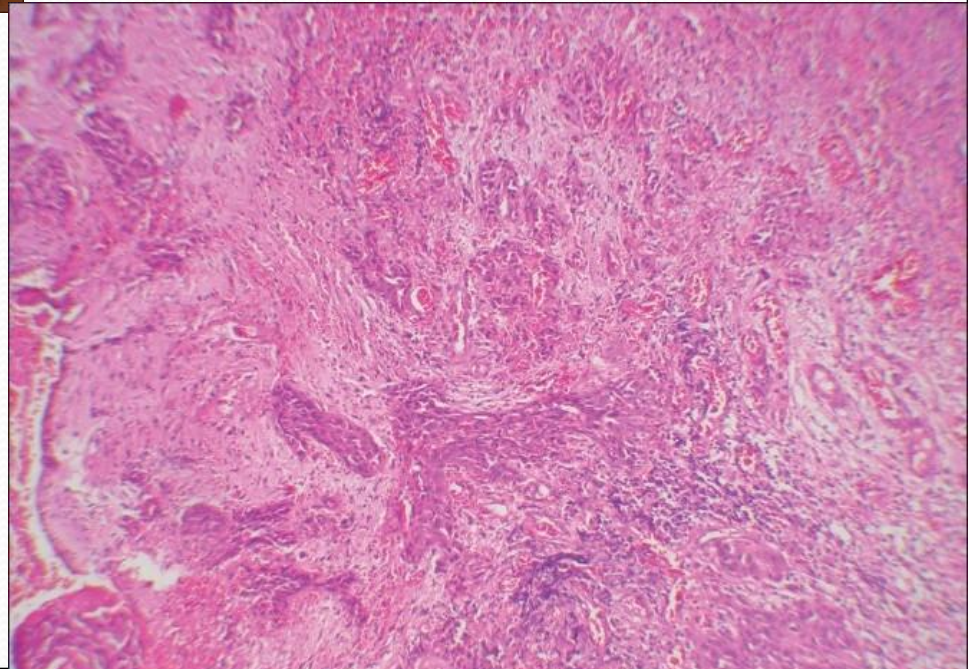




Tumorile odontogene (legate histogenetic de epiteliul odontogen).

Structura carcinomului epidermoid
(apare din insulele Malasez).

Carcinom primar intraosos.



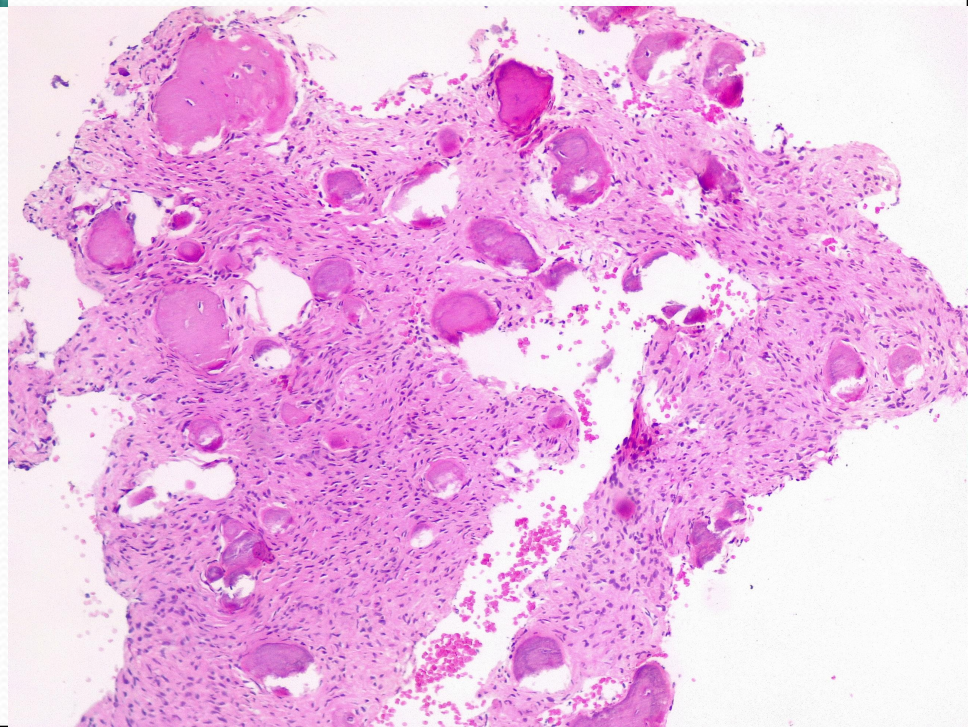


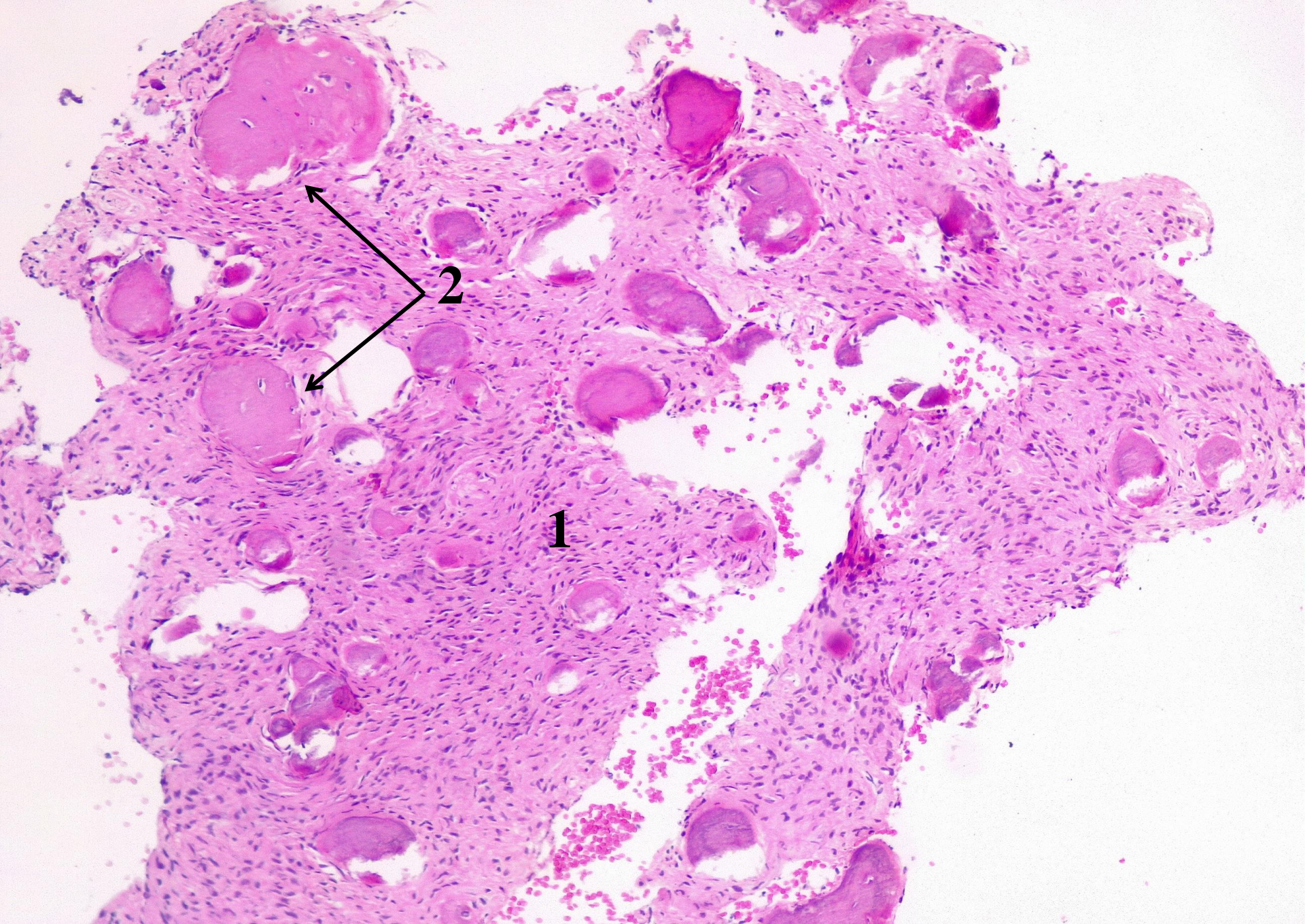
Tumorile odontogene

(legate histogenetic de mezenchimul odontogen).

Structuri osoase care conțin osteoblaști.

Fibrom cemento-osificant
(variantă de cementom).





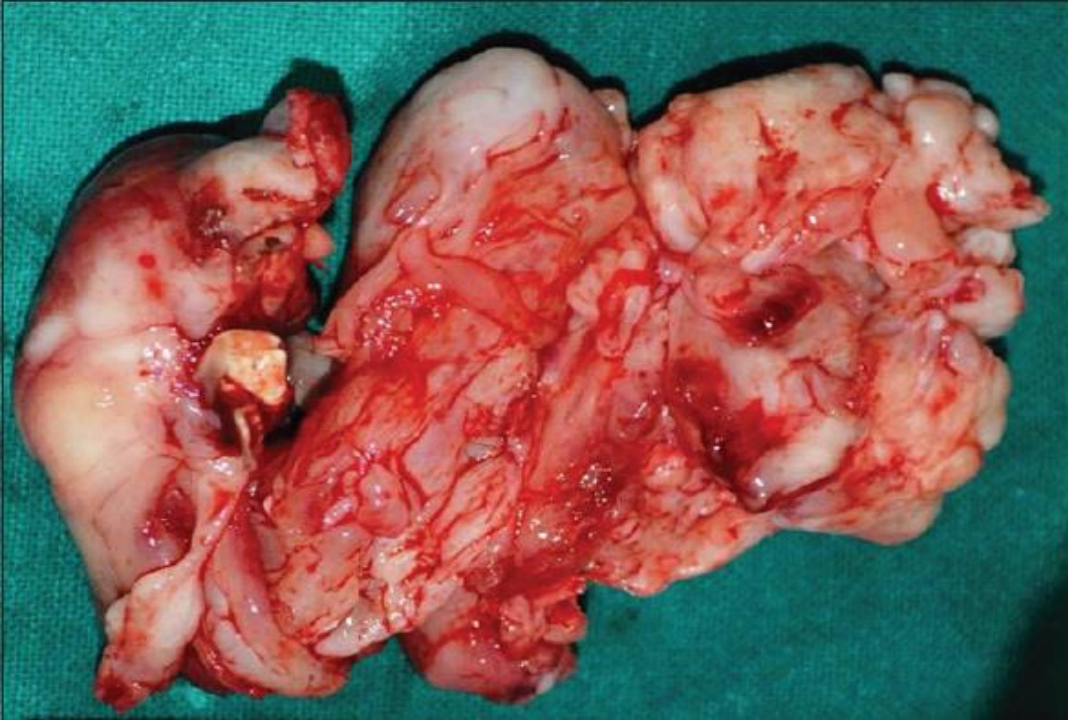
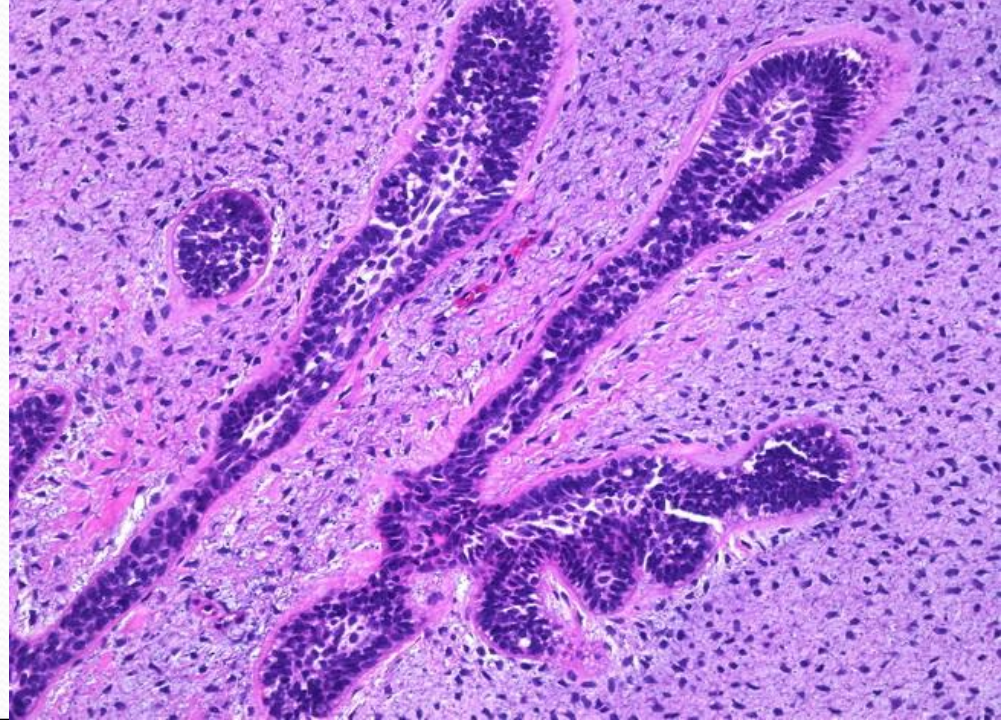
No OP7. Fibrom cemento-osificant. (Colorație H-E.)

Tumorile odontogene

(de geneză mixtă).

Epiteliu odontogen proliferant și țesut conjunctiv lax asemănător cu țesutul papilei dentare.

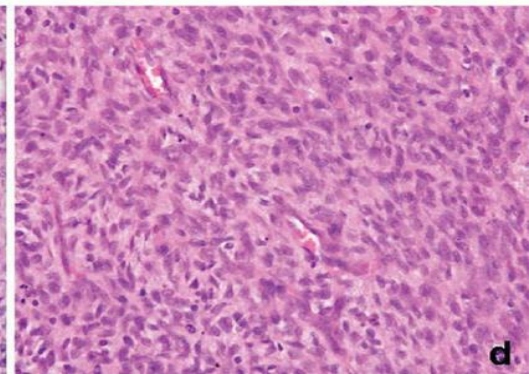
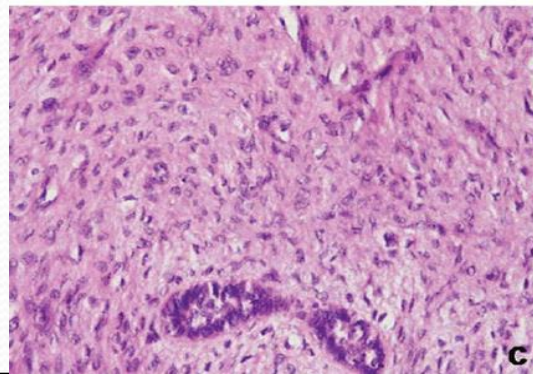
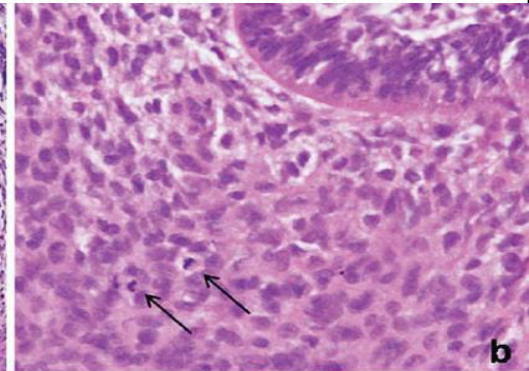
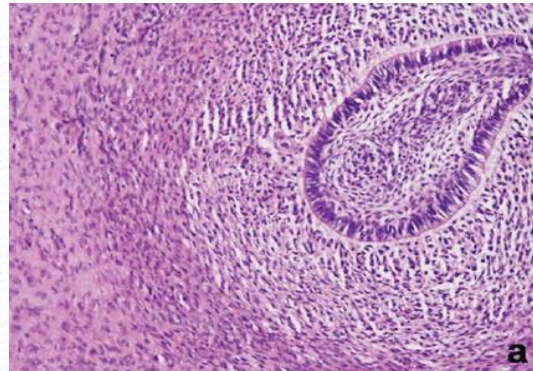
Fibrom ameloblastic.



Tumorile odontogene (de geneză mixtă).

Componentul epitelial este histologic benign, componentul mezenchimal stromal este hipercelular cu celule ovale și fusiforme maligne.

Fibrosarcom ameloblastic.



Tumorile odontogene

(de geneză mixtă).



1. Mezinchimul odontogen

2. Epiteliu odontogen

3. Țesut dur dentar în epiteliu odontogen
(dentina și smalț)

Fibro-odontom ameloblastic.

